

NO. OF COPIES RECEIVED	5
DISTRIBUTION	
SANTA FE	1
FILE	1 ✓
U.S.G.S.	2
LAND OFFICE	
OPERATOR	1

NEW MEXICO OIL CONSERVATION COMMISSION

RECEIVED

APR 24 1974

30-015-21194

Form C-101
Revised 1-4-65

5A. Indicate Type of Lease
STATE <input type="checkbox"/> FEE <input checked="" type="checkbox"/>
5. State Oil & Gas Lease No.

APPLICATION FOR PERMIT TO DRILL, DEEPEN, OR PLUG BACK

1a. Type of Work		7. Unit Agreement Name	
b. Type of Well OIL WELL <input type="checkbox"/> GAS WELL <input checked="" type="checkbox"/> OTHER <input type="checkbox"/>		8. Farm or Lease Name	
DRILL <input checked="" type="checkbox"/> DEEPEN <input type="checkbox"/> PLUG BACK <input type="checkbox"/>		Achen-Frey "DK"	
2. Name of Operator Yates Petroleum Corporation		9. Well No. 1	
3. Address of Operator 207 South 4th Street - Artesia, NM 88210		10. Field and Pool, or Wildcat Undesignated	
4. Location of Well UNIT LETTER N LOCATED 660 FEET FROM THE South LINE AND 1980 FEET FROM THE West LINE OF SEC. 13 TWP. 17S RGE. 25E NMPM		12. County Eddy	
21. Elevations (Show whether DI, RT, etc.) 3452' GR		21A. Kind & Status Plug. Bond Blanket	21B. Drilling Contractor Ard Drilling Co. #4
19. Proposed Depth approx 8400'		19A. Formation Morrow	20. Rotary or C.T. Rotary
22. Approx. Date Work will start 4-30-74			

23.

PROPOSED CASING AND CEMENT PROGRAM

SIZE OF HOLE	SIZE OF CASING	WEIGHT PER FOOT	SETTING DEPTH	SACKS OF CEMENT	EST. TOP
17"	13-3/8"	48#	Approx 320'	200 sx	circulate
12 1/4"	8-5/8"	24#	" 1200'	450 sx	circulate
7-7/8"	5 1/2" or 4 1/2"	17, 15.5# or 11.6 or 9.5#	" 8400'	200 sx	

Propose to drill and test the Morrow and intermediate formations. Approx. 320 ft of surface casing will be set to shut off surface gravel and caving. Intermediate casing will be set 100 ft below the Artesian Zone and cemented to the surface. If commercial pay is encountered 5 1/2" or 4 1/2" casing will be run and cemented. Will perforate and stimulate as needed.

APPROVAL VALID
FOR 90 DAYS UNLESS
DRILLING COMMENCED,

EXPIRES 7-29-74

IN ABOVE SPACE DESCRIBE PROPOSED PROGRAM: IF PROPOSAL IS TO DEEPEN OR PLUG BACK, GIVE DATA ON PRESENT PRODUCTIVE ZONE AND PROPOSED NEW PRODUCTIVE ZONE. GIVE BLOWOUT PREVENTER PROGRAM, IF ANY.

I hereby certify that the information above is true and complete to the best of my knowledge and belief.

Signed Eddie L. Qualiford Title Engineer Date 4-23-74

(This space for State Use)

APPROVED BY W. A. Gressett TITLE OIL AND GAS INSPECTOR DATE APR 29 1974

CONDITIONS OF APPROVAL, IF ANY:

Adequate Blowout Preventer
be used.

Cement must be circulated to
surface behind 13 3/8" & 8 5/8" casing

Notify N.M.O.C.C. in sufficient
time to witness cementing
the 8 5/8" casing

NEW MEXICO OIL CONSERVATION COMMISSION
WELL LOCATION AND ACREAGE DEDICATION PLAT

Form C-102
Supersedes C-128
Effective 1-1-65

All distances must be from the outer boundaries of the Section.

Operator Yates Petroleum Corporation			Lease Achen-Frey DK		Well No. 1
Unit Letter N	Section 13	Township 17S	Range 25E	County Eddy	
Actual Footage Location of Well: 660 feet from the South line and 1980 feet from the West line					
Ground Level Elev. 3452	Producing Formation Morrow		Pool Undesignated		Dedicated Acreage: 320 Acres

1. Outline the acreage dedicated to the subject well by colored pencil or hachure marks on the plat below.
2. If more than one lease is dedicated to the well, outline each and identify the ownership thereof (both as to working interest and royalty).
3. If more than one lease of different ownership is dedicated to the well, have the interests of all owners been consolidated by communitization, unitization, force-pooling, etc?

RECEIVED

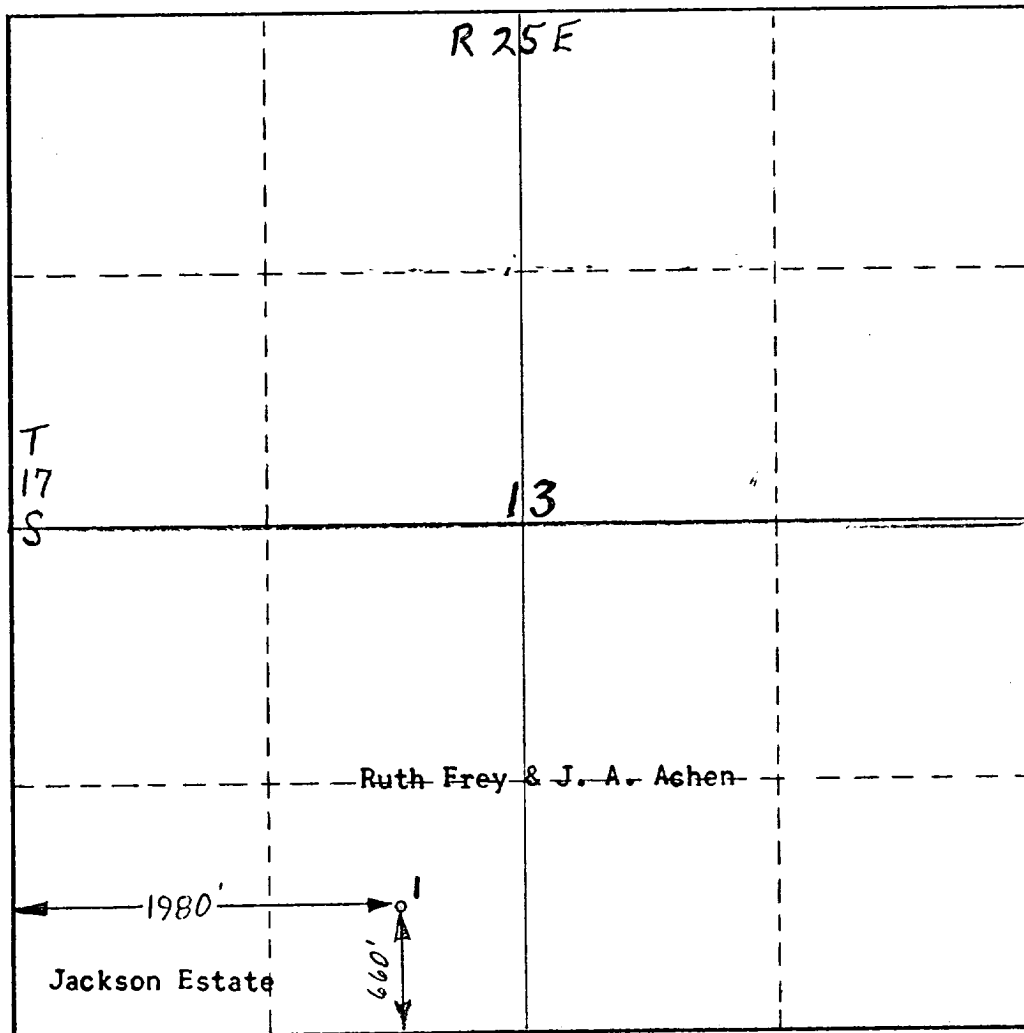
APR 29 1974

☒ Yes ☐ No If answer is "yes," type of consolidation Communitization O.C.C.

ARTESIA, OFFICE

If answer is "no," list the owners and tract descriptions which have actually been consolidated. (Use reverse side of this form if necessary.)

No allowable will be assigned to the well until all interests have been consolidated (by communitization, unitization, forced-pooling, or otherwise) or until a non-standard unit, eliminating such interests, has been approved by the Commission.



CERTIFICATION

I hereby certify that the information contained herein is true and complete to the best of my knowledge and belief.

Eddie M. Mahfood

Name
Eddie M. Mahfood

Position
Engineer

Company
Yates Petroleum Corp.

Date
4/22/74

I hereby certify that the well location shown on this plat was plotted from field notes of actual surveys made by me or under my supervision, and that the same is true and correct to the best of my knowledge and belief.

Date Surveyed
April 22nd 1974

Registered Professional Engineer and/or Land Surveyor

James H. Brown
Certificate No. **542**

