

NO. OF COPIES RECEIVED	5
DISTRIBUTION	
SANTA FE	1
FILE	1
U.S.G.S.	1
LAND OFFICE	
OPERATOR	1

NEW MEXICO OIL CONSERVATION COMMISSION

RECEIVED

APR 24 1974

30-015-21189
Form C-101
Revised 1-1-65

5A. Indicate Type of Lease	
STATE <input type="checkbox"/>	FEE <input checked="" type="checkbox"/>
5. State Oil & Gas Lease No.	
7. Unit Agreement Name	
8. Farm or Lease Name	
Frey	
9. Well No.	
2	
10. Field and Pool, or Wildcat	
Eagle Creek (S.A.)	
12. County	
Eddy	
13. Proposed Depth	19A. Formation
1500	San Andres
20. Rotary or C.T.	
Rotary	
21. Elevations (Show whether DF, RT, etc.)	22. Approx. Date Work will start
3465 GR.	4-27-74

APPLICATION FOR PERMIT TO DRILL, DEEPEN, OR ~~PLUG BACK~~ **ARTESIA, OFFICE**

1a. Type of Work

b. Type of Well DRILL ☒ DEEPEN ☐ PLUG BACK ☐

OIL WELL ☒ GAS WELL ☐ OTHER ☐ SINGLE ZONE ☒ MULTIPLE ZONE ☐

2. Name of Operator
Yates Petroleum Corporation

3. Address of Operator
207 South 4th Street, Artesia, New Mexico 88210

4. Location of Well UNIT LETTER L LOCATED 330 FEET FROM THE West LINE

AND 2310 FEET FROM THE South LINE OF SEC. 13 TWP. 17S RGE. 25E NMPM

21. Elevations (Show whether DF, RT, etc.)
3465 GR.

21A. Kind & Status Plug. Bond
Blanket

21B. Drilling Contractor
Cactus Drilling Co.

22. Approx. Date Work will start
4-27-74

23.

PROPOSED CASING AND CEMENT PROGRAM

SIZE OF HOLE	SIZE OF CASING	WEIGHT PER FOOT	SETTING DEPTH	SACKS OF CEMENT	EST. TOP
14 1/2"	10 3/4"	30#	Approx. 300	200	Circulate
9 1/2"	7"	23#	Approx. 1200	400	Circulate
6 1/4"	5 1/2" - 4 1/2"	15.5# - 9.5#	Approx. 1500	125	Circulate

Propose to drill San Andres test with about 300' Surface Casing to shut off gravel and caving. Intermediate casing set 100' below the Artesian Zone and tapered Oil string. Will perforate and stimulate as needed.

Mud Program: FW Gel and LCM to 1200' (or dry drill), water to TD.

BOP Program: BOP's will be installed on 7" casing and tested for operational.

APPROVAL VALID
FOR 90 DAYS UNLESS
DRILLING COMMENCED,

EXPIRES 7-25-74

IN ABOVE SPACE DESCRIBE PROPOSED PROGRAM: IF PROPOSAL IS TO DEEPEN OR PLUG BACK, GIVE DATA ON PRESENT PRODUCTIVE ZONE AND PROPOSED NEW PRODUCTIVE ZONE. GIVE BLOWOUT PREVENTER PROGRAM, IF ANY.

I hereby certify that the information above is true and complete to the best of my knowledge and belief.

Signed Eddie L. Linares Title Engineer Date 4-23-74

(This space for State Use)

APPROVED BY W. A. Gressett TITLE OIL AND GAS INSPECTOR DATE APR 25 1974

CONDITIONS OF APPROVAL, IF ANY:

Cement must be circulated to
surface behind 10 3/4" - 7" casing

Notify N.M.O.C.C. in sufficient
time to witness cementing
the 7" casing

NEW MEXICO OIL CONSERVATION COMMISSION
WELL LOCATION AND ACREAGE DEDICATION PLAT

Form C-102
Supersedes C-128
Effective 1-1-65

All distances must be from the outer boundaries of the Section.

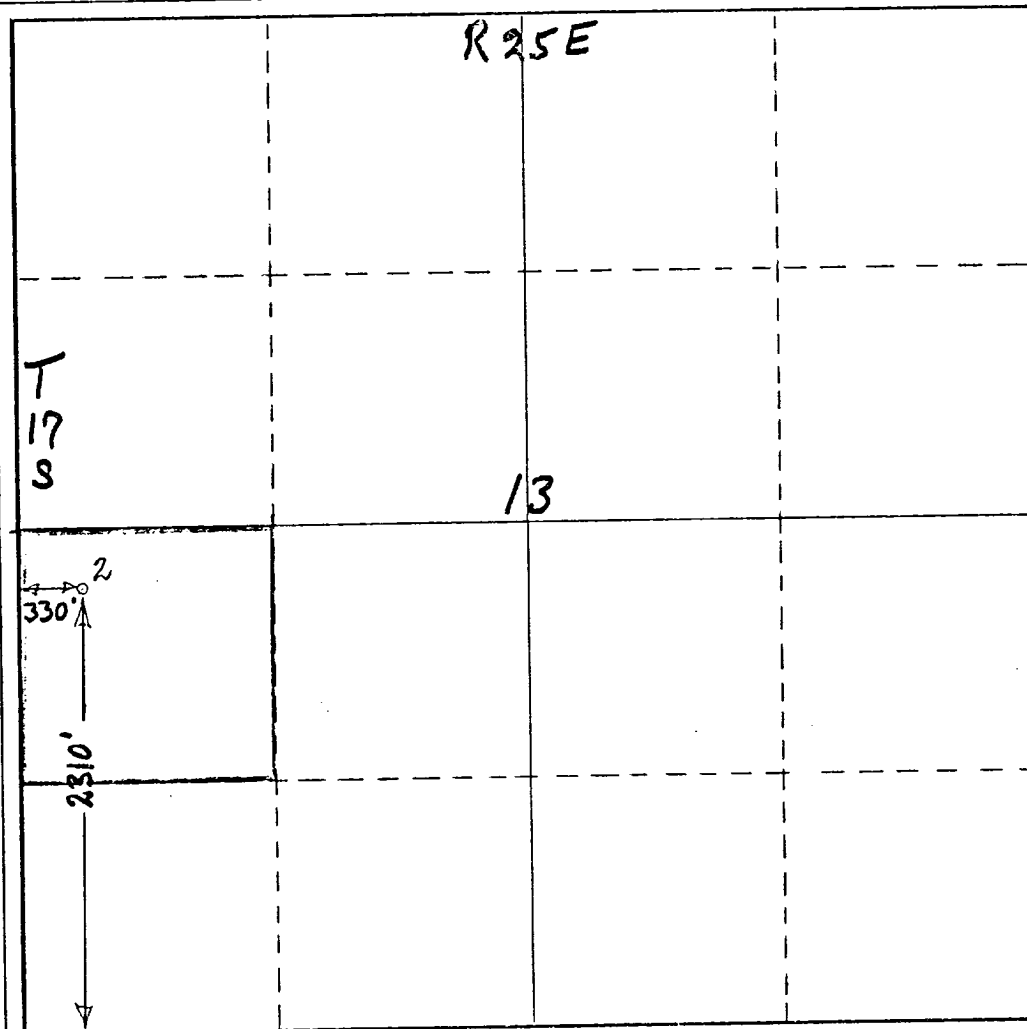
Operator Yates Petroleum Corporation			Lease Frey		Well No. 2
Unit Letter L	Section 13	Township 17S	Range 25E	County Eddy	
Actual Footage Location of Well: 330 feet from the West line and 2310 feet from the South line					
Ground Level Elev. 3465	Producing Formation San Andres		Pool Eagle Creek (S.A.)		Dedicated Acreage: 40 Acres

1. Outline the acreage dedicated to the subject well by colored pencil or hachure marks on the plat below.
2. If more than one lease is dedicated to the well, outline each and identify the ownership thereof (both as to working interest and royalty).
3. If more than one lease of different ownership is dedicated to the well, have the interests of all owners been consolidated by communitization, unitization, force-pooling, etc?

☐ Yes ☐ No If answer is "yes," type of consolidation _____

If answer is "no," list the owners and tract descriptions which have actually been consolidated. (Use reverse side of this form if necessary.) _____

No allowable will be assigned to the well until all interests have been consolidated (by communitization, unitization, forced-pooling, or otherwise) or until a non-standard unit, eliminating such interests, has been approved by the Commission.



CERTIFICATION

I hereby certify that the information contained herein is true and complete to the best of my knowledge and belief.

Eddie M. Mahfood

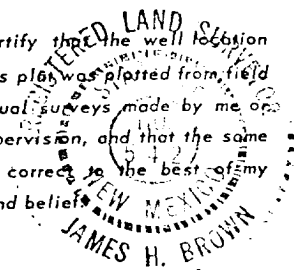
Name
Eddie M. Mahfood

Position
Engineer

Company
Yates Petroleum Corp.

Date
4-23-74

I hereby certify that the well location shown on this plat was plotted from field notes of actual surveys made by me or under my supervision, and that the same is true and correct to the best of my knowledge and belief.



Date Surveyed
April 23rd 1974
Registered Professional Engineer
and/or Land Surveyor

James H. Brown
Certificate No. **5412**