

NO. OF COPIES RECEIVED	3
DISTRIBUTION	
SANTA FE	1
FILE	1
U.S.G.S.	3
LAND OFFICE	
OPERATOR	1

NEW MEXICO OIL CONSERVATION COMMISSION

RECEIVED

30-015-21205  
Form C-101  
Revised 1-1-65

OCT 23 1975

RESUBMITTED REPORT

O.C.C.

APPLICATION FOR PERMIT TO DRILL, DEEPEN, OR PLUG BACK

1a. Type of Work		7. Unit Agreement Name	
b. Type of Well DRILL <input checked="" type="checkbox"/> DEEPEN <input type="checkbox"/> PLUG BACK <input type="checkbox"/> OIL WELL <input checked="" type="checkbox"/> GAS WELL <input type="checkbox"/> OTHER <input type="checkbox"/> SINGLE ZONE <input type="checkbox"/> MULTIPLE ZONE <input type="checkbox"/>		8. Farm or Lease Name Gissler "AV"	
2. Name of Operator Yates Petroleum Corporation ✓		9. Well No. 11	
3. Address of Operator 207 South 4th Street - Artesia, NM 88210		10. Field and Pool, or Wildcat Eagle Creek S.A.	
4. Location of Well UNIT LETTER M LOCATED 330 FEET FROM THE West LINE AND 990 FEET FROM THE South LINE OF SEC. 23 TWP. 17S RGE. 25E NMPM		12. County Eddy	
19. Proposed Depth Approx 1500'		19A. Formation San Andres	
20. Rotary or C.T. Rotary		21. Elevations (Show whether DF, RT, etc.) 3510' GR	
21A. Kind & Status Plug. Bond Blanket		21B. Drilling Contractor Byrd Drilling Co.	
22. Approx. Date Work will start As soon as possible			

## PROPOSED CASING AND CEMENT PROGRAM

SIZE OF HOLE	SIZE OF CASING	WEIGHT PER FOOT	SETTING DEPTH	SACKS OF CEMENT	EST. TOP
14-3/4"	10-3/4"	32#	300' Approx	175	Circulate
9-7/8"	7"	20#	1180 "	400	Circulate
6 1/4"	4 1/2 & 5 1/2"	9.5 & 15.5#	1500' "	125	

Propose to drill a San Andres test. Approx. 300' of 10-3/4" casing will be run and cemented to the surface to shut off surface gravel and cavings, and 7" casing will be run 100' below the Artesian Zone and cemented to the surface. If production is encountered a tapered oil string will be run and cemented, perforated and Sand Frac'd for production.

Mud Program: - Fresh water mud W/LCM from surface to 1180', fresh water to TD.

BOP Program: - BOP's to be installed on 7" casing and tested daily.

APPROVAL VALID  
FOR 90 DAYS UNLESS  
DRILLING COMMENCED,

EXPIRES 1-24-76

IN ABOVE SPACE DESCRIBE PROPOSED PROGRAM: IF PROPOSAL IS TO DEEPEN OR PLUG BACK, GIVE DATA ON PRESENT PRODUCTIVE ZONE AND PROPOSED NEW PRODUCTIVE ZONE. GIVE BLOWOUT PREVENTER PROGRAM, IF ANY.

I hereby certify that the information above is true and complete to the best of my knowledge and belief.

Signed Eddie H. [Signature] Title Engineer Date 10-23-75

(This space for State Use)

APPROVED BY W.A. [Signature] TITLE SUPERVISOR, DISTRICT II DATE OCT 24 1975

CONDITIONS OF APPROVAL, IF ANY:

Cement must be circulated to  
surface behind 10 3/4" & 7" casing

Notify N.M.O.C.C. in sufficient  
time to witness cementing  
the 7" casing

NL MEXICO OIL CONSERVATION COMMISSION  
WELL LOCATION AND ACREAGE DEDICATION PLAT

Form C-102  
Supersedes C-120  
Effective 1-1-65

All distances must be from the outer boundaries of the Section.

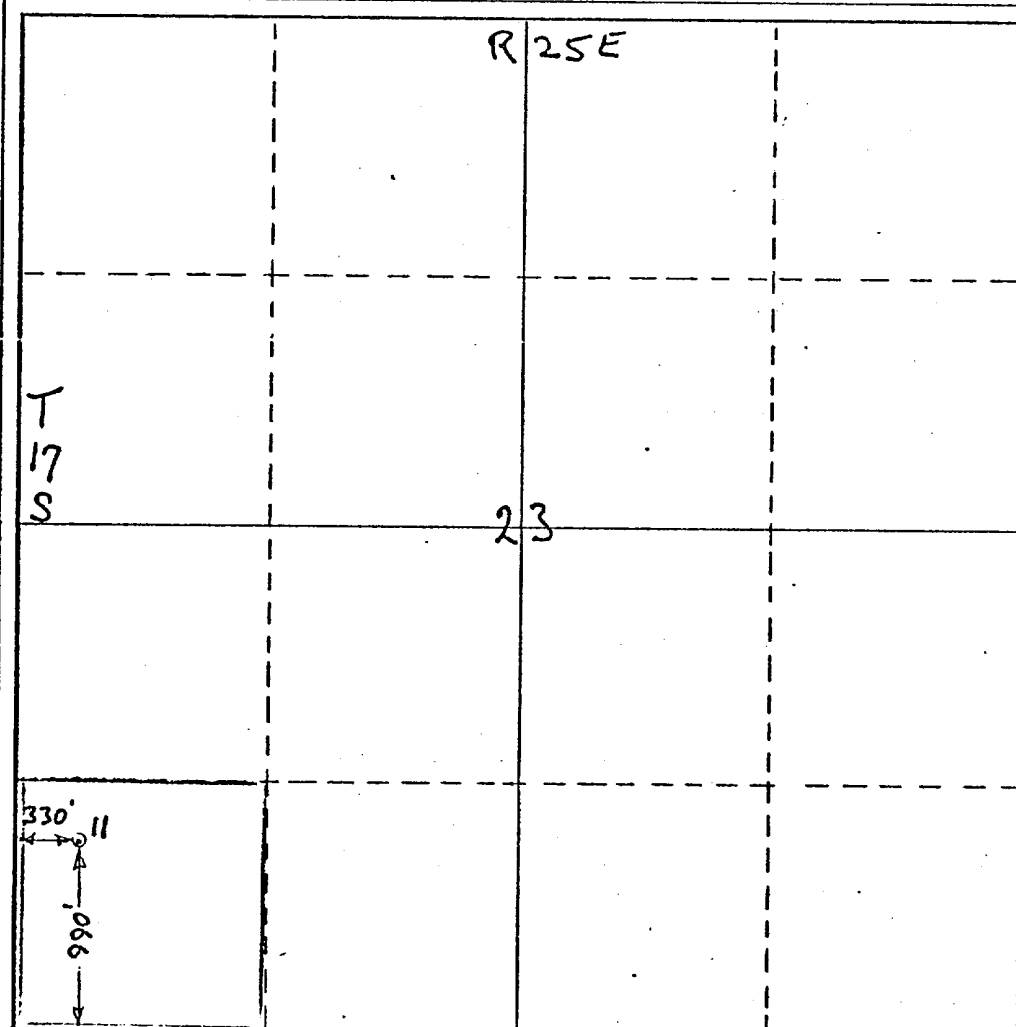
Operator <b>Yates Petroleum Corporation</b>			Lease <b>Gissler AV</b>		Well No. <b>11</b>
Unit Letter <b>M</b>	Section <b>23</b>	Township <b>17S</b>	Range <b>25E</b>	County <b>Eddy</b>	
Actual Footage Location of Well: <b>330</b> feet from the <b>West</b> line and <b>990</b> feet from the <b>South</b> line					
Ground Level Elev. <b>3510</b>		Producing Formation <b>San Andres</b>		Pool <b>Eagle Creek, (S.A.)</b>	Dedicated Acreage: <b>40</b> Acres

1. Outline the acreage dedicated to the subject well by colored pencil or hachure marks on the plat below.
2. If more than one lease is dedicated to the well, outline each and identify the ownership thereof (both as to working interest and royalty).
3. If more than one lease of different ownership is dedicated to the well, have the interests of all owners been consolidated by communitization, unitization, force-pooling, etc?

☐ Yes ☐ No If answer is "yes," type of consolidation \_\_\_\_\_

If answer is "no," list the owners and tract descriptions which have actually been consolidated. (Use reverse side of this form if necessary.) \_\_\_\_\_

No allowable will be assigned to the well until all interests have been consolidated (by communitization, unitization, forced-pooling, or otherwise) or until a non-standard unit, eliminating such interests, has been approved by the Commission.



CERTIFICATION

I hereby certify that the information contained herein is true and complete to the best of my knowledge and belief.

*Eddie M. Mahfood*  
Name  
**Eddie M. Mahfood**

Position  
**Engineer**

Company  
**Yates Petroleum Corp.**

Date  
**3-26-74**

I hereby certify that the well location shown on this plat was plotted from field notes of actual surveys made by me or under my supervision, and that the same is true and correct to the best of my knowledge and belief.

Date Surveyed  
**March 27<sup>th</sup> 1974**

Registered Professional Engineer and/or Land Surveyor

*James H. Brown*  
Certificate No. **542**

Casinghead or Bradenhead

THE FOLLOWING CONSTITUTE MINIMUM BLOWOUT PREVENTER REQUIREMENTS

1. All preventers to be hydraulically operated with secondary manual controls installed prior to drilling out from under casing.
2. Choke outlet to be a minimum of 4" diameter.
3. Kill line to be of all steel construction of 2" minimum diameter.
4. All connections from operating manifolds to preventers to be all steel hole or tube a minimum of one inch in diameter.
5. The available closing pressure shall be at least 15% in excess of that