

C - - ✓

NO. OF COPIES RECEIVED	5
DISTRIBUTION	
SANTA FE	1
FILE	1 ✓
U.S.G.S.	2
LAND OFFICE	
OPERATOR	1

NEW MEXICO OIL CONSERVATION COMMISSION

RECEIVED

MAY 15 1974

O. C. C.
ARTESIA, OFFICE

30-015-21214

Form C-101
Revised 1-4-65

5A. Indicate Type of Lease	
STATE <input type="checkbox"/>	FEE <input checked="" type="checkbox"/>
5. State Oil & Gas Lease No.	
7. Unit Agreement Name	
8. Farm or Lease Name	
Winters DN	
9. Well No.	
1	
10. Field and Pool, or Wildcat	
Eagle Creek S.A.	
12. County	
Eddy	

APPLICATION FOR PERMIT TO DRILL, DEEPEN, OR PLUG BACK

1a. Type of Work		DRILL <input checked="" type="checkbox"/>		DEEPEN <input type="checkbox"/>		PLUG BACK <input type="checkbox"/>	
b. Type of Well		OIL WELL <input checked="" type="checkbox"/>		GAS WELL <input type="checkbox"/>		OTHER <input type="checkbox"/>	
2. Name of Operator		Yates Petroleum Corporation		SINGLE ZONE <input checked="" type="checkbox"/>		MULTIPLE ZONE <input type="checkbox"/>	
3. Address of Operator		207 So. 4th St., Artesia, New Mexico 88210		UNIT LETTER P		LOCATED 990 FEET FROM THE South LINE	
4. Location of Well		AND 990 FEET FROM THE East LINE OF SEC. 14 TWP. 17S RGE. 25E NMPM		19. Proposed Depth		19A. Formation	
				Approx 1500'		San Andres	
21. Elevations (Show whether DF, RT, etc.)		21A. Kind & Status Plug. Bond		21B. Drilling Contractor		22. Approx. Date Work will start	
		Blanket		Cactus Drilling Co.		As soon as approved	

23.

PROPOSED CASING AND CEMENT PROGRAM

SIZE OF HOLE	SIZE OF CASING	WEIGHT PER FOOT	SETTING DEPTH	SACKS OF CEMENT	EST. TOP
14 1/2"	10 3/4"	30#	Approx 300'	200	Circulate
9 1/2"	7"	23#	Approx 1190'	400	Circulate
6 1/4"	4 1/2" & 4 1/2"	9.5# & 15.5#	Approx 1500'	125	Circulate

Propose to drill a San Andres test with approximately 300' of Surface Casing run to shut off gravel and caving. 7" intermediate casing will be run and set 100' below the Artesian Zone and if commercial production is encountered a tapered oil string will be run, perforated and stimulated for production.

Mud Program: FW Gel and LCM to 1190' (or dry drill), water to TD.

BOP Program: BOP's will be installed on 7" casing and tested daily.

APPROVAL VALID
FOR 90 DAYS UNLESS
DRILLING COMMENCED,

EXPIRES 8-16-74

IN ABOVE SPACE DESCRIBE PROPOSED PROGRAM: IF PROPOSAL IS TO DEEPEN OR PLUG BACK, GIVE DATA ON PRESENT PRODUCTIVE ZONE AND PROPOSED NEW PRODUCTIVE ZONE. GIVE BLOWOUT PREVENTER PROGRAM, IF ANY.

I hereby certify that the information above is true and complete to the best of my knowledge and belief.

Signed Eduardo M. Valdez Title Engineer Date 5-14-74

(This space for State Use)

APPROVED BY W. A. Gross TITLE OIL AND GAS INSPECTOR DATE MAY 16 1974

CONDITIONS OF APPROVAL, IF ANY:

Cement must be circulated to
surface behind 7" casing

Notify N.M.O.C.C. in sufficient
time to witness cementing
the 7" casing

NE EXICO OIL CONSERVATION COMMISSIC
WELL LOCATION AND ACREAGE DEDICATION PLAT

Form C-102
Supersedes C-128
Effective 1-1-65

All distances must be from the outer boundaries of the Section.

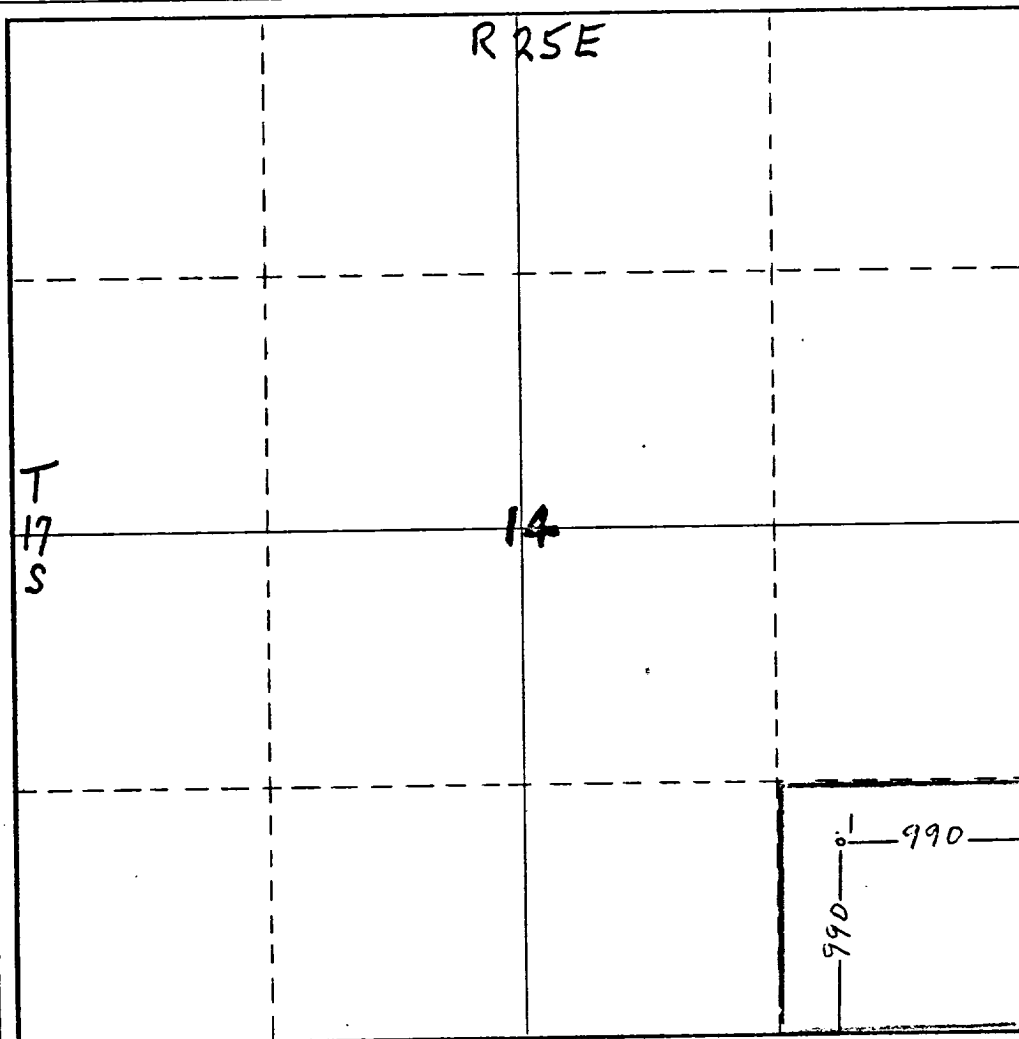
Operator Yates Petroleum Corporation			Lease Winters "DN"		Well No. 1
Unit Letter P	Section 14	Township 17S	Range 25E	County Eddy	
Actual Footage Location of Well: 990 feet from the South line and 990 feet from the East line					
Ground Level Elev. 3472' GR	Producing Formation San Andres		Pool Eagle Creek S.A.		Dedicated Acreage: 40 Acres

1. Outline the acreage dedicated to the subject well by colored pencil or hachure marks on the plat below.
2. If more than one lease is dedicated to the well, outline each and identify the ownership thereof (both as to working interest and royalty).
3. If more than one lease of different ownership is dedicated to the well, have the interests of all owners been consolidated by communitization, unitization, force-pooling, etc?

☐ Yes ☐ No If answer is "yes," type of consolidation _____

If answer is "no," list the owners and tract descriptions which have actually been consolidated. (Use reverse side of this form if necessary.) _____

No allowable will be assigned to the well until all interests have been consolidated (by communitization, unitization, forced-pooling, or otherwise) or until a non-standard unit, eliminating such interests, has been approved by the Commission.



CERTIFICATION

I hereby certify that the information contained herein is true and complete to the best of my knowledge and belief.

Eddie M. Mahfood

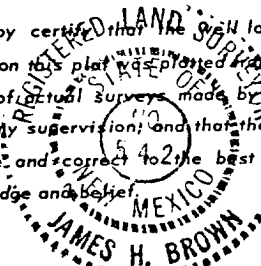
Name
Eddie M. Mahfood

Position
Engineer

Company
Yates Pet. Corp.

Date
5-13-74

I hereby certify that the well location shown on this plat was plotted from field notes of actual surveys made by me or under my supervision; and that the same is true and correct to the best of my knowledge and belief.



Date Surveyed
May 13th 1974
Registered Professional Engineer
and/or Land Surveyor

James H. Brown
Certificate No. 542