

NO. COPIES RECEIVED	5
DISTRIBUTION	
SANTA FE	1
FILE	1
U.S.G.S.	2
LAND OFFICE	
OPERATOR	1

NEW MEXICO OIL CONSERVATION COMMISSION
RECEIVED
MAY 21 1974

30-015-21217
Form C-101
Revised 1-1-65

APPLICATION FOR PERMIT TO DRILL, DEEPEN, OR PLUG BACK				5A. Indicate Type of Lease STATE <input type="checkbox"/> FEE <input checked="" type="checkbox"/>	
1a. Type of Work b. Type of Well OIL WELL <input checked="" type="checkbox"/> GAS WELL <input type="checkbox"/> OTHER <input type="checkbox"/> DEEPEN <input type="checkbox"/> PLUG BACK <input type="checkbox"/> SINGLE ZONE <input checked="" type="checkbox"/> MULTIPLE ZONE <input type="checkbox"/>				5. State Oil & Gas Lease No.	
2. Name of Operator Yates Petroleum Corporation				7. Unit Agreement Name	
3. Address of Operator 207 So. 4th Street, Artesia, New Mexico 88210				8. Farm or Lease Name Jackson AT	
4. Location of Well UNIT LETTER M LOCATED 330 FEET FROM THE West LINE AND 990 FEET FROM THE South LINE OF SEC. 13 TWP. 17S RGE. 25E NMPM				9. Well No. 5	
				10. Field and Pool, or Wildcat Eagle Creek, SA	
				12. County Eddy	
21. Elevations (Show whether DE, RT, etc.) 3464 GR		21A. Kind & Status Plug. Bond Blanket		19. Proposed Depth 1500	
				19A. Formation San Andres	
				20. Rotary or C.T. Rotary	
		21B. Drilling Contractor Cactus Drilling Co.		22. Approx. Date Work will start 5-22-74	

23. PROPOSED CASING AND CEMENT PROGRAM					
SIZE OF HOLE	SIZE OF CASING	WEIGHT PER FOOT	SETTING DEPTH	SACKS OF CEMENT	EST. TOP
14 3/4"	10 3/4"	32#	Approx. 300	175	Circulate
9 1/2"	7"	23#	Approx. 1190	450	Circulate
6 1/4"	4 1/2" and 5 1/2"	9.5# and 15.5#	Approx. 1500	125	Circulate

Propose to drill San Andres test with approximately 300' of surface casing to shut off gravel and caving, intermediate casing set 100' below the Artesian Zone and a tapered oil string, perforate and stimulate as needed for production.
Mud Program: FW Gel and LCM to 1190 or dry drill, FW to TD.
BOP Program: To install BOP's on intermediate casing and test for operational.

APPROVAL VALID
FOR 90 DAYS UNLESS
DRILLING COMMENCED,

EXPIRES 8-22-74

IN ABOVE SPACE DESCRIBE PROPOSED PROGRAM: IF PROPOSAL IS TO DEEPEN OR PLUG BACK, GIVE DATA ON PRESENT PRODUCTIVE ZONE AND PROPOSED NEW PRODUCTIVE ZONE. GIVE BLOWOUT PREVENTER PROGRAM, IF ANY.

I hereby certify that the information above is true and complete to the best of my knowledge and belief.

Signed Eddy L. Qualiford Title Engineer Date May 21, 1974

(This space for State Use)

APPROVED BY W.A. Gressett TITLE OIL AND GAS INSPECTOR

DATE MAY 22 1974

CONDITIONS OF APPROVAL, IF ANY:

Cement must be circulated to surface behind 10 3/4" casing

Notify N.M.O.C.C. in sufficient time to witness cementing the 7" casing

NEW MEXICO OIL CONSERVATION COMMISSION
WELL LOCATION AND ACREAGE DEDICATION

Form C-102
Supersedes C-128
Effective 1-1-65

All distances must be from the outer boundaries of the Section.

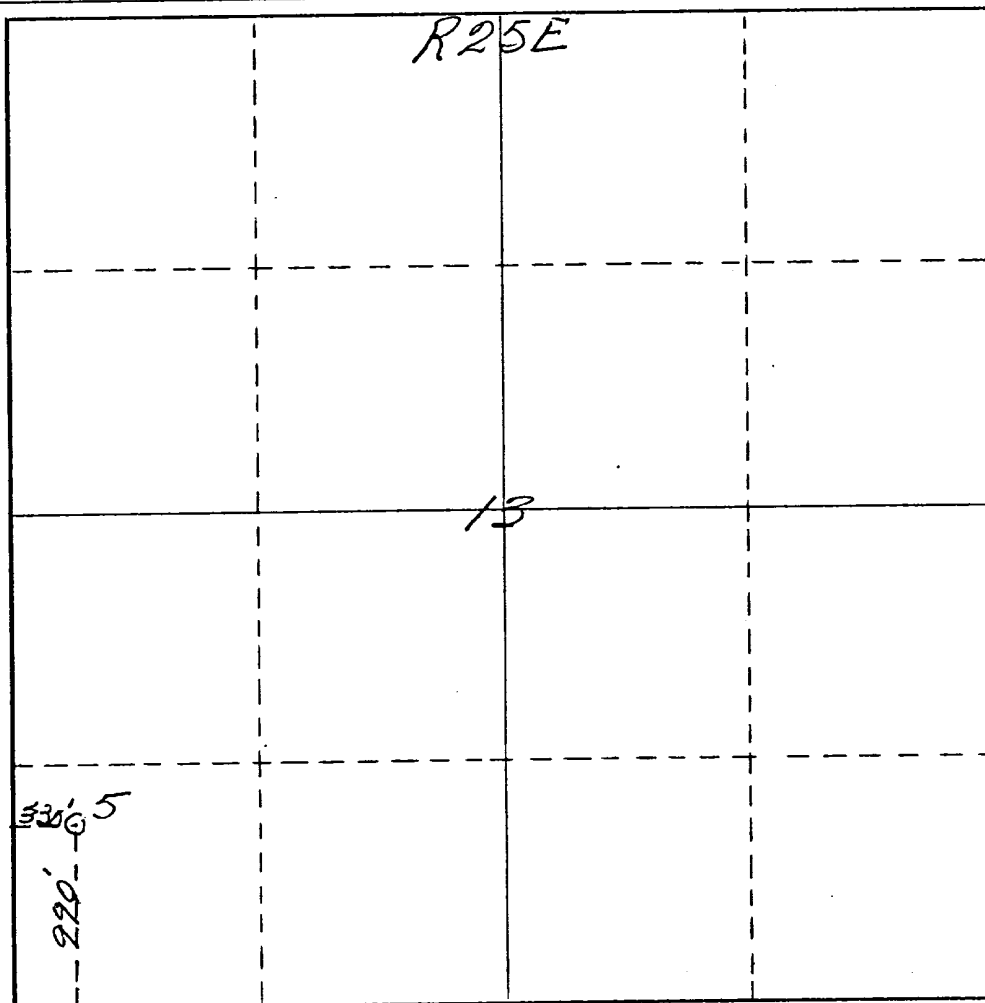
Operator <i>Yates Petroleum Corp</i>			Lease <i>Jackson AT</i>		Well No. <i>5</i>
Unit Letter <i>M</i>	Section <i>13</i>	Township <i>17 South</i>	Range <i>35 East</i>	County <i>Eddy</i>	
Actual Footage Location of Well: <i>990</i> feet from the <i>South</i> line and <i>330</i> feet from the <i>West</i> line					
Ground Level Elev. <i>3464</i>	Producing Formation <i>San Andres</i>		Pool <i>Eagle Creek, S.A.</i>		Dedicated Acreage: <i>40</i> Acres

1. Outline the acreage dedicated to the subject well by colored pencil or hachure marks on the plat below.
2. If more than one lease is dedicated to the well, outline each and identify the ownership thereof (both as to working interest and royalty).
3. If more than one lease of different ownership is dedicated to the well, have the interests of all owners been consolidated by communitization, unitization, force-pooling, etc?

☐ Yes ☐ No If answer is "yes," type of consolidation _____

If answer is "no," list the owners and tract descriptions which have actually been consolidated. (Use reverse side of this form if necessary.) _____

No allowable will be assigned to the well until all interests have been consolidated (by communitization, unitization, forced-pooling, or otherwise) or until a non-standard unit, eliminating such interests, has been approved by the Commission.



CERTIFICATION

I hereby certify that the information contained herein is true and complete to the best of my knowledge and belief.

Eddie M. Mahfood
Name

Eddie M. Mahfood

Position

Engineer

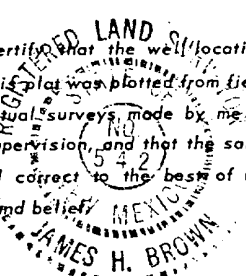
Company

Yates Petroleum Corporation

Date

May 21, 1974

I hereby certify that the well location shown on this plat was plotted from field notes of actual surveys made by me or under my supervision, and that the same is true and correct to the best of my knowledge and belief.



Date Surveyed

May 18th 1974

Registered Professional Engineer
and/or Land Surveyor

James H. Brown

Certificate No. *542*



7
17
5