

UNITED STATES  
DEPARTMENT OF THE INTERIOR  
GEOLOGICAL SURVEY

## APPLICATION FOR PERMIT TO DRILL, DEEPEN, OR PLUG BACK

1a. TYPE OF WORK DRILL ☒ DEEPEN ☐ PLUG BACK ☐

b. TYPE OF WELL  
OIL WELL ☒ GAS WELL ☐ OTHER ☐ SINGLE ZONE ☐ MULTIPLE ZONE ☐

2. NAME OF OPERATOR JACK J. GRYNBERG

3. ADDRESS OF OPERATOR 1050 - 17th Street, Suite 1950, Denver, CO 80202

4. LOCATION OF WELL (Report location clearly and in accordance with any State requirements)  
At surface 990 FSL 330 FWL (SW SW)  
At proposed prod. zone Section 28 T 17 S - R 25 E (As Above) MAY 27 1974

14. DISTANCE IN MILES AND DIRECTION FROM NEAREST TOWN OR POST OFFICE\* Approx. 5 miles southwest of Artesia, New Mexico O. C. C.

15. DISTANCE FROM PROPOSED\* LOCATION TO NEAREST PROPERTY OR LEASE LINE, FT. (Also to nearest drlg. unit line, if any) 330'

16. NO. OF ACRES IN LEASE 240

17. NO. OF ACRES ASSIGNED TO THIS WELL 40

18. DISTANCE FROM PROPOSED LOCATION\* TO NEAREST WELL, DRILLING, COMPLETED, OR APPLIED FOR, ON THIS LEASE, FT. None

19. PROPOSED DEPTH 1500'

20. ROTARY OR CABLE TOOLS Rotary

21. ELEVATIONS (Show whether DF, RT, GR, etc.)

22. APPROX. DATE WORK WILL START\* April 20, 1974

23. PROPOSED CASING AND CEMENTING PROGRAM				
SIZE OF HOLE	SIZE OF CASING	WEIGHT PER FOOT	SETTING DEPTH	QUANTITY OF CEMENT
13 3/4	10 3/4	32#	150'+	Circulated
9 7/8	7	20#	1125'±	Circulated
6 1/4	4 1/2	9.5# & 10.5#	1500'±	Circulated

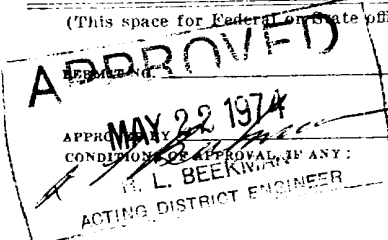
Proposed program is to drill 13 3/4" hole to 150'± and run 10 3/4" casing to cover gravel and fine sands. Hole size will then be reduced to 9 7/8", and 7" casing will be set 100' below the artesian water zone. Hole size will be reduced to 6 1/4" to an estimated total depth of 1500' in the San Andres formation. All substantial shows will be properly evaluated, and E-logs will be run. If commercial production is indicated, a long string of 4 1/2" casing will be run, and a completion will be attempted.

Rotary tools will be equipped with adequate blowout preventers. This well will be pretested prior to drilling, and tested daily with results recorded.

IN ABOVE SPACE DESCRIBE PROPOSED PROGRAM: If proposal is to deepen or plug back, give data on present productive zone. If proposal is to drill or deepen directionally, give pertinent data on subsurface locations and measured and true vertical depths. Give blowout preventer program, if any.

24. SIGNED *Cecil D. Gritz* TITLE Cecil D. Gritz DATE 4/3/74  
Petroleum Engineer

(This space for Federal or State office use)



APPROVAL DATE

DECLARED WATER BASIN  
10 3/4"

CEMENT BEHIND THE  
CASING MUST BE CIRCULATED  
2"

THIS APPROVAL IS RESCINDED IF OPERATIONS  
ARE NOT COMMENCED WITHIN 3 MONTHS.  
EXPIRES AUG 22 1974  
See Instructions On Reverse Side

NOTIFY USGS IN SUFFICIENT TIME TO

WITNESS CEMENTING THE 2" CASING

NEW MEXICO OIL CONSERVATION COMMISSION  
WELL LOCATION AND ACREAGE DEDICATION PLAT

Form C-102  
Supersedes C-128  
Effective 1-1-65

All distances must be from the outer boundaries of the Section.

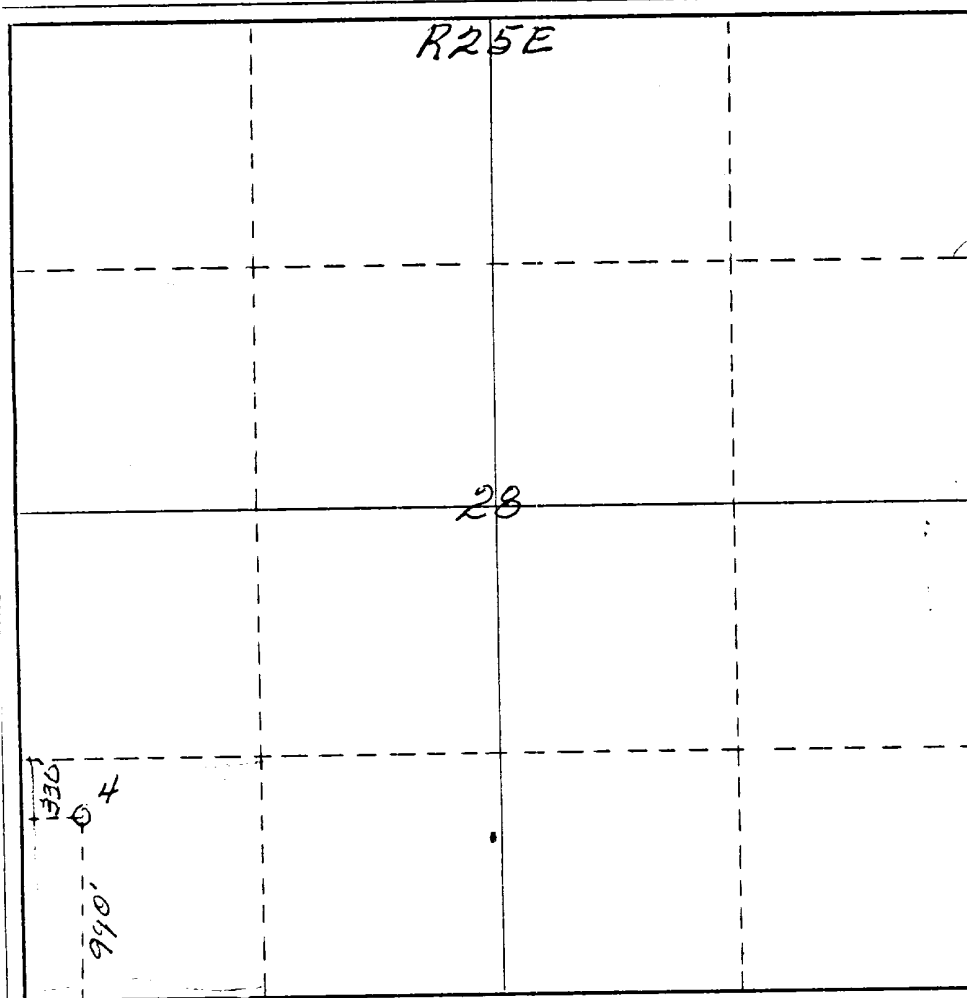
Operator <i>Jack Grynsberg</i>		Lease <i>Federal GR</i>		Well No. <i>4</i>	
East Letter <i>M</i>	Section <i>28</i>	Township <i>17 South</i>	Range <i>25 East</i>	County <i>Eddy</i>	
Actual Footage Location of Well: <i>990</i> feet from the <i>South</i> line and <i>330</i> feet from the <i>West</i> line					
Ground Level Elev. <i>3582</i>	Producing Formation <i>SA</i>		Pool <i>Eagle Creek SA</i>	Dedicated Acreage: <i>40</i> Acres	

- Outline the acreage dedicated to the subject well by colored pencil or hachure marks on the plat below.
- If more than one lease is dedicated to the well, outline each and identify the ownership thereof (both as to working interest and royalty).
- If more than one lease of different ownership is dedicated to the well, have the interests of all owners been consolidated by communitization, unitization, force-pooling, etc?

☐ Yes ☐ No If answer is "yes," type of consolidation \_\_\_\_\_

If answer is "no," list the owners and tract descriptions which have actually been consolidated. (Use reverse side of this form if necessary.) \_\_\_\_\_

No allowable will be assigned to the well until all interests have been consolidated (by communitization, unitization, forced-pooling, or otherwise) or until a non-standard unit, eliminating such interests, has been approved by the Commission.



CERTIFICATION

I hereby certify that the information contained herein is true and complete to the best of my knowledge and belief.

Name

Position

Company

Date

*5-13-74*

RECEIVED  
I hereby certify that the well location shown on this plat was obtained from field notes of actual surveys made by me or under my supervision and that the same is true and correct to the best of my knowledge and belief.  
U.S. GEOLOGICAL SURVEY  
ARTESIA, NEW MEXICO  
JAMES H. BROWN

Date Surveyed

Registered Professional Engineer and/or Land Surveyor

Certificate No.

*542*

T  
17  
S

# LESSEE'S DEVELOPMENT PLAN FOR SURFACE USE

(For U. S. Geological Survey)

## ITEM 1: EXISTING ROADS AND LOCATION OF MAIN HIGHWAY EXIT

A main highway exit is located approximately 3½ miles west of Artesia, New Mexico on Highway 83. From this point a lateral secondary road leads south and west to Section 28 (See Exhibit 1).

## ITEM 2: PLANNED ACCESS ROADS

We plan to grade and maintain an existing access road which leads south from the lateral road. An extension of this access road to the location will be constructed and maintained. This road is intended to support only the necessary vehicular traffic needed to conduct drilling operations. (See Exhibit 1)

## ITEM 3: LOCATION OF WELL

990' FSL 330'FWL  
SW/SW Section 28, T 17 S - R 25 E, Eddy County, New Mexico  
(See attached plat and Exhibit 1)

## ITEM 4: LATERAL ROADS TO WELL LOCATION

A lateral secondary road leads south and west to Section 28 (See Exhibit 1)

## ITEM 5: LOCATION OF TANK BATTERIES AND FLOW LINES

Tank battery will be constructed on the drilling location as approved by all parties before installation. Flow lines, if any, will follow right-of-way approved by Bureau of Land Management at a later date.

## ITEM 6: LOCATION AND TYPE OF WATER SUPPLY

To be determined. This information will follow.

## ITEM 7: WASTE DISPOSAL

Adequate deep burn pits for ordinary combustible trash, including protected and enclosed sumps for oil and other toxic wastes, if

**RECEIVED**

APR 10 1974

U. S. GEOLOGICAL SURVEY  
ARTESIA, NEW MEXICO

ITEM 10: LOCATION AND RIG LAYOUT  
ATTACHED

ITEM 11: SURFACE RESTORATION

Location will be restored to original physical contour, replanted and/or reseeded to original type vegetation to prevent erosion.

ITEM 12: MISCELLANEOUS INFORMATION PERTINENT TO ENVIRONMENTAL IMPACT

All areas of pits, sumps, and other excavations will be fenced and flagged during and after operations until such time as they can be back-filled, levelled and replanted. Vehicular traffic will be restricted only to the approved access routes and used only when necessary.

OPERATORS DRILLING PLAN

(For U.S. Geological Survey)

1. Surface Casing

10 3/4" 32.74# 150± H-40 new

2. Casingheads, Flanges & Spools

10" 2000 psi WP csg. head  
10" 2000 psi WP csg. spool  
2000 psi WP flanges, valves, and flow tees.

3. Intermediate Casing

7" 20# 1125'± K-55 used

4. Blowout Preventors

10" 900 2000 psi Double Hyd

Necessary fill, kill, and choke lines to insure complete control and safety.

5. Auxiliary Equipment

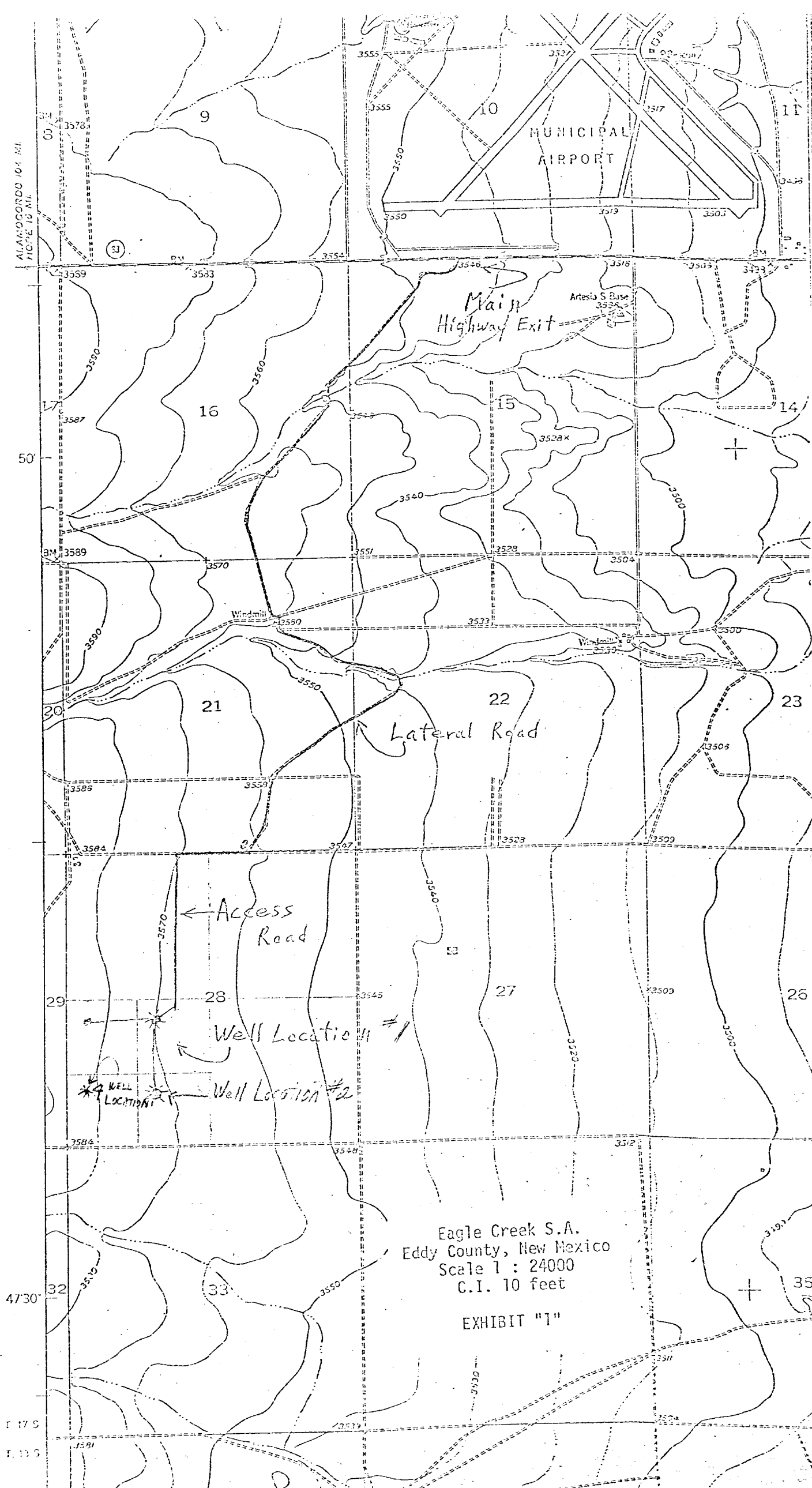
- a. Kelly Cork
- b. Stabbing Valve
- c. Additional items as needed.

6. Maximum Expected Pressures

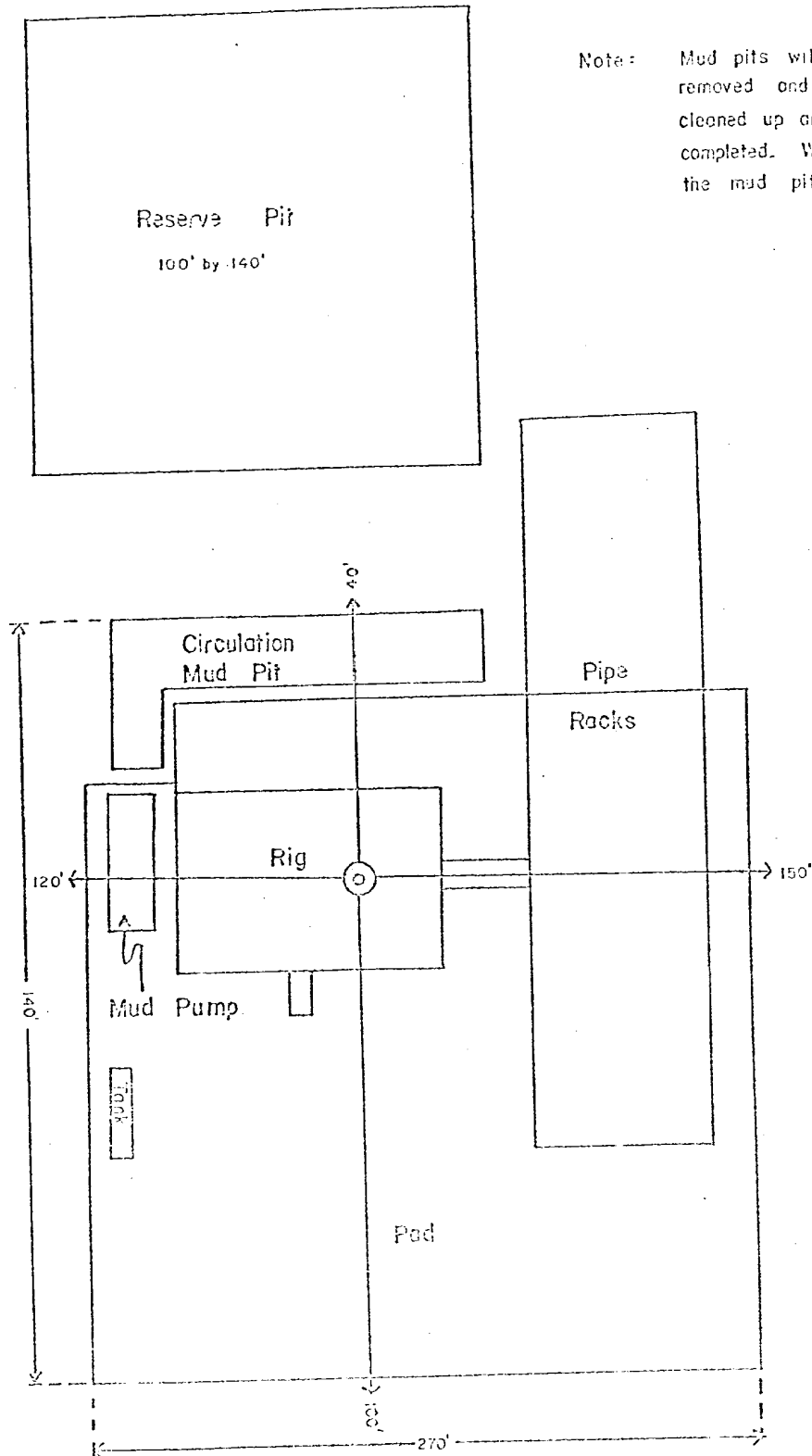
675 psi at TD  
at

7. Drilling Fluid Type

Water base



DRILLING LOCATION LAYOUT  
Schematic  
(Not Scaled)



Note: Mud pits will be filled. Drilling equipment removed and surface surrounding the pad cleaned up and leveled after the well is completed. Waste material to be buried in the mud pit.

