

N. M. G. C. C. COPY

SUBMIT IN TRIPPLICATE*

Form approved.
Budget Bureau No. 42-R1425.UNITED STATES
DEPARTMENT OF THE INTERIOR
GEOLOGICAL SURVEY

APPLICATION FOR PERMIT TO DRILL, DEEPEN, OR PLUG BACK

1a. TYPE OF WORK

DRILL ☒DEEPEN ☐PLUG BACK ☐

b. TYPE OF WELL

OIL
WELL ☒GAS
WELL ☐OTHER ☐SINGLE
ZONE ☐MULTIPLE
ZONE ☐

2. NAME OF OPERATOR

JACK J. GRYNBERG

3. ADDRESS OF OPERATOR

1050- 17th Street, Suite 1950, Denver, CO 80202

4. LOCATION OF WELL (Report location clearly and in accordance with any State requirements)

At surface

990 FEL 2310 FSL (NE SE)

At proposed prod. zone Section 29 T 17 S - R 25 E
(As Above)

14. DISTANCE IN MILES AND DIRECTION FROM NEAREST TOWN OR POST OFFICE*

Approx. 5 miles southwest of Artesia, New Mexico

15. DISTANCE FROM PROPOSED*

LOCATION TO NEAREST
PROPERTY OR LEASE LINE, FT.
(Also to nearest drig. unit line, if any)

330'

18. DISTANCE FROM PROPOSED LOCATION*
TO NEAREST WELL, DRILLING, COMPLETED,
OR APPLIED FOR, ON THIS LEASE, FT.

None

16. NO. OF ACRES IN ARTESIA, OFFICE

240

ACRES ASSIGNED
TO THIS WELL

40

19. PROPOSED DEPTH

1500'

20. ROTARY OR CABLE TOOLS

Rotary

21. ELEVATIONS (Show whether DF, RT, GR, etc.)

22. APPROX. DATE WORK WILL START*

April 26, 1974

23.

PROPOSED CASING AND CEMENTING PROGRAM

SIZE OF HOLE	SIZE OF CASING	WEIGHT PER FOOT	SETTING DEPTH	QUANTITY OF CEMENT
13 3/4	10 3/4	32#	150'±	Circulated
9 7/8	7	20#	1125'±	Circulated
6 1/4	4 1/2	9.5# & 10.5#	1500'±	Circulated

Proposed program is to drill 13 3/4" hole to 150'± and run 10 3/4" casing to cover gravel and fine sands. Hole size will then be reduced to 9 7/8", and 7" casing will be set 100' below the artesian water zone. Hole size will be reduced to 6 1/4" to an estimated total depth of 1500' in the San Andres formation. All substantial shows will be properly evaluated, and E-logs will be run. If commercial production is indicated, a long string of 4 1/2" casing will be run, and a completion will be attempted.

Rotary tools will be equipped with adequate blowout preventers. This equipment will be pretested prior to drilling, and tested daily with results recorded.

RECEIVED
APR 10 1974
U. S. GEOLOGICAL SURVEY
ARTESIA, NEW MEXICO

IN ABOVE SPACE DESCRIBE PROPOSED PROGRAM: If proposal is to deepen or plug back, give data on present productive zone and proposed new productive zone. If proposal is to drill or deepen directionally, give pertinent data on subsurface locations and measured and true vertical depths. Give blowout preventer program, if any.

24.

SIGNED

*Cecil D. Gritz*Cecil D. Gritz
TITLE Petroleum Engineer

DATE 4/3/74

(This space for Federal or State office use)

APPROVAL DATE

TITLE

DATE

APPROVED
MAY 22 1974APPROVED BY
COMMISSIONER, GEOLOGICAL SURVEYH. L. BEEKHOF
ACTING DISTRICT ENGINEERTHIS APPROVAL IS RESCINDED IF OPERATIONS
ARE NOT COMMENCED WITHIN 3 MONTHS.
AUG 22 1974DECLARED WATER BASIN
CEMENT BEHIND THE
Casing MUST BE CIRCULATEDNOTIFY USGS IN SUFFICIENT TIME TO
WITNESS CEMENTING THE 7" CASING

NEW MEXICO OIL CONSERVATION COMMISSION
WELL LOCATION AND ACREAGE DEDICATION PLAT

Form C-102
Supersedes C-128
Effective 1-1-65

All distances must be from the outer boundaries of the Section.

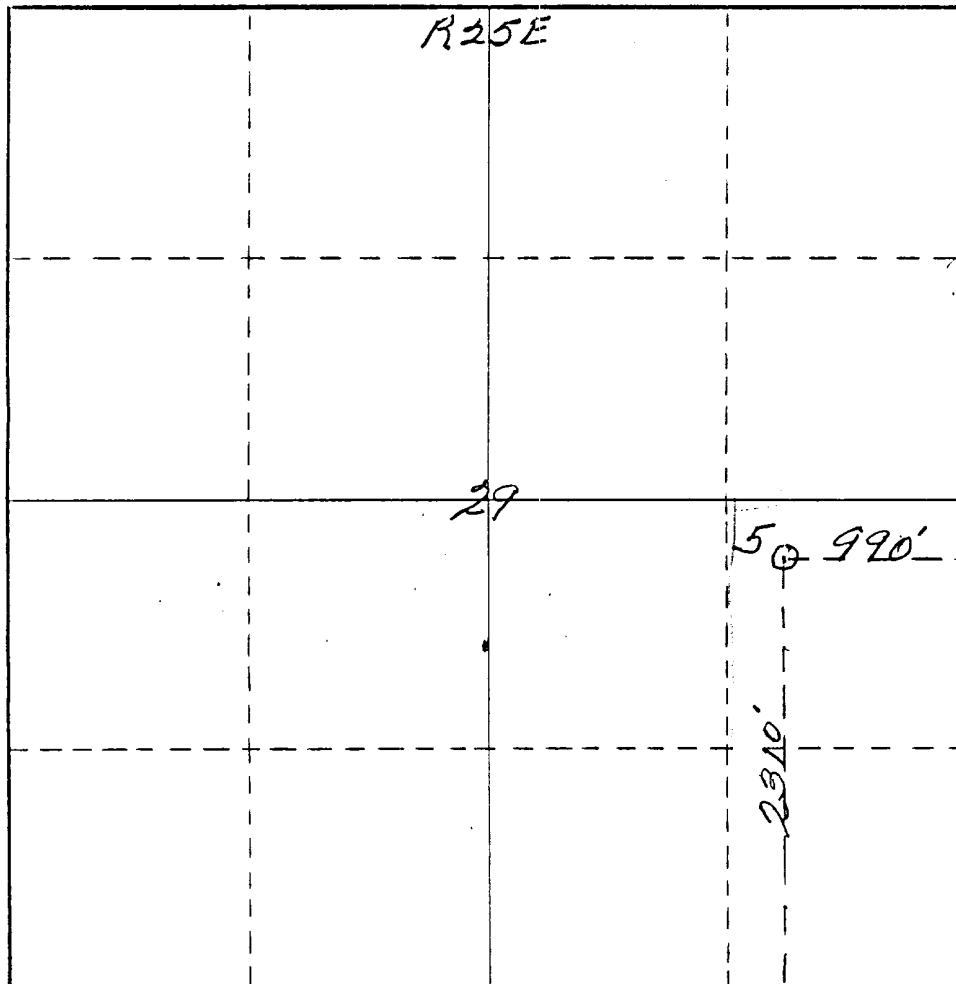
Owner <i>Jack Grynzberg</i>			Lease <i>Federal GR</i>			Well No. <i>5</i>		
Section <i>I</i>	Section <i>29</i>	Township <i>17 South</i>	Range <i>25 East</i>	County <i>Eddy</i>				
Actual Postage Location of Well: <i>2310</i> feet from the <i>South</i> line and <i>990</i> feet from the <i>East</i> line								
Ground Level Elev. <i>3591</i>	Producing Formation <i>SA</i>		Pool <i>Eagle Creek SA</i>			Dedicated Acreage: <i>40</i> Acres		

1. Outline the acreage dedicated to the subject well by colored pencil or hachure marks on the plat below.
2. If more than one lease is dedicated to the well, outline each and identify the ownership thereof (both as to working interest and royalty).
3. If more than one lease of different ownership is dedicated to the well, have the interests of all owners been consolidated by communitization, unitization, force-pooling, etc?

☐ Yes ☐ No If answer is "yes," type of consolidation _____

If answer is "no," list the owners and tract descriptions which have actually been consolidated. (Use reverse side of this form if necessary.) _____

No allowable will be assigned to the well until all interests have been consolidated (by communitization, unitization, forced-pooling, or otherwise) or until a non-standard unit, eliminating such interests, has been approved by the Commission.



CERTIFICATION

I hereby certify that the information contained herein is true and complete to the best of my knowledge and belief.

James H. Brown
Name

Position
Jack J. Grynzberg
Company

Date
5-13-74

RECEIVED
MAY 18 1974
U.S. GEOLOGICAL SURVEY
ALBUQUERQUE, NEW MEXICO

I hereby certify that the well location shown on this plat was derived from field notes of actual survey made by me or under my supervision and that the same is true and correct to the best of my knowledge and belief.

Date Surveyed
May 11th 1974
Registered Professional Engineer and/or Land Surveyor

James H. Brown
Certificate No. *542*

0 330 660 990 1320 1650 1980 2310 2640 2000 1500 1000 500 0

Memo

From
LELAND MERMIS

To
This well was ok.
9-20-74 and had a
leak between 4 1/2" and 7"
Cgt.

L. Mermis

LESSEE'S DEVELOPMENT PLAN FOR SURFACE USE

(For U. S. Geological Survey)

ITEM 1: EXISTING ROADS AND LOCATION OF MAIN HIGHWAY EXIT

A main highway exit is located approximately 3½ miles west of Artesia, New Mexico on Highway 83. From this point a lateral secondary road leads south and west to Section 28 (See Exhibit 1).

ITEM 2: PLANNED ACCESS ROADS

We plan to grade and maintain an existing access road which leads south from the lateral road. An extension of this access road to the location will be constructed and maintained. This road is intended to support only the necessary vehicular traffic needed to conduct drilling operations. (See Exhibit 1)

ITEM 3: LOCATION OF WELL

990 FEL 2310 FSL
NE/SE Section 29 T 17 S - R 25 E, Eddy County, New Mexico
(See attached plat and Exhibit 1)

ITEM 4: LATERAL ROADS TO WELL LOCATION

A lateral secondary road leads south and west to Section 28 (See Exhibit 1)

RECEIVED

APR 10 1974

U. S. GEOLOGICAL SURVEY

ITEM 5: LOCATION OF TANK BATTERIES AND FLOW LINES ARTESIA, NEW MEXICO

Tank battery will be constructed on the drilling location as approved by all parties before installation. Flow lines, if any, will follow right-of-way approved by Bureau of Land Management at a later date.

ITEM 6: LOCATION AND TYPE OF WATER SUPPLY

To be determined. This information will follow.

ITEM 7: WASTE DISPOSAL

Adequate deep burn pits for ordinary combustible trash, including protected and enclosed sumps for oil and other toxic wastes, if any. Burning of trash to be kept at a minimum.

ITEM 8: LOCATION OF CAMPS

None planned.

ITEM 10: LOCATION AND RIG LAYOUT

ATTACHED

ITEM 11: SURFACE RESTORATION

Location will be restored to original physical contour, replanted and/or reseeded to original type vegetation to prevent erosion.

ITEM 12: MISCELLANEOUS INFORMATION PERTINENT TO ENVIRONMENTAL IMPACT

All areas of pits, sumps, and other excavations will be fenced and flagged during and after operations until such time as they can be back-filled, levelled and replanted. Vehicular traffic will be restricted only to the approved access routes and used only when necessary.

OPERATORS DRILLING PLAN

(For U.S. Geological Survey)

1. Surface Casing

10 3/4" 32.74# 150± H-40 new

2. Casingheads, Flanges & Spools

10" 2000 psi WP csg. head
10" 2000 psi WP csg. spool
2000 psi WP flanges, valves, and flow tees.

3. Intermediate Casing

7" 20# 1125'± K-55 used

4. Blowout Preventors

10" 900 2000 psi Double Hyd

Necessary fill, kill, and choke lines to insure complete control and safety.

5. Auxiliary Equipment

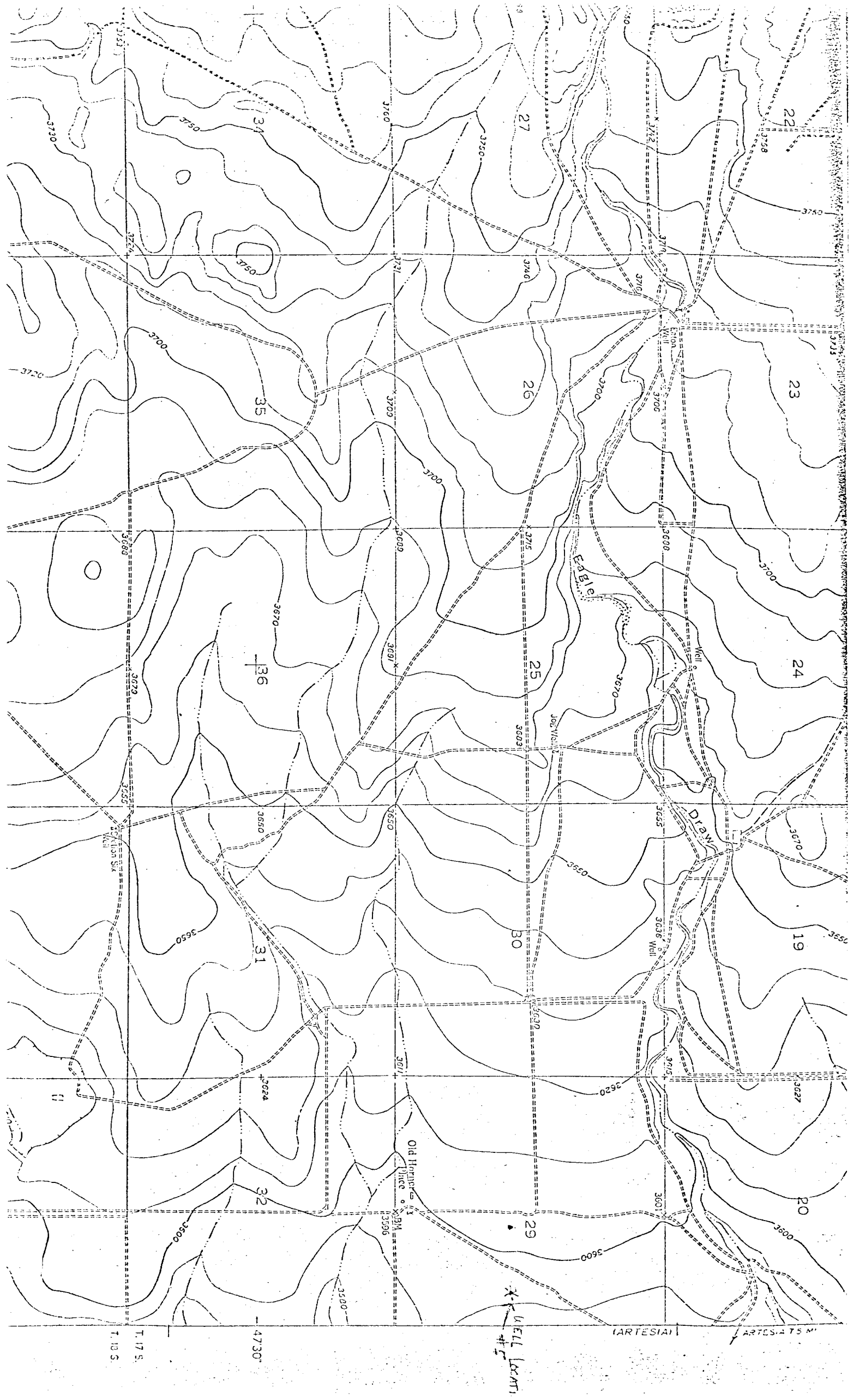
- a. Kelly Cork
- b. Stabbing Valve
- c. Additional items as needed.

6. Maximum Expected Pressures

_____ 675 psi _____ at _____ TD _____
_____ at _____

7. Drilling Fluid Type

Water base



DRILLING LOCATION LAYOUT

Schematic
(Not Scaled)

