

UNITED STATES
DEPARTMENT OF THE INTERIOR
GEOLOGICAL SURVEY

APPLICATION FOR PERMIT TO DRILL, DEEPEN, OR PLUG BACK

1a. TYPE OF WORK

DRILL ☒DEEPEN ☐PLUG BACK ☐

b. TYPE OF WELL

OIL
WELL ☒GAS
WELL ☐

OTHER

SINGLE
ZONE ☒MULTIPLE
ZONE ☐

2. NAME OF OPERATOR

Yates Petroleum Corporation

3. ADDRESS OF OPERATOR

207 So. 4th St., Artesia, New Mexico 88210

4. LOCATION OF WELL (Report location clearly and in accordance with any State requirements.)*

At surface

990' FWL and 1650' FSL of Sec. 29-17S-25E

At proposed prod. zone

14. DISTANCE IN MILES AND DIRECTION FROM NEAREST TOWN OR POST OFFICE*

Approx. 7 miles Southwest of Artesia

15. DISTANCE FROM PROPOSED*

LOCATION TO NEAREST

PROPERTY OR LEASE LINE, FT.

(Also to nearest drlg. unit line, if any)

330'

18. DISTANCE FROM PROPOSED LOCATION*

TO NEAREST WELL, DRILLING, COMPLETED,
OR APPLIED FOR, ON THIS LEASE, FT.

1043'

16. NO. OF ACRES IN LEASE

80

19. PROPOSED DEPTH

Approx 1400'

17. NO. OF ACRES ASSIGNED
TO THIS WELL

40

20. ROTARY OR CABLE TOOLS

Rotary

21. ELEVATIONS (Show whether DF, RT, GR, etc.)

3613 GR

22. APPROX. DATE WORK WILL START*

May 24, 1974

23.

PROPOSED CASING AND CEMENTING PROGRAM

SIZE OF HOLE	SIZE OF CASING	WEIGHT PER FOOT	SETTING DEPTH	QUANTITY OF CEMENT
15"	10 3/4"	32#	Approx 150'	100 sx - Circulate
9 7/8"	7"	20#, 23#	Approx 1020'	500 sx - Circulate
6 1/4"	4 1/2" - 5 1/2"	9.5#, 15.5#	Approx 1400'	125 sx - Circulate

Propose to drill San Andres test with 150' of 10 3/4" casing to shut off Surface gravel and caving, 7" casing set 100' below the Artesian Zone; and a tapered 4 1/2" and 5 1/2" production string at TD. Will perforate and stimulate as needed for production.

Mud Program: FW Gel and LCM to 1020', fresh water to TD.

BOP Program: BOP's to be installed on 7" casing and tested for operational.

RECEIVED

RECEIVED

MAY 23 1974

MAY 15 1974

U.S. GEOLOGICAL SURVEY
ARTESIA, NEW MEXICO

O. C. C.

ARTESIA, OFFICE

IN ABOVE SPACE DESCRIBE PROPOSED PROGRAM: If proposal is to deepen or plug back, give data on present productive zone and proposed new productive zone. If proposal is to drill or deepen directionally, give pertinent data on subsurface locations and measured and true vertical depths. Give blowout preventer program, if any.

24.

SIGNED

Edgar M. Lucifora

TITLE

Engineer

DATE

May 14, 1974

(This space for Federal or State office use)

APPROVAL DATE

TITLE

DECLARED WATER BASIN

NOTIFY DATE

SUFFICIENT TIME TO

CEMENT BEHIND THE

Casing Must Be Circulated

*See Instructions

Reverse Side

APPROVED

MAY 28 1974

N. L. BEEKMAN
ACTING DISTRICT ENGINEERTHIS APPROVAL IS RESCINDED IF OPERATIONS
ARE NOT COMMENCED WITHIN 3 MONTHS.

AUG 22 1974

NEW MEXICO OIL CONSERVATION COMMISSION
WELL LOCATION AND ACREAGE DEDICATION PLAT

Form C-102
Supersedes C-128
Effective 1-1-65

All distances must be from the outer boundaries of the Section.

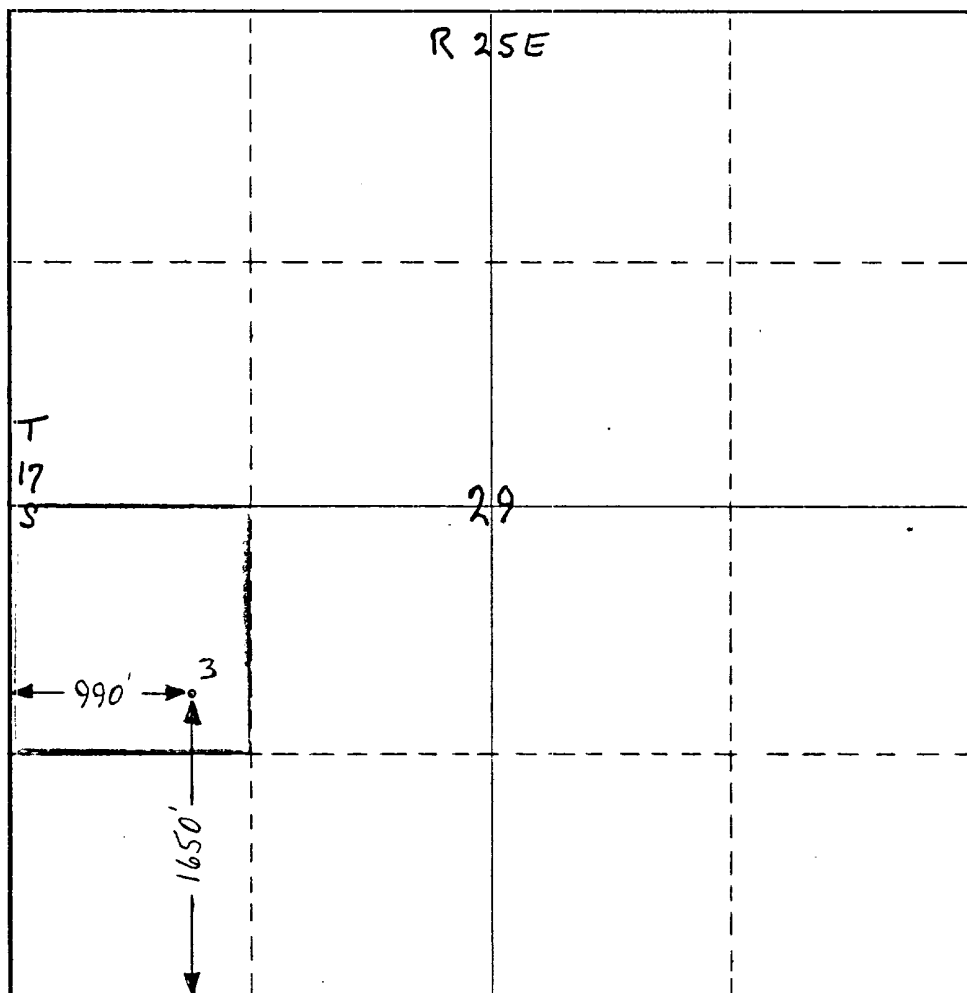
Operator Yates Petroleum Corporation		Lease Federal "CR"		Well No. 3
Unit Letter L	Section 29	Township 17S	Range 25E	County Eddy
Actual Footage Location of Well: 1650 feet from the South line and 990 feet from the West line				
Ground Level Elev. 3613'	Producing Formation San Andres	Pool Eagle Creek S. A.	Dedicated Acreage: 40 Acres	

1. Outline the acreage dedicated to the subject well by colored pencil or hachure marks on the plat below.
2. If more than one lease is dedicated to the well, outline each and identify the ownership thereof (both as to working interest and royalty).
3. If more than one lease of different ownership is dedicated to the well, have the interests of all owners been consolidated by communitization, unitization, force-pooling, etc?

☐ Yes ☐ No If answer is "yes," type of consolidation _____

If answer is "no," list the owners and tract descriptions which have actually been consolidated. (Use reverse side of this form if necessary.) _____

No allowable will be assigned to the well until all interests have been consolidated (by communitization, unitization, forced-pooling, or otherwise) or until a non-standard unit, eliminating such interests, has been approved by the Commission.



CERTIFICATION

I hereby certify that the information contained herein is true and complete to the best of my knowledge and belief.

Eddie M. Mahfood
Name

Eddie M. Mahfood

Position
Engineer

Company
Yates Pet. Corporation

Date
5-14-74

RECEIVED
MAY 15 1974

I hereby certify that the well location shown on this plat was plotted from field notes of actual surveys made by me or under my supervision and that the same is the best of my knowledge and belief.

Date Surveyed
May 11th 1974

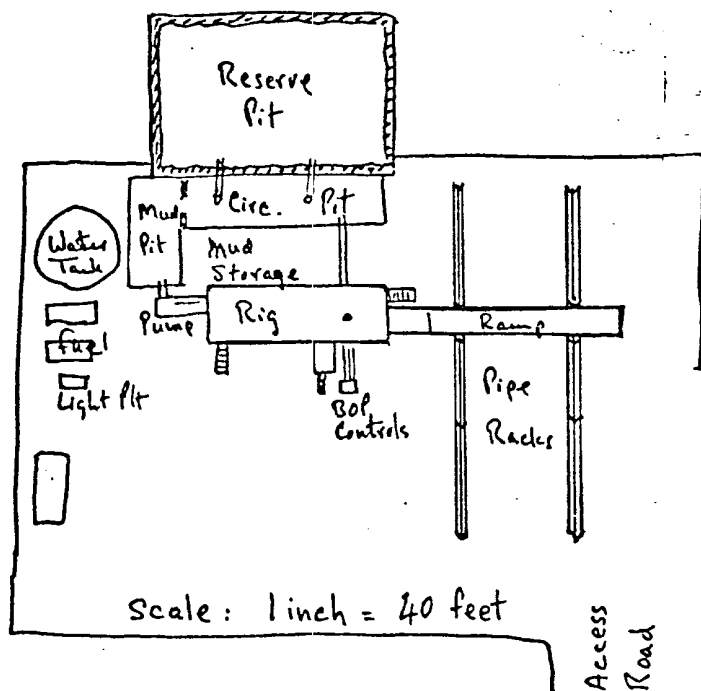
Registered Professional Engineer and/or Land Surveyor

James H. Brown
Certificate No. **542**

Development plan for surface use to accompany, "Applications to Drill Onshore Oil, Gas, or Geothermal Steam Wells on Public Domain and acquired Federal Lands:"

1. Existing roads. See Attached Plat. Roads are caliche and maintained
2. Planned access roads. See Attached Plat. North from existing road.
3. Location of wells. See Attached Plat. Development well in Eagle Creek (SA)
4. Lateral roads to wells locations. See Attached Plat
5. Location of tank batteries and flowlines. See Attached Plat. Flowline alongside access road and existing road to existing Tank Battery
6. Locations and types of water supply. See Attached Plat
7. Methods for handling waste disposal. Buried in reserve pit or placed in garbage container and hauled to approved disposal (City Dump)
8. Location of camps NA
9. Location of airstrips. NA
10. Location layout to include position of the rig, mud tanks, reserve pits, burn pits, pipe racks, etc. See Sketch below
11. Plans for restoration of the surface. Pits to be fenced until dry & leveled. At abandonment, to clean & restore location to near original, marker erected.
12. Any other information which the Approving Official considers essential to his assessment of the impact on the environment. Rolling terrain w/ prairie grass, greasewood, tumbleweed, cactus. Patted surface protected to the satisfaction of rancher-W.E. McIlhaney-746-3034, Box 38, Rt 1
Artesia, NM 88210

The affected Federal and State surface managing agencies shall have access to or, if feasible, may be provided with copies of such development.



RECEIVED

MAY 15 1974

U.S. GEOLOGICAL SURVEY
ARTESIA, NEW MEXICO

A
+

Submitted by:

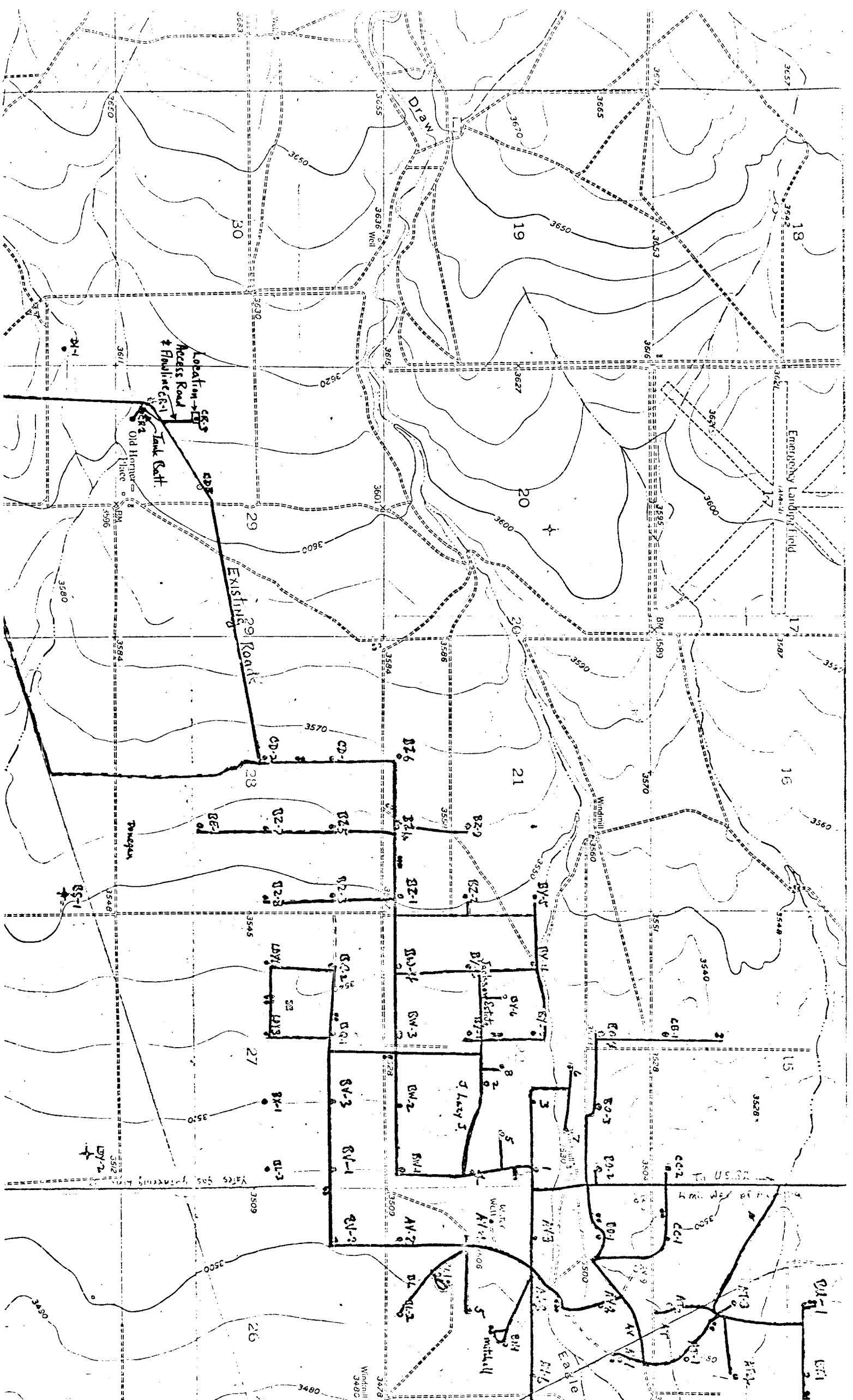
Yates Petroleum Corporation

BY Eddie M. Mahfood
Eddie M. Mahfood - Engineer

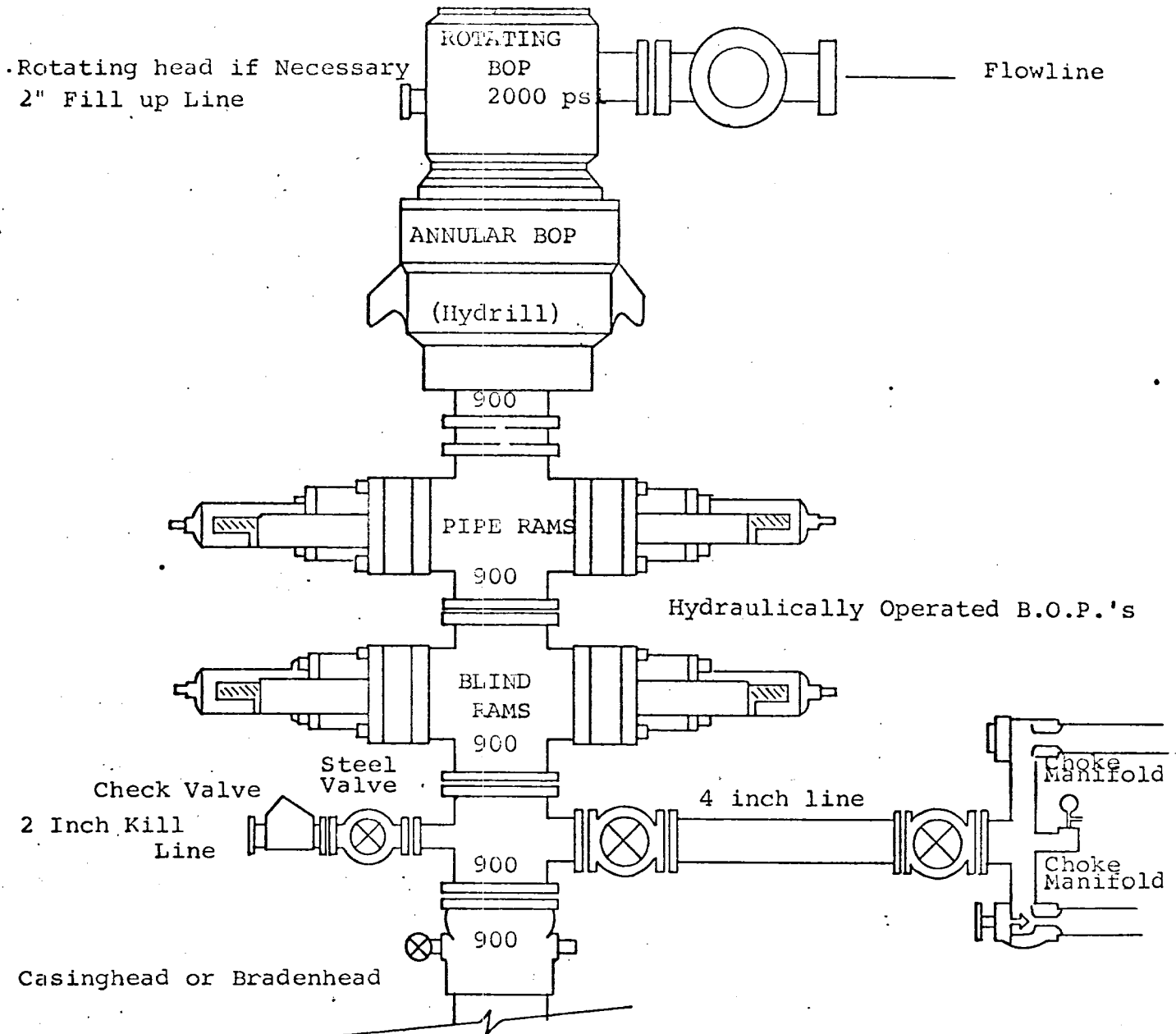
Approved by:

U. S. Geological Survey

BY _____



DIAGRAMMATIC SKETCH OF 3000 PSI BOP ASSEMBLY



THE FOLLOWING CONSTITUTE MINIMUM BLOWOUT PREVENTER REQUIREMENTS

1. All preventers to be hydraulically operated with secondary manual controls installed prior to drilling out from under casing.
2. Choke outlet to be a minimum of 4" diameter.
3. Kill line to be of all steel construction of 2" minimum diameter.
4. All connections from operating manifolds to preventers to be all steel hole or tube a minimum of one inch in diameter.
5. The available closing pressure shall be at least 15% in excess of that required with sufficient volume to operate the B.O.P.'s.
6. All Connections to and from preventer to have a pressure rating equivalent to that of the B.O.P.'s.
7. Inside blowout preventer to be available on rig floor.
8. Operating controls located a safe distance from the rig floor.
9. Hole must be kept filled on trips below intermediate casing. Operator not responsible for blowouts resulting from not keeping hole full.
10. Drill pipe must be installed and used below zone of first gas intrusion.