

UNITED STATES
DEPARTMENT OF THE INTERIOR
GEOLOGICAL SURVEY

APPLICATION FOR PERMIT TO DRILL, DEEPEN, OR PLUG BACK

1a. TYPE OF WORK

DRILL ☒DEEPEN ☐PLUG BACK ☐

b. TYPE OF WELL

OIL
WELL ☒GAS
WELL ☐OTHER ☐SINGLE
ZONE ☒MULTIPLE
ZONE ☐

2. NAME OF OPERATOR

Yates Petroleum Corporation

3. ADDRESS OF OPERATOR

207 South 4th Street - Artesia, NM 88210

4. LOCATION OF WELL (Report location clearly and in accordance with any State requirements.)*

At surface

330' FNL & 330' FWL of Sec. 27-T17S-R26E

At proposed prod. zone

14. DISTANCE IN MILES AND DIRECTION FROM NEAREST TOWN OR POST OFFICE*

5 Miles SW of Artesia, NM

15. DISTANCE FROM PROPOSED*

LOCATION TO NEAREST

PROPERTY OR LEASE LINE, FT.

(Also to nearest drlg. unit line, if any)

330'

16. NO. OF ACRES IN LEASE

80

17. NO. OF ACRES ASSIGNED

40

18. DISTANCE FROM PROPOSED LOCATION*

TO NEAREST WELL, DRILLING, COMPLETED,

OR APPLIED FOR, ON THIS LEASE, FT.

467'

19. PROPOSED DEPTH

Approx. 1500'

20. ROTARY OR CABLE TOOLS

Rotary

21. ELEVATIONS (Show whether DF, RT, GR, etc.)

3546' GR

22. APPROX. DATE WORK WILL START*

As soon as approved

23.

PROPOSED CASING AND CEMENTING PROGRAM

SIZE OF HOLE	SIZE OF CASING	WEIGHT PER FOOT	SETTING DEPTH	QUANTITY OF CEMENT
14-3/4"	10-3/4"	32#	Approx. 200'	125 sx - Circulate
9 1/2"	7"	23#	1130'	450 sx - Circulate
6 1/4"	4 1/2" & 5 1/2"	9.5 & 15.5#	1500'	125 sx - Circulate

Propose to drill a San Andres test with approx. 300' of 10-3/4" surface casing to shut off gravel and cavings and 7" casing will be set 100' below the Artesian zone with cement circulated. A tapered production string will be run to TD and cemented, perforated and Sand-Frac'd for Slaughter production.

Mud Program: - Fresh water gel & LCM to 1130' (or dry drill), water from casing point to Total Depth.

BOP Program: - BOP's will be installed on 7" casing and tested daily.

IN ABOVE SPACE DESCRIBE PROPOSED PROGRAM: If proposal is to deepen or plug back, give data on present production zone and proposed new productive zone. If proposal is to drill or deepen directionally, give pertinent data on subsurface locations and measured and true vertical depths. Give blowout preventer program, if any.

24.

SIGNED

Eddie L. Matlock

TITLE

Engineer

DATE

5-22-74

(This space for Federal or State office use)

PERMIT NO.

APPROVAL DATE

MAY 31 1974

APPROVED BY

CONDITIONS OF APPROVAL, IF ANY:

TITLE

DISTRICT ENGINEER

DATE

DECLARED WATER BASIN
CEMENT BEHIND
CASING MUST BE CIRCULATED.

*See Instructions On Reverse Side

NO. OF DAYS IN SUFFICIENT TIME TO
WITNESS CEMENTING THE CASING.

NEW MEXICO OIL CONSERVATION COMMISSION
WELL LOCATION AND ACREAGE DEDICATION

Form C-102
Supersedes C-128
Effective 1-1-65

All distances must be from the outer boundaries of the Section.

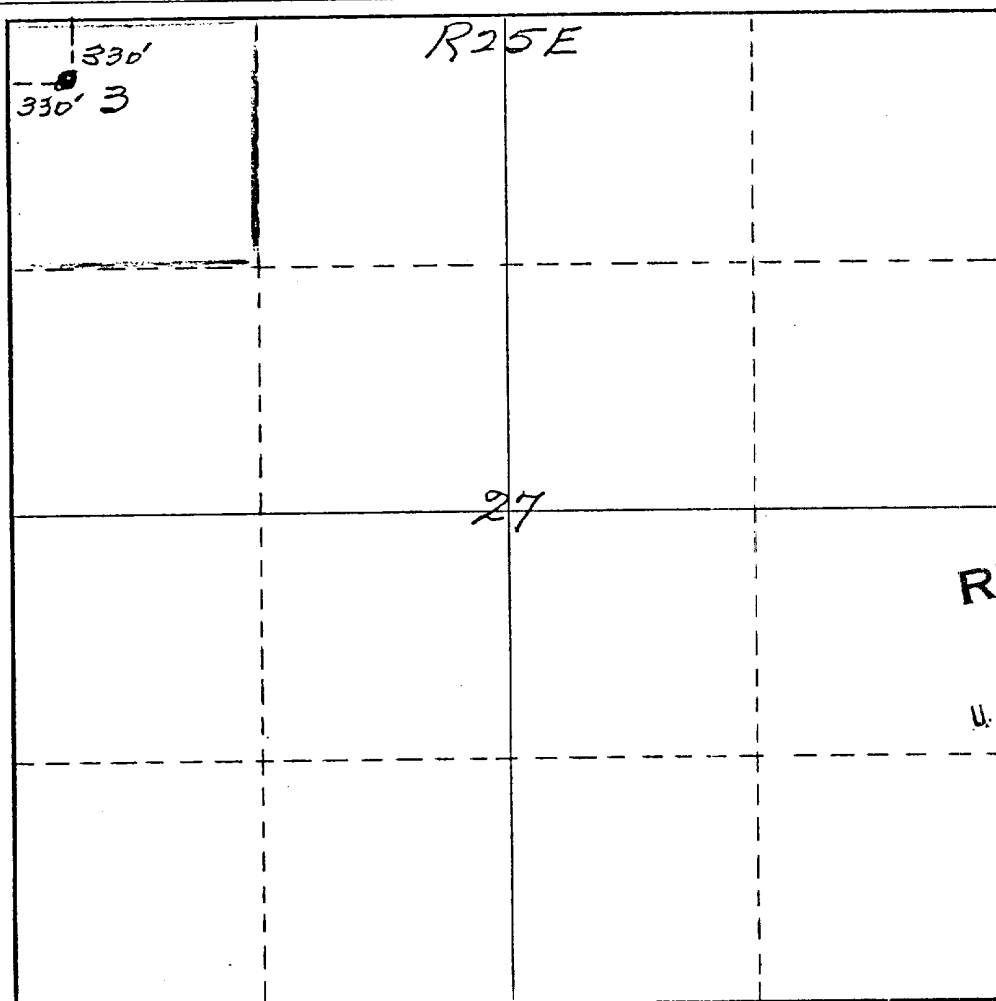
Operator <i>Yates Petroleum Corp</i>			Lease <i>Federal BQ</i>		Well No. <i>3</i>
Unit Letter <i>D</i>	Section <i>27</i>	Township <i>17 South</i>	Range <i>25 East</i>	County <i>Eddy</i>	
Actual Footage Location of Well: <i>330</i> feet from the <i>North</i> line and <i>330</i> feet from the <i>West</i> line					
Ground Level Elev. <i>3546</i>	Producing Formation <i>San Andres</i>		Pool <i>Eagle Creek S.A.</i>	Dedicated Acreage: <i>40</i> Acres	

- Outline the acreage dedicated to the subject well by colored pencil or hachure marks on the plat below.
- If more than one lease is dedicated to the well, outline each and identify the ownership thereof (both as to working interest and royalty).
- If more than one lease of different ownership is dedicated to the well, have the interests of all owners been consolidated by communitization, unitization, force-pooling, etc?

☐ Yes ☐ No If answer is "yes," type of consolidation _____

If answer is "no," list the owners and tract descriptions which have actually been consolidated. (Use reverse side of this form if necessary.) _____

No allowable will be assigned to the well until all interests have been consolidated (by communitization, unitization, forced-pooling, or otherwise) or until a non-standard unit, eliminating such interests, has been approved by the Commission.



CERTIFICATION

I hereby certify that the information contained herein is true and complete to the best of my knowledge and belief.

Eddie M. Mahfood

Name
Eddie M. Mahfood

Position
Engineer

Company
Yates Pet. Corp.

Date
5-22-74

RECEIVED
MAY 22 1974
U.S. GEOLOGICAL SURVEY
ARTESIA, NEW MEXICO
JAMES H. BROWN

Date Surveyed
May 21st 1974

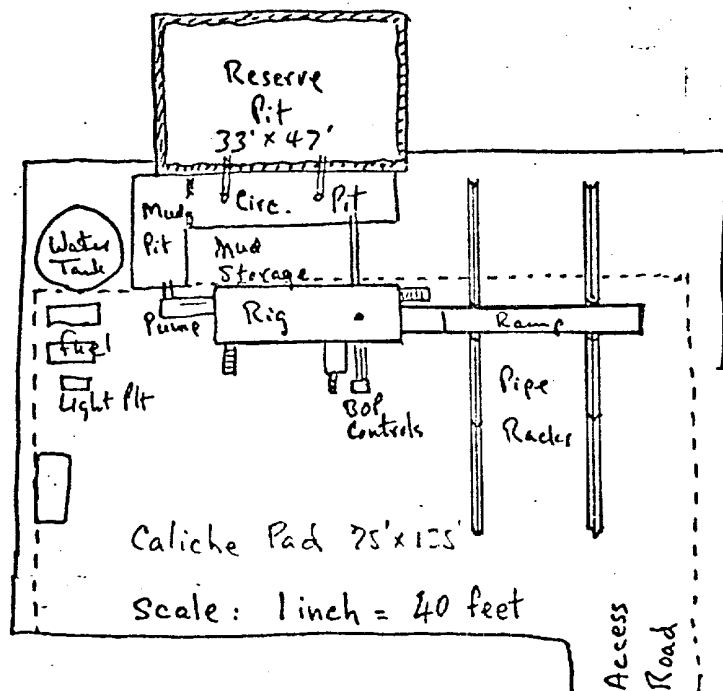
Registered Professional Engineer
and/or Land Surveyor

James H. Brown
Certificate No. *542*

Development plan for surface use to accompany, "Applications to Drill Onshore Oil, Gas, or Geothermal Steam Wells on Public Domain and acquired Federal Lands:"

1. Existing roads. See attached Topo Map - County maintained road and Company maintained Lease roads.
2. Planned access roads. See attached Topo Map - To blade road east from existing and gravel surface where caliche outcrop is absent.
3. Location of wells. See attached Topo Map - In-fill well in Eagle Creek San Andres Field
4. Lateral roads to wells locations. See attached Topo Map - This location very near county road, no lateral road needed.
5. Location of tank batteries and flowlines. See attached Topo Map-Existing Tank Battery in same 40-acre spacing.
6. Locations and types of water supply. Fresh water piped from Service Well across fee surface.
7. Methods for handling waste disposal. Engine oil and mud in circulating pit, trash in trash barrel for subsequent approval disposal(city dump)
8. Location of camps N.A.
9. Location of airstrips. N.A.
10. Location layout to include position of the rig, mud tanks, reserve pits, burn pits, pipe racks, etc. See Sketch.
11. Plans for restoration of the surface. Mud pits will be dried and leveled or fenced, surface restored near original upon abandonment.
12. Any other information which the Approving Official considers essential to his assessment of the impact on the environment. Rolling grassland, fee surface; environment protected to satisfaction of rancher - J.W. Gissler. P. O. Box 987 - Artesia, IN 88210 - 505-746-9544

The affected Federal and State surface managing agencies shall have access to or, if feasible, may be provided with copies of such development.



RECEIVED

U. S. GEOLOGICAL SURVEY
ARTESIA, NEW MEXICO

N
↑

Submitted by:

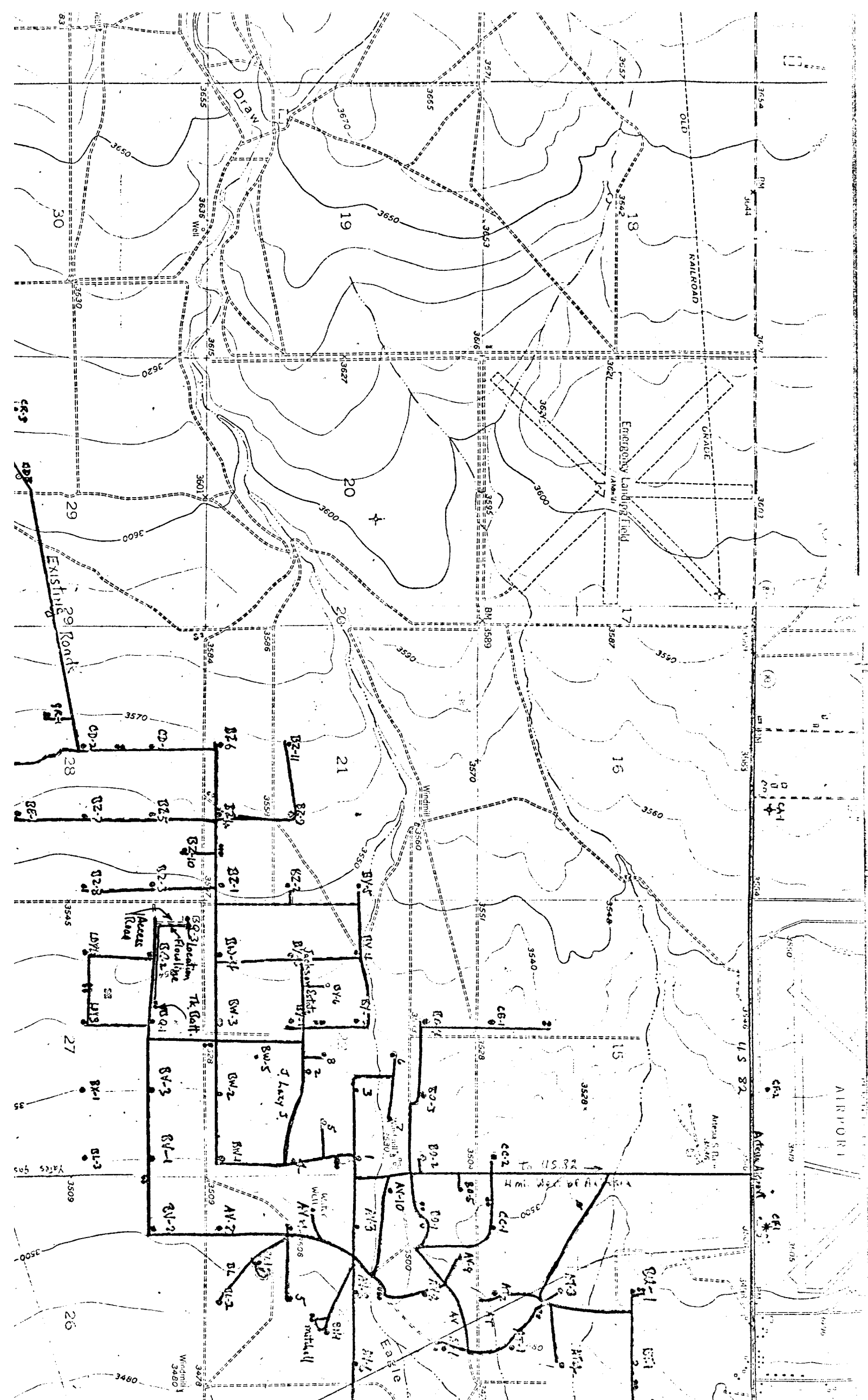
Yates Petroleum Corporation

BY Eddie M. Mahfood
Eddie M. Mahfood - Engineer

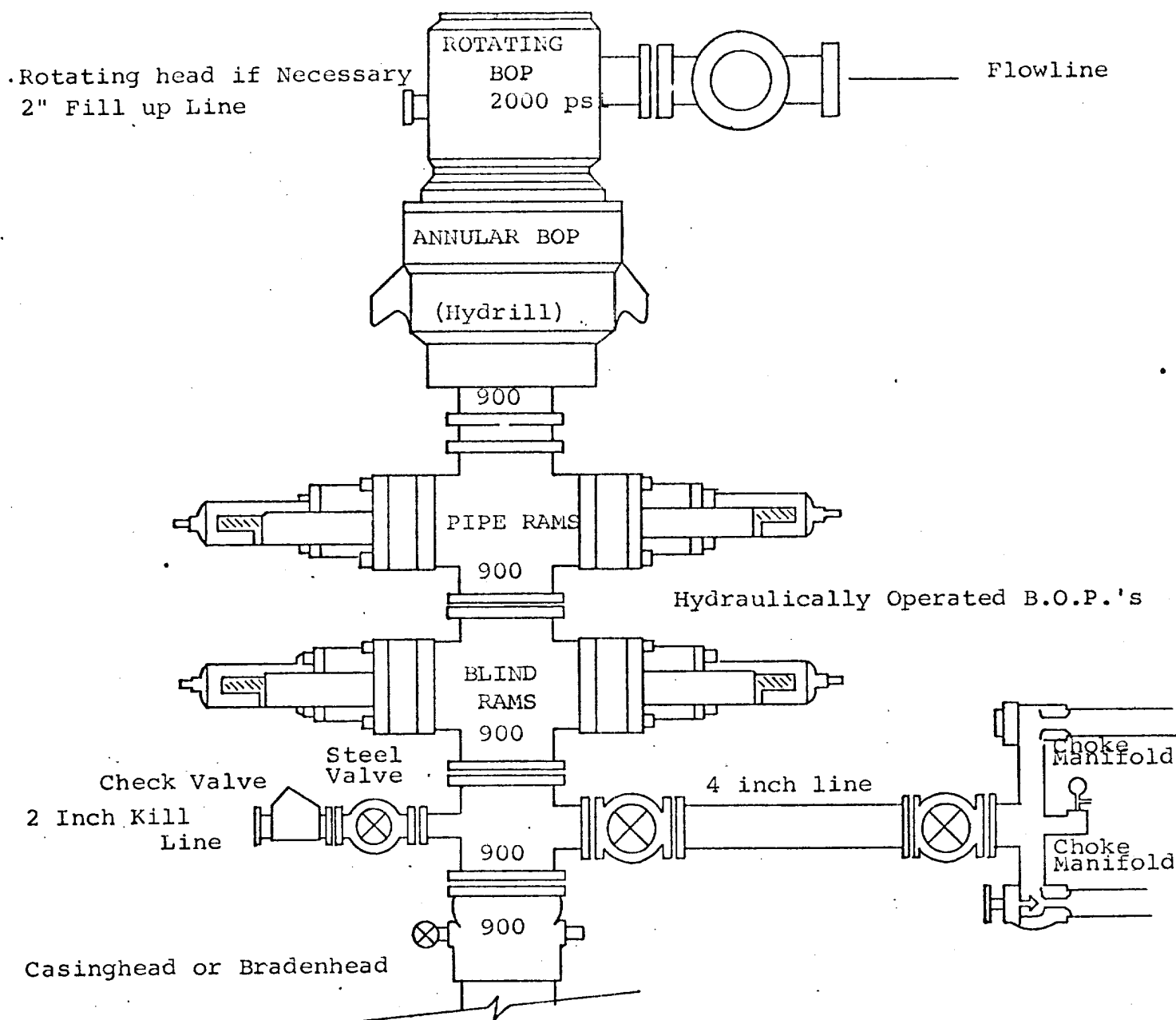
Approved by:

U. S. Geological Survey

BY _____



DIAGRAMMATIC SKETCH OF 3000 PSI BOP ASSEMBLY



THE FOLLOWING CONSTITUTE MINIMUM BLOWOUT PREVENTER REQUIREMENTS

1. All preventers to be hydraulically operated with secondary manual controls installed prior to drilling out from under casing.
2. Choke outlet to be a minimum of 4" diameter.
3. Kill line to be of all steel construction of 2" minimum diameter.
4. All connections from operating manifolds to preventers to be all steel hole or tube a minimum of one inch in diameter.
5. The available closing pressure shall be at least 15% in excess of that required with sufficient volume to operate the B.O.P.'s.
6. All Connections to and from preventer to have a pressure rating equivalent to that of the B.O.P.'s.
7. Inside blowout preventer to be available on rig floor.
8. Operating controls located a safe distance from the rig floor.
9. Hole must be kept filled on trips below intermediate casing. Operator not responsible for blowouts resulting from not keeping hole full.
10. Drill pipe must be installed and used below zone of first gas intrusion.