

NO. OF COPIES RECEIVED	5
DISTRIBUTION	
SANTA FE	1
FILE	1
U.S.G.S.	2
LAND OFFICE	
OPERATOR	1

RECEIVED
NEW MEXICO OIL CONSERVATION COMMISSION

JUL 22 1974

O. C. C.
ARTESIA, OFFICE

30-015-21293

Form C-101
Revised 1-1-65

5A. Indicate Type of Lease STATE <input type="checkbox"/> FEE <input checked="" type="checkbox"/>
5. State Oil & Gas Lease No.
7. Unit Agreement Name
8. Farm or Lease Name Achen-Prey "DM"
9. Well No. 4
10. Field and Pool, or Wildcat Cagle Creek S.A.
12. County Brewer
19. Proposed Depth approx. 1500
19A. Formation San Andres
20. Rotary or C.T. Rotary
21. Elevations (Show whether DF, RT, etc.) 3456 GR
21A. Kind & Status Plug. Bond Blanket
21B. Drilling Contractor Unknown
22. Approx. Date Work will start as soon as approved

APPLICATION FOR PERMIT TO DRILL, DEEPEN, OR PLUG BACK

1a. Type of Work DRILL <input checked="" type="checkbox"/> DEEPEN <input type="checkbox"/> PLUG BACK <input type="checkbox"/>
b. Type of Well OIL WELL <input checked="" type="checkbox"/> GAS WELL <input type="checkbox"/> OTHER <input type="checkbox"/>
2. Name of Operator Yates Petroleum Corporation
3. Address of Operator 207 South 4th Street-Artesia, NM 88210
4. Location of Well UNIT LETTER <u>K</u> LOCATED <u>2310</u> FEET FROM THE <u>South</u> LINE AND <u>1650</u> FEET FROM THE <u>West</u> LINE OF SEC. <u>13</u> TWP. <u>17S</u> RGE. <u>25E</u> NMPM
19. Proposed Depth approx. 1500
19A. Formation San Andres
20. Rotary or C.T. Rotary
21. Elevations (Show whether DF, RT, etc.) 3456 GR
21A. Kind & Status Plug. Bond Blanket
21B. Drilling Contractor Unknown
22. Approx. Date Work will start as soon as approved

23.

PROPOSED CASING AND CEMENT PROGRAM

SIZE OF HOLE	SIZE OF CASING	WEIGHT PER FOOT	SETTING DEPTH	SACKS OF CEMENT	EST. TOP
14 1/2"	10-3/4"	30#	approx. 320'	Circulate	
9 1/2"	7"	23#	" 1200	Circulate	
6 1/4"	5 1/2 & 4 1/2"	15.5 & 9.5#	" 1500	125 sx	

It is our intention to drill a San Andres test with approx. 320' of surface casing set to shut off gravel and cavings. Intermediate casing will be set 100' below the Artesian zone and if productive 5 1/2" & 4 1/2" production casing will be run, perforated and stimulated for production.

APPROVAL VALID
FOR 90 DAYS UNLESS
DRILLING COMMENCED,
EXPIRES 10-23-74

IN ABOVE SPACE DESCRIBE PROPOSED PROGRAM: IF PROPOSAL IS TO DEEPEN OR PLUG BACK, GIVE DATA ON PRESENT PRODUCTIVE ZONE AND PROPOSED NEW PRODUCTIVE ZONE. GIVE BLOWOUT PREVENTER PROGRAM, IF ANY.

I hereby certify that the information above is true and complete to the best of my knowledge and belief.

Signed Derald W. Book Title Geologist Date 7-19-74

(This space for State Use)

APPROVED BY W. A. Gressett TITLE OIL AND GAS INSPECTOR DATE JUL 23 1974

CONDITIONS OF APPROVAL, IF ANY:

*Adequate Blowout
Preventers be used.*

Cement must be circulated to
surface behind 10 3/4" + 7" casing

Notify N.M.O.C.C. in sufficient
time to witness cementing

the 7" casing

MEXICO OIL CONSERVATION COMMISSION
WELL LOCATION AND ACREAGE DEDICATION PLAT

Form O.C.C. 1
Supersedes O.C.C. 1
Effective 1-1-65

All distances must be from the outer boundaries of the Section.

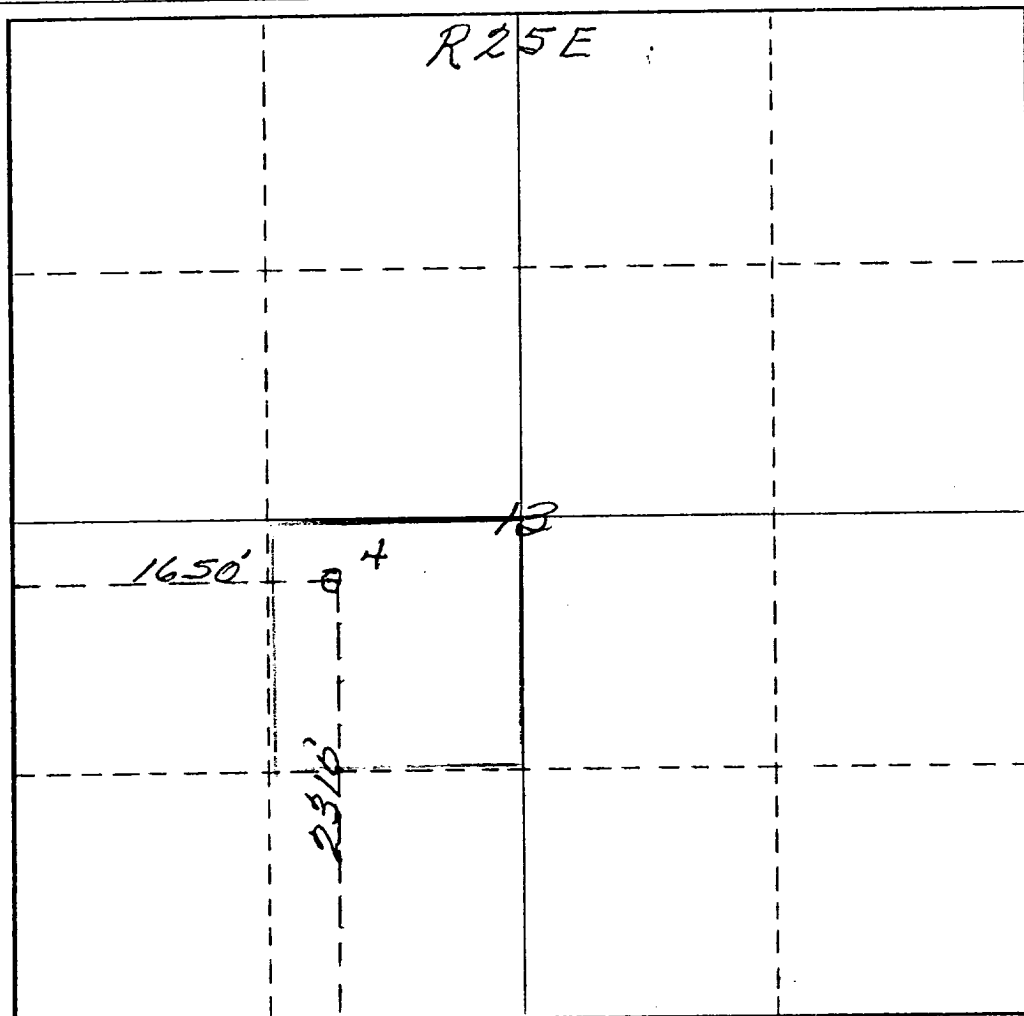
Operator Yates Petroleum Corp.			Lease Athen-Fry "DM"		Well No. 4
Map Letter K	Section 13	Township 17 South	Range 25 East	County Eddy	
Actual Footage Location of Well: 2310 feet from the South line and 1650 feet from the East line					
Ground Level Elev. 3456	Producing Formation San Andres		Pool Eagle Creek (S.A.)	Dedicated Acreage: 40 Acres	

1. Outline the acreage dedicated to the subject well by colored pencil or hachure marks on the plat below.
2. If more than one lease is dedicated to the well, outline each and identify the ownership thereof (both as to working interest and royalty).
3. If more than one lease of different ownership is dedicated to the well, have the interests of all owners been consolidated by communitization, unitization, force-pooling, etc?

☐ Yes ☐ No If answer is "yes," type of consolidation _____

If answer is "no," list the owners and tract descriptions which have actually been consolidated. (Use reverse side of this form if necessary.) _____

No allowable will be assigned to the well until all interests have been consolidated (by communitization, unitization, forced-pooling, or otherwise) or until a non-standard unit, eliminating such interests, has been approved by the Commission.



CERTIFICATION

I hereby certify that the information contained herein is true and complete to the best of my knowledge and belief.

Eddie M. Mahfood

Name

Eddie M. Mahfood

Position

Engineer

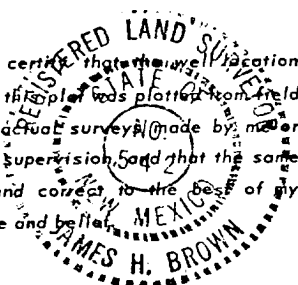
Company

Yates Pet. Corporation

Date

7-19-74

I hereby certify that the well location shown on this plat was plotted from field notes of actual surveys made by me or under my supervision, and that the same is true and correct to the best of my knowledge and belief.



Date Surveyed

July 4th 1974

Registered Professional Engineer
and/or Land Surveyor

James H. Brown

Certificate No.

542

