

NO. OF COPIES RECEIVED	5
DISTRIBUTION	
SANTA FE	1
FILE	1
U.S.G.S.	2
LAND OFFICE	
OPERATOR	1

NEW MEXICO OIL CONSERVATION COMMISSION

JUL 24 1974

O. C. C.
ARTESIA, OFFICE

30-015-21295

Form C-101
Revised 1-1-65

5A. Indicate Type of Lease	
STATE <input type="checkbox"/>	FEE <input checked="" type="checkbox"/>
5. State Oil & Gas Lease No.	
7. Unit Agreement Name	
8. Farm or Lease Name	
J. L. J.	
9. Well No.	
9	
10. Field and Pool, or Wildcat	
Buck Creek S.S.	
12. County	
Brewer	
19. Proposed Depth	19A. Formation
Approx. 1500'	San Andres
20. Rotary or C.T.	
Rotary	
21. Elevations (Show whether DF, RT, etc.)	22. Approx. Date Work will start
3530'	As soon as approved

APPLICATION FOR PERMIT TO DRILL, DEEPEN, OR PLUG BACK

1a. Type of Work	
b. Type of Well	
DRILL <input checked="" type="checkbox"/>	DEEPEN <input type="checkbox"/>
OIL WELL <input type="checkbox"/>	GAS WELL <input type="checkbox"/>
OTHER <input type="checkbox"/>	
2. Name of Operator	
Yates Petroleum Corporation	
3. Address of Operator	
207 South 4th Street - Artesia, NM 88210	
4. Location of Well	
UNIT LETTER G	LOCATED 1650 FEET FROM THE North LINE
AND 1650 FEET FROM THE East	LINE OF SEC. 22 TWP. 17S RGE. 25W NMPM

19. Proposed Depth		19A. Formation		20. Rotary or C.T.	
Approx. 1500'		San Andres		Rotary	
21. Elevations (Show whether DF, RT, etc.)		21A. Kind & Status Plug. Bond		21B. Drilling Contractor	
3530'		Blanket		Cactus Drilling Co.	
22. Approx. Date Work will start		As soon as approved			

23.

PROPOSED CASING AND CEMENT PROGRAM

SIZE OF HOLE	SIZE OF CASING	WEIGHT PER FOOT	SETTING DEPTH	SACKS OF CEMENT	EST. TOP
14 3/4"	10-3/4"	32#	Approx. 300'	175	Circulate
9-7/8"	7"	23#	" 1150'	400	Circulate
6-1/4"	4 1/2") Tapered	9.5#)	1500')	125	
	5 1/2")	15.5#))		

Propose to drill a San Andres test. Approx. 300' of 10-3/4" casing will be run and cemented to surface to shut off surface gravel and cavings, and 7" casing will be run 100' below the Artesian zone, cemented to surface. A tapered production string will be run and cemented, perforated and Sand Frac for completion.

Mud Program: - Fresh water mud W/ LCM from surface to 1150', fresh water to Total Depth.

BOP Program: - BOP's to be installed on 7" casing and tested.

APPROVAL VALID
FOR 90 DAYS UNLESS
DRILLING COMMENCED,

EXPIRES 10-25-74

IN ABOVE SPACE DESCRIBE PROPOSED PROGRAM: IF PROPOSAL IS TO DEEPEN OR PLUG BACK, GIVE DATA ON PRESENT PRODUCTIVE ZONE AND PROPOSED NEW PRODUCTIVE ZONE. GIVE BLOWOUT PREVENTER PROGRAM, IF ANY.

I hereby certify that the information above is true and complete to the best of my knowledge and belief.

Signed Donald W. Brook Title Geologist Date 7-23-74

(This space for State Use)

APPROVED BY W. A. Gussert TITLE OIL AND GAS INSPECTOR DATE JUL 25 1974

CONDITIONS OF APPROVAL, IF ANY:

Cement must be circulated to
surface behind 10 7/8" + 7" casing

Notify N.M.O.C.C. in sufficient
time to witness cementing
the 7" casing

NEW MEXICO OIL CONSERVATION COMMISSION
WELL LOCATION AND ACREAGE DEDICATION, LAT

Form C-102
Supersedes C-128
Effective 1-1-65

All distances must be from the outer boundaries of the Section.

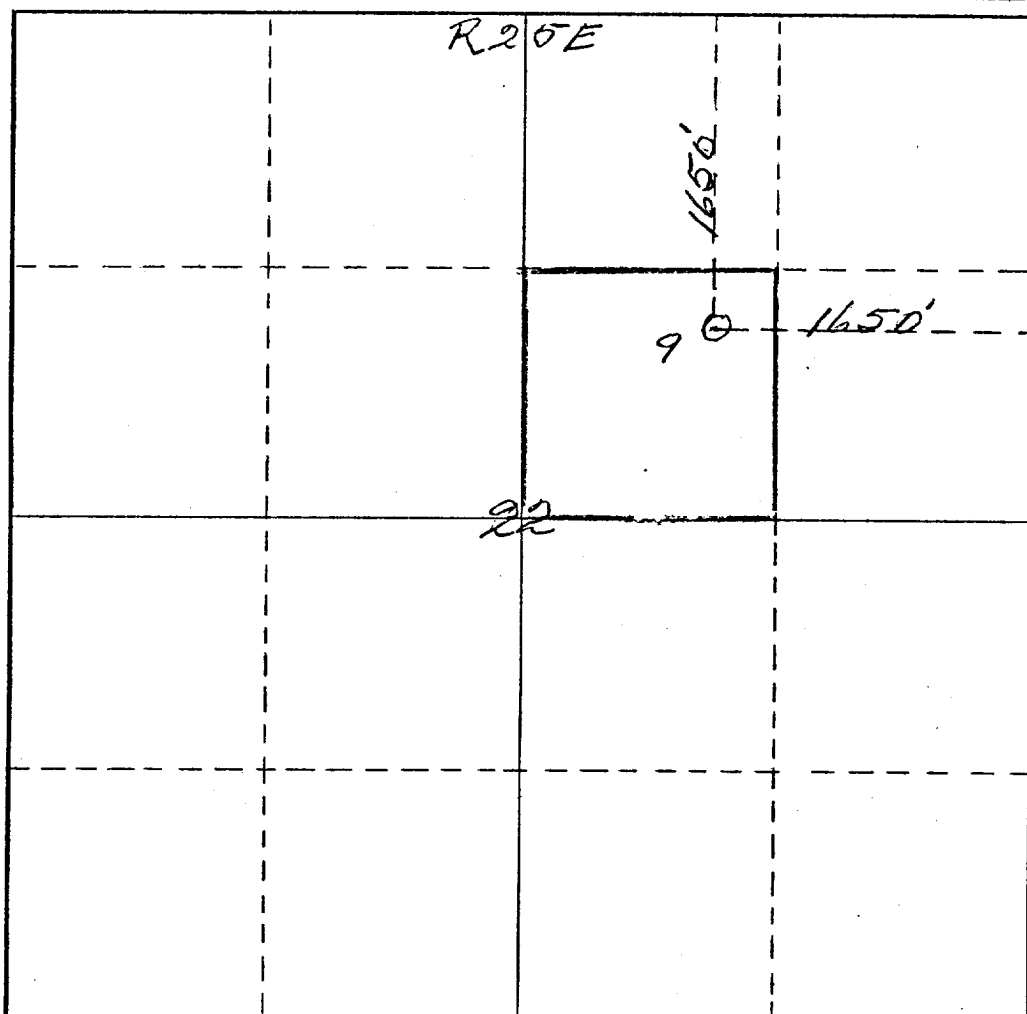
Operator <i>Yates Petroleum Corp.</i>		Lease <i>Thazy J</i>		Well No. <i>9</i>	
Unit Letter <i>G</i>	Section <i>22</i>	Township <i>17 South</i>	Range <i>25 East</i>	County <i>Eddy</i>	
Actual Footage Location of Well: <i>1650'</i> feet from the <i>North</i> line and <i>1650'</i> feet from the <i>East</i> line					
Ground Level Elev. <i>3530</i>	Producing Formation <i>San Andres</i>		Pool <i>Eagle Creek San Andres</i>		Dedicated Acreage: <i>40</i> Acres

1. Outline the acreage dedicated to the subject well by colored pencil or hachure marks on the plat below.
2. If more than one lease is dedicated to the well, outline each and identify the ownership thereof (both as to working interest and royalty).
3. If more than one lease of different ownership is dedicated to the well, have the interests of all owners been consolidated by communitization, unitization, force-pooling, etc?

☐ Yes ☐ No If answer is "yes," type of consolidation _____

If answer is "no," list the owners and tract descriptions which have actually been consolidated. (Use reverse side of this form if necessary.) _____

No allowable will be assigned to the well until all interests have been consolidated (by communitization, unitization, forced-pooling, or otherwise) or until a non-standard unit, eliminating such interests, has been approved by the Commission.



CERTIFICATION

I hereby certify that the information contained herein is true and complete to the best of my knowledge and belief.

Eddie M. Mahford

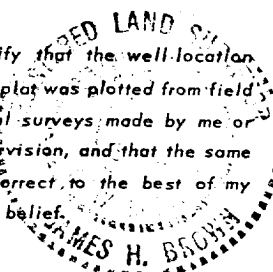
Name
Eddie M. Mahford

Position
Engineer

Company
Yates Pet. Corporation

Date
7-23-74

I hereby certify that the well location shown on this plat was plotted from field notes of actual surveys made by me or under my supervision, and that the same is true and correct to the best of my knowledge and belief.



Date Surveyed
June 22nd 1974

Registered Professional Engineer
and/or Land Surveyor

James H. Brown
Certificate No. *542*

0 330 660 990 1320 1650 1980 2310 2640 2000 1500 1000 500 0