

NO. OF COPIES RECEIVED	5
DISTRIBUTION	
SANTA FE	1
FILE	1
U.S.G.S.	2
LAND OFFICE	
OPERATOR	1

RECEIVED
NEW MEXICO OIL CONSERVATION COMMISSION

JUL 25 1974

O. C. C.
ARTESIA, OFFICE

30-015-21303

Form C-101
Revised 14-65

5A. Indicate Type of Lease	
STATE <input type="checkbox"/>	FEE <input checked="" type="checkbox"/>
5. State Oil & Gas Lease No.	

APPLICATION FOR PERMIT TO DRILL, DEEPEN, OR PLUG BACK

1a. Type of Work		7. Unit Agreement Name	
b. Type of Well OIL WELL <input checked="" type="checkbox"/> GAS WELL <input type="checkbox"/> OTHER <input type="checkbox"/>		8. Farm or Lease Name J Lazy J	
2. Name of Operator Yates Petroleum Corporation ✓		9. Well No. 10	
3. Address of Operator 207 South 4th Street - Artesia, NM 88210		10. Field and Pool, or Wildcat Eagle Creek S.A.	
4. Location of Well UNIT LETTER H LOCATED 1750 FEET FROM THE North LINE AND 430 FEET FROM THE East LINE OF SEC. 22 TWP. 17S RGE. 25E NMPM		12. County Eddy	
19. Proposed Depth Approx. 1500'		19A. Formation San Andres	
20. Rotary or C.T. Rotary		21. Elevations (Show whether DE, RT, etc.) 3529' GR	
21A. Kind & Status Plug. Bond Blanket		21B. Drilling Contractor Cactus Drilling Co.	
22. Approx. Date Work will start As soon as approved			

23.

PROPOSED CASING AND CEMENT PROGRAM

SIZE OF HOLE	SIZE OF CASING	WEIGHT PER FOOT	SETTING DEPTH	SACKS OF CEMENT	EST. TOP
14-3/4"	10-3/4"	32#	Approx 300'	175	Circulate
9-7/8"	7"	23, 26#	" 1160'	400	Circulate
6 1/4"	5 1/2 & 4 1/2"	9.5 & 15.5#	" 1500'	125	

Propose to drill a San Andres test. Approximately 300' of 10-3/4" casing will be run and cemented to the surface to shut off surface gravel and cavings, and 7" casing will be run 100' below the Artesian Zone and cemented to surface. If production is encountered a tapered oil string will be run and cemented, perforated and sand frac'd for production.

Mud Program: - Fresh water mud w/LCM from surface to 1160', fresh water to Total Depth.

BOP Program: - BOP's to be installed on 7" casing and tested daily

**APPROVAL VALID
FOR 90 DAYS UNLESS
DRILLING COMMENCED,**

EXPIRES 10-26-74

IN ABOVE SPACE DESCRIBE PROPOSED PROGRAM: IF PROPOSAL IS TO DEEPEN OR PLUG BACK, GIVE DATA ON PRESENT PRODUCTIVE ZONE AND PROPOSED NEW PRODUCTIVE ZONE. GIVE BLOWOUT PREVENTER PROGRAM, IF ANY.

I hereby certify that the information above is true and complete to the best of my knowledge and belief.

Signed W. A. Gressett Title Geologist Date 7-24-74

(This space for State Use)

APPROVED BY W. A. Gressett TITLE OIL AND GAS INSPECTOR DATE JUL 26 1974
CONDITIONS OF APPROVAL, IF ANY:

Cement must be circulated to
surface behind 10 3/4" & 7" casing
the 7" casing

NE EXICO OIL CONSERVATION COMMISSIC
WELL LOCATION AND ACREAGE DEDICATION PLAT

Form C-102
Supersedes C-128
Effective 1-1-65

All distances must be from the outer boundaries of the Section.

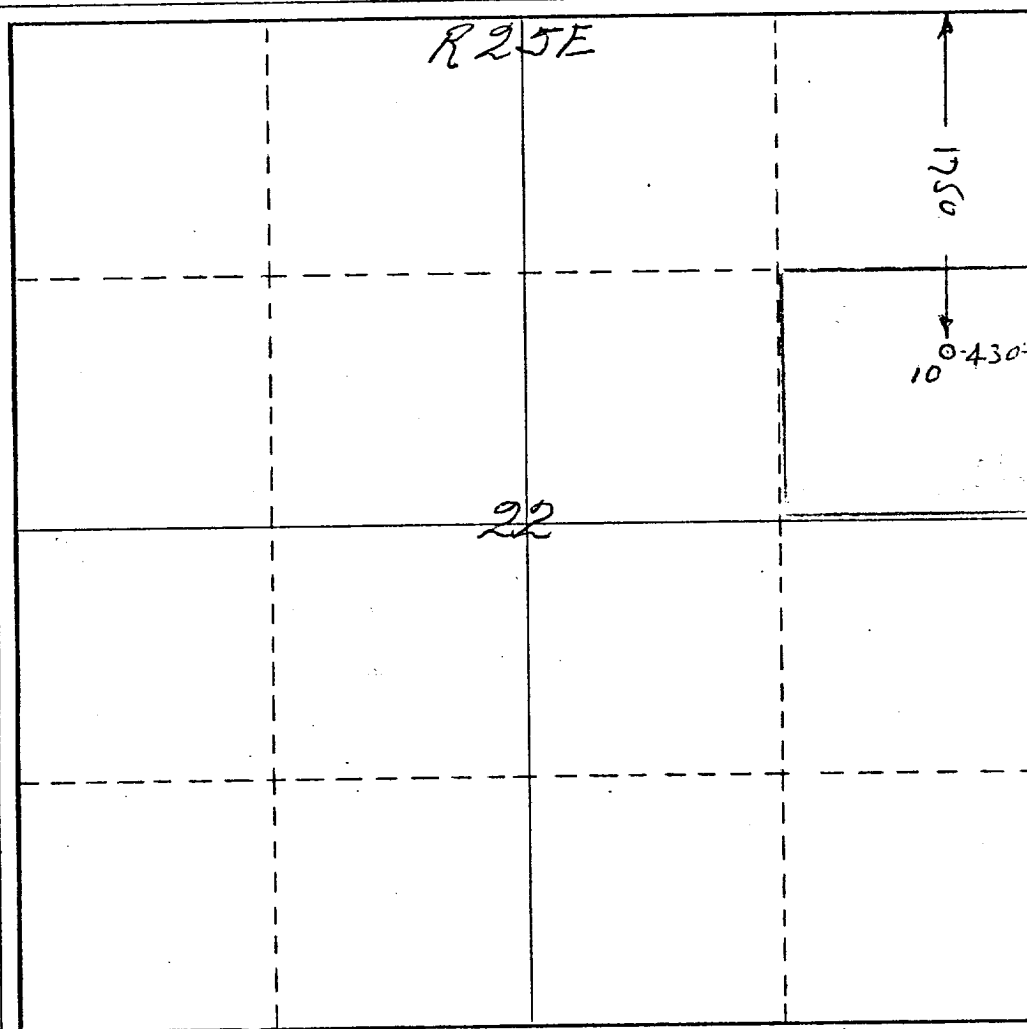
Operator <i>Yates Petroleum Corp.</i>			Lease <i>J Lazy T</i>		Well No. <i>10</i>
Unit Letter <i>H</i>	Section <i>22</i>	Township <i>17 South</i>	Range <i>25 East</i>	County <i>Eddy</i>	
Actual Footage Location of Well: <i>1750</i> feet from the <i>North</i> line and <i>430</i> feet from the <i>East</i> line					
Ground Level Elev. <i>3529</i>	Producing Formation <i>San Andres</i>		Pool <i>Eagle Creek (SA)</i>	Dedicated Acreage: <i>40</i> Acres	

1. Outline the acreage dedicated to the subject well by colored pencil or hachure marks on the plat below.
2. If more than one lease is dedicated to the well, outline each and identify the ownership thereof (both as to working interest and royalty).
3. If more than one lease of different ownership is dedicated to the well, have the interests of all owners been consolidated by communitization, unitization, force-pooling, etc?

☐ Yes ☐ No If answer is "yes," type of consolidation _____

If answer is "no," list the owners and tract descriptions which have actually been consolidated. (Use reverse side of this form if necessary.) _____

No allowable will be assigned to the well until all interests have been consolidated (by communitization, unitization, forced-pooling, or otherwise) or until a non-standard unit, eliminating such interests, has been approved by the Commission.



CERTIFICATION

I hereby certify that the information contained herein is true and complete to the best of my knowledge and belief.

Eddie M. Mahfood

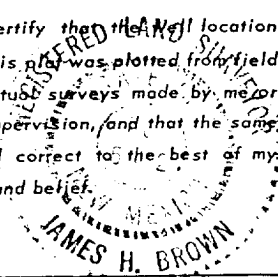
Name
Eddie M. Mahfood

Position
Engineer

Company
Yates Pet. Corporation

Date
7-23-74

I hereby certify that the well location shown on this plat was plotted from field notes of actual surveys made by me or under my supervision, and that the same is true and correct to the best of my knowledge and belief.



Date Surveyed
June 22nd 1974

Registered Professional Engineer
and/or Land Surveyor

James H. Brown
Certificate No. *542*

T
17
S