

NO. OF COPIES RECEIVED	5
DISTRIBUTION	
SANTA FE	1
FILE	1 ✓
U.S.G.S.	2
LAND OFFICE	
OPERATOR	1

NEW MEXICO OIL CONSERVATION COMMISSION

RECEIVED

Form C-101
Revised 1-1-65

AUG 8 1974

O. C. C.

ARTESIA OFFICE

APPLICATION FOR PERMIT TO DRILL, DEEPEN, OR PLUG BACK

1a. Type of Work DRILL <input checked="" type="checkbox"/> DEEPEN <input type="checkbox"/> PLUG BACK <input type="checkbox"/>		7. Unit Agreement Name
b. Type of Well OIL WELL <input checked="" type="checkbox"/> GAS WELL <input type="checkbox"/> OTHER <input type="checkbox"/> SINGLE ZONE <input type="checkbox"/> MULTIPLE ZONE <input type="checkbox"/>		8. Farm or Lease Name Jackson "AT"
2. Name of Operator Yates Petroleum Corporation ✓		9. Well No. 6
3. Address of Operator 207 South 4th Street, Artesia, New Mexico 88210		10. Field and Pool, or Wildcat Eagle Creek San Andres
4. Location of Well UNIT LETTER O LOCATED 940 FEET FROM THE South LINE AND 2310 FEET FROM THE East LINE OF SEC. 14 TWP. 17S RGE. 25E NMPM		12. County Eddy
19. Proposed Depth Approx 1500'		19A. Formation San Andres
20. Rotary or C.T. Rotary		
21. Elevations (Show whether DF, RT, etc.) 3482'	21A. Kind & Status Plug. Bond Blanket	21B. Drilling Contractor Cactus Drilling Co.
22. Approx. Date Work will start As soon as approved		

PROPOSED CASING AND CEMENT PROGRAM

SIZE OF HOLE	SIZE OF CASING	WEIGHT PER FOOT	SETTING DEPTH	SACKS OF CEMENT	EST. TOP
14 3/4"	10-3/4"	32#	Approx 300'	175	Circulate
9 1/2"	7"	23#	" 1180'	450	Circulate
6 1/2"	5 1/2 & 4 1/2"	9.5 & 15.5#	" 1500'	125	Circulate

Propose to drill a San Andres test with approximately 300' of surface casing to shut off gravel and caving, intermediate casing will be set 100' below the Artesian Zone and if productive a tapered oil string will be run, perforate and stimulate as needed for production.

Mud Program: FW Gel and LCM to 1180' or dry drill, FW to TD.

BOP Program: BOP's will be installed on intermediate casing and will be tested for operational.

APPROVAL VALID
FOR 90 DAYS UNLESS
DRILLING COMMENCED,

EXPIRES 11-9-74

IN ABOVE SPACE DESCRIBE PROPOSED PROGRAM: IF PROPOSAL IS TO DEEPEN OR PLUG BACK, GIVE DATA ON PRESENT PRODUCTIVE ZONE AND PROPOSED NEW PRODUCTIVE ZONE. GIVE BLOWOUT PREVENTER PROGRAM, IF ANY.

I hereby certify that the information above is true and complete to the best of my knowledge and belief.

Signed Eddie M. Brady Title Engineer Date 8-6-74

(This space for State Use)

APPROVED BY W. A. Gressett TITLE OIL AND GAS INSPECTOR DATE AUG 9 1974

CONDITIONS OF APPROVAL, IF ANY:

Cement must be circulated to
surface behind 10 3/4" & 7" casing

Notify N.M.O.C.C. in sufficient
time to witness cementing
the 7" casing

**NEW MEXICO OIL CONSERVATION COMMISSION
WELL LOCATION AND ACREAGE DEDICATION PLAT**

Form C-102
Supersedes C-128
Effective 1-1-65

All distances must be from the outer boundaries of the Section.

Operator Yates Petroleum Corporation			Lease Jackson "AT"		Well No. 6
Unit Letter O	Section 14	Township 17S	Range 25E	County Eddy	
Actual Footage Location of Well: 940 feet from the South line and 2310 feet from the East line					
Ground Level Elev. 3482'	Producing Formation San Andres		Pool Eagle Creek San Andres		Dedicated Acreage: 40 Acres

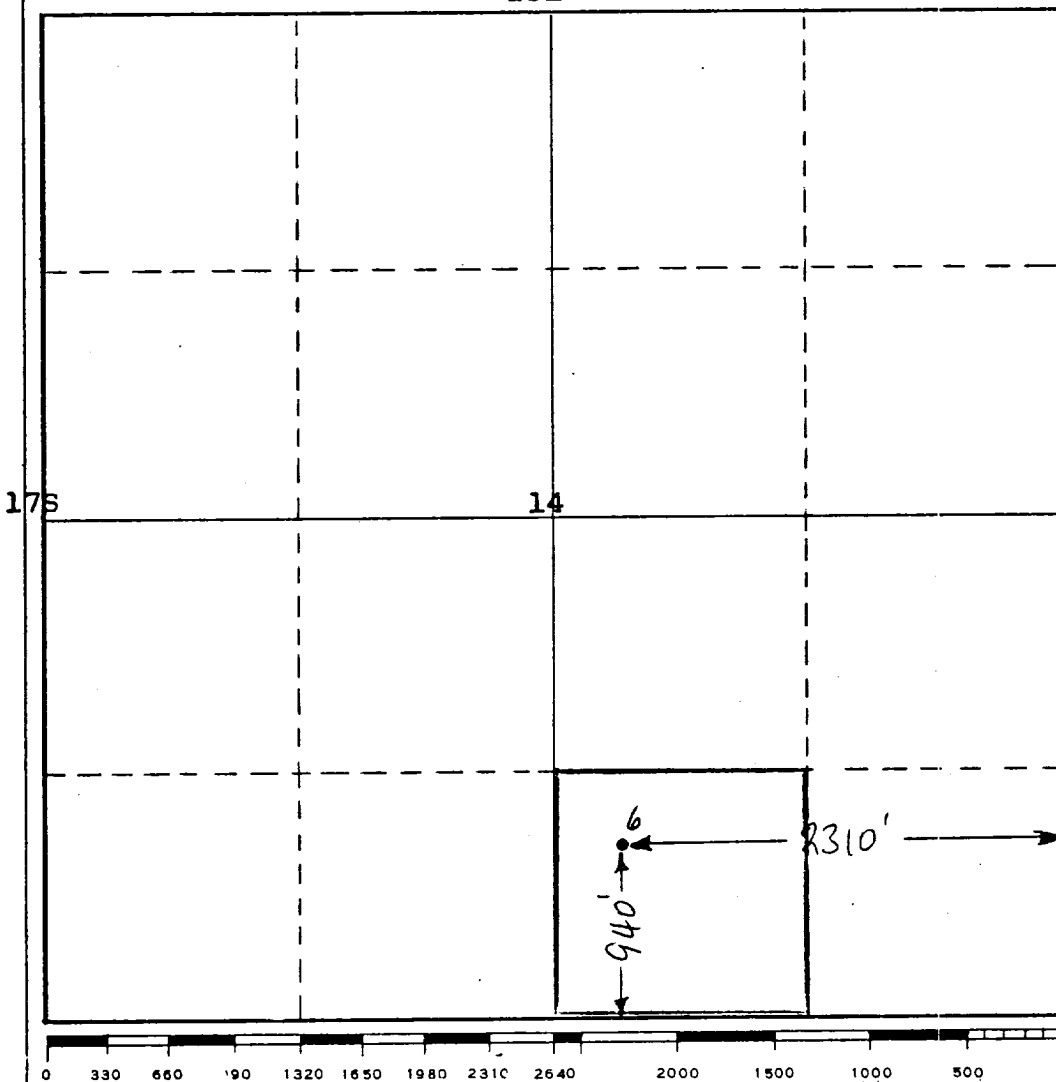
1. Outline the acreage dedicated to the subject well by colored pencil or hachure marks on the plat below.
2. If more than one lease is dedicated to the well, outline each and identify the ownership thereof (both as to working interest and royalty).
3. If more than one lease of different ownership is dedicated to the well, have the interests of all owners been consolidated by communitization, unitization, force-pooling, etc?

☐ Yes ☐ No If answer is "yes," type of consolidation _____

If answer is "no," list the owners and tract descriptions which have actually been consolidated. (Use reverse side of this form if necessary.) _____

No allowable will be assigned to the well until all interests have been consolidated (by communitization, unitization, forced-pooling, or otherwise) or until a non-standard unit, eliminating such interests, has been approved by the Commission.

25E



CERTIFICATION

I hereby certify that the information contained herein is true and complete to the best of my knowledge and belief.

Eddie M. Mahfood

Name
Eddie M. Mahfood

Position
Engineer

Company
Yates Petroleum Corp.

Date
August 6, 1974

I hereby certify that the well location shown on this plat was plotted from field notes of actual surveys made by me or under my supervision, and that the same is true and correct to the best of my knowledge and belief.

August 6, 1974

Date Surveyed

Eddie M. Mahfood
Registered Professional Engineer
and/or Land Surveyor

Certificate No. **4605**