

NO. OF COPIES RECEIVED	5
DISTRIBUTION	
SANTA FE	1
FILE	1
U.S.G.S.	5
LAND OFFICE	
OPERATOR	1

NEW MEXICO OIL CONSERVATION COMMISSION
RECEIVED

AUG 23 1974

30-015-21345

Form C-101
Revised 1-1-65

5A. Indicate Type of Lease
STATE ☐ FEE ☒

5. State Oil & Gas Lease No.

O. C. C.

APPLICATION FOR PERMIT TO DRILL, DEEPEN, OR PLUG BACK

1a. Type of Work DRILL <input checked="" type="checkbox"/> DEEPEN <input type="checkbox"/> PLUG BACK <input type="checkbox"/>			7. Unit Agreement Name
b. Type of Well OIL WELL <input checked="" type="checkbox"/> GAS WELL <input type="checkbox"/> OTHER <input type="checkbox"/> SINGLE ZONE <input type="checkbox"/> MULTIPLE ZONE <input type="checkbox"/>			8. Farm or Lease Name Achen-Frey "DM"
2. Name of Operator Yates Petroleum Corporation			9. Well No. 5
3. Address of Operator 207 South 4th Street - Artesia, NM 88210			10. Field and Pool, or Wildcat Und Eagle Creek S.A.
4. Location of Well UNIT LETTER J LOCATED 2310 FEET FROM THE South LINE AND 2310 FEET FROM THE East LINE OF SEC. 13 TWP. 17S RGE. 25E NMPM			12. County Eddy
19. Proposed Depth Approx 1500'			19A. Formation San Andres
20. Rotary or C.T. Rotary			21. Elevations (Show whether DF, RT, etc.) 3450' GR
21A. Kind & Status Plug. Bond Blanket			21B. Drilling Contractor Cactus Drilling Co.
22. Approx. Date Work will start As soon as approved			

23.

PROPOSED CASING AND CEMENT PROGRAM

SIZE OF HOLE	SIZE OF CASING	WEIGHT PER FOOT	SETTING DEPTH	SACKS OF CEMENT	EST. TOP
14 1/2"	10-3/4"	32#	Approx 330'	Circulate	
9 1/2"	7"	23#	" 1220'	Circulate	
6 1/4"	5 1/2 & 4 1/2"	15.5 & 9.5#	" 1500'	125 sx	

It is our intention to drill a San Andres test with approx. 330' of surface casing set to shut off gravel and cavings. Intermediate casing will be set 100' below the Artesian zone and if productive 5 1/2" and 4 1/2" production casing will be run, perforated and stimulated for production.

APPROVAL VALID
FOR 90 DAYS UNLESS
DRILLING COMMENCED,

EXPIRES 11-26-74

IN ABOVE SPACE DESCRIBE PROPOSED PROGRAM: IF PROPOSAL IS TO DEEPEN OR PLUG BACK, GIVE DATA ON PRESENT PRODUCTIVE ZONE AND PROPOSED NEW PRODUCTIVE ZONE. GIVE BLOWOUT PREVENTER PROGRAM, IF ANY.

I hereby certify that the information above is true and complete to the best of my knowledge and belief.

Signed Eddie H. Mackey, Jr. Title Engineer Date 8-23-74
(This space for State Use)

APPROVED BY W. A. Grasset TITLE OIL AND GAS INSPECTOR DATE AUG 26 1974

CONDITIONS OF APPROVAL, IF ANY:

Adequate Blowout
Preventer to be used

Cement must be circulated to
surface behind 10 3/4" & 7" casing

Notify N.M.O.C.C. in sufficient
time to witness cementing
the 7" casing

NEW MEXICO OIL CONSERVATION COMMISSION
WELL LOCATION AND ACREAGE DEDICATION PLAT

Form C-102
Supersedes C-128
Effective 1-1-65

All distances must be from the outer boundaries of the Section.

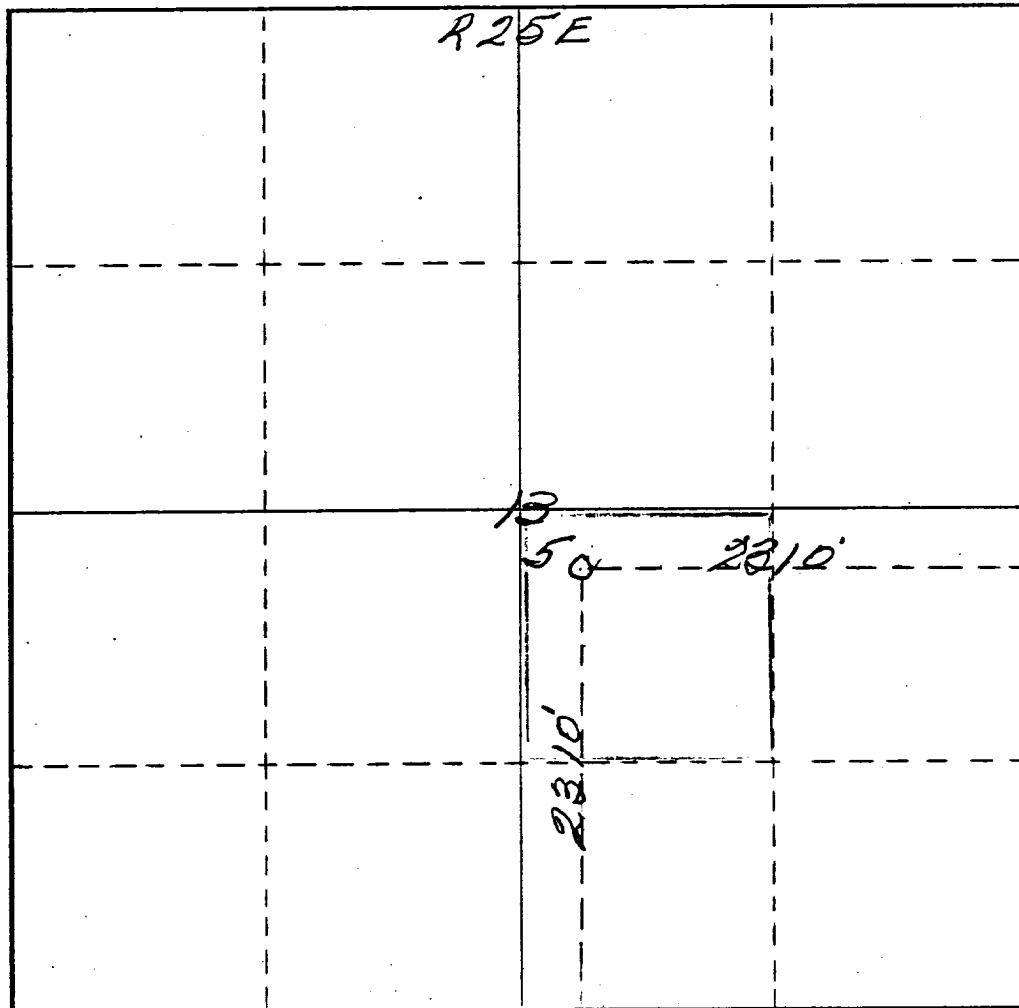
Operator <i>Yates Petroleum Corporation</i>			Lease <i>Achen-Frey DM</i>		Well No. <i>5</i>
Unit Letter <i>J</i>	Section <i>13</i>	Township <i>17 South</i>	Range <i>25 East</i>	County <i>Eddy</i>	
Actual Footage Location of Well: <i>2310</i> feet from the <i>South</i> line and <i>2310</i> feet from the <i>East</i> line					
Ground Level Elev. <i>3450</i>	Producing Formation <i>San Andres</i>		Pool <i>Eagle Creek (S.A.)</i>	Dedicated Acreage: <i>40</i> Acres	

1. Outline the acreage dedicated to the subject well by colored pencil or hachure marks on the plat below.
2. If more than one lease is dedicated to the well, outline each and identify the ownership thereof (both as to working interest and royalty).
3. If more than one lease of different ownership is dedicated to the well, have the interests of all owners been consolidated by communitization, unitization, force-pooling, etc?

☐ Yes ☐ No If answer is "yes," type of consolidation _____

If answer is "no," list the owners and tract descriptions which have actually been consolidated. (Use reverse side of this form if necessary.) _____

No allowable will be assigned to the well until all interests have been consolidated (by communitization, unitization, forced-pooling, or otherwise) or until a non-standard unit, eliminating such interests, has been approved by the Commission.



CERTIFICATION

I hereby certify that the information contained herein is true and complete to the best of my knowledge and belief.

Eddie M. Mahfood

Name

Eddie M. Mahfood

Position

Engineer

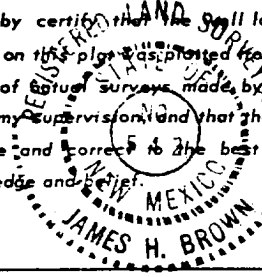
Company

Yates Petroleum Corp.

Date

8-23-74

I hereby certify that the well location shown on this plat was plotted from field notes of actual surveys made by me or under my supervision, and that the same is true and correct to the best of my knowledge and belief.



Date Surveyed

August 22nd 1974

Registered Professional Engineer
and/or Land Surveyor

James H. Brown

Certificate No.

542

0 330 660 990 1320 1650 1980 2310 2640 2000 1500 1000 500 0