

UNITED STATES  
DEPARTMENT OF THE INTERIOR  
GEOLOGICAL SURVEY

## APPLICATION FOR PERMIT TO DRILL, DEEPEN, OR PLUG BACK

1a. TYPE OF WORK DRILL <input checked="" type="checkbox"/> DEEPEN <input type="checkbox"/> PLUG BACK <input type="checkbox"/>		5. LEASE DESIGNATION AND SERIAL NO. NM 0 036191	
b. TYPE OF WELL OIL WELL <input checked="" type="checkbox"/> GAS WELL <input type="checkbox"/> OTHER <input type="checkbox"/>		6. IF INDIAN, ALLOTTEE OR TRIBE NAME	
2. NAME OF OPERATOR Yates Petroleum Corporation -		7. UNIT AGREEMENT NAME	
3. ADDRESS OF OPERATOR 207 South 4th Street - Artesia, NM 88210		8. FARM OR LEASE NAME Eagle Creek S.A.	
4. LOCATION OF WELL (Report location clearly and in accordance with any State requirements.) At surface 990' FNL & 990' FEL of Section 22-17S-25E, D.C. C. C. C. At proposed prod. zone		9. WELL NO. 6	
14. DISTANCE IN MILES AND DIRECTION FROM NEAREST TOWN OR POST OFFICE* Approx. 5 miles West of Artesia, NM 88210		10. FIELD AND POOL, OR WILDCAT Eagle Creek S.A.	
15. DISTANCE FROM PROPOSED* LOCATION TO NEAREST PROPERTY OR LEASE LINE, FT. (Also to nearest drilg. unit line, if any) 990'		11. SEC. T., R., M., OR BLK. AND SURVEY OR AREA Sec. 22-17S-25E Unit A NMPM	
16. NO. OF ACRES IN LEASE		12. COUNTY OR PARISH Eddy	
17. NO. OF ACRES ASSIGNED TO THIS WELL		13. STATE NM	
18. DISTANCE FROM PROPOSED LOCATION* TO NEAREST WELL, DRILLING, COMPLETED OR APPLIED FOR, ON THIS LEASE, FT. 550'		19. PROPOSED DEPTH Approx. 1500'	
20. ROTARY OR CABLE TOOLS Rotary		21. ELEVATIONS (Show whether DF, RT, GR, etc.) 3524' GR	
22. APPROX. DATE WORK WILL START* As soon as approved		23. PROPOSED CASING AND CEMENTING PROGRAM	

SIZE OF HOLE	SIZE OF CASING	WEIGHT PER FOOT	SETTING DEPTH	QUANTITY OF CEMENT
15"	10-3/4"	32#	Approx 300'	Circulate
9 1/2"	7"	20, 23#	" 1140'	Circulate
6 1/4"	4 1/2" & 5 1/2" (Tapered)	9.5# 15.5#	" 1500'	100 sx

We propose to drill a San Andres test with approx. 300' of 10-3/4" casing to shut off surface gravel and cavings and 7" casing will be set 100' below the Artesian zone with cement circulated. A tapered production string will be run to TD and cemented, perforated and Sand-Frac'd for Slaughter production

Mud Program:- Fresh water gel and LCM to 1140' (or dry drill), water from casing point to Total Depth.

BOP Program:- BOP's will be installed on 7" casing and tested daily.

IN ABOVE SPACE DESCRIBE PROPOSED PROGRAM: If proposal is to deepen or plug back, give data on present productive zone and proposed new productive zone. If proposal is to drill or deepen directionally, give pertinent data on subsurface locations and measured and true vertical depths, give blowout preventer program, if any.

24. SIGNED Eddie M. Lutz TITLE Engineer DATE 8-29-74  
(This space for Federal or State office use)

PERMIT NO. \_\_\_\_\_ APPROVAL DATE SEP 6 1974  
DISTRICT ENGINEER  
APPROVED BY [Signature] TITLE \_\_\_\_\_ DATE \_\_\_\_\_  
CONDITIONS OF APPROVAL, IF ANY:  
DECLARED WATER BASIN  
CEMENT BEHIND 10 3/4 + 7"  
CASING MUST BE CIRCULATED.

THIS APPROVAL IS RESCINDED IF  
ARE NOT COMPLETED WITHIN 3

\*See Instructions On Reverse Side

NOTIFY USGS IN SUFFICIENT TIME TO  
WITNESS CEMENTING THE 10 3/4 + 7" CASING.

NEW MEXICO OIL CONSERVATION COMMISSION  
WELL LOCATION AND ACREAGE DEDICATION PLAT

Form C-102  
Supersedes C-128  
Effective 1-1-65

All distances must be from the outer boundaries of the Section.

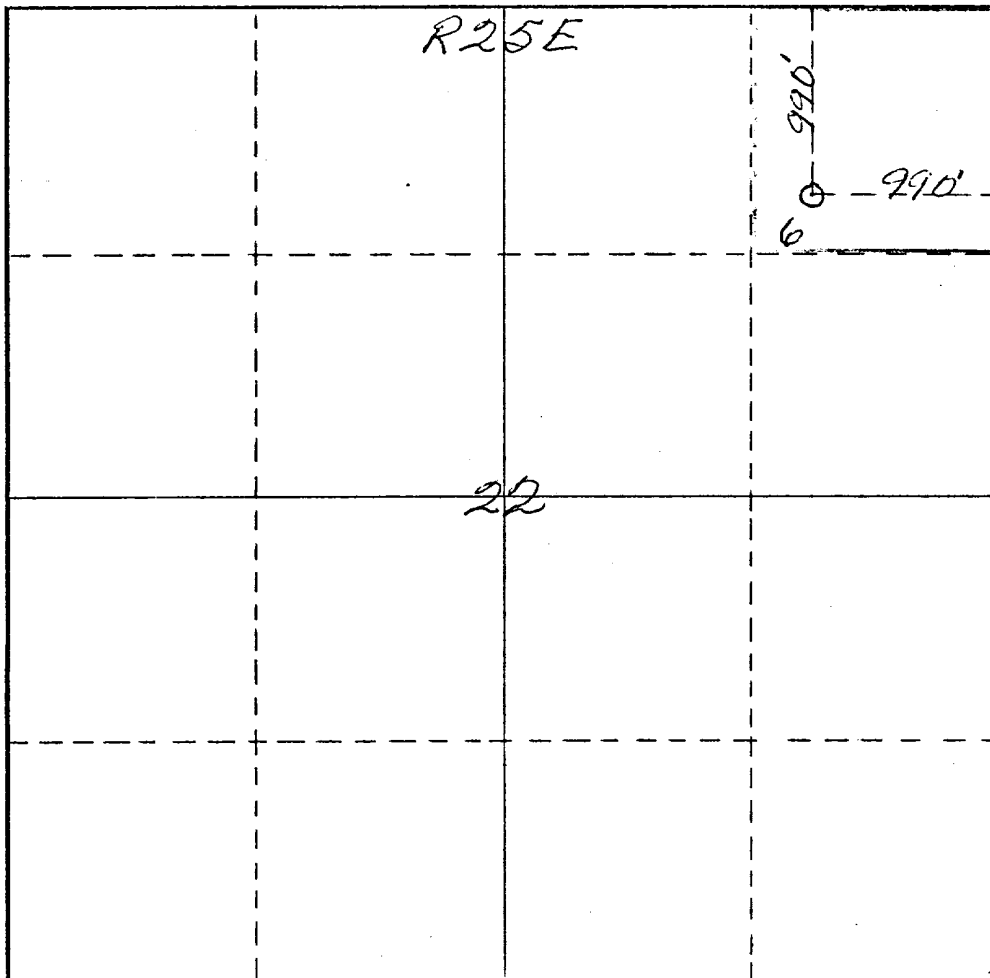
Operator <i>Yates Petroleum Corp.</i>			Lease <i>Federates "B0"</i>			Well No. <i>6</i>
Unit Letter <i>A</i>	Section <i>22</i>	Township <i>17 South</i>	Range <i>25 East</i>	County <i>Eddy</i>		
Actual Footage Location of Well: <i>990</i> feet from the <i>North</i> line and <i>990</i> feet from the <i>East</i> line						
Ground Level Elev. <i>3524</i>	Producing Formation <i>San Andres</i>		Pool <i>Eagle Creek San Andres</i>		Dedicated Acreage: <i>40</i> Acres	

1. Outline the acreage dedicated to the subject well by colored pencil or hachure marks on the plat below.
2. If more than one lease is dedicated to the well, outline each and identify the ownership thereof (both as to working interest and royalty).
3. If more than one lease of different ownership is dedicated to the well, have the interests of all owners been consolidated by communitization, unitization, force-pooling, etc?

☐ Yes ☐ No If answer is "yes," type of consolidation \_\_\_\_\_

If answer is "no," list the owners and tract descriptions which have actually been consolidated. (Use reverse side of this form if necessary.) \_\_\_\_\_

No allowable will be assigned to the well until all interests have been consolidated (by communitization, unitization, forced-pooling, or otherwise) or until a non-standard unit, eliminating such interests, has been approved by the Commission.



CERTIFICATION

I hereby certify that the information contained herein is true and complete to the best of my knowledge and belief.

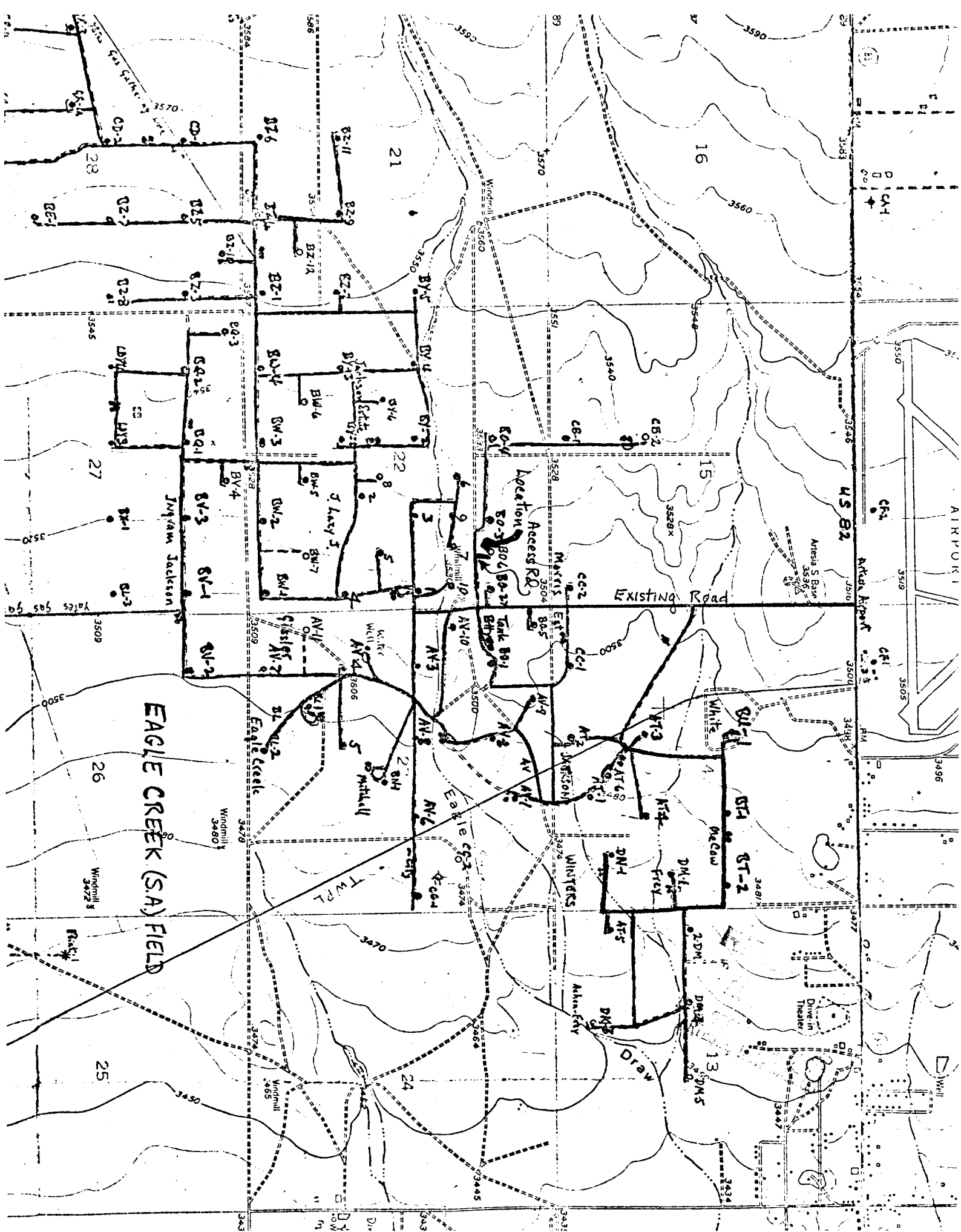
*Eddie M. Mahfood*  
Name  
**Eddie M. Mahfood**  
Position  
**Engineer**  
Company  
**Yates Petroleum Corp.**  
Date  
**8-29-74**

I hereby certify that the well location shown on this plat was plotted from field notes of actual surveys made by me or under my supervision and that the same is true and correct to the best of my knowledge and belief.

Date Surveyed  
*August 28th 1974*  
Registered Professional Engineer and/or Land Surveyor

*James H. Brown*  
Certificate No. **542**

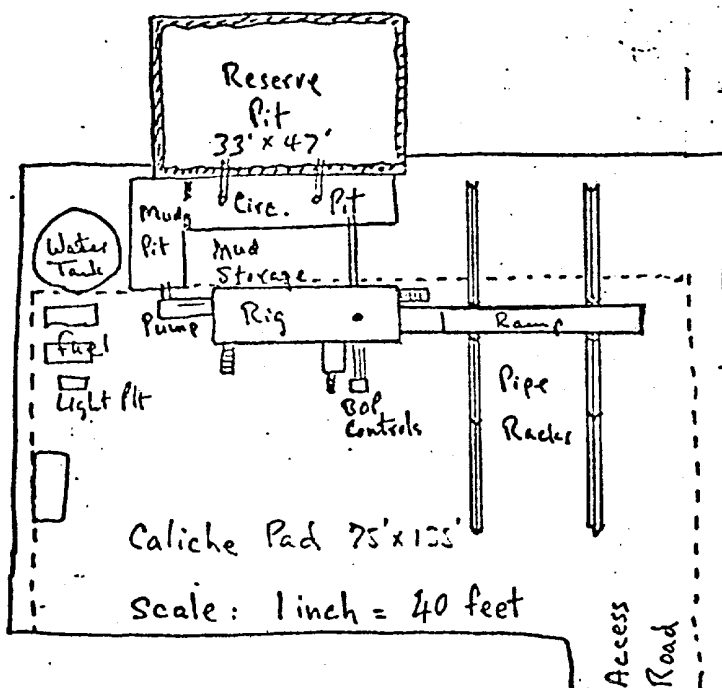
0 330 660 990 1320 1650 1980 2310 2640 2000 1500 1000 500



Development plan for surface use to accompany, "Applications to Drill Onshore Oil, Gas, or Geothermal Steam Wells on Public Domain and acquired Federal Lands:"

1. Existing roads. See attached Topo Map. Roads are caliche and maintained by Company as needed.
2. Planned access roads. See attached Topo Map. North-South road to allow direct access to existing lease facilities.
3. Location of wells. See attached Topo Map. In-fill well in Eagle Creek (SA).
4. Lateral roads to wells locations. See attached Topo Map. No new lateral roads needed or planned - will use existing roads.
5. Location of tank batteries and flowlines. See attached Topo Map. Will use existing tank battery. Flowlines will be laid alongside roadways.
6. Locations and types of water supply. Fresh water source well located in Unit I Section 23-17S-25E (Eagle Creek) utilized for drilling operations.
7. Methods for handling waste disposal. Mud and engine oil in circulating pit, trash in waste barrel for disposal in approved (City dump).
8. Location of camps NA
9. Location of airstrips. NA
10. Location layout to include position of the rig, mud tanks, reserve pits, burn pits, pipe racks, etc. See sketch.
11. Plans for restoration of the surface. Pits to be fenced until dried and leveled. Upon abandonment, surface to be restored to near original.
12. Any other information which the Approving Official considers essential to his assessment of the impact on the environment. Rolling terrain w/prairie grass and tumbleweed, patent surface. Development plan satisfactory to rancher, Mr. Bill Gissler, Box 937, Artesia, New Mexico 88210 - Telephone #746-9544.

The affected Federal and State surface managing agencies shall have access to or, if feasible, may be provided with copies of such development.



Submitted by:

Yates Petroleum Corporation  
BY Eddie M. Mahfood  
Eddie M. Mahfood - Engineer

Approved by:

U. S. Geological Survey  
BY \_\_\_\_\_