

NO. OF COPIES RECEIVED	5
DISTRIBUTION	
SANTA FE	1
FILE	1
U.S.G.S.	1
LAND OFFICE	1
OPERATOR	1

NEW MEXICO OIL CONSERVATION COMMISSION

RECEIVED

SEP 26 1974

30-015-21382

Form C-101  
Revised 1-1-65

5A. Indicate Type of Lease
STATE <input type="checkbox"/> FEE <input checked="" type="checkbox"/>
5. State Oil & Gas Lease No.

APPLICATION FOR PERMIT TO DRILL, DEEPEN, OR PLUG BACK

1a. Type of Work		1b. Type of Well		2. Name of Operator		3. Address of Operator		4. Location of Well		5. Unit Agreement Name		6. Farm or Lease Name		7. Well No.		8. Field and Pool, or Wildcat		9. County		10. Proposed Depth		11. Formation		12. Rotary or C.T.	
DRILL <input checked="" type="checkbox"/> DEEPEN <input type="checkbox"/> PLUG BACK <input type="checkbox"/>		OIL WELL <input checked="" type="checkbox"/> GAS WELL <input type="checkbox"/> OTHER <input type="checkbox"/>		Yates Petroleum Corporation		207 South 4th Street - Artesia, NM 88210		UNIT LETTER M LOCATED 990 FEET FROM THE South LINE		7. Unit Agreement Name		Morris Estate CC		3		Eagle Creek		Eddy		Approx 1500'		San Andres		Rotary	
AND 330 FEET FROM THE West LINE OF SEC. 14 TWP. 17S RGE. 25E NMPM																									
21. Elevations (Show whether DF, RT, etc.)		21A. Kind & Status Plug. Bond		21B. Drilling Contractor		22. Approx. Date Work will start																			
3502' GR		Blanket		Cactus Drilling Co.		As soon as approved																			

PROPOSED CASING AND CEMENT PROGRAM

SIZE OF HOLE	SIZE OF CASING	WEIGHT PER FOOT	SETTING DEPTH	SACKS OF CEMENT	EST. TOP
14-3/4"	10-3/4"	32#	Approx 300'	Circulate	
9-7/8"	7"	20-23#	" 1150'	Circulate	
6 1/4"	4 1/2" & 5 1/2" (Tapered)	9.5# 15.5#	" 1500'	125 sacks	

We propose to drill a San Andres test with approx. 300' of 10-3/4" casing to shut off surface gravel and cavings and 7" casing will be set 100' below the Artesian zone with cement circulated. A tapered production string will be run to TD and cemented, perforated and Sand-Frac'd for Slaughter production.

Mud Program: - Fresh water gel and LCM to 1150' (or dry drill), water from casing point to Total Depth.

BOP Program: - BOP's will be installed on 7" casing and tested daily.

APPROVAL VALID  
FOR 90 DAYS UNLESS  
DRILLING COMMENCED,

EXPIRES 12-27-74

IN ABOVE SPACE DESCRIBE PROPOSED PROGRAM: IF PROPOSAL IS TO DEEPEN OR PLUG BACK, GIVE DATA ON PRESENT PRODUCTION ZONE AND PROPOSED NEW PRODUCTION ZONE. GIVE BLOWOUT PREVENTER PROGRAM, IF ANY.

I hereby certify that the information above is true and complete to the best of my knowledge and belief.

Signed Eddie M. Healy Title Engineer Date 9-26-74  
(This space for State Use)

APPROVED BY W. R. Gussert TITLE OIL AND GAS INSPECTOR DATE SEP 27 1974

CONDITIONS OF APPROVAL, IF ANY:

Cement must be circulated to  
surface behind 10 3/4" + 7" casing

Notify N.M.O.C.C. in sufficient  
time to witness cementing  
the 7" casing

NEW MEXICO OIL CONSERVATION COMMISSION  
WELL LOCATION AND ACREAGE DEDICATION PLAT

Form C-102  
Supersedes C-128  
Effective 1-1-65

All distances must be from the outer boundaries of the Section.

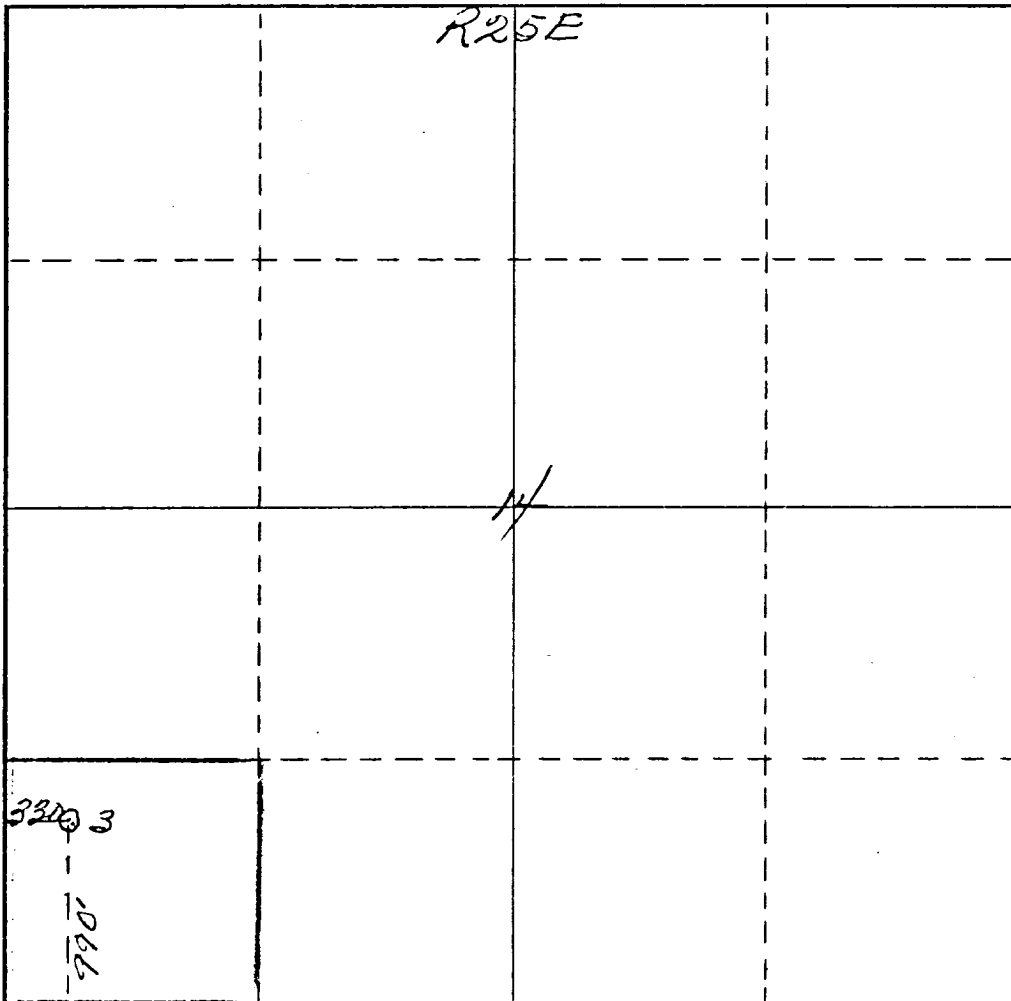
Operator <i>Yates Petroleum Corporation</i>			Lease <i>Morris Estate "CC"</i>		Well No. <i>3</i>
Unit Letter <i>M</i>	Section <i>14</i>	Township <i>17 South</i>	Range <i>25 East</i>	County <i>Edley</i>	
Actual Footage Location of Well: <i>990</i> feet from the <i>South</i> line and <i>330</i> feet from the <i>West</i> line					
Ground Level Elev. <i>3502</i>	Producing Formation <i>San Andres</i>		Pool <i>Eagle Creek (S.A.)</i>		Dedicated Acreage: <i>40</i> Acres

1. Outline the acreage dedicated to the subject well by colored pencil or hachure marks on the plat below.
2. If more than one lease is dedicated to the well, outline each and identify the ownership thereof (both as to working interest and royalty).
3. If more than one lease of different ownership is dedicated to the well, have the interests of all owners been consolidated by communitization, unitization, force-pooling, etc?

☐ Yes ☐ No If answer is "yes," type of consolidation \_\_\_\_\_

If answer is "no," list the owners and tract descriptions which have actually been consolidated. (Use reverse side of this form if necessary.) \_\_\_\_\_

No allowable will be assigned to the well until all interests have been consolidated (by communitization, unitization, forced-pooling, or otherwise) or until a non-standard unit, eliminating such interests, has been approved by the Commission.



CERTIFICATION

I hereby certify that the information contained herein is true and complete to the best of my knowledge and belief.

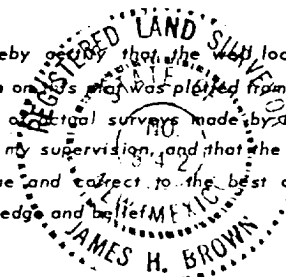
*Eddie M. Mahfood*  
Name  
**Eddie M. Mahfood**

Position  
**Engineer**

Company  
**Yates Petroleum Corp.**

Date  
**9-26-74**

I hereby certify that the well location shown on this plat was plotted from field notes of legal surveys made by me or under my supervision, and that the same is true and correct to the best of my knowledge and belief.



Date Surveyed  
*September 25th 1974*  
Registered Professional Engineer  
and/or Land Surveyor

*James H. Brown*  
Certificate No. **542**

