

NO. OF COPIES RECEIVED	
DISTRIBUTION	
SANTA FE	
FILE	
U.S.G.S.	
LAND OFFICE	
OPERATOR	

NEW MEXICO OIL CONSERVATION COMMISSION

RECEIVED

SEP 30 1974

30-015-21383
Form C-101
Revised 1-1-65

5A. Indicate Type of Lease STATE <input checked="" type="checkbox"/> FEE <input type="checkbox"/>
5. State Oil & Gas Lease No. NM E-2075
7. Unit Agreement Name
8. Farm or Lease Name Pan Am State
9. Well No. 3
10. Field and Pool, or Wildcat
12. County Eddy
19. Proposed Depth 850'
19A. Formation Seven Rivers
20. Rotary or C.T. C.T.
21. Elevations (Show whether DF, RT, etc.) 3682 G.L.
21A. Kind & Status Plug. Bond Active, Statewide
21B. Drilling Contractor Charles C. Powell
22. Approx. Date Work will start Oct. 1, 1974

APPLICATION FOR PERMIT TO DRILL, DEEPEN, OR PLUG BACK, OFFICE

1a. Type of Work
b. Type of Well DRILL ☒ DEEPEN ☐ PLUG BACK ☐
OIL WELL ☒ GAS WELL ☐ OTHER ☐ SINGLE ZONE ☐ MULTIPLE ZONE ☐

2. Name of Operator
Marbob Energy Corporation

3. Address of Operator
P. O. Box 304, Artesia, New Mexico

4. Location of Well
UNIT LETTER I LOCATED 2310 FEET FROM THE South LINE
AND 990 FEET FROM THE East LINE OF SEC. 28 TWP. 17S RGE. 28E NMPM

19. Proposed Depth
850'

19A. Formation
Seven Rivers

20. Rotary or C.T.
C.T.

21. Elevations (Show whether DF, RT, etc.)
3682 G.L.

21A. Kind & Status Plug. Bond
Active, Statewide

21B. Drilling Contractor
Charles C. Powell

22. Approx. Date Work will start
Oct. 1, 1974

PROPOSED CASING AND CEMENT PROGRAM

SIZE OF HOLE	SIZE OF CASING	WEIGHT PER FOOT	SETTING DEPTH	SACKS OF CEMENT	EST. TOP
8 5/8"	7"	20 lbs.	450'		
6 3/4"	5 1/2"	15 lbs.	850'		

We propose to drill to approximately 450', set 7" casing, shut off water, drill on to approximately 850', set 5 1/2" casing, pull 7" and circulate cement on 5 1/2".

APPROVAL VALID
FOR 90 DAYS UNLESS
DRILLING COMMENCED,
EXPIRES 12-30-74

IN ABOVE SPACE DESCRIBE PROPOSED PROGRAM; IF PROPOSAL IS TO DEEPEN OR PLUG BACK, GIVE DATA ON PRESENT PRODUCTIVE ZONE AND PROPOSED NEW PRODUCTIVE ZONE. GIVE BLOWOUT PREVENTER PROGRAM, IF ANY.

I hereby certify that the information above is true and complete to the best of my knowledge and belief.

Signed Alois Gradican Title Agent Date Sept. 27, 1974

(This space for State Use)

APPROVED BY W. A. Gressett TITLE OIL AND GAS INSPECTOR DATE SEP 30 1974

CONDITIONS OF APPROVAL, IF ANY:

Notify N.M.O.C.C. in sufficient
time to witness cementing
the 5 1/2" casing

Cement must be circulated to
surface behind 5 1/2" casing

NEW MEXICO OIL CONSERVATION COMMISSION
WELL LOCATION AND ACREAGE DEDICATION PLAT

Form C-102
Supersedes C-128
Effective 1-1-65

All distances must be from the outer boundaries of the Section.

Operator Marbob Energy Corp.		Lease Part A		Well No. 3	
Unit Letter I	Section 28	Township 17 South	Range 28 East	County Eddy	
Actual Footage Location of Well: 2310 feet from the South line and 990 feet from the East line					
Ground Level Elev. 3682	Producing Formation		Pool	Dedicated Acreage: 40 Acres	

1. Outline the acreage dedicated to the subject well by colored pencil or hachure marks on the plat below.
2. If more than one lease is dedicated to the well, outline each and identify the ownership thereof (both as to working interest and royalty).
3. If more than one lease of different ownership is dedicated to the well, have the interests of all owners been consolidated by communitization, unitization, force-pooling, etc?

☐ Yes ☐ No If answer is "yes," type of consolidation _____

RECEIVED

SEP 30 1974

O. C. C.

ARTERIA, OFFICE

If answer is "no," list the owners and tract descriptions which have actually been consolidated. (Use reverse side of this form if necessary.) _____

No allowable will be assigned to the well until all interests have been consolidated (by communitization, unitization, forced-pooling, or otherwise) or until a non-standard unit, eliminating such interests, has been approved by the Commission.

CERTIFICATION

I hereby certify that the information contained herein is true and complete to the best of my knowledge and belief.

Name

Position

Company

Date

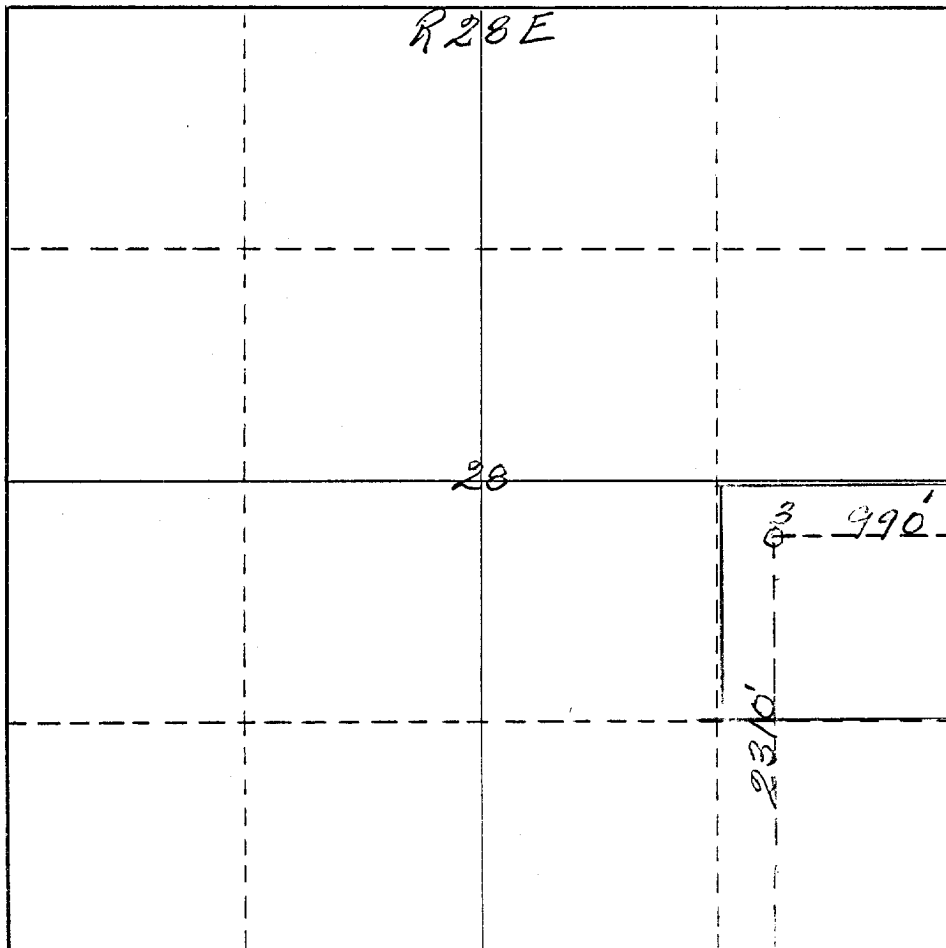
I hereby certify that the well location shown on this plat was plotted from field notes of actual surveys made by me or under my supervision and that the same is true and correct to the best of my knowledge and belief.

Date Surveyed

Registered Professional Engineer and/or Land Surveyor

Certificate No.

542



T
17
5