

NO. OF COPIES RECEIVED	6
DISTRIBUTION	
SANTA FE	1
FILE	1
U.S.G.S.	2
LAND OFFICE	1
OPERATOR	1

NEW MEXICO OIL CONSERVATION COMMISSION

30-015-21442  
Form C-101  
Revised 1-1-65

RECEIVED

5A. Indicate Type of Lease	
STATE <input checked="" type="checkbox"/>	FEE <input type="checkbox"/>
5. State Oil & Gas Lease No.	
K-4583	

APPLICATION FOR PERMIT TO DRILL, DEEPEN, OR PLUG BACK

1a. Type of Work		7. Unit Agreement Name	
DRILL <input checked="" type="checkbox"/> DEEPEN <input type="checkbox"/> O. O. PLUG BACK <input type="checkbox"/>		Ishie Lake Unit	
b. Type of Well		8. Farm or Lease Name	
OIL WELL <input type="checkbox"/> GAS WELL <input checked="" type="checkbox"/> OTHER <input type="checkbox"/>		Ishie Lake Unit	
2. Name of Operator		9. Well No.	
McClellan Oil Corporation		1	
3. Address of Operator		10. Field and Pool, or Wildcat	
P. O. Box 848, Roswell, New Mexico 88210		Wildcat	
4. Location of Well		12. County	
UNIT LETTER I LOCATED 1980 FEET FROM THE South LINE		Eddy	
AND 660 FEET FROM THE East LINE OF SEC. 12 TWP. 16-S RGE. 28-E NMPM			
19. Proposed Depth		19A. Formation	
9900'		Mississippian	
20. Rotary or C.T.		Rotary & C.T.	
21. Elevations (Show whether DF, RT, etc.)		22. Approx. Date Work will start	
3544.8 ft.		December 14, 1974	
21A. Kind & Status Plug. Bond		21B. Drilling Contractor	
Statewide		Hondo Drllg. Co.	

23.

PROPOSED CASING AND CEMENT PROGRAM

SIZE OF HOLE	SIZE OF CASING	WEIGHT PER FOOT	SETTING DEPTH	SACKS OF CEMENT	EST. TOP
24"	20"	48#	40'	100	Circ.
17 1/2"	13-3/8"	38#	300'	150	150'
12 1/2"	8-5/8"	24#	2000'	400	1200'
7-7/8"	4 1/2"	15#	9900'	500	8000'

Propose to drill to 9900' or the top of the Mississippian, whichever is shallower.

Hondo Drilling Company will be the drilling Contractor. Their blowout preventer - 10", 900 Series rotary head, 10" 900 Series hydraulic double with pipe and blank rams and adequate choke manifold.

A spudder will be utilized for approximately 15 days until the Hondo rig is available.

APPROVAL VALID  
FOR 90 DAYS UNLESS  
DRILLING COMMENCED,

EXPIRES 3-14-75

IN ABOVE SPACE DESCRIBE PROPOSED PROGRAM: IF PROPOSAL IS TO DEEPEN OR PLUG BACK, GIVE DATA ON PRESENT PRODUCTIVE ZONE AND PROPOSED NEW PRODUCTIVE ZONE. GIVE BLOWOUT PREVENTER PROGRAM, IF ANY.

I hereby certify that the information above is true and complete to the best of my knowledge and belief.

Signed Paul J. McClellan Title Operator Date 12/13/74

(This space for State Use)

APPROVED BY W. A. Gussert TITLE OIL AND GAS INSPECTOR DATE DEC 14 1974

CONDITIONS OF APPROVAL, IF ANY:

Verbal approval 12-14-74

Cement must be circulated to  
surface behind 13 3/8" casing

NEW MEXICO OIL CONSERVATION COMMISSION  
WELL LOCATION AND ACREAGE DEDICATION PLAT

Form C-102  
Supersedes C-128  
Effective 1-1-65

All distances must be from the outer boundaries of the Section.

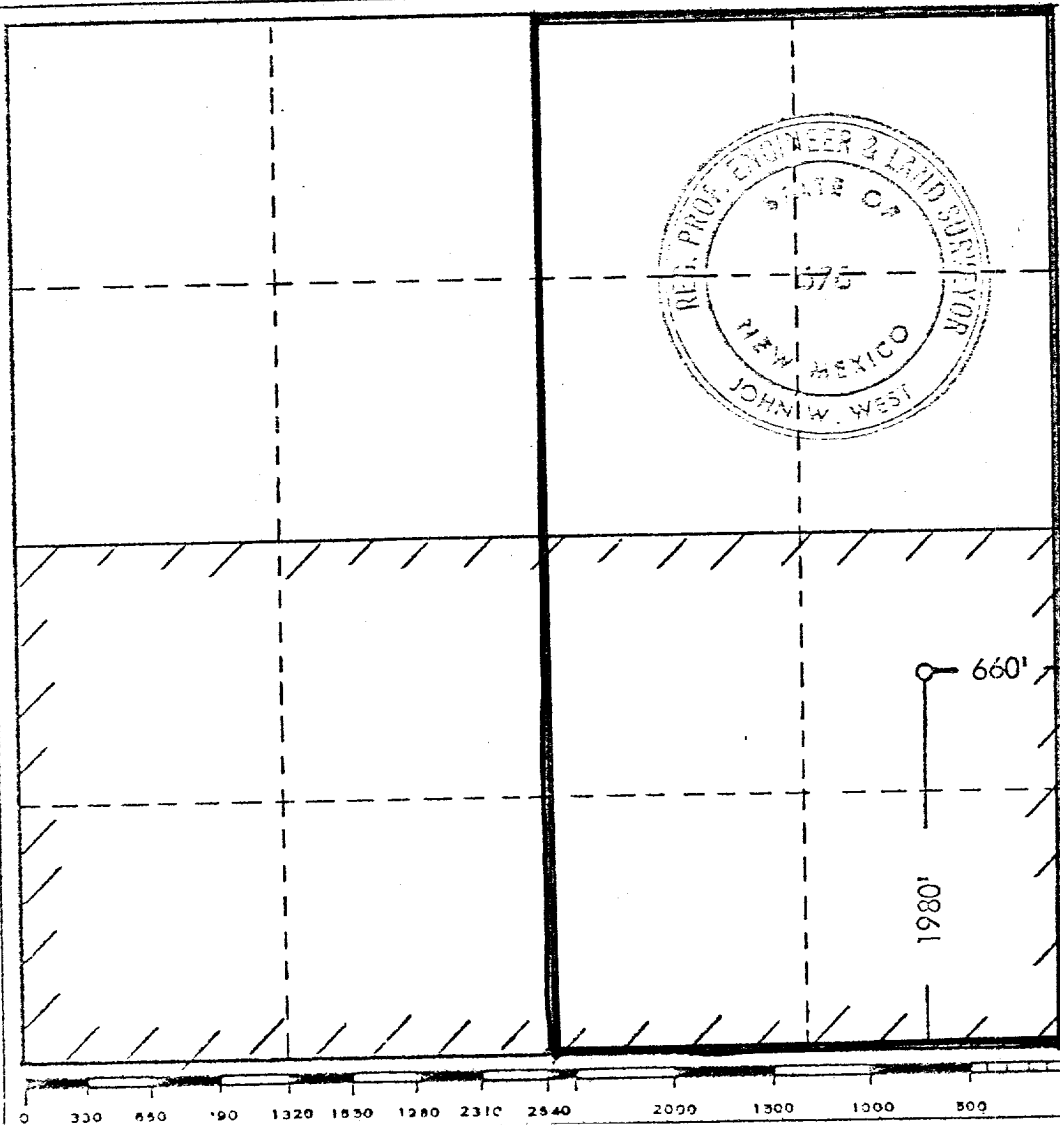
Operator <b>McClellan Oil Corp.</b>		Lease <b>Ishie Lake Unit</b>		Well No. <b>1</b>
Unit Letter <b>I</b>	Section <b>12</b>	Township <b>16 South</b>	Range <b>28 East</b>	County <b>Eddy</b>
Actual Footage Location of Well: <b>1980</b> feet from the <b>South</b> line and <b>660</b> feet from the <b>East</b> line				
Ground Level Elev. <b>3594.8</b>	Producing Formation <b>Mississippian</b>	Pool <b>Wildcat</b>	Dedicated Acreage: <b>E<math>\frac{1}{2}</math></b> <b>320</b> Acres	

1. Outline the acreage dedicated to the subject well by colored pencil or hachure marks on the plat below.
2. If more than one lease is dedicated to the well, outline each and identify the ownership thereof (both as to working interest and royalty).
3. If more than one lease of different ownership is dedicated to the well, have the interests of all owners been consolidated by communitization, unitization, force-pooling, etc?

☒ Yes ☐ No If answer is "yes," type of consolidation Unit Agreement

If answer is "no," list the owners and tract descriptions which have actually been consolidated. (Use reverse side of this form if necessary.) \_\_\_\_\_

No allowable will be assigned to the well until all interests have been consolidated (by communitization, unitization, forced-pooling, or otherwise) or until a non-standard unit, eliminating such interests, has been approved by the Commission.



CERTIFICATION

I hereby certify that the information contained herein is true and complete to the best of my knowledge and belief.

Name John W. West  
Position Agent  
Company McClellan Oil Corp.  
Date 12-14-1974

I hereby certify that the well location shown on this plat was plotted from field notes of actual surveys made by me or under my supervision, and that the same is true and correct to the best of my knowledge and belief.

Date Surveyed 12-14-1974  
Registered Professional Engineer and/or Land Surveyor

John W. West  
Certificate No. 676