

NO. OF COPIES RECEIVED	6
DISTRIBUTION	
ANTA FE	1
FILE	1 ✓
U.S.G.S.	2
LAND OFFICE	1
OPERATOR	1

NEW MEXICO OIL CONSERVATION COMMISSION

30-015-21463  
Form C-101  
Revised 1-1-65

**RECEIVED**

JAN 16 1975

5A. Indicate Type of Lease STATE <input checked="" type="checkbox"/> FEE <input type="checkbox"/>
5. State Oil & Gas Lease No. <b>B-4575</b>
7. Unit Agreement Name
8. Farm or Lease Name <b>Delhi State</b>
9. Well No. <b>3</b>
10. Field and Pool, or Wildcat <b>Und. E. Empire Yates SR</b>
12. County <b>Hddy</b>
19. Proposed Depth <b>850'</b>
19A. Formation <b>Seven Rivers</b>
20. Rotary or C.T. <b>C. T.</b>
21. Elevations (Show whether DF, RT, etc.) <b>3679 G.L.</b>
21A. Kind & Status Plug. Bond <b>Active - Statewide</b>
21B. Drilling Contractor <b>Jenkins Bros. Drilling Co.</b>
22. Approx. Date Work will start <b>Jan 20, 1975 Or before.</b>

APPLICATION FOR PERMIT TO DRILL, DEEPEN, OR PLUG BACK

1a. Type of Work <b>B.C.C.</b>
b. Type of Well DRILL <input checked="" type="checkbox"/> DEEPEN <input type="checkbox"/> PLUG BACK <input type="checkbox"/> OIL WELL <input checked="" type="checkbox"/> GAS WELL <input type="checkbox"/> OTHER <input type="checkbox"/> SINGLE ZONE <input type="checkbox"/> MULTIPLE ZONE <input type="checkbox"/>
2. Name of Operator <b>Marbob Energy Corporation</b>
3. Address of Operator <b>P. O. Box 304, Artesia, New Mexico 88210</b>
4. Location of Well UNIT LETTER <b>N</b> LOCATED <b>330</b> FEET FROM THE <b>South</b> LINE AND <b>2310</b> FEET FROM THE <b>West</b> LINE OF SEC. <b>28</b> TWP. <b>17S</b> RGE. <b>28E</b> NMPM
19. Proposed Depth <b>850'</b>
19A. Formation <b>Seven Rivers</b>
20. Rotary or C.T. <b>C. T.</b>
21. Elevations (Show whether DF, RT, etc.) <b>3679 G.L.</b>
21A. Kind & Status Plug. Bond <b>Active - Statewide</b>
21B. Drilling Contractor <b>Jenkins Bros. Drilling Co.</b>
22. Approx. Date Work will start <b>Jan 20, 1975 Or before.</b>

PROPOSED CASING AND CEMENT PROGRAM

SIZE OF HOLE	SIZE OF CASING	WEIGHT PER FOOT	SETTING DEPTH	SACKS OF CEMENT	EST. TOP
8 5/8"	7"	20 lbs.	450'		
6 3/4"	5 1/2"	14 - 15 lbs.	850'		

We propose to drill to approximately 450', set 7" casing, shut off water if any, and drill on to approximately 850', set 5 1/2" casing, pull and circulate cement on 5 1/2". we do not anticipate gas at these depths and will not set up a blowout preventer program at this time.

APPROVAL VALID  
FOR 90 DAYS UNLESS  
DRILLING COMMENCED,

EXPIRES 4-17-75

IN ABOVE SPACE DESCRIBE PROPOSED PROGRAM; IF PROPOSAL IS TO DEEPEN OR PLUG BACK, GIVE DATA ON PRESENT PRODUCTIVE ZONE AND PROPOSED NEW PRODUCTIVE ZONE. GIVE BLOWOUT PREVENTER PROGRAM, IF ANY.

I hereby certify that the information above is true and complete to the best of my knowledge and belief.

Signed Clair Goodson Title Agent Date January 16, 1975

(This space for State Use)

APPROVED BY W. H. Gussert TITLE SUPERVISOR, DISTRICT II DATE JAN 17 1975

CONDITIONS OF APPROVAL, IF ANY:

Notify N.M.O.C.C. in sufficient time to witness  
Cementing Op.

NEW MEXICO OIL CONSERVATION COMMISSION  
WELL LOCATION AND ACREAGE DEDICATION PLAT

Form C-102  
Supersedes C-128  
Effective 1-1-65

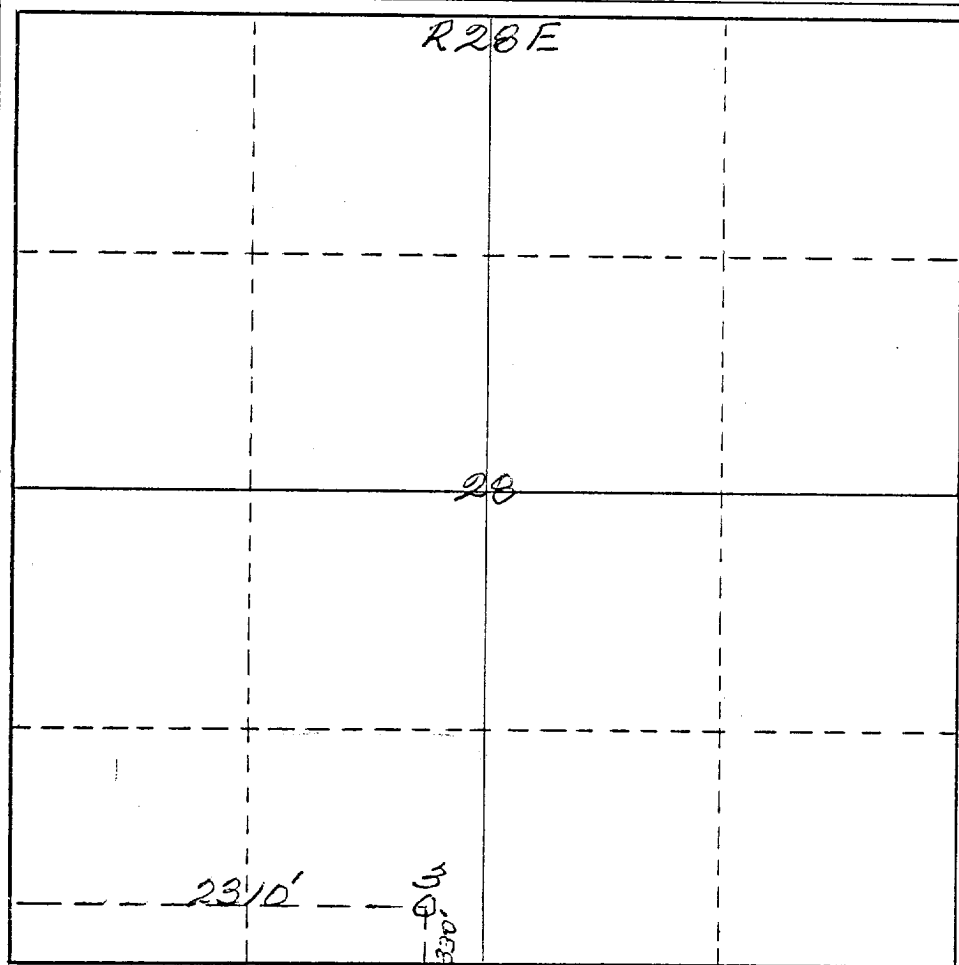
All distances must be from the outer boundaries of the Section.

Operator <i>Marlob Energy Corp.</i>		Lease <i>Delhi State</i>		Well No. <i>3</i>
Unit Letter <i>N</i>	Section <i>28</i>	Township <i>17 South</i>	Range <i>28 East</i>	County <i>Eddy</i>
Actual Footage Location of Well: <i>330</i> feet from the <i>South</i> line and <i>2310</i> feet from the <i>West</i> line				
Ground Level Elev. <i>3679</i>	Producing Formation <i>Lower Permian</i>	Pool <i>Delhi State</i>	Dedicated Acreage: <i>40</i> Acres	

- Outline the acreage dedicated to the subject well by colored pencil or hachure marks on the plat below.
- If more than one lease is dedicated to the well, outline each and identify the ownership thereof (both as to working interest and royalty).
- If more than one lease of different ownership is dedicated to the well, have the interests of all owners been consolidated by communitization, unitization, force-pooling, etc?  
 Yes  No If answer is "yes," type of consolidation \_\_\_\_\_

If answer is "no," list the owners and tract descriptions which have actually been consolidated. (Use reverse side of this form if necessary.) \_\_\_\_\_

No allowable will be assigned to the well until all interests have been consolidated (by communitization, unitization, forced-pooling, or otherwise) or until a non-standard unit, eliminating such interests, has been approved by the Commission.



CERTIFICATION

I hereby certify that the information contained herein is true and complete to the best of my knowledge and belief.

Name  
*Alois Goodaan*  
Position  
*Secretary-Treasurer*  
Company  
*Marlob Energy Corp.*  
Date  
*Jan. 16, 1975.*

I hereby certify that the well location shown on this plat is from field notes, actual surveys made by me or under my supervision, and that the same is true and correct to the best of my knowledge and belief.

Date Surveyed  
*January 4<sup>th</sup> 1975*  
Registered Professional Engineer and/or Land Surveyor  
*James H. Brown*  
Certificate No.  
*542*

T  
17  
S