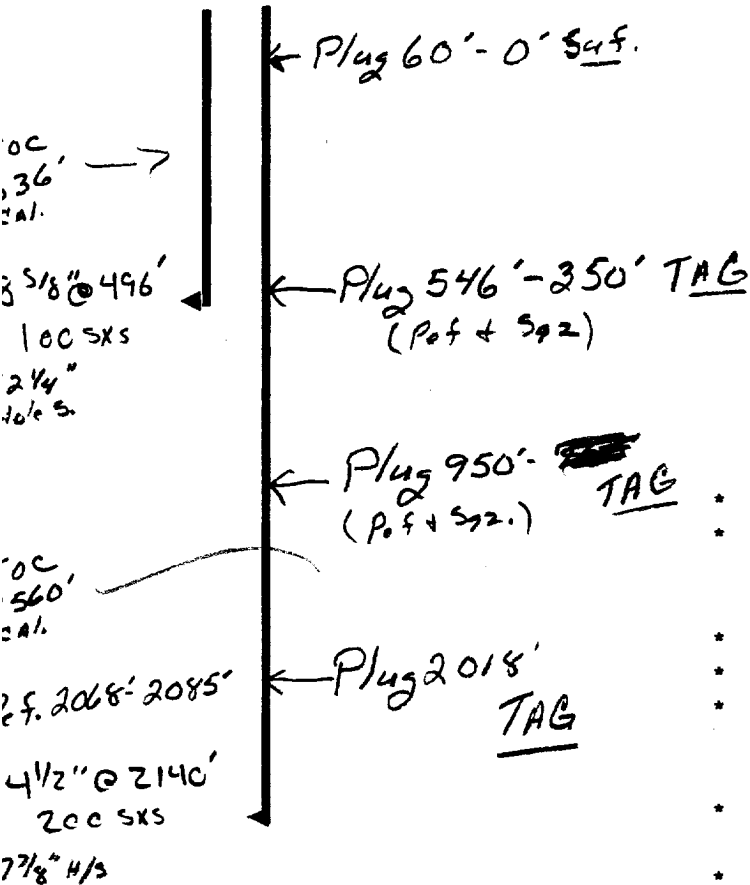


Operator Vintage Drilling Co.
 Well E. High Leased Fed. # 29
 Unit D Section 13 Township 16 Range 29
 API # 30-015-21502

TOPS

Sabala	~ 400'	*
B Salt	~ 800'	*
Gates	~ 950'	*
Privers	~ 1200'	
Bowers	~ 1500'	
Queen	~ 2068'	



- * Contact OCD 24 hrs. prior to any work done.
- * Salt gel mud consisting of 10# brine with 25# of gel per barrel must be placed between each plug.
- * Install dry hole marker as per Rule 202.B.2
- * Plugs are to be set from point indicated up.
- * Plugs must not be less than 100' or 25 Sacks of cement, whichever is greater, unless specifically indicated.
- * Shoe and stub plugs will be 50' above and below shoe or stub and tagged.
- * Surface plug will be from 0' - 60'
- * Where plugs are required, cement must be placed inside and outside of all casing string(s) in the correct footage or sacks required, if no cement exists.
- * Plugs to be tagged will be indicated.

[Handwritten signature]