

INSTRUCTIONS

This form is to be filed with the appropriate District Office of the Commission not later than 20 days after the completion of any newly-drilled or deepened well. It shall be accompanied by one copy of all electrical and radio-activity logs run on the well and a summary of all special tests conducted, including drill stem tests. All depths reported shall be measured depths. In the case of directionally drilled wells, true vertical depths shall also be reported. For multiple completions, items 30 through 34 shall be reported for each zone. The form is to be filed in quintuplicate except on state land, where six copies are required. See Rule 1135.

INDICATE FORMATION TOPS IN CONFORMANCE WITH GEOGRAPHICAL SECTION OF STATE

Southeastern New Mexico			Northwestern New Mexico		
		LWR			
T. Anhy	T. Canyon	7336	T. Ojo Alamo	T. Penn. "B"	
T. Salt	T. Strawn	7780	T. Kirtland-Fruitland	T. Penn. "C"	
B. Salt	T. Atoka	8106	T. Pictured Cliffs	T. Penn. "D"	
T. Yates	T. Miss		T. Cliff House	T. Leadville	
T. 7 Rivers	T. Devonian		T. Menefee	T. Madison	
T. Queen	T. Silurian		T. Point Lookout	T. Elbert	
T. Grayburg	T. Montoya		T. Mancos	T. McCracken	
T. San Andres	T. Simpson		T. Gallup	T. Ignacio Qtzte	
T. Glorieta	T. McKee		Base Greenhorn	T. Granite	
T. Paddock	T. Elienburger		T. Dakota	T.	
T. Blinbry	T. Gr. Wash		T. Morrison	T.	
T. Tubb	T. Granite		T. Todilto	T.	
T. Drinkard	T. Delaware Sand		T. Entrada	T.	
T. Abo	T. Bone Springs		T. Wingate	T.	
T. Wolfcamp	T. Morrow Clastic	8273	T. Chinle	T.	
T. Penn.	T. Chester	8448	T. Permian	T.	
T. Cisco (Bough C)	T.	6447	T. Penn. "A"	T.	

FORMATION RECORD (Attach additional sheets if necessary)

From	To	Thickness in Feet	Formation	From	To	Thickness in Feet	Formation
0	367	367	Surface, gravel, caliche				
367	480	113	Red bed				
480	892	412	Red bed and lime				
892	1189	297	Red bed				
1189	1521	332	Lime				
1521	2250	729	Lime & Dolomite				
2250	3209	959	Lime				
3209	4108	899	Dolomite & Lime				
4108	6646	2538	Lime				
6646	7091	445	Lime and Shale				
7091	7806	715	Shale				
7806	8455	649	Lime and Shale				

DRILL STEM TESTS

Yates Petroleum Corporation
Mansau "EK" Fee Com #1
660' FNL & 1980' FWL of
Section 35-17S-25E
Eddy County, New Mexico

DST #1 6392-6680' - (Cisco) - TO 30", SI 75", TO 60", SI 120".
OP w/good blow. GTS in 22". Reopened, GTS immediately - 265 MCFPD.
Recovered: - 540' HGCM, 390' DM. Sampler: - 400#, 7.0 cfg and no fluid.
Pressures: HP 3009-2939, IFP 297-402, ISIP 2360, FFP 350-524,
FSIP 2360.

DST #2 7939-8028' (^{STRAW}~~Archo~~) - TO 30", SI 75", TO 60", SI 120".
Op w/fair blow, increasing, GTS 22" w/15# on 1/4" choke, 18# in 30".
Re-op, GTS immediately, 47# in 2" on 1/4" choke. Stabilized flow 47# on
1/4" choke. Recovered: - 510' SGCDM. Sampler:- 200#, 1.1 cfg, no fluid.
Pressures: - HP 3713-3713; IFP 105-70; ISIP 2868; FFP 105-110;
FSIP 2868. BHT 140 deg.

NE EXICO OIL CONSERVATION COMMISSIC
WELL LOCATION AND ACREAGE DEDICATION PLAT

Form C-102
Supersedes C-128
Effective 1-1-65

All distances must be from the outer boundaries of the Section.

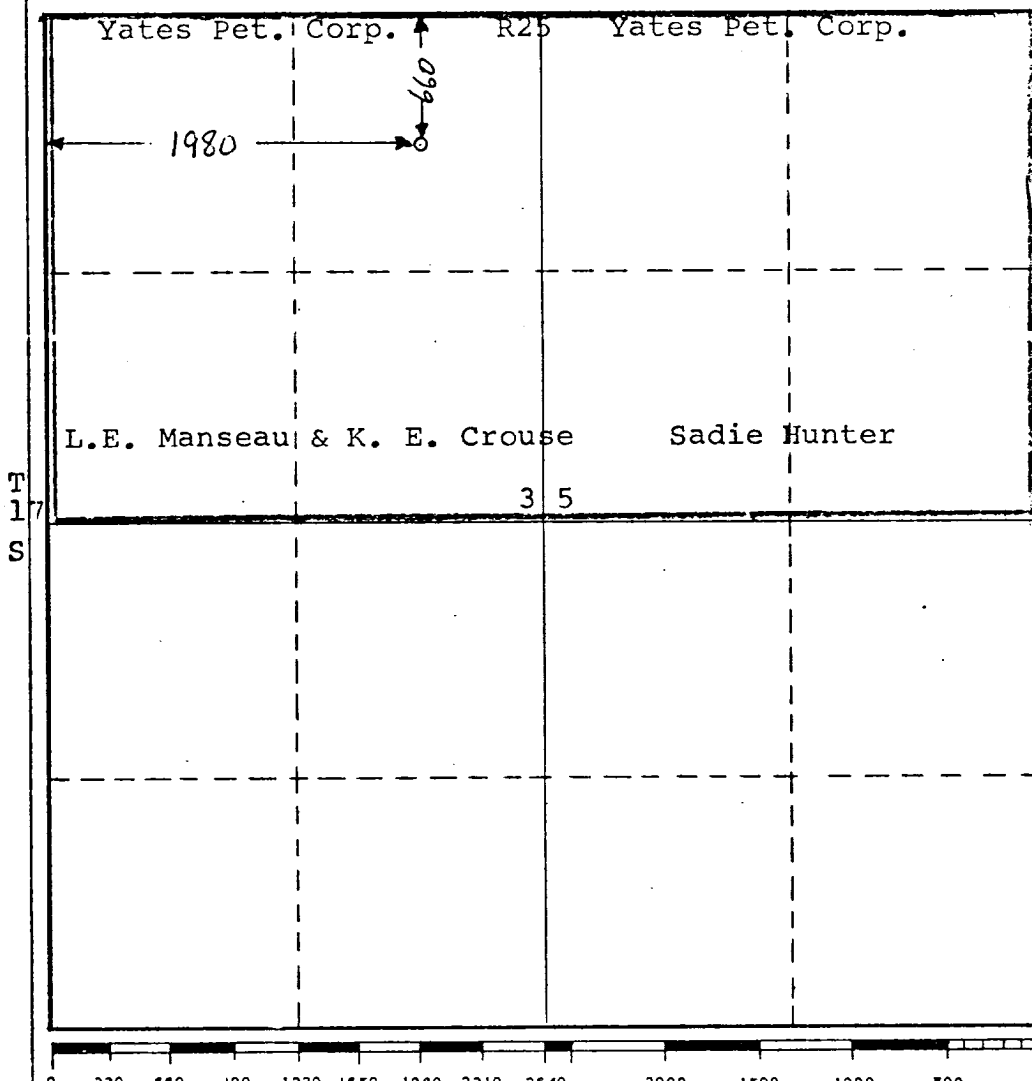
Operator Yates Petroleum Corporation			Lease Manseau "EK" Fee Com		Well No. 1
Unit Letter C	Section 35	Township 17 South	Range 25 East	County Eddy	
Actual Footage Location of Well: 660 feet from the North line and 1980 feet from the West line					
Ground Level Elev. 3501	Producing Formation Cisco		Pool Und. Cisco		Dedicated Acreage: 320 Acres

1. Outline the acreage dedicated to the subject well by colored pencil or hachure marks on the plat below.
2. If more than one lease is dedicated to the well, outline each and identify the ownership thereof (both as to working interest and royalty).
3. If more than one lease of different ownership is dedicated to the well, have the interests of all owners been consolidated by communitization, unitization, force-pooling, etc?

☒ Yes ☐ No If answer is "yes," type of consolidation Communitization

If answer is "no," list the owners and tract descriptions which have actually been consolidated. (Use reverse side of this form if necessary.)

No allowable will be assigned to the well until all interests have been consolidated (by communitization, unitization, forced-pooling, or otherwise) or until a non-standard unit, eliminating such interests, has been approved by the Commission.



CERTIFICATION	
I hereby certify that the information contained herein is true and complete to the best of my knowledge and belief.	
<i>Eddie M. Mahfood</i>	
Name	Eddie M. Mahfood
Position	Engineer
Company	Yates Pet. Corporation
Date	10-28-75
I hereby certify that the well location shown on this plat was plotted from field notes of actual surveys made by me or under my supervision, and that the same is true and correct to the best of my knowledge and belief.	
REFER TO ORIGINAL PLAT	
Date Surveyed	Dated 6-5-75
Registered Professional Engineer and/or Land Surveyor	
Certificate No.	

DIAGRAMMATIC SKETCH OF PROPOSED DUAL COMPLETION

YATES PETROLEUM CORP

Manseau EK Com No. 1

660 FNL 1980 FWL Sec 35-17s-25E

Eddy County, New Mexico

Spudded : 5-21-75

TD reached : 6-12-75

Strawn Compl. 6-23-75

U. Penn. Compl. 8-25-75

Top San Andres @ 792' KB

Base Artesian Zone @ 1126' KB

Top of Penn @ 6447' KB

U. PENN GAS ZONE

Flowed 7750 mcfpd

Top of Strawn @ 7780' KB

STRAWN GAS ZONE

Flowed 2250 mcfpd

6507' of 4 1/2" 11.6# K-55 LT & C and

1663' of 4 1/2" 10.5# K-55 LT & C csg.

Cmtd w/ 500 sx. CI H + 0.5% CFR-2 + 5% KCl

Tbg. Completed in Upper Penn.

17 1/2" hole to

12 3/4" 34# Csg set @ 361' KB

Cmtd. w/ 215 sx. circ. to surface

12" hole to 1226' KB

8 5/8" 24# set @ 1226' KB.

Cmtd. w/ 1050 sx. circ. to surface

Top of cement @ 6055' KB

4 1/2" x 2" Guiberson Uni VI Packer
set @ 6448' KB.

Perf 6618-6636, 0.34", 72 jets
Trtd w/ 2200g. 7 1/2% MSA & N₂

Retrieveable Bridge Plug @ 6665' KB

4 1/2" x 2" Baker Lockset Packer @ 7974' KB
w/ Blanking Plug; On-off Tool @ 7770' KB
(Profile 1.875" BP Receptacle).

Perf 8003-8319, 0.34", 64 jets

Trtd w/ 1500g. 7 1/2% MSA & N₂

SWF w/ 22000# 20/40 in 10000g. MSA + CO₂

PBTD @ 8150' KB (Float Collar)

Guide shoe @ 8190' KB

TD 8455' KB

