

**NEW MEXICO OIL CONSERVATION COMMISSION
WELL LOCATION AND ACREAGE DEDICATION PLAT**

Form C-102
Supersedes C-128
Effective 1-1-65

All distances must be from the outer boundaries of the Section.

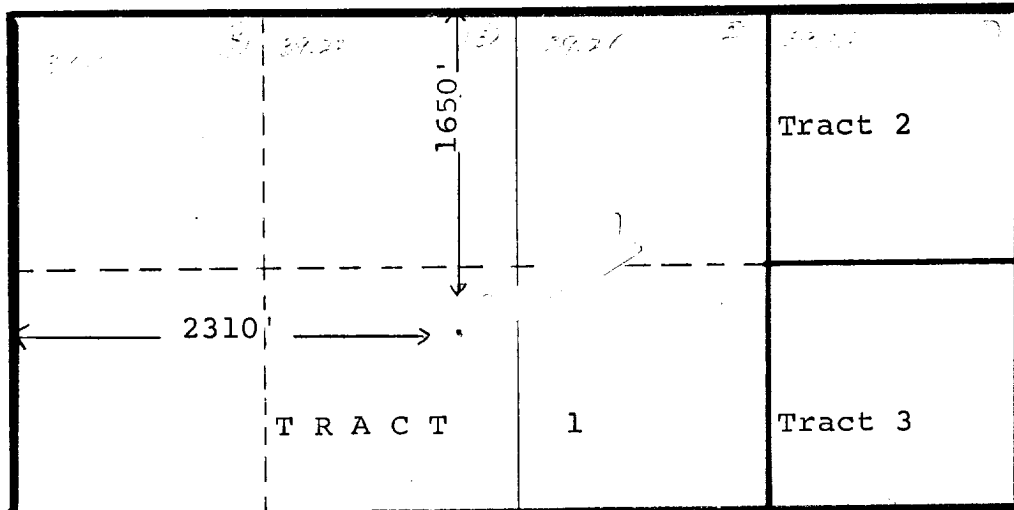
Operator Hondo Drilling Company			Lease SYN-Comm.		Well No. 1
Unit Letter F	Section 5	Township 17S	Range 26E	County Eddy	
Actual Footage Location of Well: 2310' feet from the West line and 1650 feet from the North line					
Ground Level Elev. 3366' Gr	Producing Formation Morrow	Pool Wilbeat		Dedicated Acreage: N/2 320.287 Acres	

1. Outline the acreage dedicated to the subject well by colored pencil or hachure marks on the plat below.
2. If more than one lease is dedicated to the well, outline each and identify the ownership thereof (both as to working interest and royalty).
3. If more than one lease of different ownership is dedicated to the well, have the interests of all owners been consolidated by communitization, unitization, force-pooling, etc?

☒ Yes ☐ No If answer is "yes," type of consolidation Communitization

If answer is "no," list the owners and tract descriptions which have actually been consolidated. (Use reverse side of this form if necessary.) _____

No allowable will be assigned to the well until all interests have been consolidated (by communitization, unitization, forced-pooling, or otherwise) or until a non-standard unit, eliminating such interests, has been approved by the Commission.



OWNERSHIP

Hondo Drilling Company	- 37.50%	W.I.
T.J. Sivley	- 37.50%	W.I.
Yates, Etal	- 12.50%	W.I.
Navajo Ref'g Co.	- 12.50%	W.I.

ROYALTY

T.J. Sivley, Smith Bros. Etal

CERTIFICATION

I hereby certify that the information contained herein is true and complete to the best of my knowledge and belief.

T.J. Sivley
Name

T.J. Sivley
Position

Vice Pres
Company

Hondo Drilling Company
Date

June 25, 1975

I hereby certify that the well location shown on this plat was plotted from field notes of actual surveys made by me or under my supervision, and that the same is true and correct to the best of my knowledge and belief.

Date Surveyed

5-22-75

Registered Professional Engineer
and/or Land Surveyor

N. Raymond Lamb
N. Raymond Lamb

Certificate No.

929

