

NO. OF COPIES RECEIVED

DISTRIBUTION		
SANTA FE		
FILE		
U.S.G.S.		
LAND OFFICE		
OPERATOR		

NEW MEXICO OIL CONSERVATION COMMISSION

30-015-21576  
Form C-101  
Revised 1-1-65

RECEIVED

JUN 25 1975

APPLICATION FOR PERMIT TO DRILL, DEEPEN, OR PLUG BACK

1a. Type of Work **ARTESIA, OFFICE**

b. Type of Well **DRILL** ☒ **DEEPEN** ☐ **PLUG BACK** ☐  
**OIL WELL** ☐ **GAS WELL** ☒ **OTHER** ☐ **SINGLE ZONE** ☒ **MULTIPLE ZONE** ☐

2. Name of Operator **Yates Petroleum Corporation**

3. Address of Operator **207 4th Street - Artesia, NM 88210**

4. Location of Well **UNIT LETTER E LOCATED 1980 FEET FROM THE North LINE**  
**AND 660 FEET FROM THE West LINE OF SEC. 30 TWP. 17S RGE. 26E NMPM**

5A. Indicate Type of Lease **STATE** ☐ **FEE** ☒

5. State Oil & Gas Lease No.

7. Unit Agreement Name

8. Farm or Lease Name **Nellor "EO" Com**

9. Well No. **1**

10. Field and Pool, or Wildcat **Wildcat**

12. County **Eddy**

19. Proposed Depth **approx. 8800'** 19A. Formation **Morrow** 20. Rotary or C.T. **Rotary**

21. Elevations (Show whether DF, RT, etc.) **3432' GR** 21A. Kind & Status Plug. Bond **Blanket** 21B. Drilling Contractor **Ard Drlg Co. Rig 6** 22. Approx. Date Work will start **60 days**

23. PROPOSED CASING AND CEMENT PROGRAM

SIZE OF HOLE	SIZE OF CASING	WEIGHT PER FOOT	SETTING DEPTH	SACKS OF CEMENT	EST. TOP
17 1/2"	13-3/8 or 12-3/4	48 or 34#	Approx 350'	200 sx	Circulate
12 1/4"	8-5/8"	24#	" 1300'	600 sx	Circulate
7-7/8"	5 1/2 or 4 1/2"	17# or 10.5#	" 8800'	250 sx	

Propose to drill to approx. 8800' and test the Morrow and intermediate horizons. Approx 350' of surface casing will be set to shut off gravel and cavings and intermediate casing will be set 100' below the Artesian Zone.

Mud Program: - Gel & LCM to 1300'. Fresh water to 5200', KCL water to 7900' and Low Fluid Loss Mud to Total Depth.

BOP Program: - BOP's will be installed on 8-5/8" casing and tested, pipe rams tested daily, blind rams on trips.  
(BOP Diagramatic attached).

APPROVAL VALID  
FOR 90 DAYS UNLESS  
DRILLING COMMENCED,

EXPIRES 9-26-75

IN ABOVE SPACE DESCRIBE PROPOSED PROGRAM: IF PROPOSAL IS TO DEEPEN OR PLUG BACK, GIVE DATA ON PRESENT PRODUCTIVE ZONE AND PROPOSED NEW PRODUCTIVE ZONE. GIVE BLOWOUT PREVENTER PROGRAM, IF ANY.

I hereby certify that the information above is true and complete to the best of my knowledge and belief.

Signed Eddie M. Ludy Title Engineer Date 6-25-75  
(This space for State Use)

APPROVED BY W. A. Gressett TITLE SUPERVISOR, DISTRICT II DATE JUN 26 1975  
CONDITIONS OF APPROVAL, IF ANY:

Cement must be circulated to  
surface behind 13 7/8" + 8 7/8" casing

Notify N.M.O.C.C. in sufficient  
time to witness cementing  
the 8 7/8" casing

NEW MEXICO OIL CONSERVATION COMMISSION  
WELL LOCATION AND ACREAGE DEDICATION PLAT

Form C-102  
Supersedes C-128  
Effective 1-1-65

All distances must be from the outer boundaries of the Section.

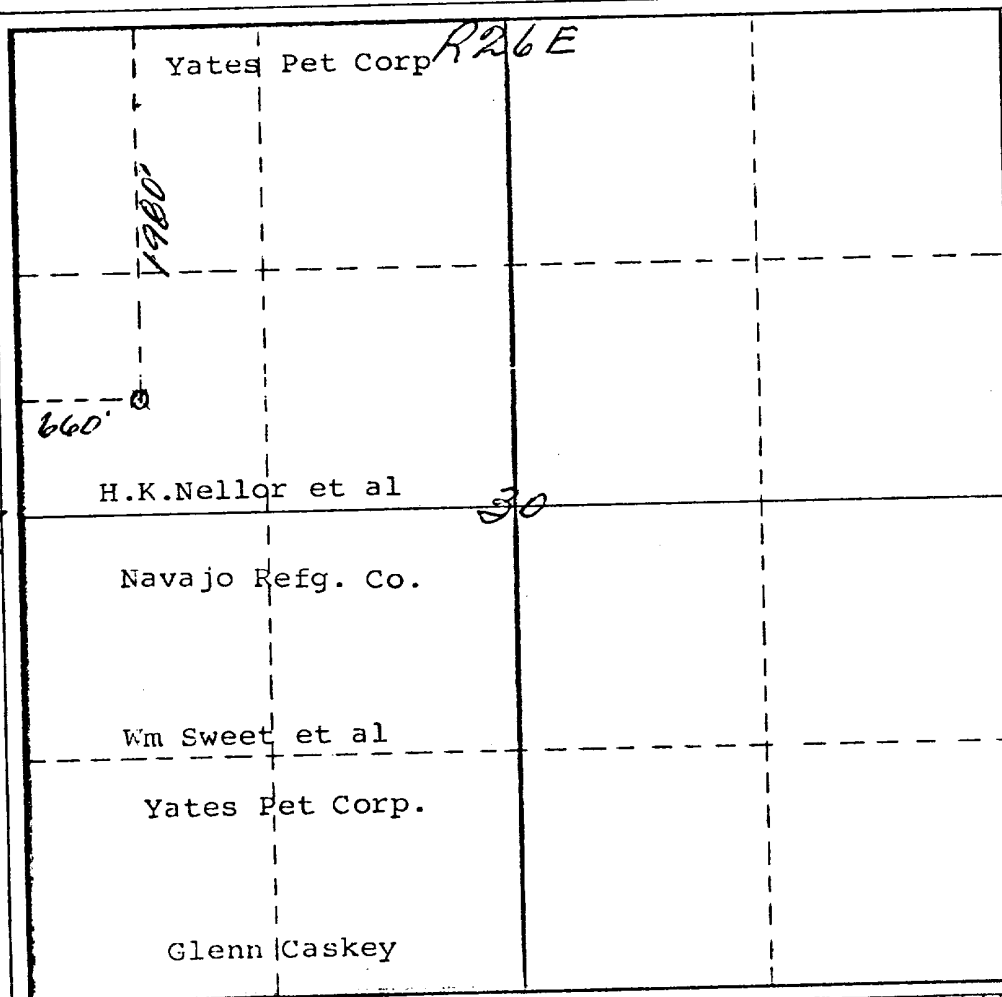
Operator <i>Yates Petroleum Corp</i>		Lease <i>Mellor "EO" Comm</i>		Well No. <i>1</i>	
Unit Letter <i>E</i>	Section <i>30</i>	Township <i>17 South</i>	Range <i>26 East</i>	County <i>Eddy</i>	
Actual Footage Location of Well: <i>1980</i> feet from the <i>North</i> line and <i>660</i> feet from the <i>West</i> line					
Ground Level Elev. <i>3432</i>	Producing Formation <i>Morrow</i>		Pool <i>Wildcat</i>	Dedicated Acreage: <i>320</i> Acres	

1. Outline the acreage dedicated to the subject well by colored pencil or hatchure marks on the plat below.
2. If more than one lease is dedicated to the well, outline each and identify the ownership thereof (both as to working interest and royalty).
3. If more than one lease of different ownership is dedicated to the well, have the interests of all owners been consolidated by communitization, unitization, force-pooling, etc?

☒ Yes ☐ No If answer is "yes," type of consolidation Communitized

If answer is "no," list the owners and tract descriptions which have actually been consolidated. (Use reverse side of this form if necessary.)

No allowable will be assigned to the well until all interests have been consolidated (by communitization, unitization, forced-pooling, or otherwise) or until a non-standard unit, eliminating such interests, has been approved by the Commission.



CERTIFICATION

I hereby certify that the information contained herein is true and complete to the best of my knowledge and belief.

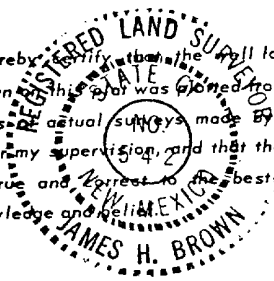
*Eddie M. Mahfood*  
Name  
Eddie M. Mahfood

Position  
Engineer

Company  
Yates Pet. Corp.

Date  
6-25-75

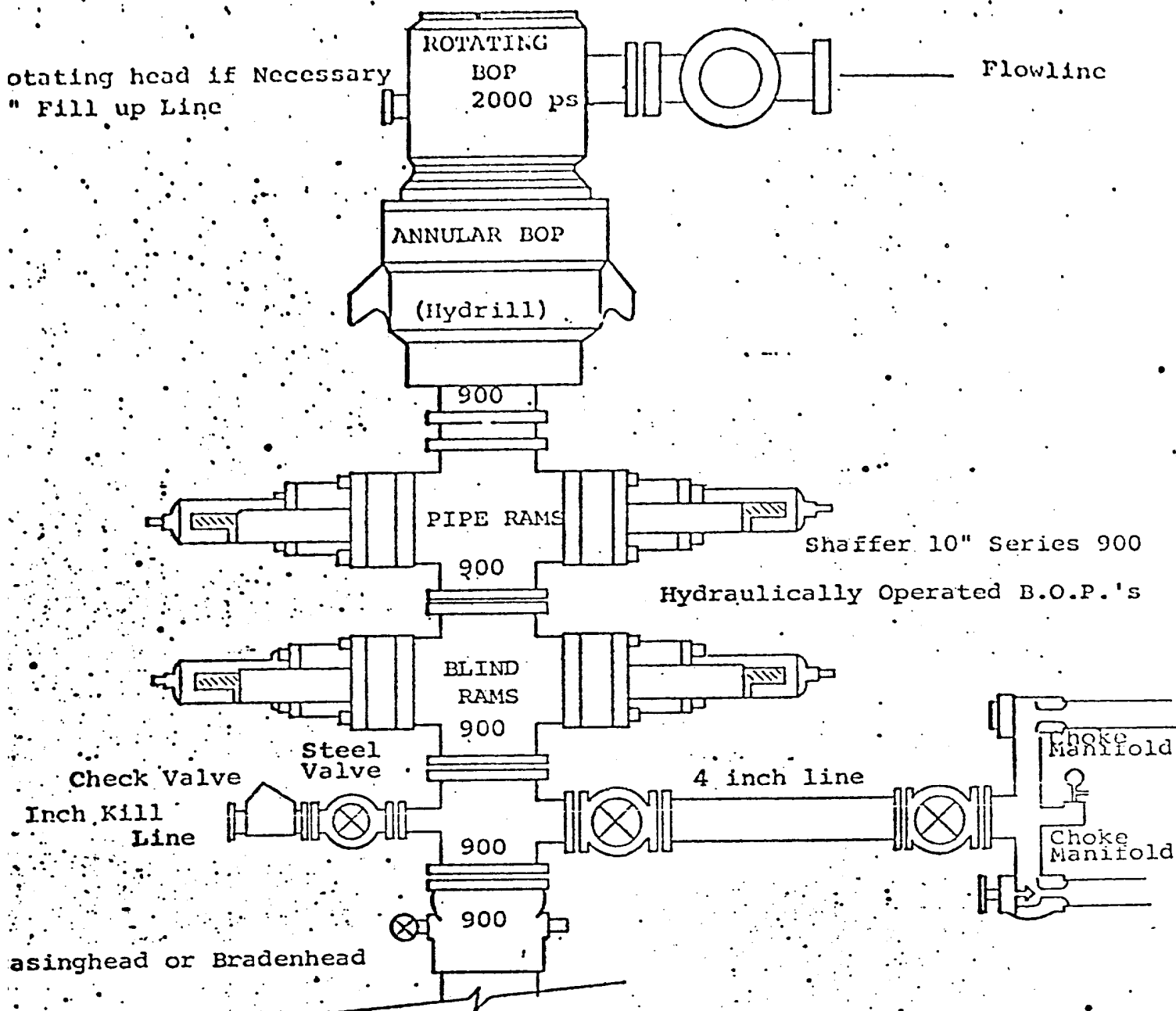
I hereby certify that the well location shown on this plat was obtained from field notes, actual surveys made by me or under my supervision, and that the same is true and correct to the best of my knowledge and belief.



Date Surveyed  
*June 24th 1975*

Registered Professional Engineer  
and/or Land Surveyor

*James H. Brown*  
Certificate No. *542*



THE FOLLOWING CONSTITUTE MINIMUM BLOWOUT PREVENTER REQUIREMENTS

1. All preventers to be hydraulically operated with secondary manual controls installed prior to drilling out from under casing.
2. Choke outlet to be a minimum of 4" diameter.
3. Kill line to be of all steel construction of 2" minimum diameter.
4. All connections from operating manifolds to preventers to be all steel hole or tube a minimum of one inch in diameter.
5. The available closing pressure shall be at least 15% in excess of that required with sufficient volume to operate the B.O.P.'s.
6. All Connections to and from preventer to have a pressure rating equivalent to that of the B.O.P.'s.
7. Inside blowout preventer to be available on rig floor.
8. Operating controls located a safe distance from the rig floor.
9. Hole must be kept filled on trips below intermediate casing. Operator not responsible for blowouts resulting from not keeping hole full.
10. D.P. float must be installed and used below zone of first gas intrusion.