

UNITED STATES
DEPARTMENT OF THE INTERIOR
GEOLOGICAL SURVEY

Copy to SF
30-015-21589

APPLICATION FOR PERMIT TO DRILL, DEEPEN, OR PLUG BACK

1a. TYPE OF WORK

DRILL ☒DEEPEN ☐PLUG BACK ☐

b. TYPE OF WELL

OIL
WELL ☒GAS
WELL ☐OTHER ☐SINGLE
ZONE ☒MULTIPLE
ZONE ☐

2. NAME OF OPERATOR

Murphy Minerals Corporation ✓

3. ADDRESS OF OPERATOR c/o Tom Boyd, Petroleum Bldg-Tower Suite,
Roswell, New Mexico 882014. LOCATION OF WELL (Report location clearly and in accordance with any State requirements.)
At surface

1650 FWL, 990 FSL

At proposed prod. zone

330 FEL, 330 FNL of Unit N

14. DISTANCE IN MILES AND DIRECTION FROM NEAREST TOWN OR POST OFFICE*

4.5 miles WNW of Maljamar, New Mexico

15. DISTANCE FROM PROPOSED*

LOCATION TO NEAREST
PROPERTY OR LEASE LINE, FT.
(Also to nearest d.l.g. unit line, if any)330' FEL, FNL
of Unit N

16. NO. OF ACRES

560

17. NO. OF ACRES ASSIGNED
TO THIS WELL

40

18. DISTANCE FROM PROPOSED LOCATION*

TO NEAREST WELL, DRILLING, COMPLETED,
OR APPLIED FOR, ON THIS LEASE, FT.

933.4'

19. PROPOSED DEPTH

4080'

20. ROTARY OR CABLE TOOLS

Rotary

21. ELEVATIONS (SHOW WHETHER DF, RT, GR, etc.)

4168' G.L.

22. APPROX. DATE WORK WILL START*

July 20, 1975

23.

PROPOSED CASING AND CEMENTING PROGRAM

SIZE OF HOLE	SIZE OF CASING	WEIGHT PER FOOT	SETTING DEPTH	QUANTITY OF CEMENT
12 1/4	8 5/8	28.0	400	330 ft ³
7	4 1/2	9.5	4080	As Required

- 1) Either core, log and test or log then test prior to running long string.
- 2) This well is being drilled in Unit N which presently has the Robinson #4 well as a producer, however this well has a 5" liner (not cemented) from 3830' to 4015' and can not be re-completed or worked over due to junk in the hole. Another liner cannot be effectively run due to enlarged shot hole in pay zones. #4 will be utilized in water-flood or abandoned.

RECEIVED
JUL 8 1975
U. S. GEOLOGICAL SURVEY
ARTESIA, NEW MEXICO

IN ABOVE SPACE DESCRIBE PROPOSED PROGRAM: If proposal is to deepen or plug back, give data on present productive zone and proposed new productive zone. If proposal is to drill or deepen directionally, give pertinent data on subsurface locations and measured and true vertical depths. Give blowout preventer program, if any.

24.

SIGNED

J. M. Boyd

TITLE Agent

DATE July 3, 1975

(This space for Federal or State office use)

APPROVAL DATE

TITLE

DATE

APPROVED
JUL 15 1975
J. L. BECKWITH
ACTING DISTRICT ENGINEER

THIS APPROVAL IS VOID IF OPERATIONS
ARE NOT COMMENCED WITHIN 3 MONTHS.
EXPIRES OCT 17 1975

*See Instructions On Reverse Side

NEW MEXICO OIL CONSERVATION COMMISSION
WELL LOCATION AND ACREAGE DEDICATION PLAT

Form C-102
Supersedes C-128
Effective 1-1-65

All distances must be from the outer boundaries of the Section

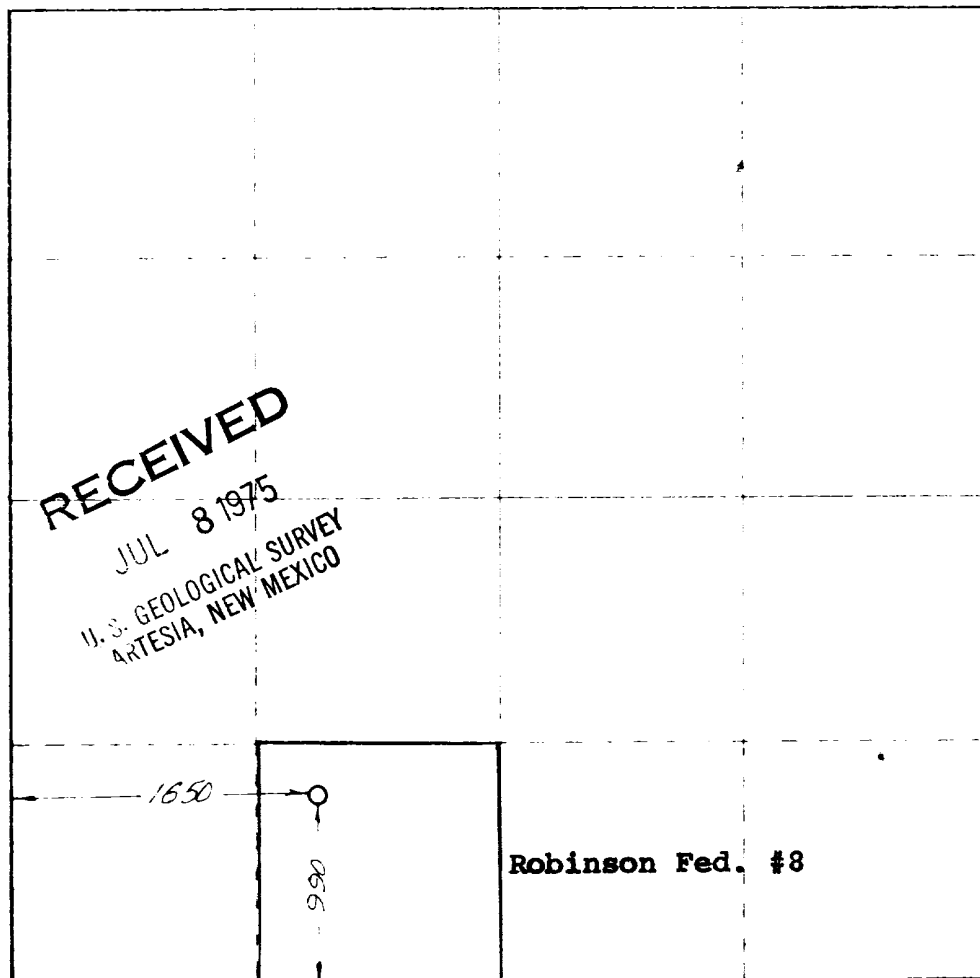
Operator MURPHY MINERALS CORP.			Owner ROBINSON FEDERAL			Well No. 8
North letter N	Section 25	Range 16 S.	Meridian 31 E.	County Eddy County		
Acres of Acreage Dedication Well 1650 feet from the WEST line and 990 feet from the SOUTH line						
Acres of Acreage Dedication Well 4168	Producing Formation Metex, Premier, Lovington Grayburg-Jackson				Acres of Acreage Dedication 40	

- Outline the acreage dedicated to the subject well by colored pencil or hatchure marks on the plat below.
- If more than one lease is dedicated to the well, outline each and identify the ownership thereof (both as to working interest and royalty).
- If more than one lease of different ownership is dedicated to the well, have the interests of all owners been consolidated by communitization, unitization, force-pooling, etc?

Yes ☐ No ☐ If answer is "yes," type of consolidation _____

If answer is "no," list the owners and tract descriptions which have actually been consolidated. (Use reverse side of this form if necessary.) _____

No allowable will be assigned to the well until all interests have been consolidated (by communitization, unitization, force-pooling, or otherwise) or until a non-standard unit, eliminating such interests, has been approved by the Commission.



CERTIFICATION

I hereby certify that the information contained herein is true and complete to the best of my knowledge and belief.

T. M. Boyd
T. M. Boyd
Agent

Murphy Minerals Corp.

July 7, 1975

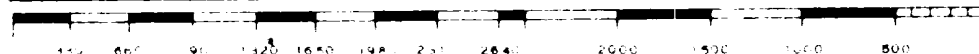
I hereby certify that the location shown on this plat was plotted from field notes of a location survey made by me or under my supervision, and that the same is true and correct to the best of my knowledge.



Date of Survey **July 2, 1975**

Registered Professional Engineer
and Land Surveyor

Herschel Jones
Herschel Jones
3640



DEVELOPMENT PLAN FOR SURFACE USE

UNITED STATES GEOLOGICAL SURVEY

Southern Rocky Mountain Area

Date: July 7, 1975

Well Robinson Fed. #8 Location SE/4 SW/4 Sec. 25, T16S, R31E

1. Existing roads including location of the exit from the main highway. See attached maps.
2. Planned access roads. See attached maps.
3. Location of existing wells. See attached maps.
4. Lateral roads to well locations. See attached maps.
12' wide, approximately 400' long.
5. Location of tank batteries and flow lines. See attached maps.
Utilize present tank battery site. Flow lines directly to tank battery.
6. Location and type of water supply (rivers, creeks, lakes, ponds, well, etc.).
Water Flood Associates, Inc. water line approximately 450' SE of this location. Ogalla water.
7. Methods for handling waste disposal. A separate waste disposal pit will be dug to bury trash not less than two feet.
8. Location of camps. None
9. Location of airstrips. None

RECEIVED
JUL 8 1975
U. S. GEOLOGICAL SURVEY
ARTESIA, NEW MEXICO

10. Location of layout to include position of the rig, mud tanks, reserve pits, burn pits, pipe racks, etc. WEK Drilling Rig 2. See attached plat.
11. Plans for restoration of the surface. All surface on roads and locations not utilized in producing this well will be ripped and re-seeded.
12. Any other information that may be used in evaluating the impact on environment. Include general description of the topography, vegetation, and other aspects of the area. This is in an area of development with plans to initiate a water-flood. No additional.

Company MURPHY MINERALS CORPORATION

Representative T. M. Boyd

Phone: Office 623-6044 Home 623-6400

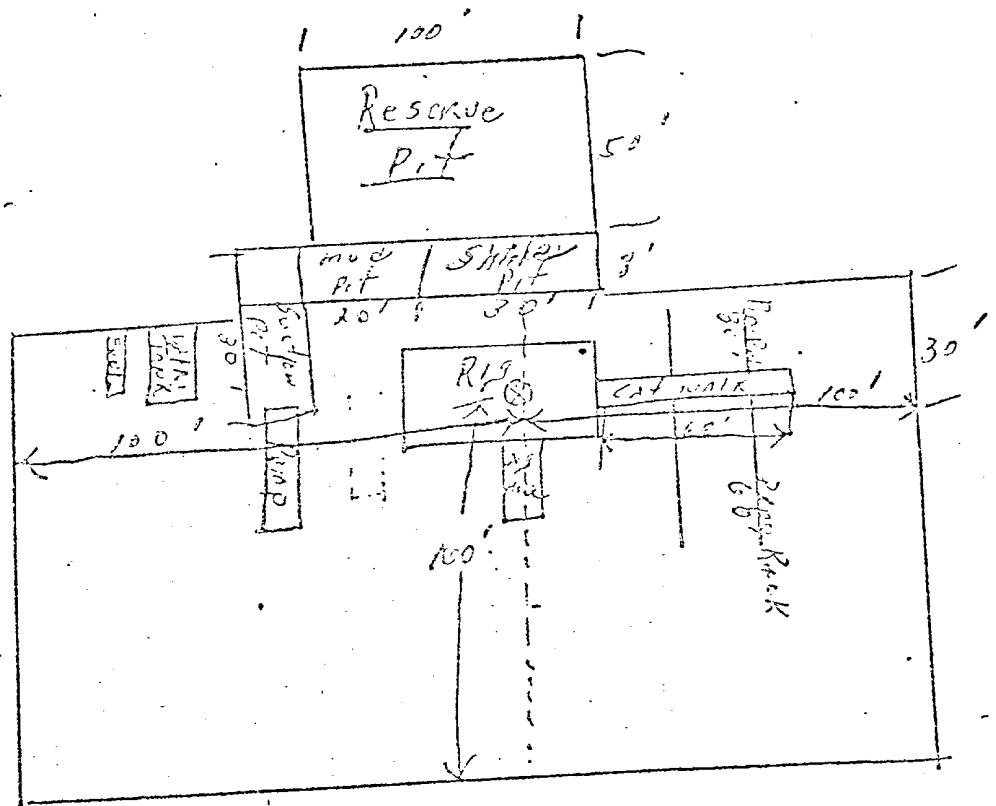
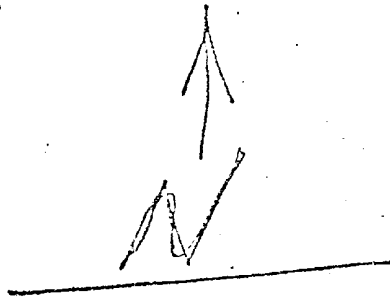
Boyd Operating Company

Address Petroleum Building - Tower Suite

Roswell, New Mexico 88201

RECEIVED
JUL 8 1975
U. S. GEOLOGICAL SURVEY
ARTESIA, NEW MEXICO

WELL DRILLING
Rig 1 Location & Pit Specs.



Schaeffer Type E 10" Series 900 Hydraulic BOP. The waste and debris from this well will be disposed of in a reserve pit and covered up.

RECEIVED

JUL 6 1975

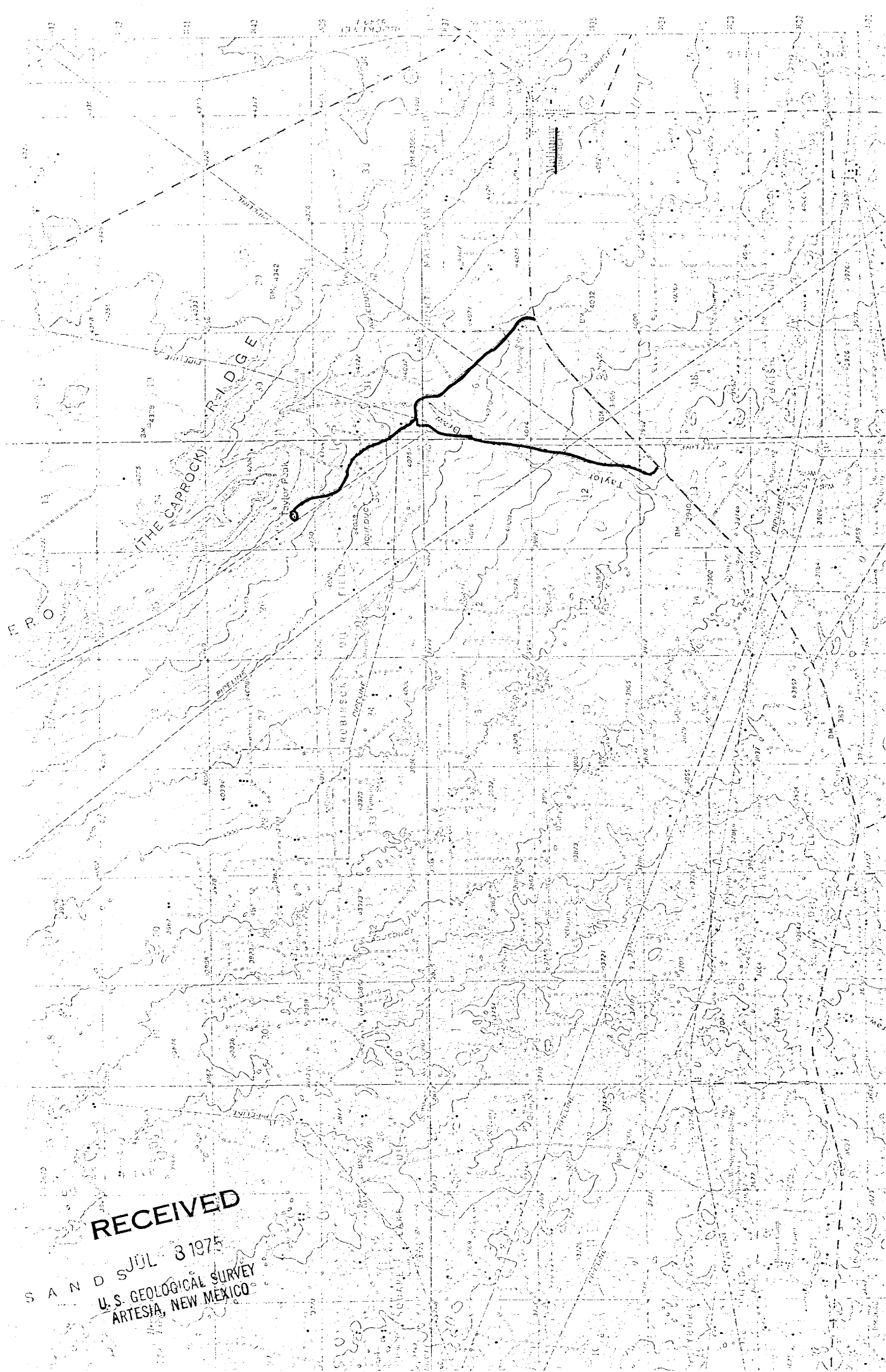
U. S. GEOLOGICAL SURVEY
 ARTESIA, NEW MEXICO

MURPHY MINE U.S. CORPORATION
ACCESS ROADS ROBINSON FED. #8

RECEIVED

S A N D JUL 3 1975

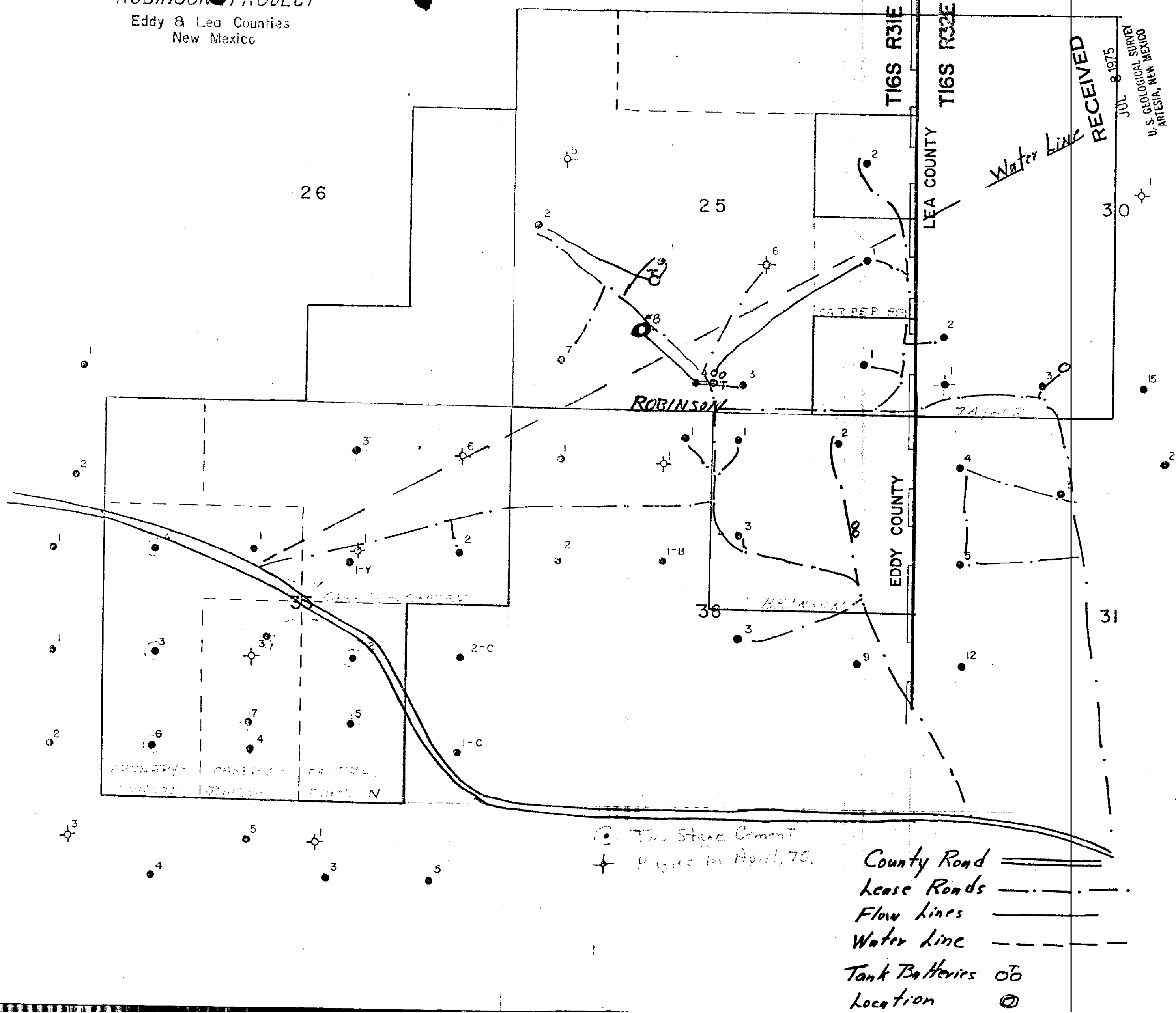
U.S. GEOLOGICAL SURVEY
ARTESIA, NEW MEXICO



MURPHY MINERALS CORP.

ROBINSON PROJECT

Eddy & Lea Counties
New Mexico



RECEIVED

JUL 8 1975

U.S. GEOLOGICAL SURVEY
ARTESIA, NEW MEXICO

Water Line

ROBINSON

EDDY COUNTY

LEA COUNTY

T16S R31E

T16S R32E

Two Stage Cement
Drilled in April, 75

County Road
Lease Roads
Flow lines
Water line
Tank Batteries
Location