

NO. OF COPIES RECEIVED	6
DISTRIBUTION	
SANTA FE	
FILE	
U.S.G.S.	
LAND OFFICE	
OPERATOR	

NEW MEXICO OIL CONSERVATION COMMISSION

**RECEIVED**

**SEP 18 1975**

30-015-21632  
Form C-101  
Revised 1-1-65

5A. Indicate Type of Lease STATE <input checked="" type="checkbox"/> FEE <input type="checkbox"/>
5. State Oil & Gas Lease No. <b>B-2071</b>
7. Unit Agreement Name
8. Farm or Lease Name <b>N.G. Phillips State</b>
9. Well No. <b>16</b>
10. Field and Pool, or Wildcat <b>East Empire Yates SR</b>
12. County <b>Eddy</b>
19. Proposed Depth <b>approx. 900'</b>
19A. Formation <b>Seven Rivers</b>
20. Rotary or C.T. <b>C. T.</b>
21. Elevations (Show whether DF, RT, etc.) <b>3659 G. L.</b>
21A. Kind & Status Plug. Bond <b>Statewide active</b>
21B. Drilling Contractor <b>Jenkins Bros Drilling Co</b>
22. Approx. Date Work will start <b>9-18-75</b>

APPLICATION FOR PERMIT TO DRILL, DEEPEN, OR PLUG BACK

1a. Type of Work DRILL <input checked="" type="checkbox"/> DEEPEN <input type="checkbox"/> PLUG BACK <input type="checkbox"/>
b. Type of Well OIL WELL <input checked="" type="checkbox"/> GAS WELL <input type="checkbox"/> OTHER <input type="checkbox"/> SINGLE ZONE <input type="checkbox"/> MULTIPLE ZONE <input type="checkbox"/>
2. Name of Operator <b>Marbob Energy Corporation</b>
3. Address of Operator <b>P. O. Box 304, Artesia, New Mexico 88210</b>
4. Location of Well UNIT LETTER <b>F</b> LOCATED <b>2310</b> FEET FROM THE <b>North</b> LINE AND <b>1650</b> FEET FROM THE <b>West</b> LINE OF SEC. <b>27</b> TWP. <b>17 S</b> RGE. <b>28 E</b> NMPM
19. Proposed Depth <b>approx. 900'</b>
19A. Formation <b>Seven Rivers</b>
20. Rotary or C.T. <b>C. T.</b>
21. Elevations (Show whether DF, RT, etc.) <b>3659 G. L.</b>
21A. Kind & Status Plug. Bond <b>Statewide active</b>
21B. Drilling Contractor <b>Jenkins Bros Drilling Co</b>
22. Approx. Date Work will start <b>9-18-75</b>

23.

PROPOSED CASING AND CEMENT PROGRAM

SIZE OF HOLE	SIZE OF CASING	WEIGHT PER FOOT	SETTING DEPTH	SACKS OF CEMENT	EST. TOP
10"	7"	20 lb	500'		surface
6 1/4"	4 1/2"	10 lb	885'	225	surface

We propose to drill to approximately 500' and run 7" drilling string of casing, drill on to 885', pull 7" and set 4 1/2" production string with 225 sacks cement, and complete well in Seven Rivers formation. We do not anticipate gas as these depths and will not set up a blowout preventer program at this time.

**APPROVAL VALID  
FOR 90 DAYS UNLESS  
DRILLING COMMENCED**

**EXPIRES 12-18-75**

IN ABOVE SPACE DESCRIBE PROPOSED PROGRAM: IF PROPOSAL IS TO DEEPEN OR PLUG BACK, GIVE DATA ON PRESENT PRODUCTIVE ZONE AND PROPOSED NEW PRODUCTIVE ZONE. GIVE BLOWOUT PREVENTER PROGRAM, IF ANY.

I hereby certify that the information above is true and complete to the best of my knowledge and belief.

Signed *Scotty Hammond* Title Agent Date 9/18/75

(This space for State Use)

APPROVED BY *LeRoy McManis* TITLE OIL AND GAS INSPECTOR DATE SEP 18 1975

CONDITIONS OF APPROVAL, IF ANY:

Cement must be circulated to  
surface behind 4 1/2" casing

Notify N.M.O.C.C. in sufficient  
time to witness cementing

NEW MEXICO OIL CONSERVATION COMMISSION  
WELL LOCATION AND ACREAGE DEDICATION PLAT

Form C-102  
Supersedes C-128  
Effective 1-1-65

All distances must be from the outer boundaries of the Section.

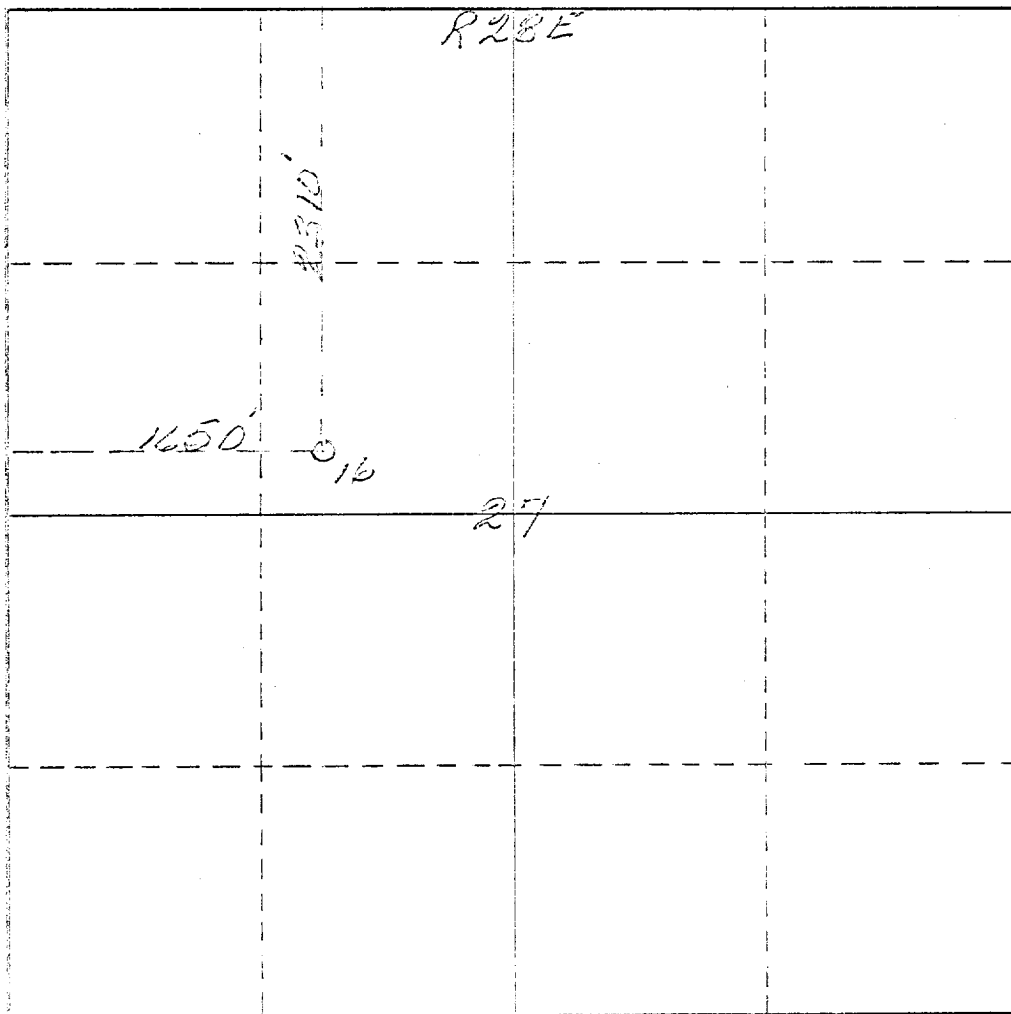
Operator <i>Marbob Energy Corp</i>			Lease <i>N.G. Phillips State</i>			Well No. <i>16</i>		
Unit Letter <i>F</i>	Section <i>27</i>	Township <i>17 South</i>	Range <i>25 East</i>	County <i>Eddy</i>				
Actual Footage Location of Well: <i>2310</i> feet from the <i>North</i> line and <i>1650</i> feet from the <i>West</i> line								
Ground Level Elev. <i>3659</i>		Producing Formation <i> </i>		Pool <i> </i>		Dedicated Acreage: <i>40</i> Acres		

1. Outline the acreage dedicated to the subject well by colored pencil or hachure marks on the plat below.
2. If more than one lease is dedicated to the well, outline each and identify the ownership thereof (both as to working interest and royalty).
3. If more than one lease of different ownership is dedicated to the well, have the interests of all owners been consolidated by communitization, unitization, force-pooling, etc?

☐ Yes   ☐ No   If answer is "yes," type of consolidation \_\_\_\_\_

If answer is "no," list the owners and tract descriptions which have actually been consolidated. (Use reverse side of this form if necessary.) \_\_\_\_\_

No allowable will be assigned to the well until all interests have been consolidated (by communitization, unitization, forced-pooling, or otherwise) or until a non-standard unit, eliminating such interests, has been approved by the Commission.



CERTIFICATION

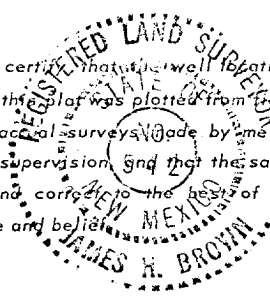
I hereby certify that the information contained herein is true and complete to the best of my knowledge and belief.

Name  
*Dorothy Hemmard*  
Position  
*Agent*

Company  
*Marbob Energy Corp.*

Date  
*Sept. 18, 1975*

I hereby certify that the well location shown on this plat was plotted from field notes of actual surveys made by me or under my supervision, and that the same is true and correct to the best of my knowledge and belief.



Date Surveyed  
*August 28<sup>th</sup> 1975*  
Registered Professional Engineer  
and/or Land Surveyor

*James H. Brown*  
Certificate No. *542*

0 550 650 90 1320 1650 1980 2310 2640 2000 1500 1000 500 0