

NO. OF COPIES RECEIVED	
DISTRIBUTION	
SANTA FE	
FILE	✓
U.S.G.S.	
LAND OFFICE	
OPERATOR	

NEW MEXICO OIL CONSERVATION COMMISSION

RECEIVED

SEP 24 1975

30-015-21637

Form C-101
Revised 1-1-65

APPLICATION FOR PERMIT TO DRILL, DEEPEN, OR PLUG BACK **C. C.**

1a. Type of Work DRILL <input checked="" type="checkbox"/> DEEPEN <input type="checkbox"/> PLUG BACK <input type="checkbox"/>		5A. Indicate Type of Lease STATE <input type="checkbox"/> FEE <input checked="" type="checkbox"/>	
b. Type of Well OIL WELL <input checked="" type="checkbox"/> GAS WELL <input type="checkbox"/> OTHER <input type="checkbox"/>		5. State Oil & Gas Lease No.	
2. Name of Operator Yates Petroleum Corporation ✓		7. Unit Agreement Name	
3. Address of Operator 207 South 4th Street - Artesia, NM 88210		8. Firm or Lease Name Smith "EB"	
4. Location of Well UNIT LETTER <u>F</u> LOCATED <u>1650</u> FEET FROM THE <u>North</u> LINE AND <u>1650</u> FEET FROM THE <u>West</u> LINE OF SEC. <u>13</u> TWP. <u>17S</u> RGE. <u>25E</u> NMPM		9. Well No. 1	
		10. Field and Pool, or Wildcat Eagle Creek (S.A.)	
		12. County Eddy	
		19. Proposed Depth Approx. 1500'	
		19A. Formation San Andres	
		20. Rotary or C.T. Rotary	
21. Elevations (Show whether DF, RT, etc.) 3466'		21A. Kind & Status Plug. Bond Blanket	
		21B. Drilling Contractor Byrd Drilling Co.	
		22. Approx. Date Work will start As soon as approved	

PROPOSED CASING AND CEMENT PROGRAM

SIZE OF HOLE	SIZE OF CASING	WEIGHT PER FOOT	SETTING DEPTH	SACKS OF CEMENT	EST. TOP
14-3/4"	10-3/4"	32#	Approx. 300'	175 sacks	Circulate
9-7/8"	7"	20#	" 1180'	450 sacks	Circulate
6-1/4"	4 1/2" & 5 1/2" (tapered)	9.5 & 15.5#	" 1500'	125 sacks	

Propose to drill a San Andres test. Approx. 300' of surface casing will be set to shut off gravel and caving, and 7" casing will be set 100' below the Artesian Zone. A tapered string will be set for production, perforated and Sand Frac' as needed for production.

Mud Program: - FW gel and LCM to 1180', FW to TD.

BOP Program: - BOP's will be installed on the intermediate casing and tested daily.

Location is outside city limits, 310' south of West Grand Avenue and more than 600' from the nearest residence.

APPROVAL VALID
FOR 90 DAYS UNLESS
DRILLING COMMENCED,

IN ABOVE SPACE DESCRIBE PROPOSED PROGRAM: IF PROPOSAL IS TO DEEPEN OR PLUG BACK, GIVE DATA ON PRESENT PRODUCTIVE ZONE AND PROPOSED NEW PRODUCTIVE ZONE. GIVE BLOWOUT PREVENTER PROGRAM, IF ANY.

I hereby certify that the information above is true and complete to the best of my knowledge and belief.

Signed Eddy H. Gressett Title Engineer Date 9-19-75

(This space for State Use)

APPROVED BY W. A. Gressett TITLE SUPERVISOR, DISTRICT II DATE SEP 26 1975

CONDITIONS OF APPROVAL, IF ANY:

Cement must be circulated to
surface behind 10 3/4" casing

Notify N.M.O.C.C. in sufficient
time to witness cementing
the 7" casing

NEW MEXICO OIL CONSERVATION COMMISSION
WELL LOCATION AND ACREAGE DEDICATION PLAT

Form C-102
Supersedes C-128
Effective 1-1-65

All distances must be from the outer boundaries of the Section.

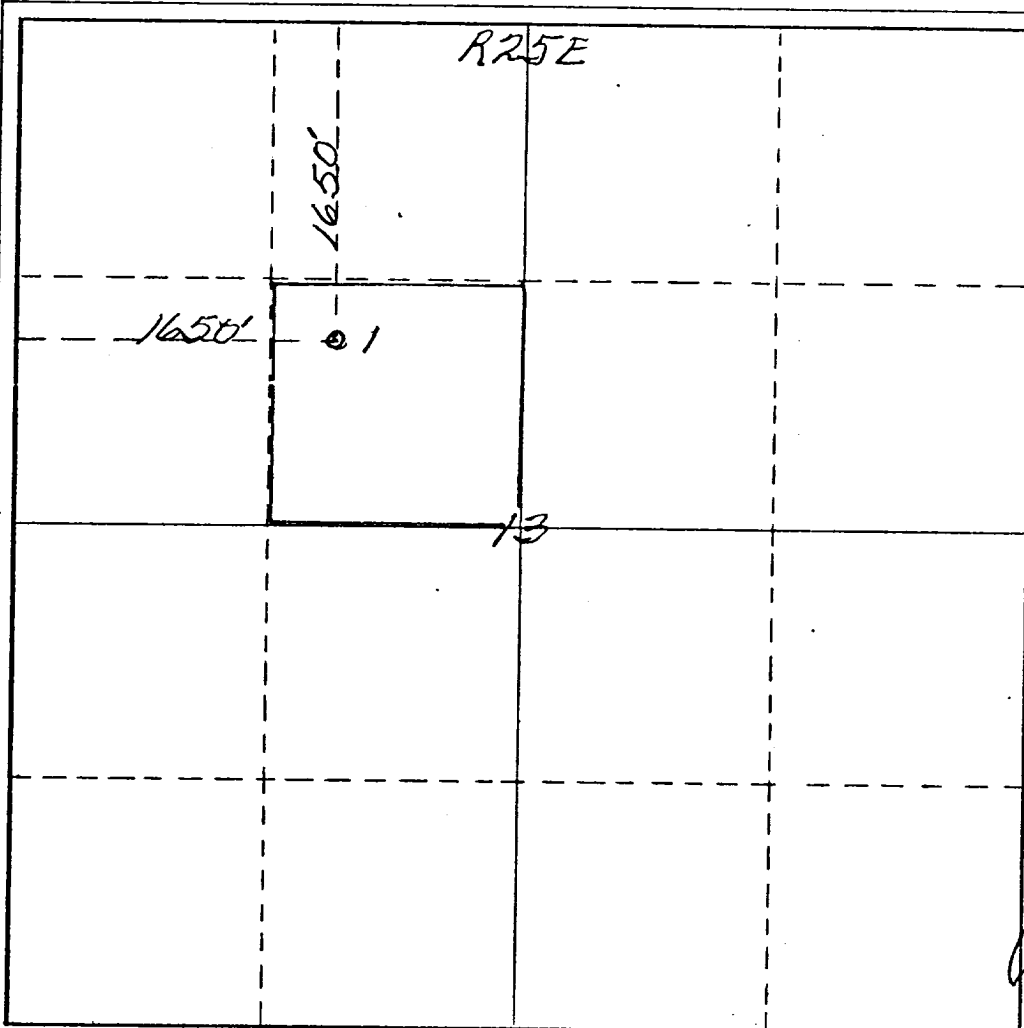
Operator <i>Yates Petroleum Corp</i>		Lease <i>Smith "EB"</i>		Well No. <i>1</i>	
Unit Letter <i>F</i>	Section <i>13</i>	Township <i>17 South</i>	Range <i>25 East</i>	County <i>Eddy</i>	
Actual Footage Location of Well: <i>1650</i> feet from the <i>North</i> line and <i>1650</i> feet from the <i>West</i> line					
Ground Level Elev. <i>3466</i>	Producing Formation <i>San Andres</i>		Pool <i>Eagle Creek (S.A.)</i>	Dedicated Acreage: <i>40</i> Acres	

1. Outline the acreage dedicated to the subject well by colored pencil or hachure marks on the plat below.
2. If more than one lease is dedicated to the well, outline each and identify the ownership thereof (both as to working interest and royalty).
3. If more than one lease of different ownership is dedicated to the well, have the interests of all owners been consolidated by communitization, unitization, force-pooling, etc?

☐ Yes ☐ No If answer is "yes," type of consolidation _____

If answer is "no," list the owners and tract descriptions which have actually been consolidated. (Use reverse side of this form if necessary.) _____

No allowable will be assigned to the well until all interests have been consolidated (by communitization, unitization, forced-pooling, or otherwise) or until a non-standard unit, eliminating such interests, has been approved by the Commission.



CERTIFICATION

I hereby certify that the information contained herein is true and complete to the best of my knowledge and belief.

Eddie M. Mahfood

Name
Eddie M. Mahfood

Position
Engineer

Company
Yates Pet. Corporation

Date
9-19-75

I hereby certify that the well location shown on this plat was plotted from field notes of actual surveys made by me or under my supervision, and that the same is true and correct to the best of my knowledge and belief.

James H. Brown
Date Surveyed
Nov 7 1974

Registered Professional Engineer
and/or Land Surveyor

Certificate No. *542*

