

NO. OF COPIES RECEIVED	
DISTRIBUTION	
SANTA FE	
FILE	
U.S.G.S.	
LAND OFFICE	
OPERATOR	

NEW MEXICO OIL CONSERVATION COMMISSION

RECEIVED

OCT 1 1975

30-015-21642

Form C-101
Revised 1-1-65

5A. Indicate Type of Lease

STATE ☐ FEE ☒

5. State Oil & Gas Lease No.

APPLICATION FOR PERMIT TO DRILL, DEEPEN, OR PLUG BACK

1a. Type of Work		1b. Type of Well		2. Name of Operator		3. Address of Operator		4. Location of Well		7. Unit Agreement Name		8. Farm or Lease Name		9. Well No.		10. Field and Pool, or Wildcat		12. County	
DRILL <input checked="" type="checkbox"/> DEEPEN <input type="checkbox"/> PLUG BACK <input type="checkbox"/>		OIL WELL <input checked="" type="checkbox"/> GAS WELL <input type="checkbox"/> OTHER <input type="checkbox"/>		Yates Petroleum Corporation		207 South 4th Street - Artesia, NM 88210		UNIT LETTER <u>G</u> LOCATED <u>2310</u> FEET FROM THE <u>North</u> LINE				J Lazy J		11		Eagle Creek S.A.		Eddy	
								AND <u>2310</u> FEET FROM THE <u>East</u> LINE OF SEC. <u>22</u> TWP. <u>17S</u> RGE. <u>25E</u> NMPM											
										19. Proposed Depth		19A. Formation		20. Rotary or C.T.					
										Approx 1500'		San Andres		Rotary					
21. Elevations (Show whether DF, RT, etc.)		21A. Kind & Status Plug. Bond		21B. Drilling Contractor		22. Approx. Date Work will start													
3533' GR		Blanket		Byrd Drilling Co.		As soon as approved													

PROPOSED CASING AND CEMENT PROGRAM

SIZE OF HOLE	SIZE OF CASING	WEIGHT PER FOOT	SETTING DEPTH	SACKS OF CEMENT	EST. TOP
14-3/4"	10-3/4"	32#	Approx 300'	Circulate	
9-7/8"	7"	23#	" 1150'	Circulate	
6-1/4"	4 1/2") Tapered 5 1/2")	9.5#) 15.5#)	" 1500'	125	

Propose to drill a San Andres test. Approx. 300' of 10-3/4" casing will be run and cemented to surface to shut off surface gravel and cavings, and 7" casing will be run 100' below the Artesian zone, cemented to surface. A tapered production string will be run and cemented, perforated and Sand Frac for completion.

Mud Program: - Fresh water mud w/LCM from surface to 1150', fresh water to Total Depth.

BOP Program: - BOP's to be installed on 7" casing and tested ~~API~~ VALID FOR 90 DAYS UNLESS DRILLING COMMENCED,

EXPIRES 1-2-76

IN ABOVE SPACE DESCRIBE PROPOSED PROGRAM: IF PROPOSAL IS TO DEEPEN OR PLUG BACK, GIVE DATA ON PRESENT PRODUCTIVE ZONE AND PROPOSED NEW PRODUCTIVE ZONE. GIVE BLOWOUT PREVENTER PROGRAM, IF ANY.

I hereby certify that the information above is true and complete to the best of my knowledge and belief.

Signed Harvey S. O'Neil Title Supt. of Production Date 9-30-75

(This space for State Use)

APPROVED BY W. A. Gressett TITLE SUPERVISOR, DISTRICT II

CONDITIONS OF APPROVAL, IF ANY:

Cement must be circulated to surface behind 10 3/4" 7" casing

Notify N.M.O.C.C. in sufficient time to witness cementing the 7" casing

OCT 2 1975

NEW MEXICO OIL CONSERVATION COMMISSION
WELL LOCATION AND ACREAGE DEDICATION PLAT

Form C-102
Supersedes C-128
Effective 1-1-65

All distances must be from the outer boundaries of the Section.

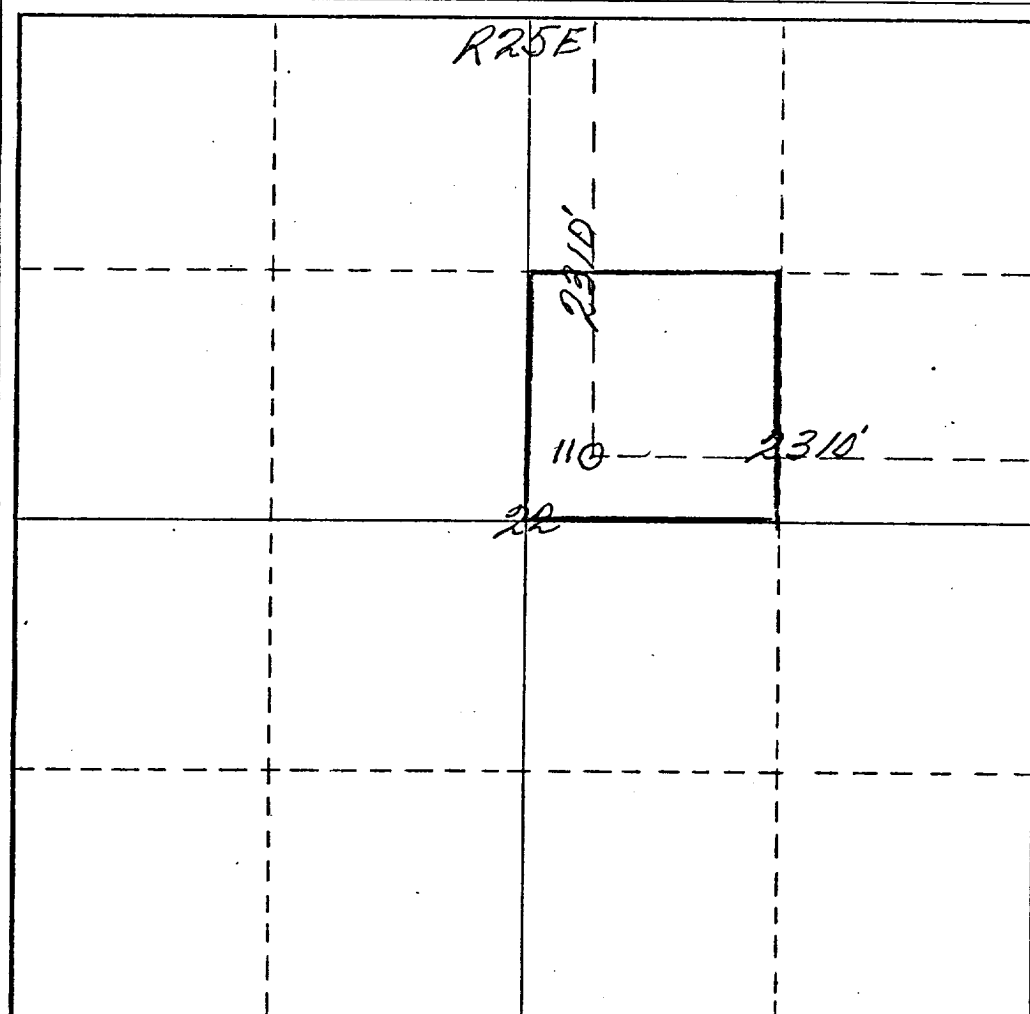
Operator <i>Yates Petroleum Corp</i>		Lease <i>ILaxy J</i>		Well No. <i>11</i>	
Unit Letter <i>G</i>	Section <i>22</i>	Township <i>17 South</i>	Range <i>25 East</i>	County <i>Eddy</i>	
Actual Footage Location of Well: <i>2310</i> feet from the <i>North</i> line and <i>2310</i> feet from the <i>East</i> line					
Ground Level Elev. <i>3533</i>	Producing Formation <i>San Andres</i>		Pool <i>Eagle Creek San Andres</i>		Dedicated Acreage: <i>40</i> Acres

1. Outline the acreage dedicated to the subject well by colored pencil or hachure marks on the plat below.
2. If more than one lease is dedicated to the well, outline each and identify the ownership thereof (both as to working interest and royalty).
3. If more than one lease of different ownership is dedicated to the well, have the interests of all owners been consolidated by communitization, unitization, force-pooling, etc?

☐ Yes ☐ No If answer is "yes," type of consolidation _____

If answer is "no," list the owners and tract descriptions which have actually been consolidated. (Use reverse side of this form if necessary.) _____

No allowable will be assigned to the well until all interests have been consolidated (by communitization, unitization, forced-pooling, or otherwise) or until a non-standard unit, eliminating such interests, has been approved by the Commission.



CERTIFICATION

I hereby certify that the information contained herein is true and complete to the best of my knowledge and belief.

Eddie M. Mahfood
Name

Eddie M. Mahfood

Position
Engineer

Company
Yates Petroleum Corp.

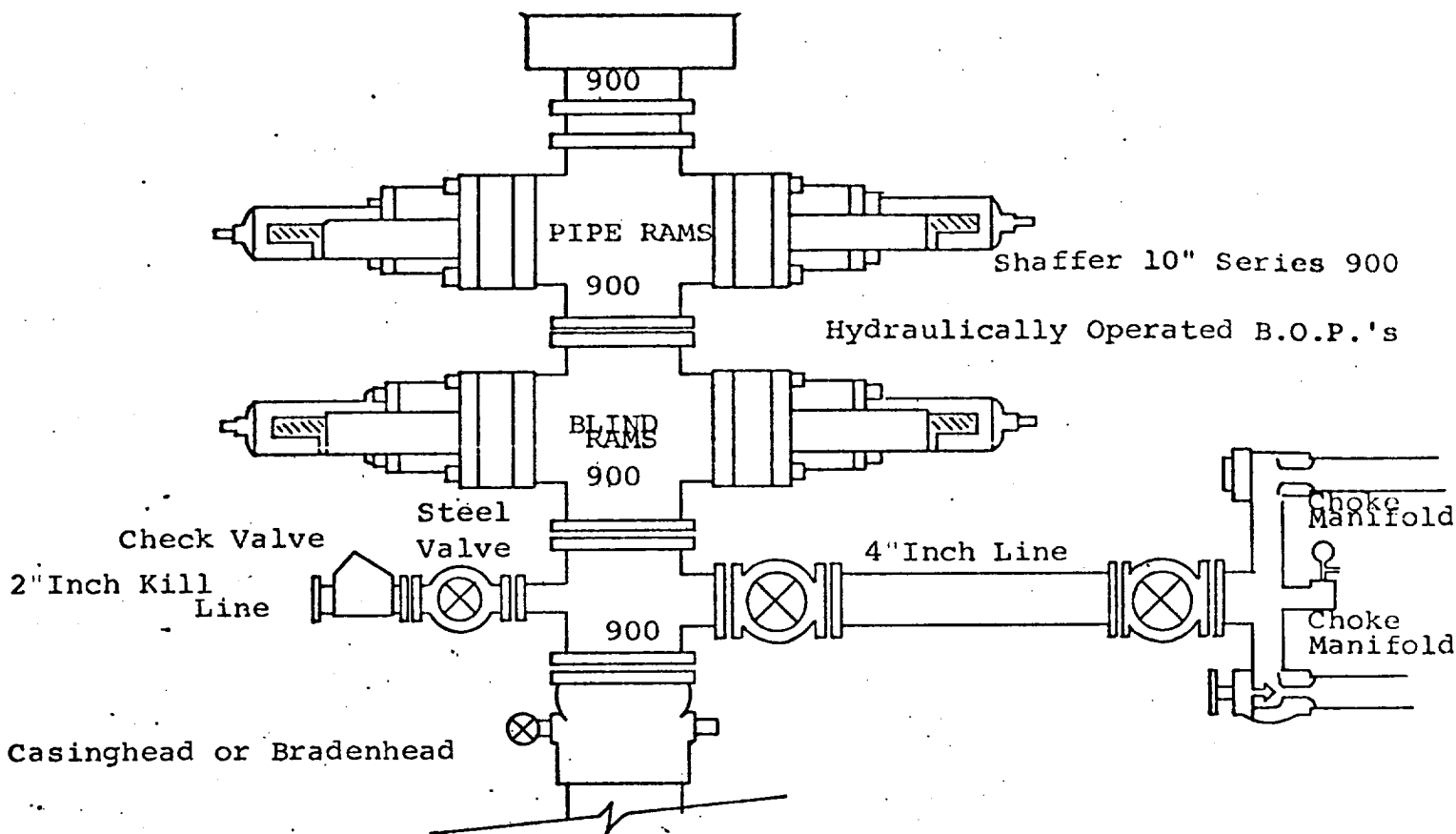
Date
9-29-75

I hereby certify that the location shown on this plat was plotted from field notes of actual surveys made by me or under my supervision, and that the same is true and correct to the best of my knowledge and belief.



Date Surveyed
August 2nd 1975
Registered Professional Engineer
and/or Land Surveyor

James H. Brown
Certificate No. *542*



THE FOLLOWING CONSTITUTE MINIMUM BLOWOUT PREVENTER REQUIREMENTS

1. All preventers to be hydraulically operated with secondary manual controls installed prior to drilling out from under casing.
2. Choke outlet to be a minimum of 4" diameter.
3. Kill line to be of all steel construction of 2" minimum diameter.
4. All connections from operating manifolds to preventers to be all steel hole or tube a minimum of one inch in diameter.
5. The available closing pressure shall be at least 15% in excess of that required with sufficient volume to operate the B.O.P.'s.
6. All connections to and from preventer to have a pressure rating equivalent to that of the B.O.P.'s.
7. Inside blowout preventer to be available on rig floor.
8. Operating controls located a safe distance from the rig floor.
9. Hole must be kept filled on trips below intermediate casing. Operator not responsible for blowouts resulting from not keeping hole full.
10. D. P. float must be installed and used below zone of first gas intrusion.