

NEW MEXICO OIL CONSERVATION COMMISSION
WELL LOCATION AND ACREAGE DEDICATION PLAT

RECEIVED

Form C-102
Supersedes C-128
Effective 1-1-65

JAN 25 1977

All distances must be from the outer boundaries of the Section.

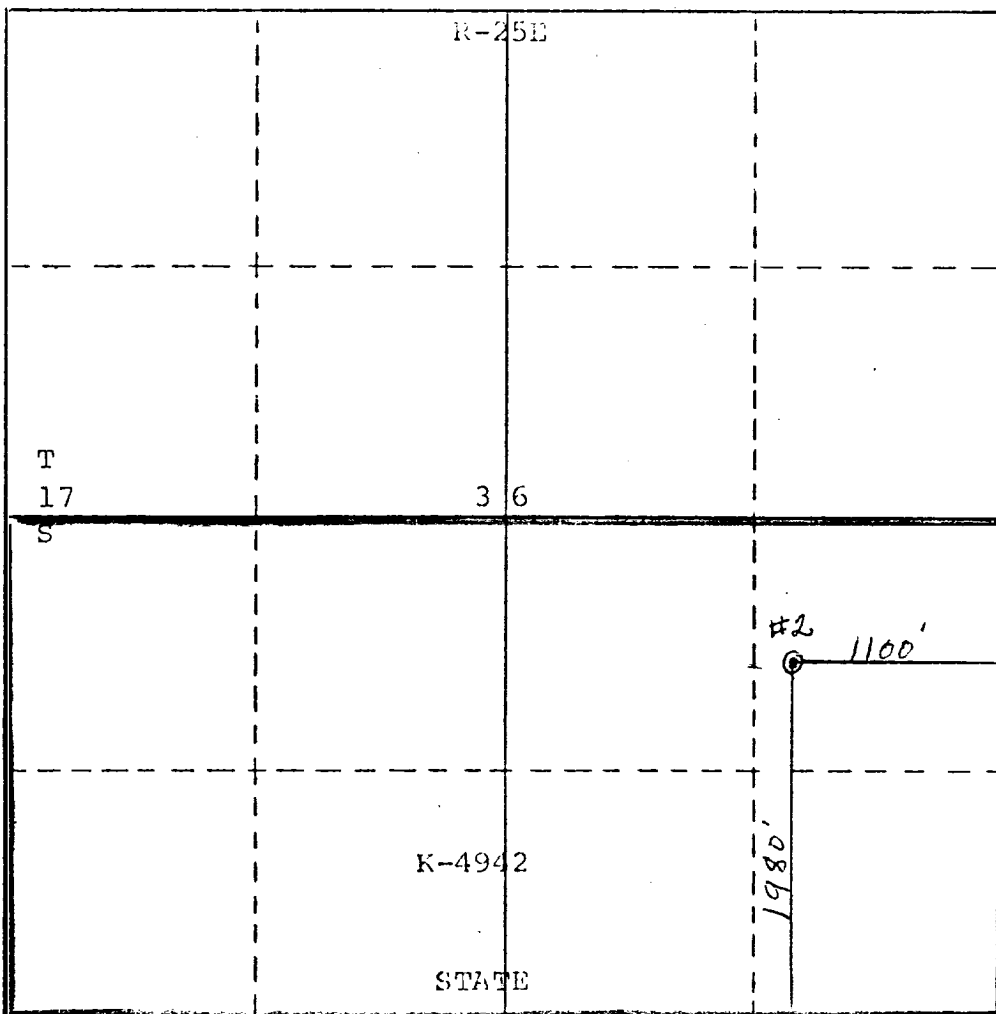
Operator Yates Petroleum Corporation			Lease ARCO "EC" State O.C.C.		Well No. 2
Unit Letter I	Section 36	Township 17S	Range 25E	County ARTESIA, OFFICE Eddy	
Actual Footage Location of Well: 1980 feet from the South line and 1100 feet from the East line					
Ground Level Elev. 3445'	Producing Formation Strawn		Pool Und. Strawn		Dedicated Acreage: 320 Acres

1. Outline the acreage dedicated to the subject well by colored pencil or hatchure marks on the plat below.
2. If more than one lease is dedicated to the well, outline each and identify the ownership thereof (both as to working interest and royalty).
3. If more than one lease of different ownership is dedicated to the well, have the interests of all owners been consolidated by communitization, unitization, force-pooling, etc?

☐ Yes ☐ No If answer is "yes," type of consolidation _____

If answer is "no," list the owners and tract descriptions which have actually been consolidated. (Use reverse side of this form if necessary.) _____

No allowable will be assigned to the well until all interests have been consolidated (by communitization, unitization, forced-pooling, or otherwise) or until a non-standard unit, eliminating such interests, has been approved by the Commission.



CERTIFICATION

I hereby certify that the information contained herein is true and complete to the best of my knowledge and belief.

Eddie M. Mahfood

Name
Eddie M. Mahfood
Position
Engineer
Company
Yates Petroleum Corp.

Date
1-25-76

I hereby certify that the well location shown on this plat was plotted from field notes of actual surveys made by me or under my supervision, and that the same is true and correct to the best of my knowledge and belief.

REFER TO ORIGINAL PLAT

Date Surveyed

Registered Professional Engineer and/or Land Surveyor

Certificate No.

0 330 660 990 1320 1650 1980 2310 2640 2970 3300 3630 3960 4290 4620 4950 5280 5610 5940 6270 6600

NEW MEXICO OIL CONSERVATION COMMISSION

P. O. DRAWER "DD"

ARTESIA, NEW MEXICO 88210

AIR MAIL

NOTICE OF GAS CONNECTION

DATE January 27, 1977

This is to notify the Oil Conservation Commission that connection
for the purchase of gas from the Yates Petroleum Corp . Arco "EC" State
Operator Lease

Well #2-Unit Letter* 2 . 36-17S-25E . West Atoka . Transwestern .
Well Unit S.T.R. Pool Name of purchaser
*Unknown Eddy County (Strawn)
was made on January 24, 1977 .

RECEIVED

JAN 31 1977

O. C. C.
ARTESIA, N. M.

Transwestern Pipeline Company

H. N. Aicklen

H. N. Aicklen

Representative

Supervisor Gas Purchase Contract Administration
Title

cc: Operator
Oil Conservation Commission - Santa Fe