

NO. OF COPIES RECEIVED	
DISTRIBUTION	
SANTA FE	
FILE	
U.S.G.S.	
LAND OFFICE	
OPERATOR	

NEW MEXICO OIL CONSERVATION COMMISSION

RECEIVED

NOV 1 1975

30-615-21675

Form C-101
Revised 1-1-65

5A. Indicate Type of Lease	
STATE <input type="checkbox"/>	FEE <input checked="" type="checkbox"/>
5. State Oil & Gas Lease No.	
7. Unit Agreement Name	
8. Farm or Lease Name	
Sowers "FB" Com	
9. Well No.	
1	
10. Field and Pool, or Wildcat	
Wildcat	
12. County	
Eddy	
19. Proposed Depth	19A. Formation
Approx 8500'	Morrow
20. Rotary or C.T.	
Rotary	
21. Elevations (Show whether DF, RT, etc.)	21A. Kind & Status Plug. Bond
3548' GR	Blanket
21B. Drilling Contractor	22. Approx. Date Work will start
Ard Drilling Co.	As soon as approved

1a. Type of Work	
C.C.C.	
b. Type of Well	
DRILL <input checked="" type="checkbox"/>	DEEPEN <input type="checkbox"/>
OIL WELL <input type="checkbox"/>	GAS WELL <input checked="" type="checkbox"/>
OTHER	
2. Name of Operator	
Yates Petroleum Corporation	
3. Address of Operator	
207 South 4th Street - Artesia, NM 88210	
4. Location of Well	
UNIT LETTER E	LOCATED 1980
FEET FROM THE North LINE	
AND 660'	FEET FROM THE West LINE OF SEC. 34
TWP. 17S RGE. 25E NMPM	
11. County	
Eddy	
19. Proposed Depth	
Approx 8500'	
19A. Formation	
Morrow	
20. Rotary or C.T.	
Rotary	
21. Elevations (Show whether DF, RT, etc.)	21A. Kind & Status Plug. Bond
3548' GR	Blanket
21B. Drilling Contractor	22. Approx. Date Work will start
Ard Drilling Co.	As soon as approved

23.

PROPOSED CASING AND CEMENT PROGRAM

SIZE OF HOLE	SIZE OF CASING	WEIGHT PER FOOT	SETTING DEPTH	SACKS OF CEMENT	EST. TOP
17 1/2"	13-3/8" or 12-3/4"	48 or 34#	Approx 200'	Circulate	
12 1/2"	8-5/8"	24#	* " 1180 to 500'	Circulate	
7-7/8"	4 1/2" or 5 1/2"	10-5-11.6#	" 8500'	250 sacks	
		15.5-17#			

Propose to drill and test the Morrow and intermediate formation. Approx. 200' of surface casing will be set to shut off gravel and caving, and intermediate casing will be set 100' below the Artesian Zone. If commercial pay is encountered, will run 4-1/2" or 5-1/2" production casing, perforate and treat as needed for production.

Mud Program: - FW gel & LCM to 1100'. FW to 5100', KCL wtr. to 6100', Flosal-Drispak mud to TD.

BOP Program: - BOP's to be installed on 8-5/8" casing and tested, pipe rams daily, blind rams on trips.

APPROVAL VALID
FOR 90 DAYS UNLESS
DRILLING COMMENCED,

EXPIRES 2-13-76

IN ABOVE SPACE DESCRIBE PROPOSED PROGRAM: IF PROPOSAL IS TO DEEPEN OR PLUG BACK, GIVE DATA ON PRESENT PRODUCTIVE ZONE AND PROPOSED NEW PRODUCTIVE ZONE. GIVE BLOWOUT PREVENTER PROGRAM, IF ANY.

I hereby certify that the information above is true and complete to the best of my knowledge and belief.

Signed Christine Tomlinson Title Geol. Secty Date 11-10-75

(This space for State Use)

APPROVED BY W. A. Gussert TITLE SUPERVISOR, DISTRICT II DATE NOV 13 1975

CONDITIONS OF APPROVAL, IF ANY:

* As noted above

Cement must be circulated to surface behind 13 3/8" & 8 7/8" casing

Notify N.M.O.C.C. in sufficient time to witness cementing the 8 7/8" casing

NE MEXICO OIL CONSERVATION COMMISSION
WELL LOCATION AND ACREAGE DEDICATION PLAT

Form C-102
Supersedes C-128
Effective 1-1-65

All distances must be from the outer boundaries of the Section.

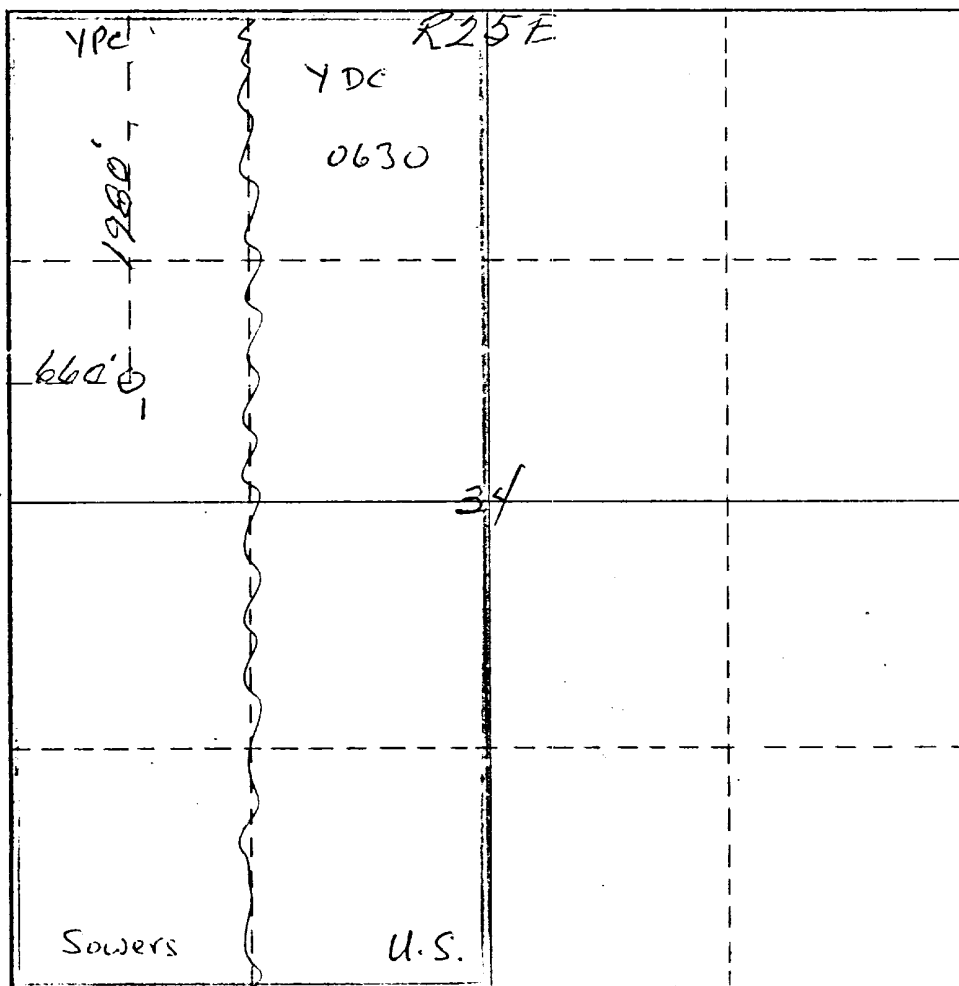
Operator <i>Yates Petroleum Corp.</i>			Lease <i>Sowers FB" Cam</i>		Well No. <i>1</i>
Unit Letter <i>E</i>	Section <i>34</i>	Township <i>17 South</i>	Range <i>25 East</i>	County <i>Eddy</i>	
Actual Footage Location of Well: <i>1980</i> feet from the <i>North</i> line and <i>660</i> feet from the <i>West</i> line					
Ground Level Elev. <i>3548</i>	Producing Formation <i>Morrow</i>		Pool <i>Wildcat</i>	Dedicated Acreage: <i>320</i> Acres	

1. Outline the acreage dedicated to the subject well by colored pencil or hachure marks on the plat below.
2. If more than one lease is dedicated to the well, outline each and identify the ownership thereof (both as to working interest and royalty).
3. If more than one lease of different ownership is dedicated to the well, have the interests of all owners been consolidated by communitization, unitization, force-pooling, etc?

☒ Yes ☐ No If answer is "yes," type of consolidation *To be communitized*

If answer is "no," list the owners and tract descriptions which have actually been consolidated. (Use reverse side of this form if necessary.) _____

No allowable will be assigned to the well until all interests have been consolidated (by communitization, unitization, forced-pooling, or otherwise) or until a non-standard unit, eliminating such interests, has been approved by the Commission.



CERTIFICATION

I hereby certify that the information contained herein is true and complete to the best of my knowledge and belief.

Name
Eddie M. Mahfood

Position

Engineer

Company

Yates Petroleum Corp.

Date

11-10-75

I hereby certify that the well location shown on this plat was determined from field notes of actual surveys made by me or under my supervision, and that the same is true and correct to the best of my knowledge and belief.

Date Surveyed

November 1st 1975

Registered Professional Engineer and/or Land Surveyor

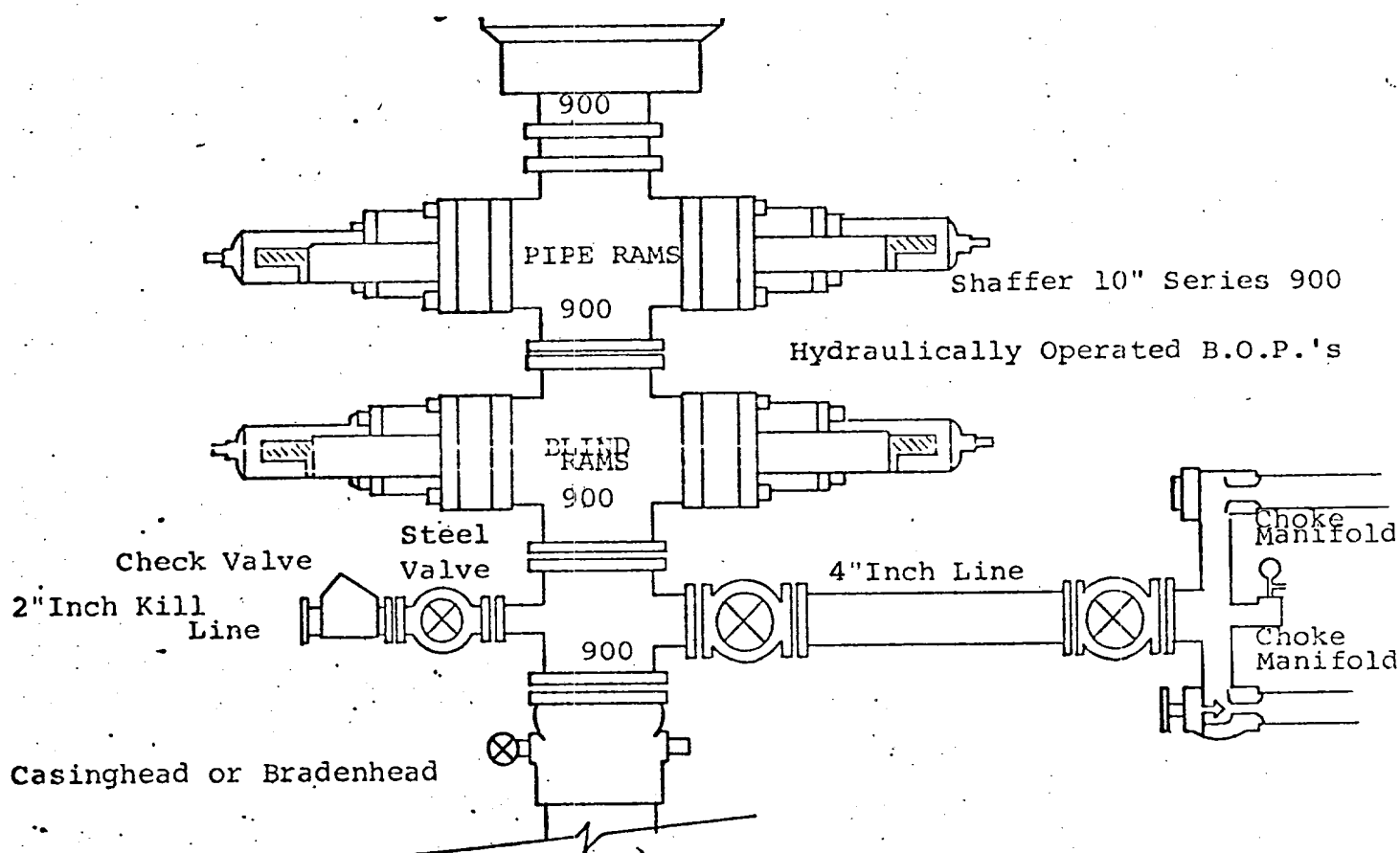
James H. Brown

Certificate No.

342

0 330 660 990 1320 1650 1980 2310 2640 2000 1500 1000 500

Yates Petroleum Corporation
 Sowers "FB" No. 1 Com
 1980' FNL & 660' FWL of Sec. 34-17S-25E
 Eddy County, NM



THE FOLLOWING CONSTITUTE MINIMUM BLOWOUT PREVENTER REQUIREMENTS

1. All preventers to be hydraulically operated with secondary manual controls installed prior to drilling out from under casing.
2. Choke outlet to be a minimum of 4" diameter.
3. Kill line to be of all steel construction of 2" minimum diameter.
4. All connections from operating manifolds to preventers to be all steel. hole or tube a minimum of one inch in diameter.
5. The available closing pressure shall be at least 15% in excess of that required with sufficient volume to operate the B.O.P.'s.
6. All connections to and from preventer to have a pressure rating equivalent to that of the B.O.P.'s.
7. Inside blowout preventer to be available on rig floor.
8. Operating controls located a safe distance from the rig floor.
9. Hole must be kept filled on trips below intermediate casing. Operator not responsible for blowouts resulting from not keeping hole full.
10. D. P. float must be installed and used below zone of first gas intrusion.