

NO. OF COPIES RECEIVED	5
DISTRIBUTION	
SANTA FE	
FILE	
U.S.G.S.	
LAND OFFICE	
OPERATOR	

NEW MEXICO OIL CONSERVATION COMMISSION

RECEIVED

NOV 14 1975

30-015-21678  
Form C-101  
Revised 1-1-65

5A. Indicate Type of Lease  
STATE ☐ FEE ☒

5. State Oil & Gas Lease No.

O. C. C.

APPLICATION FOR PERMIT TO DRILL, DEEPEN, OR PLUG BACK

1a. Type of Work b. Type of Well OIL WELL <input checked="" type="checkbox"/> GAS WELL <input type="checkbox"/> OTHER <input type="checkbox"/> DEEPEN <input type="checkbox"/> PLUG BACK <input type="checkbox"/> SINGLE ZONE <input type="checkbox"/> MULTIPLE ZONE <input type="checkbox"/>		7. Unit Agreement Name
2. Name of Operator Yates Petroleum Corporation		8. Farm or Lease Name Jackson "AT"
3. Address of Operator 207 South 4th Street-Artesia, NM 88210		9. Well No. 7
4. Location of Well UNIT LETTER N LOCATED 990 FEET FROM THE South LINE AND 1650 FEET FROM THE West LINE OF SEC. 14 TWP. 17S RGE. 25E NMPM		10. Field and Pool, or Wildcat Eagle Creek S.A.
		12. County Eddy
		19. Proposed Depth Approx. 1500'
		19A. Formation San Andres
		20. Rotary or C.T. Rotary
21. Elevations (Show whether DF, RT, etc.) 3495' GR	21A. Kind & Status Plug. Bond Blanket	22. Approx. Date Work will start As soon as approved

PROPOSED CASING AND CEMENT PROGRAM

SIZE OF HOLE	SIZE OF CASING	WEIGHT PER FOOT	SETTING DEPTH	SACKS OF CEMENT	EST. TOP
14-3/4"	10-3/4"	32#	Approx. 300'	Circulate	
9-7/8"	7"	20-23#	" 1150'	Circulate	
6-1/4"	5 1/2" Tapered 4 1/2"	15.5# 9.5#	" 1500'	125 sacks	

We propose to drill a San Andres test with approx. 300' of 10-3/4" casing to shut off surface gravel and cavings and 7" casing will be set 100' below the Artesian zone with cement circulated. A tapered production string will be run to total depth and cemented if productive and perforated and Sand Frac'd for production.

APPROVAL VALID  
FOR 90 DAYS UNLESS  
DRILLING COMMENCED,

EXPIRES 2-14-76

IN ABOVE SPACE DESCRIBE PROPOSED PROGRAM: IF PROPOSAL IS TO DEEPEN OR PLUG BACK, GIVE DATA ON PRESENT PRODUCTIVE ZONE AND PROPOSED NEW PRODUCTIVE ZONE. GIVE BLOWOUT PREVENTER PROGRAM, IF ANY.

I hereby certify that the information above is true and complete to the best of my knowledge and belief.

Signed Christine Tomlinson Title Geol Secty Date 11-12-75

(This space for State Use)

APPROVED BY W.A. Grissett TITLE SUPERVISOR, DISTRICT II DATE NOV 14 1975

CONDITIONS OF APPROVAL, IF ANY:

Cement must be circulated to surface behind 10 3/4" + 7" casing

Notify N.M.O.C.C. in sufficient time to witness cementing the 7" casing

MEXICO OIL CONSERVATION COMMISSION  
WELL LOCATION AND ACREAGE DEDICATION PLAT

Form C-102  
Supersedes C-128  
Effective 1-1-65

All distances must be from the outer boundaries of the Section.

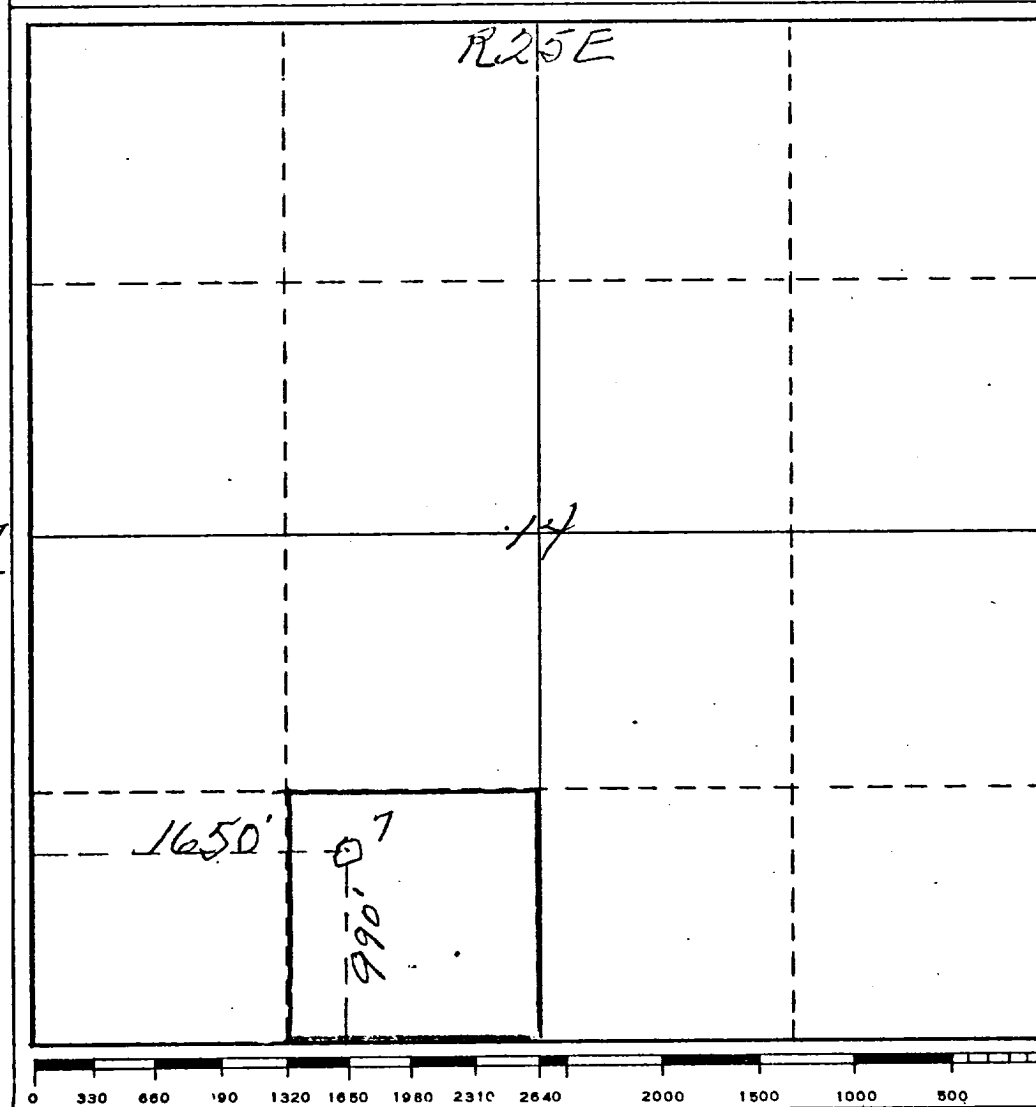
Operator <i>Yates Petroleum Corp.</i>			Lease <i>"Jackson AT"</i>		Well No. <i>7</i>
Unit Letter <i>N</i>	Section <i>14</i>	Township <i>17 South</i>	Range <i>25 East</i>	County <i>Eddy</i>	
Actual Footage Location of Well: <i>990</i> feet from the <i>South</i> line and <i>1650</i> feet from the <i>West</i> line					
Ground Level Elev. <i>3495</i>	Producing Formation <i>San Andres</i>		Pool <i>Eagle Creek S.A.</i>		Dedicated Acreage: <i>40</i> Acres

1. Outline the acreage dedicated to the subject well by colored pencil or hachure marks on the plat below.
2. If more than one lease is dedicated to the well, outline each and identify the ownership thereof (both as to working interest and royalty).
3. If more than one lease of different ownership is dedicated to the well, have the interests of all owners been consolidated by communitization, unitization, force-pooling, etc?

☐ Yes    ☐ No    If answer is "yes," type of consolidation \_\_\_\_\_

If answer is "no," list the owners and tract descriptions which have actually been consolidated. (Use reverse side of this form if necessary.) \_\_\_\_\_

No allowable will be assigned to the well until all interests have been consolidated (by communitization, unitization, forced-pooling, or otherwise) or until a non-standard unit, eliminating such interests, has been approved by the Commission.



**CERTIFICATION**

I hereby certify that the information contained herein is true and complete to the best of my knowledge and belief.

*Eddie M. Mahfood*

Name  
*Eddie M. Mahfood*

Position  
*Engineer*

Company  
*Yates Petroleum Corp.*

Date  
*11-12-75*

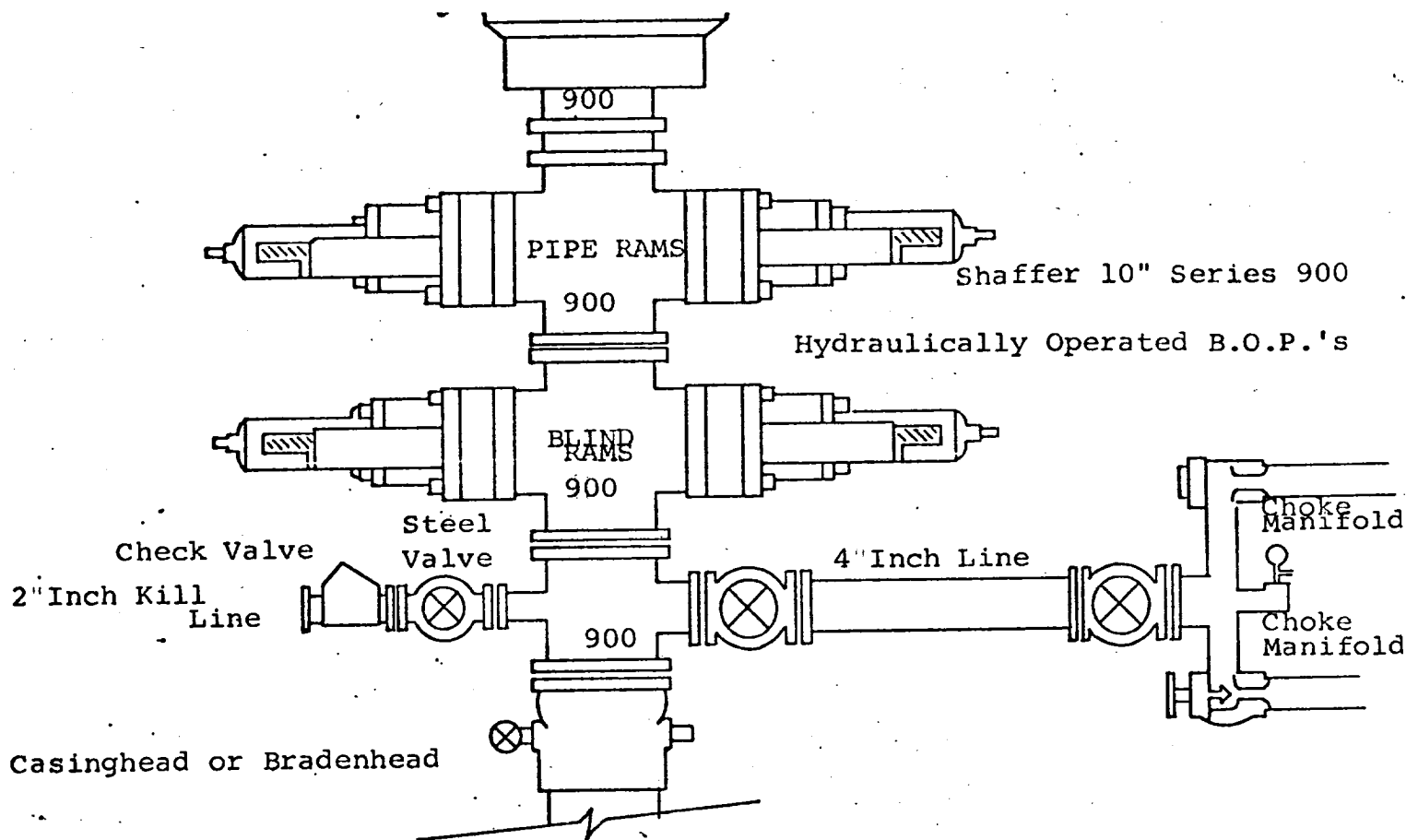
I hereby certify that the well location shown on this plat was plotted from field notes of actual surveys made by me or under my supervision, and that the same is true and correct to the best of my knowledge and belief.

Date Surveyed  
*November 8th 1975*

Registered Professional Engineer and/or Land Surveyor

*James H. Lawrence*  
Certificate No. *542*

0 330 660 990 1320 1650 1980 2310 2640 2000 1500 1000 500 0



THE FOLLOWING CONSTITUTE MINIMUM BLOWOUT PREVENTER REQUIREMENTS

1. All preventers to be hydraulically operated with secondary manual controls installed prior to drilling out from under casing.
2. Choke outlet to be a minimum of 4" diameter.
3. Kill line to be of all steel construction of 2" minimum diameter.
4. All connections from operating manifolds to preventers to be all steel. hole or tube a minimum of one inch in diameter.
5. The available closing pressure shall be at least 15% in excess of that required with sufficient volume to operate the B.O.P.'s.
6. All connections to and from preventer to have a pressure rating equivalent to that of the B.O.P.'s.
7. Inside blowout preventer to be available on rig floor.
8. Operating controls located a safe distance from the rig floor.
9. Hole must be kept filled on trips below intermediate casing. Operator not responsible for blowouts resulting from not keeping hole full.
10. D. P. float must be installed and used below zone of first gas intrusion.