

NE MEXICO OIL CONSERVATION COMMISSION
WELL LOCATION AND ACREAGE DEDICATION PLAT

Form C-102
Supersedes C-128
Effective 1-1-65

All distances must be from the outer boundaries of the Section.

Operator Yates Petroleum Corporation		Lease Caskey "EV" Com		Well No. 1
Unit Letter N	Section 30	Township 17S	Range 26E	County Eddy
Actual Footage Location of Well: 660 feet from the South line and 1400 feet from the West line				
Ground Level Elev. 3428' GR	Producing Formation Atoka	Pool Und. Atoka	Dedicated Acreage: 320 3/4 Acres	

- Outline the acreage dedicated to the subject well by colored pencil or hachure marks on the plat below.
- If more than one lease is dedicated to the well, outline each and identify the ownership thereof (both as to working interest and royalty).
- If more than one lease of different ownership is dedicated to the well, have the interests of all owners been consolidated by communitization, unitization, force-pooling, etc?

RECEIVED

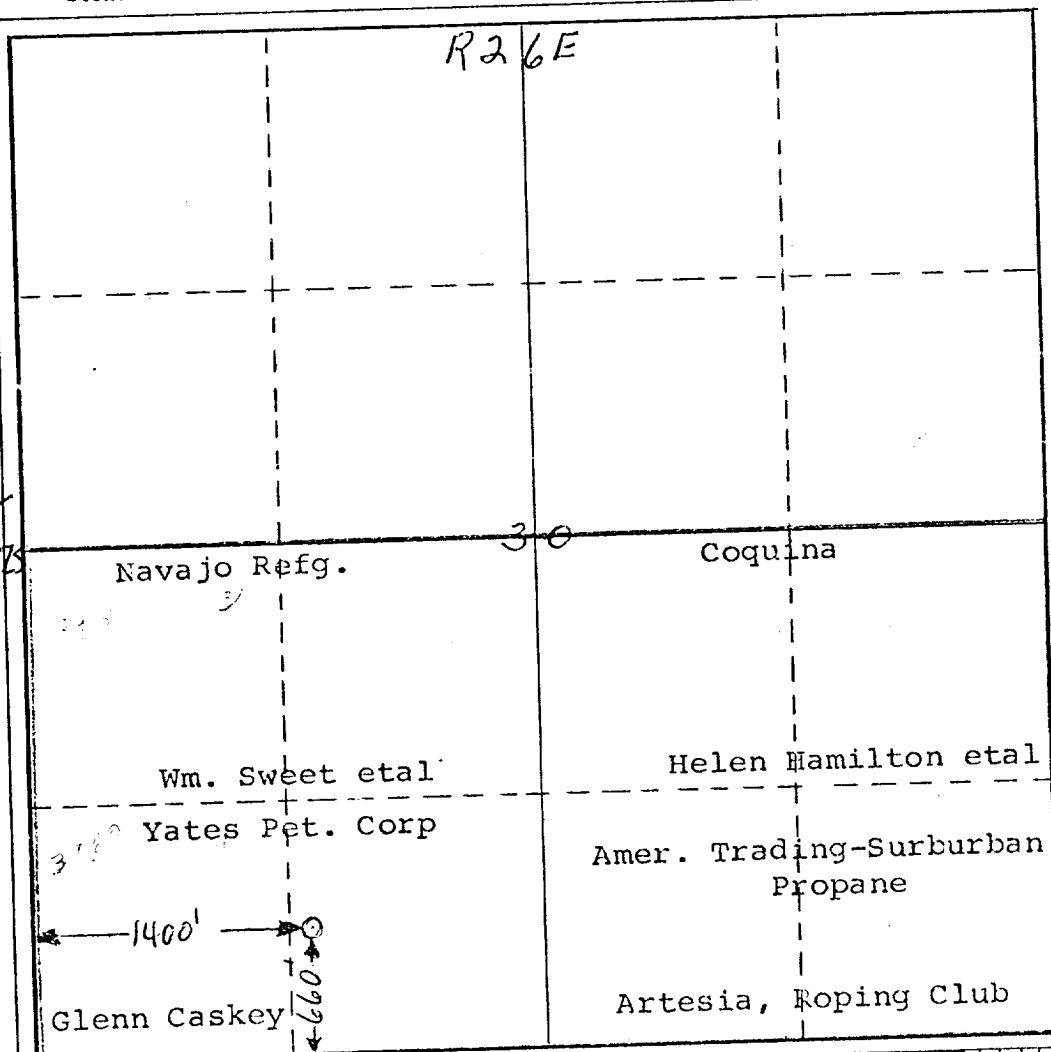
JAN 26 1976

O. C. C.
ARTESIA, OFFICE

☒ Yes ☐ No If answer is "yes," type of consolidation To be communitized

If answer is "no," list the owners and tract descriptions which have actually been consolidated. (Use reverse side of this form if necessary.)

No allowable will be assigned to the well until all interests have been consolidated (by communitization, unitization, forced-pooling, or otherwise) or until a non-standard unit, eliminating such interests, has been approved by the Commission.



CERTIFICATION

I hereby certify that the information contained herein is true and complete to the best of my knowledge and belief.

Eddie M. Mahford

Name
Eddie M. Mahford

Position
Engineer

Company
Yates Pet. Corp.

Date
1-23-76

I hereby certify that the well location shown on this plat was plotted from field notes of actual surveys made by me or under my supervision, and that the same is true and correct to the best of my knowledge and belief.

REFER TO ORIGINAL PLAT

Date Surveyed
Dated 11-13-75

Registered Professional Engineer
and/or Land Surveyor

Certificate No.

