

NO. OF COPIES RECEIVED	
DISTRIBUTION	
SANTA FE	1
FILE	
U.S.G.S.	
LAND OFFICE	
OPERATOR	1

NEW MEXICO OIL CONSERVATION COMMISSION

RECEIVED

NOV 19 1975

30-015-21683
Form C-101
Revised 1-4-65

5A. Indicate Type of Lease
STATE <input type="checkbox"/> FEE <input checked="" type="checkbox"/>
5. State Oil & Gas Lease No.
7. Unit Agreement Name
8. Farm or Lease Name
Gissler "AV"
9. Well No.
12
10. Field and Pool, or Wildcat
Eagle Creek (S.A.)
12. County
Eddy

APPLICATION FOR PERMIT TO DRILL, DEEPEN, OR PLUG BACK

1a. Type of Work	DRILL <input checked="" type="checkbox"/> DEEPEN <input type="checkbox"/> PLUG BACK <input type="checkbox"/>
b. Type of Well	OIL WELL <input checked="" type="checkbox"/> GAS WELL <input type="checkbox"/> OTHER <input type="checkbox"/> SINGLE ZONE <input type="checkbox"/> MULTIPLE ZONE <input type="checkbox"/>
2. Name of Operator	Yates Petroleum Corporation
3. Address of Operator	207 South 4th Street - Artesia, NM 88210
4. Location of Well	UNIT LETTER C LOCATED 840 FEET FROM THE North LINE AND 2310 FEET FROM THE West LINE OF SEC. 23 TWP. 17S RGE. 25E NMPM
19. Proposed Depth	Approx. 1500'
19A. Formation	San Andres
20. Rotary or C.T.	Rotary
21. Elevations (Show whether DF, RT, etc.)	3490'
21A. Kind & Status Plug. Bond	Blanket
21B. Drilling Contractor	Byrd Drilling Co.
22. Approx. Date Work will start	As soon as approved

23.

PROPOSED CASING AND CEMENT PROGRAM

SIZE OF HOLE	SIZE OF CASING	WEIGHT PER FOOT	SETTING DEPTH	SACKS OF CEMENT	EST. TOP
15"	10-3/4"	32#	Approx. 300'	Circulate	
9-7/8"	7"	20#	" 1180'	Circulate	
6 1/4"	4 1/2" & 5 1/2"	9.5 & 15.5#	" 1500'	150	

Propose to drill a San Andres test. Approx. 300' of 10-3/4" casing will be run and cemented to surface to shut off surface gravel and cavings, 7" casing will be run 100' below the Artesian Zone, cemented to surface. A tapered string of 4 1/2" & 5 1/2" production casing will be run and cemented, perforated and Sand Frac'd for production.

Mud Program: - Fresh water mud w/LCM from surface to 1180', fresh water to total depth.

BOP Program: - BOP's to be installed on 7" casing and tested daily.

APPROVAL VALID
FOR 90 DAYS UNLESS
DRILLING COMMENCED,

EXPIRES 2-20-76

IN ABOVE SPACE DESCRIBE PROPOSED PROGRAM: IF PROPOSAL IS TO DEEPEN OR PLUG BACK, GIVE DATA ON PRESENT PRODUCTIVE ZONE AND PROPOSED NEW PRODUCTIVE ZONE, GIVE BLOWOUT PREVENTER PROGRAM, IF ANY.

I hereby certify that the information above is true and complete to the best of my knowledge and belief.

Signed Christine Tomlinson Title Geol. Secty Date 11-19-75

(This space for State Use)

APPROVED BY W.A. Gussert TITLE SUPERVISOR, DISTRICT II DATE NOV 20 1975

CONDITIONS OF APPROVAL, IF ANY:

Cement must be circulated to surface behind 10 3/4" & 7" casing

Notify N.M.O.C.C. in sufficient time to witness cementing the 7" casing

NEW MEXICO OIL CONSERVATION COMMISSION
WELL LOCATION AND ACREAGE DEDICATION PLAT

Form C-102
Supersedes C-128
Effective 1-1-65

All distances must be from the outer boundaries of the Section.

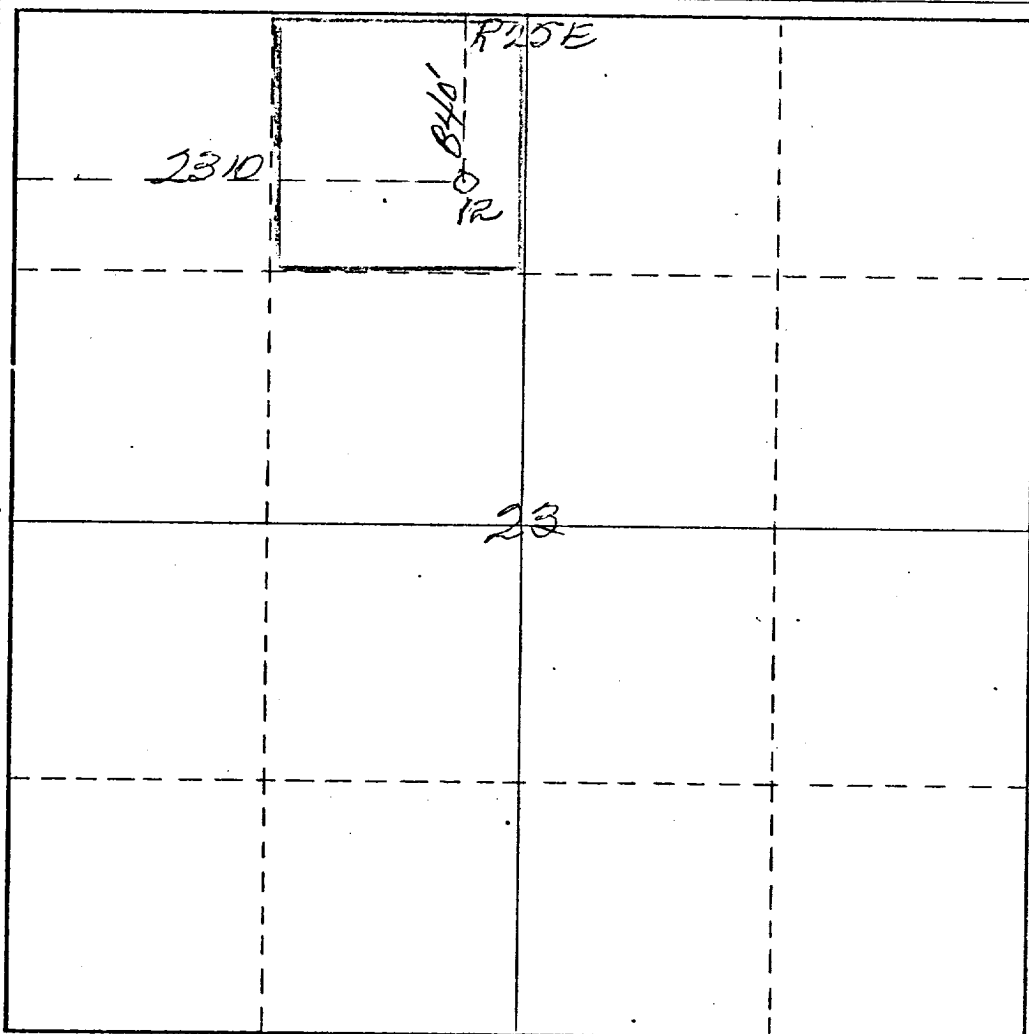
Operator <i>Yates Petroleum Corp.</i>		Lease <i>Gissler "AV"</i>		Well No. <i>12</i>	
Unit Letter <i>C</i>	Section <i>23</i>	Township <i>17 South</i>	Range <i>25 East</i>	County <i>Edley</i>	
Actual Footage Location of Well: <i>840</i> feet from the <i>North</i> line and <i>2310</i> feet from the <i>West</i> line					
Ground Level Elev. <i>3490</i>	Producing Formation <i>San Andres</i>		Pool <i>Eagle Creek (S.A.)</i>	Dedicated Acreage: <i>40</i> Acres	

1. Outline the acreage dedicated to the subject well by colored pencil or hachure marks on the plat below.
2. If more than one lease is dedicated to the well, outline each and identify the ownership thereof (both as to working interest and royalty).
3. If more than one lease of different ownership is dedicated to the well, have the interests of all owners been consolidated by communitization, unitization, force-pooling, etc?

☐ Yes ☐ No If answer is "yes," type of consolidation _____

If answer is "no," list the owners and tract descriptions which have actually been consolidated. (Use reverse side of this form if necessary.) _____

No allowable will be assigned to the well until all interests have been consolidated (by communitization, unitization, forced-pooling, or otherwise) or until a non-standard unit, eliminating such interests, has been approved by the Commission.



CERTIFICATION

I hereby certify that the information contained herein is true and complete to the best of my knowledge and belief.

Eddie M. Mahfood

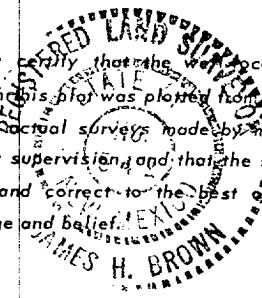
Name
Eddie M. Mahfood

Position
Engineer

Company
Yates Pet. Corporation

Date
11-17-75

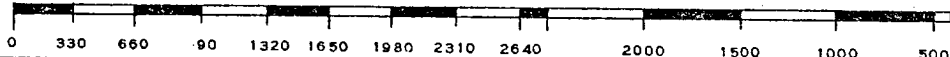
I hereby certify that the location shown on this plat was plotted from field notes of actual surveys made by me or under my supervision and that the same is true and correct to the best of my knowledge and belief.

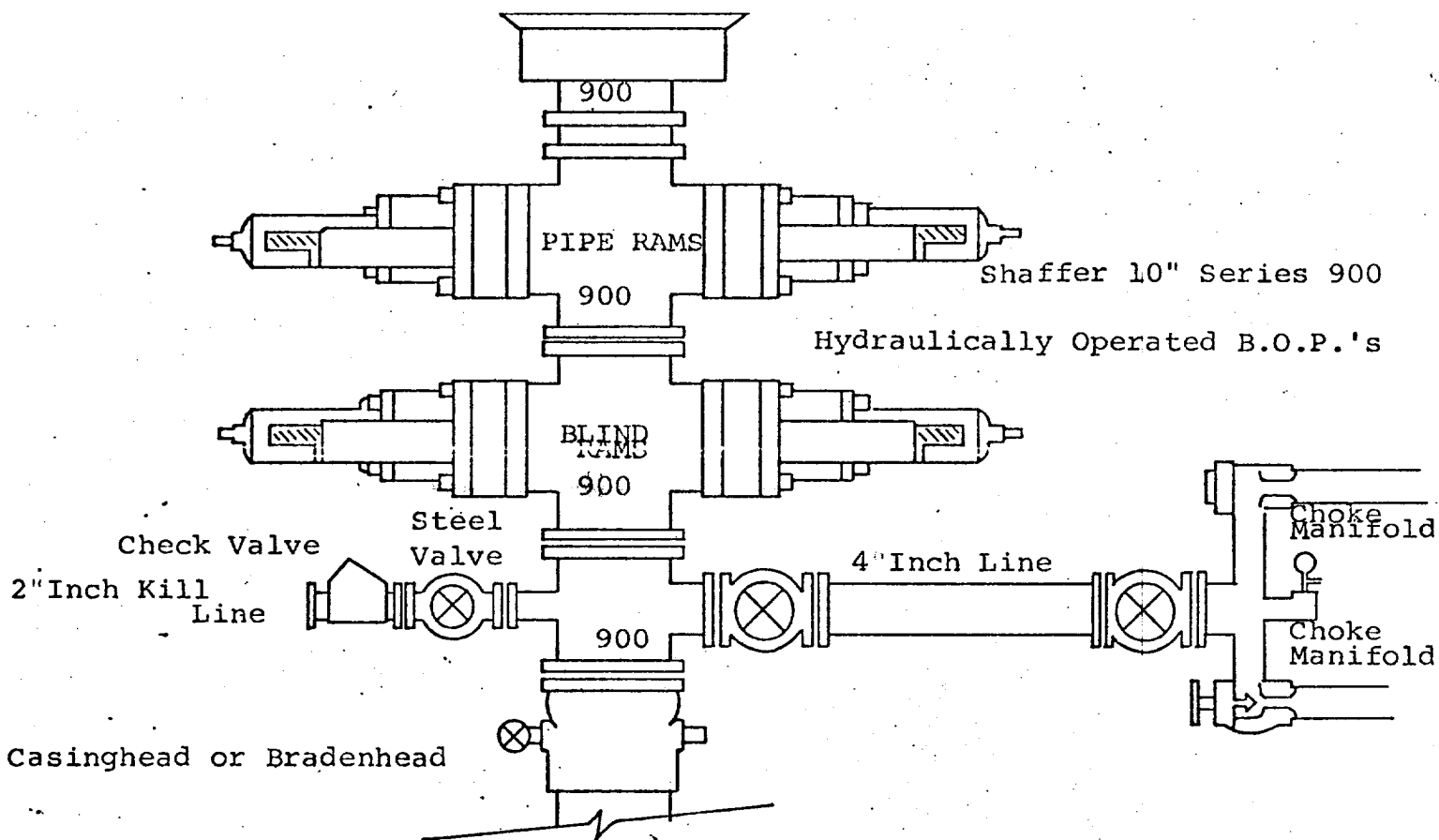


Date Surveyed
November 14th 1975

Registered Professional Engineer
and/or Land Surveyor

James H. Brown
Certificate No. *542*





THE FOLLOWING CONSTITUTE MINIMUM BLOWOUT PREVENTER REQUIREMENTS

1. All preventers to be hydraulically operated with secondary manual controls installed prior to drilling out from under casing.
2. Choke outlet to be a minimum of 4" diameter.
3. Kill line to be of all steel construction of 2" minimum diameter.
4. All connections from operating manifolds to preventers to be all steel, hole or tube a minimum of one inch in diameter.
5. The available closing pressure shall be at least 15% in excess of that required with sufficient volume to operate the B.O.P.'s.
6. All connections to and from preventer to have a pressure rating equivalent to that of the B.O.P.'s.
7. Inside blowout preventer to be available on rig floor.
8. Operating controls located a safe distance from the rig floor.
9. Hole must be kept filled on trips below intermediate casing. Operator not responsible for blowouts resulting from not keeping hole full.
10. D. P. float must be installed and used below zone of first gas intrusion.