

NO. OF COPIES RECEIVED	6
DISTRIBUTION	
SANTA FE	1
FILE	1
U.S.G.S.	1
LAND OFFICE	
OPERATOR	2

NEW MEXICO OIL & GAS COMMISSION

DEC 5 1975

O. C. C.
ARTESIA, OFFICE

30-015-21704

Form C-101
Revised 1-1-65

5A. Indicate Type of Lease STATE <input type="checkbox"/> FEE <input checked="" type="checkbox"/>
5. State Oil & Gas Lease No.
7. Unit Agreement Name
8. Firm or Lease Name Caffall "FD" Com.
9. Well No. 1
10. Field and Pool, or Wildcat Kennedy Farms
12. County Eddy
19. Proposed Depth Approx. 8900'
19A. Formation Morrow
20. Rotary or C.T. Rotary
21. Elevations (Show whether DF, RT, etc.) 3337'
21A. Kind & Status Plug. Bond Blanket
21B. Drilling Contractor Ard Drilling Co.
22. Approx. Date Work will start As soon as approved

1a. Type of Work	
b. Type of Well OIL WELL <input type="checkbox"/> GAS WELL <input checked="" type="checkbox"/> OTHER	DRILL <input checked="" type="checkbox"/> DEEPEN <input type="checkbox"/> PLUG BACK <input type="checkbox"/>
2. Name of Operator Yates Petroleum Corporation	
3. Address of Operator 207 South 4th Street - Artesia, NM 88210	
4. Location of Well UNIT LETTER 0 LOCATED 660 FEET FROM THE South LINE AND 1980 FEET FROM THE East LINE OF SEC. 15 TWP. 17S RGE. 26E NMPM	
23. PROPOSED CASING AND CEMENT PROGRAM	

SIZE OF HOLE	SIZE OF CASING	WEIGHT PER FOOT	SETTING DEPTH	SACKS OF CEMENT	EST. TOP
17½"	13-3/8"	48#	Approx 525'	Circulate	
12¼"	8-5/8"	24#	" 1500'	Circulate	
7-7/8"	5½" or 4½"	17#-15.5# 10.5-11.6	" 8900'	250 sacks	

Unorthodox location approval pending - Case #5593 12-3-75.

Propose to drill to approx. 8900' and test the Morrow and intermediate formation. Approx 525' of surface casing will be run and cemented to shut off gravel & cavings, and intermediate casing will be run to 100 ft below the Artesian zone and cemented to the surface. If production is encountered 4½ or 5½" production casing will be run and cemented.

Mud Program: - FW gel and LCM from surface to 1500' (dry drill if unable to circulate); fresh water to 5300'; 2% KCL water to 7900' and Flosal-Drispak to total depth.

BOP Program: - BOP's and hydril will be installed on intermediate casing, pipe rams & hydril tested daily for operational, blind rams on trips.

IN ABOVE SPACE DESCRIBE PROPOSED PROGRAM: IF PROPOSAL IS TO DEEPEN OR PLUG BACK, GIVE DATA ON PRESENT PRODUCTIVE ZONE AND PROPOSED NEW PRODUCTIVE ZONE. GIVE BLOWOUT PREVENTER PROGRAM, IF ANY.

I hereby certify that the information above is true and complete to the best of my knowledge and belief.

Signed Eddie Intalpe Title Engineer Date 12-4-75

(This space for State Use)

APPROVED BY W. A. Gessett TITLE SUPERVISOR, DISTRICT II DATE DEC 15 1975

CONDITIONS OF APPROVAL, IF ANY:

Subject to Case #5593

Cement must be circulated to surface behind 13 3/8" - 8 7/8" casing

Notify N.M.O.C.C. in sufficient time to witness cementing the 8 7/8" casing

APPROVAL VALID FOR 90 DAYS UNLESS DRILLING COMMENCED, EXPIRES 3-15-76

NE EXICO OIL CONSERVATION COMMISSION
WELL LOCATION AND ACREAGE DEDICATION PLAT

Form C-102
Supersedes C-128
Effective 1-1-65

All distances must be from the outer boundaries of the Section.

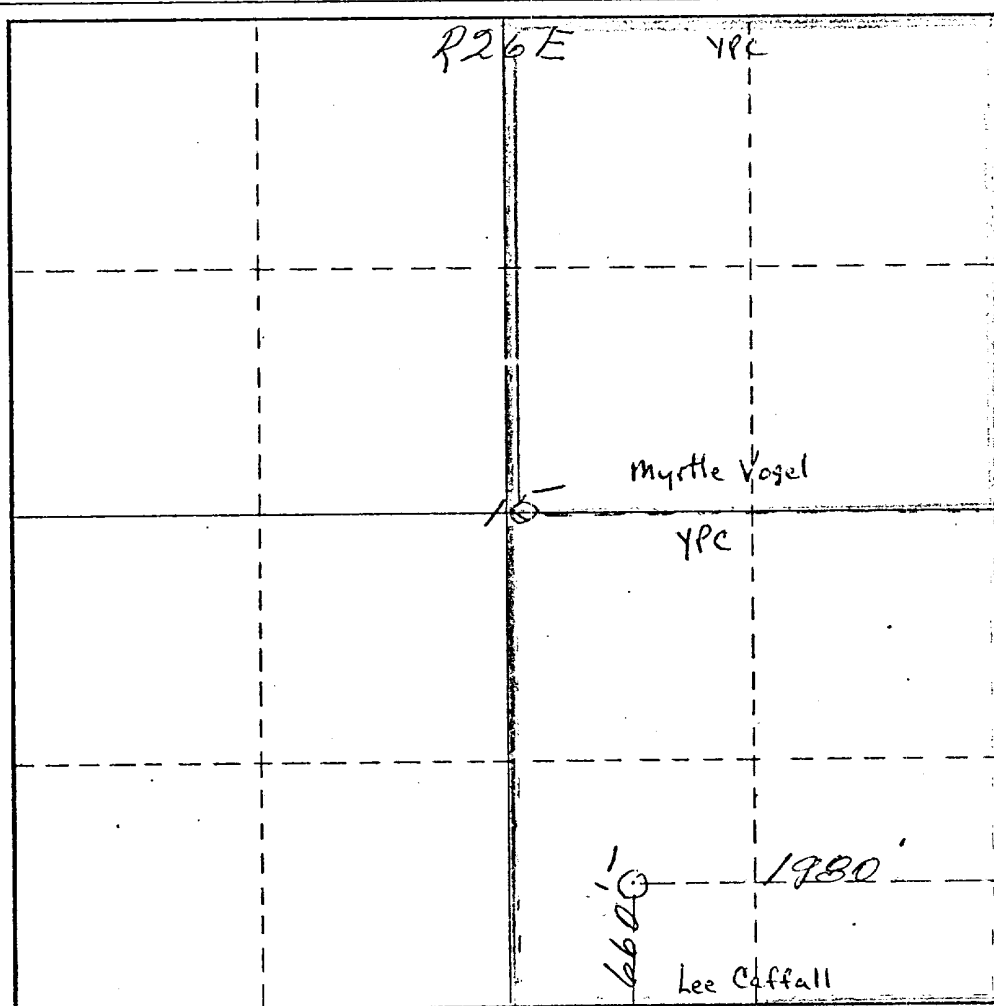
Operator <u>Yates Petroleum Corp.</u>			Lease <u>Saffall "ED" Com.</u>			Well No. <u>1</u>		
Unit Letter <u>0</u>	Section <u>15</u>	Township <u>17 South</u>	Range <u>26 East</u>	County <u>Eddy</u>				
Actual Footage Location of Well: <u>660</u> feet from the <u>South</u> line and <u>1980</u> feet from the <u>East</u> line								
Ground Level Elev. <u>3337</u>	Producing Formation <u>Morrow</u>		Pool <u>Kennedy Farms</u>			Dedicated Acreage: <u>320</u> Acres		

1. Outline the acreage dedicated to the subject well by colored pencil or hatchure marks on the plat below.
2. If more than one lease is dedicated to the well, outline each and identify the ownership thereof (both as to working interest and royalty).
3. If more than one lease of different ownership is dedicated to the well, have the interests of all owners been consolidated by communitization, unitization, force-pooling, etc?

☒ Yes ☐ No If answer is "yes," type of consolidation To be Communitized

If answer is "no," list the owners and tract descriptions which have actually been consolidated. (Use reverse side of this form if necessary.)

No allowance will be assigned to the well until all interests have been consolidated (by communitization, unitization, forced-pooling, or otherwise) or until a non-standard unit, eliminating such interests, has been approved by the Commission.



CERTIFICATION

I hereby certify that the information contained herein is true and complete to the best of my knowledge and belief.

Eddie M. Mahford
Name Eddie M. Mahford
Engineer

Position

Company
Yates Petroleum Corp.

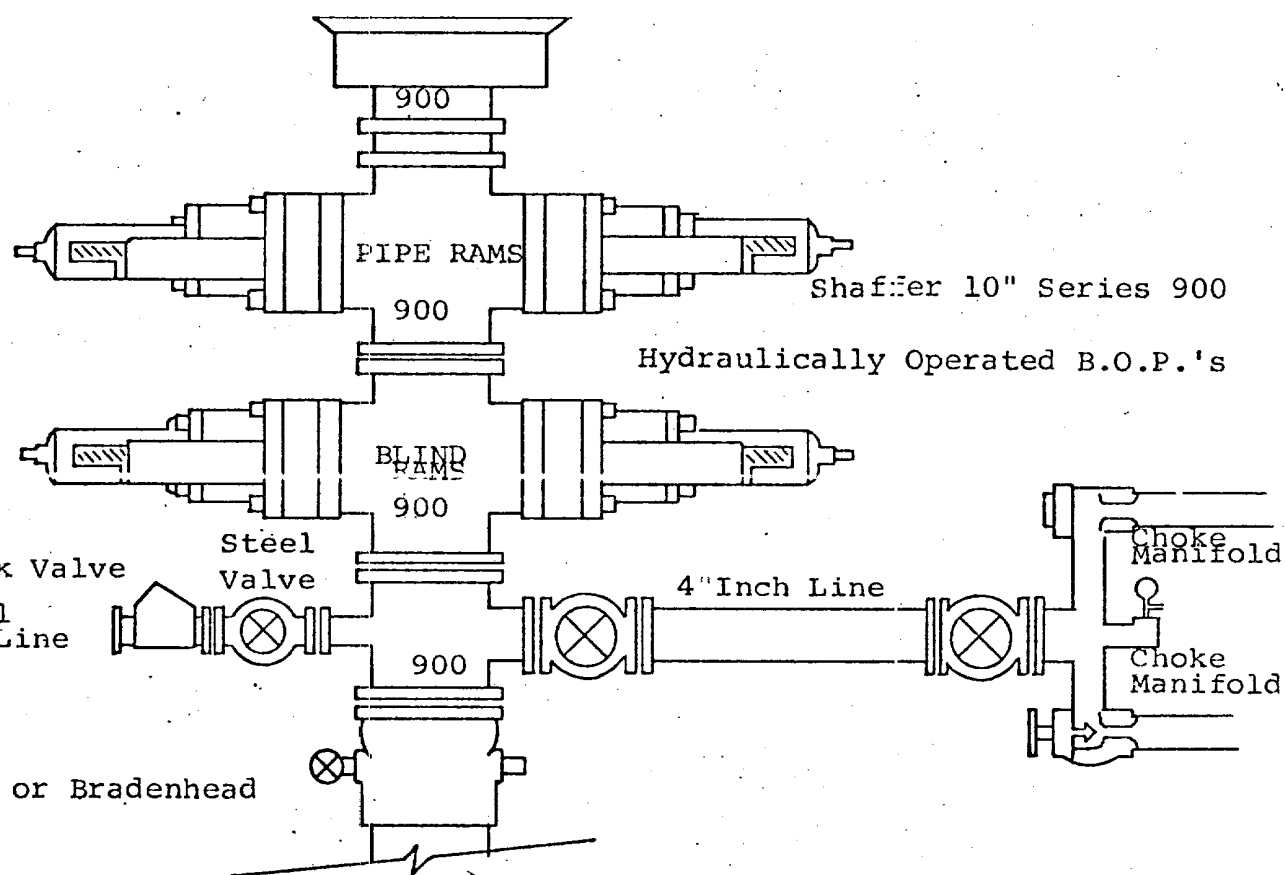
Date
12-4-75

I hereby certify that the well location shown on this plat was plotted from field notes of actual surveys made by me or under my supervision, and that the same is true and correct to the best of my knowledge and belief.

Date Surveyed
November 10th 1975
Registered Professional Engineer
and/or Land Surveyor

James H. Brown
Certificate No. 542

0 330 660 990 1320 1650 1980 2310 2640 2000 1500 1000 500



THE FOLLOWING CONSTITUTE MINIMUM BLOWOUT PREVENTER REQUIREMENTS

1. All preventers to be hydraulically operated with secondary manual controls installed prior to drilling out from under casing.
2. Choke outlet to be a minimum of 4" diameter.
3. Kill line to be of all steel construction of 2" minimum diameter.
4. All connections from operating manifolds to preventers to be all steel. hole or tube a minimum of one inch in diameter.
5. The available closing pressure shall be at least 15% in excess of that required with sufficient volume to operate the B.O.P.'s.
6. All connections to and from preventer to have a pressure rating equivalent to that of the B.O.P.'s.
7. Inside blowout preventer to be available on rig floor.
8. Operating controls located a safe distance from the rig floor.
9. Hole must be kept filled on trips below intermediate casing. Operator not responsible for blowouts resulting from not keeping hole full.
10. D. P. float must be installed and used below zone of first gas intrusion.