

NO. OF COPIES RECEIVED	2
DISTRIBUTION	
SANTA FE	
FILE	
U.S.G.S.	
LAND OFFICE	
OPERATOR	

NEW MEXICO OIL CONSERVATION COMMISSION

JAN 30 1976

O. C. C.
ARTESIA, OFFICE

30-015-21728

Form C-101
Revised 1-1-65

5A. Indicate Type of Lease	
STATE <input type="checkbox"/>	FEE <input checked="" type="checkbox"/>

5. State Oil & Gas Lease No.

APPLICATION FOR PERMIT TO DRILL, DEEPEN, OR PLUG BACK

1a. Type of Work		7. Unit Agreement Name	
b. Type of Well OIL WELL <input type="checkbox"/> GAS WELL <input checked="" type="checkbox"/> OTHER <input type="checkbox"/>		8. Farm or Lease Name Sweet "FM" Com	
2. Name of Operator Yates Petroleum Corporation		9. Well No. 1	
3. Address of Operator 207 South 4th Street - Artesia, NM 88210		10. Field and Pool, or Wildcat Wildcat	
4. Location of Well UNIT LETTER G LOCATED 1980 FEET FROM THE North LINE AND 1980 FEET FROM THE East LINE OF SEC. 25 TWP. 17S RGE. 26E 1/4MPM		12. County Eddy	
19. Proposed Depth Approx. 9200'		19A. Formation Morrow	
20. Rotary or C.T. Rotary		21. Elevations (Show whether DF, RT, etc.) 3295' GR	
21A. Kind & Status Plug. Bond Blanket		21B. Drilling Contractor Ard Drilling Co.	
22. Approx. Date Work will start As soon as approved			

23.

PROPOSED CASING AND CEMENT PROGRAM

SIZE OF HOLE	SIZE OF CASING	WEIGHT PER FOOT	SETTING DEPTH	SACKS OF CEMENT	EST. TOP
17 1/2"	13-3/8"	48#	420'	Circulate	
12 1/4"-11"	8-5/8"	24#	1500'	Circulate	
7-7/8"	4 1/2 or 5 1/2"	10.5 or 17#	TD	300 sacks	

Propose to drill and test the Morrow and intermediate formations. Surface casing will be set at approx. 420' to shut off caving and surface gravel. Intermediate casing will be set 100' below the Artesian Zone, if production is encountered, 4 1/2 or 5 1/2" production casing will be run and stimulated for production.

Mud Program: - Mud to 1500', FW to 5500', KCL wtr to 8200'. Flosal and Drispak to TD.

BOP's - will be installed on 8-5/8" and tested daily, blink rams on trips.

APPROVAL VALID
FOR 90 DAYS UNLESS
DRILLING COMMENCED,

EXPIRES 5-2-76

IN ABOVE SPACE DESCRIBE PROPOSED PROGRAM: IF PROPOSAL IS TO DEEPEN OR PLUG BACK, GIVE DATA ON PRESENT PRODUCTIVE ZONE AND PROPOSED NEW PRODUCTIVE ZONE. GIVE BLOWOUT PREVENTER PROGRAM, IF ANY.

I hereby certify that the information above is true and complete to the best of my knowledge and belief.

Signed Christine Imbruno Title Geol. Secty Date 1-30-76

(This space for State Use)

APPROVED BY W. A. Gressett TITLE SUPERVISOR, DISTRICT II DATE FEB 2 1976

CONDITIONS OF APPROVAL, IF ANY:

Cement must be circulated to
surface behind 13 3/8" & 8 5/8" casing

Notify N.M.O.C.C. in sufficient
time to witness cementing
the 8 5/8" casing

NEW MEXICO OIL CONSERVATION COMMISSION
WELL LOCATION AND ACREAGE DEDICATION PLAT

Form C-102
Supersedes C-128
Effective 1-1-65

All distances must be from the outer boundaries of the Section.

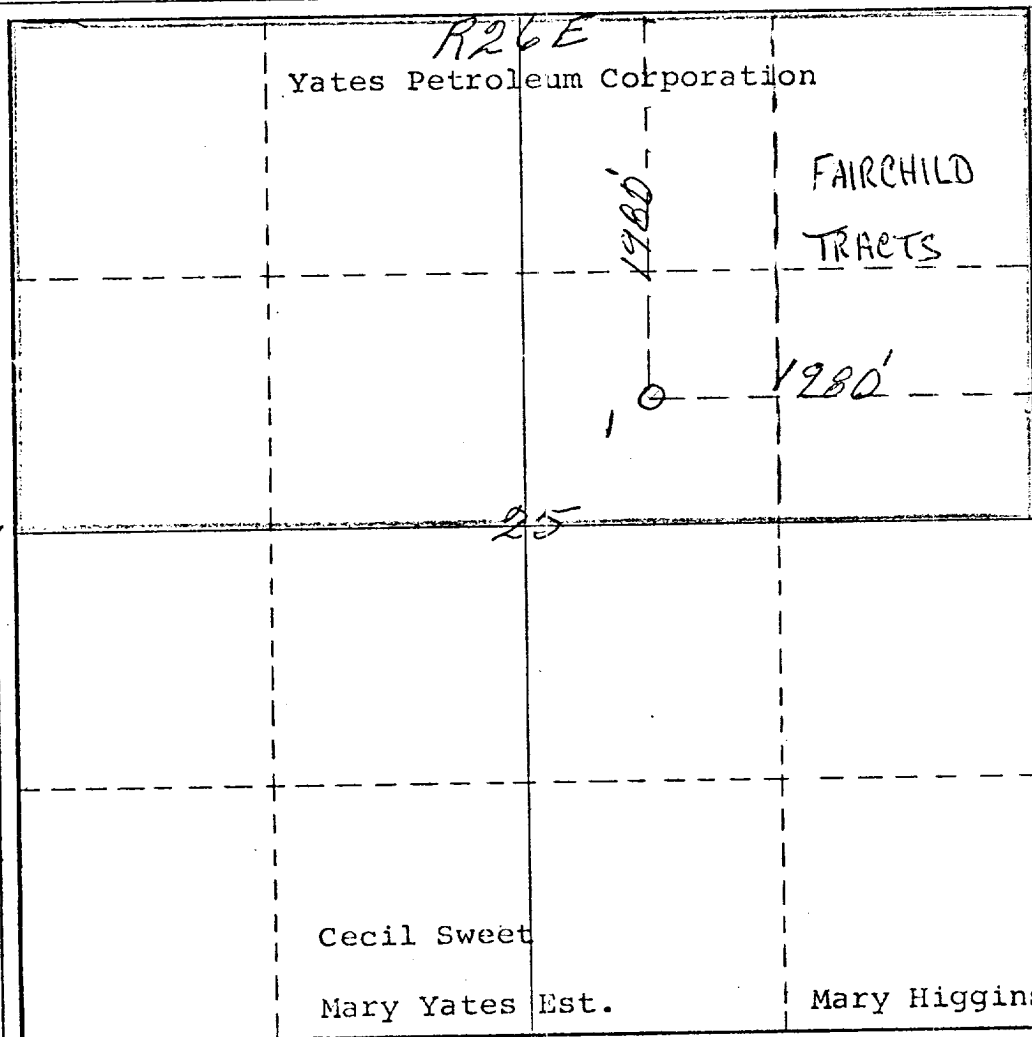
Operator <i>Yates Petroleum Corporation</i>		Lease <i>Sweet "FM" Com</i>		Well No. <i>1</i>	
Unit Letter <i>G</i>	Section <i>25</i>	Township <i>17 South</i>	Range <i>26 East</i>	County <i>Eddy</i>	
Actual Footage Location of Well: <i>1980</i> feet from the <i>North</i> line and <i>1980</i> feet from the <i>East</i> line					
Ground Level Elev. <i>3295</i>	Producing Formation <i>Morrow</i>		Pool <i>Undesignated</i>		Dedicated Acreage: <i>320</i> Acres

1. Outline the acreage dedicated to the subject well by colored pencil or hatchure marks on the plat below.
2. If more than one lease is dedicated to the well, outline each and identify the ownership thereof (both as to working interest and royalty).
3. If more than one lease of different ownership is dedicated to the well, have the interests of all owners been consolidated by communitization, unitization, force-pooling, etc?

☒ Yes ☐ No If answer is "yes," type of consolidation *To be Communitized*

If answer is "no," list the owners and tract descriptions which have actually been consolidated. (Use reverse side of this form if necessary.)

No allowable will be assigned to the well until all interests have been consolidated (by communitization, unitization, forced-pooling, or otherwise) or until a non-standard unit, eliminating such interests, has been approved by the Commission.



CERTIFICATION

I hereby certify that the information contained herein is true and complete to the best of my knowledge and belief.

Eddie M. Mahfood
Name

Eddie M. Mahfood

Position
Engineer

Company
Yates Pet. Corp

Date
1-30-76

I hereby certify that the well location shown on this plat was plotted from field notes of a true survey made by me or under my supervision and that the same is true and correct to the best of my knowledge and belief.



Date Surveyed
January 24th 1976

Registered Professional Engineer
and/or Land Surveyor

James H. Brown
Certificate No. *542*