

NO. OF COPIES RECEIVED	
DISTRIBUTION	
SANTA FE	
FILE	
U.S.G.S.	
LAND OFFICE	
OPERATOR	

NEW MEXICO OIL CONSERVATION COMMISSION

RECEIVED

FEB 27 1976

30-015-21743

Form C-101
Revised 1-1-65

5A. Indicate Type of Lease	STATE <input type="checkbox"/> FEDERAL <input checked="" type="checkbox"/>
5. State Oil & Gas Lease No.	
7. Unit Agreement Name	
8. Farm or Lease Name	Achen Frey "DM"
9. Well No.	6
10. Field and Pool, or Wildcat	Eagle Creek (S.A.)
12. County	Eddy

APPLICATION FOR PERMIT TO DRILL, DEEPEN, OR PLUG BACK			
1a. Type of Work			
b. Type of Well DRILL <input checked="" type="checkbox"/> DEEPEN <input type="checkbox"/> PLUG BACK <input type="checkbox"/>			
OIL WELL <input checked="" type="checkbox"/> GAS WELL <input type="checkbox"/> OTHER <input type="checkbox"/> SINGLE ZONE <input type="checkbox"/> MULTIPLE ZONE <input type="checkbox"/>			
2. Name of Operator Yates Petroleum Corporation ✓			
3. Address of Operator 207 South 4th Street - Artesia, NM 88210			
4. Location of Well UNIT LETTER I LOCATED 330 FEET FROM THE East LINE			
AND 1650 FEET FROM THE South LINE OF SEC. 14 TWP. 17S RGE. 25E NMPM			
19. Proposed Depth Approx 1500		19A. Formation San Andres	20. Rotary or C.T. Rotary
21. Elevations (Show whether DF, RT, etc.) 3465' GR	21A. Kind & Status Plug. Bond Blanket	21B. Drilling Contractor Byrd Drilling Co.	22. Approx. Date Work will start As soon as approved

PROPOSED CASING AND CEMENT PROGRAM

SIZE OF HOLE	SIZE OF CASING	WEIGHT PER FOOT	SETTING DEPTH	SACKS OF CEMENT	EST. TOP
15"	10-3/4"	32#	Approx. 330'	Circulate	
9 1/2"	7"	20#	" 1180'	Circulate	
6 1/4"	4 1/2 & 5 1/2"	9.5# & 15.5#	" 1500'	125 sacks	

It is our intention to drill a San Andres test. 330' of surface casing will be set to shut off gravel and cavings, intermediate casing will be set 100' below the Artesian zone and if productive 4 1/2" and 5 1/2" production casing will be run, perforated and stimulated for production.

Mud Program: - FW Gel and LCM to 1180' or dry drill, FW to TD

BOP Program: - BOP's will be installed on intermediate casing and will be tested daily.

APPROVAL VALID
FOR 90 DAYS UNLESS
DRILLING COMMENCED,

EXPIRES 6-1-76

IN ABOVE SPACE DESCRIBE PROPOSED PROGRAM: IF PROPOSAL IS TO DEEPEN OR PLUG BACK, GIVE DATA ON PRESENT PRODUCTIVE ZONE AND PROPOSED NEW PRODUCTIVE ZONE. GIVE BLOWOUT PREVENTER PROGRAM, IF ANY.

I hereby certify that the information above is true and complete to the best of my knowledge and belief.

Signed W. A. Gressett Title Geol. Secty Date 2-26-76

(This space for State Use)

APPROVED BY W. A. Gressett TITLE SUPERVISOR, DISTRICT II DATE MAR 1 1976

CONDITIONS OF APPROVAL, IF ANY:

Cement must be circulated to
surface behind 10 3/4" 7" casing

Notify N.M.O.C.C. in sufficient
time to witness cementing
the 7" casing

NE MEXICO OIL CONSERVATION COMMISSION
WELL LOCATION AND ACREAGE DEDICATION PLAT

Form C-102
Supersedes C-128
Effective 1-1-65

All distances must be from the outer boundaries of the Section.

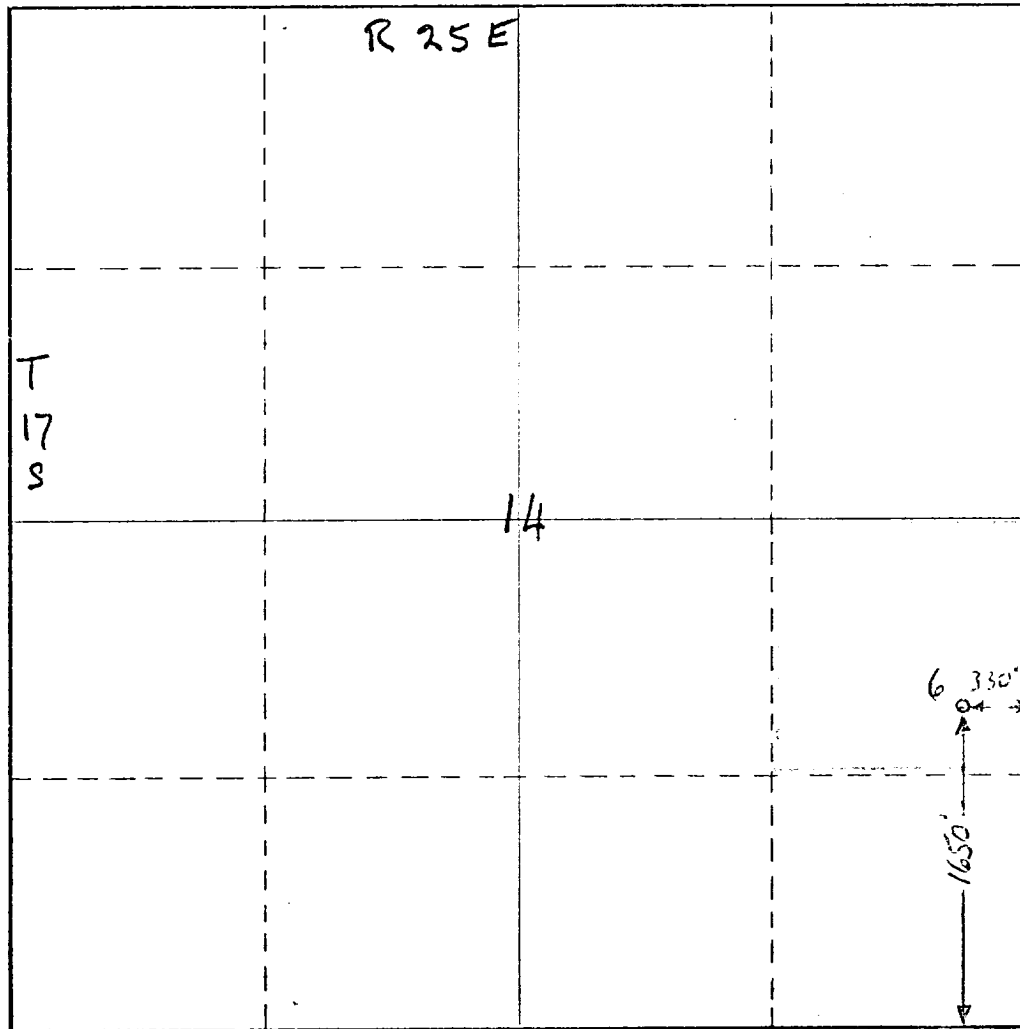
Operator Yates Petroleum Corp		Lease Achen Frey "DM"		Well No. 6	
Unit Letter 1	Section 14	Township 17-S	Range 25-E	County Eddy	
Actual Footage Location of Well: 330 feet from the East line and 1650 feet from the South line					
Ground Level Elev. 3465	Producing Formation San Andres	Pool Eagle Creek (S.A.)	Dedicated Acreage: 40 Acres		

- Outline the acreage dedicated to the subject well by colored pencil or hachure marks on the plat below.
- If more than one lease is dedicated to the well, outline each and identify the ownership thereof (both as to working interest and royalty).
- If more than one lease of different ownership is dedicated to the well, have the interests of all owners been consolidated by communitization, unitization, force-pooling, etc?

☐ Yes ☐ No If answer is "yes," type of consolidation _____

If answer is "no," list the owners and tract descriptions which have actually been consolidated. (Use reverse side of this form if necessary.) _____

No allowable will be assigned to the well until all interests have been consolidated (by communitization, unitization, forced-pooling, or otherwise) or until a non-standard unit, eliminating such interests, has been approved by the Commission.



CERTIFICATION

I hereby certify that the information contained herein is true and complete to the best of my knowledge and belief.

Eddie M. Hartsfield
Name
Eddie M. Hartsfield

Position
Surveyor

Company
Yates Petroleum Corp.

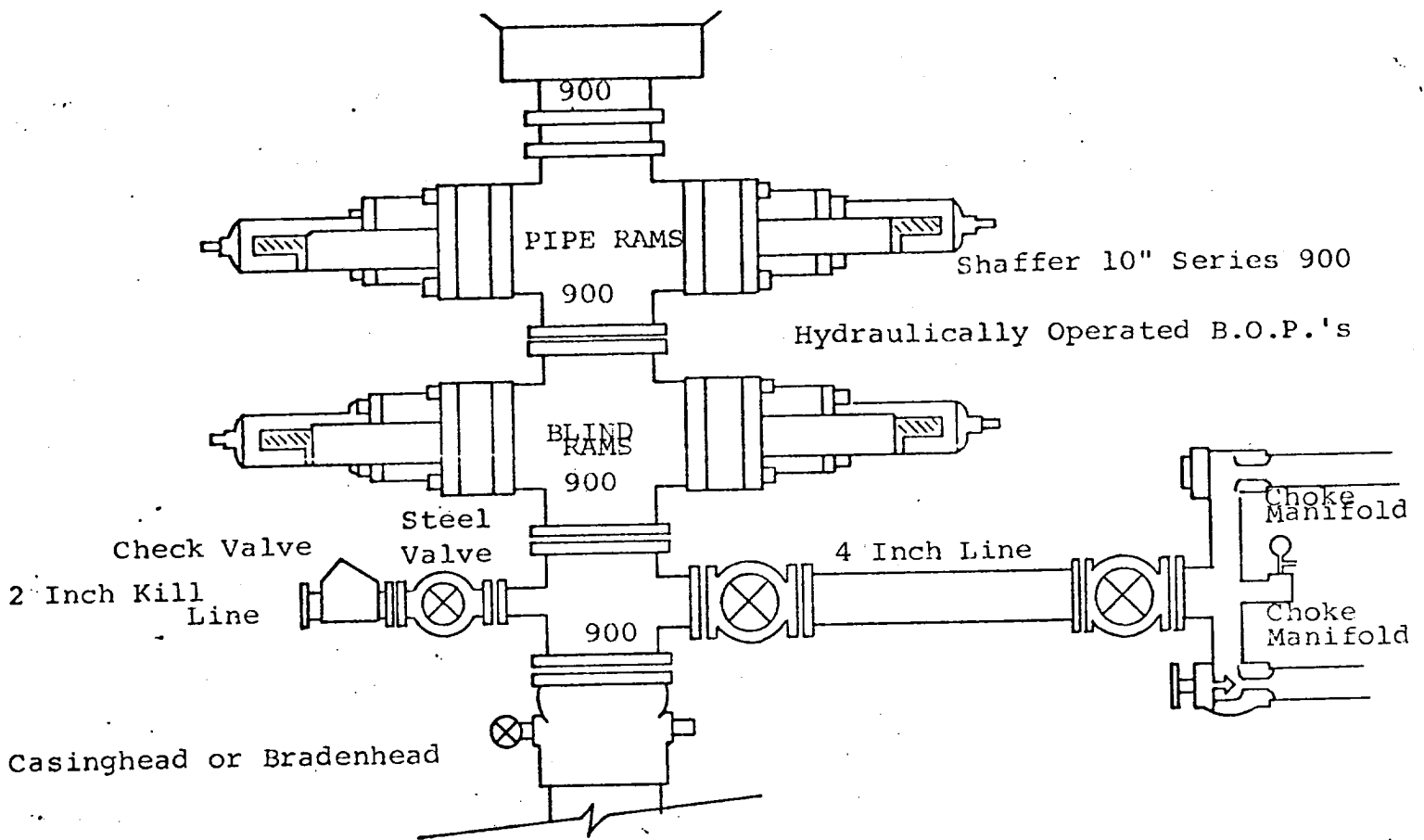
Date
2-26-76

I hereby certify that the well location shown on this plat was plotted from field notes of actual surveys made by me or under my supervision, and that the same is true and correct to the best of my knowledge and belief.

Eddie M. Hartsfield
Date Surveyed
2-26-76

Registered Professional Engineer and/or Land Surveyor

Certificate No.
4605



THE FOLLOWING CONSTITUTE MINIMUM BLOWOUT PREVENTER REQUIREMENTS

1. All preventers to be hydraulically operated with secondary manual controls installed prior to drilling out from under casing.
2. Choke outlet to be a minimum of 4" diameter.
3. Kill line to be of all steel construction of 2" minimum diameter.
4. All connections from operating manifolds to preventers to be all steel hole or tube a minimum of one inch in diameter.
5. The available closing pressure shall be at least 15% in excess of that required with sufficient volume to operate the B.O.P.'s.
6. All connections to and from preventer to have a pressure rating equivalent to that of the B.O.P.'s.
7. Inside blowout preventer to be available on rig floor.
8. Operating controls located a safe distance from the rig floor.
9. Hole must be kept filled on trips below intermediate casing. Operator not responsible for blowouts resulting from not keeping hole full.
10. D. P. float must be installed and used below zone of first gas intrusion.