

UNITED STATES  
DEPARTMENT OF THE INTERIOR  
GEOLOGICAL SURVEY

## APPLICATION FOR PERMIT TO DRILL, DEEPEN, OR PLUG BACK

## 1a. TYPE OF WORK

DRILL ☒DEEPEN ☐PLUG BACK ☐

## b. TYPE OF WELL

OIL  
WELL ☒GAS  
WELL ☐

OTHER

RECEIVED

SINGLE  
ZONE ☐MULTIPLE  
ZONE ☐

## 2. NAME OF OPERATOR

Yates Petroleum Corporation ✓

MAR 4 1976

## 3. ADDRESS OF OPERATOR

207 South 4th Street - Artesia, NM 88210

## 4. LOCATION OF WELL (Report location clearly and in accordance with any State requirements.)

At surface

1980' FSL &amp; 660' FEL of Sec. 28-16S-30E

At proposed prod. zone

## 14. DISTANCE IN MILES AND DIRECTION FROM NEAREST TOWN OR POST OFFICE\*

5 miles North of Loco Hills, NM

## 15. DISTANCE FROM PROPOSED\*

LOCATION TO NEAREST  
PROPERTY OR LEASE LINE, FT.  
(Also to nearest drlg. unit line, if any)

## 16. NO. OF ACRES IN LEASE

17. NO. OF ACRES ASSIGNED  
TO THIS WELL

40

18. DISTANCE FROM PROPOSED LOCATION\*  
TO NEAREST WELL, DRILLING, COMPLETED,  
OR APPLIED FOR, ON THIS LEASE, FT.

## 19. PROPOSED DEPTH

Approx. 2900'

## 20. ROTARY OR CABLE TOOLS

Rotary

## 21. ELEVATIONS (Show whether DF, RT, GR, etc.)

3765' GR

## 22. APPROX. DATE WORK WILL START\*

As soon as approved

## 23.

## PROPOSED CASING AND CEMENTING PROGRAM

SIZE OF HOLE	SIZE OF CASING	WEIGHT PER FOOT	SETTING DEPTH	QUANTITY OF CEMENT
12 1/4"	8-5/8"	24#	Approx. 300'	Circulate
7-7/8"	5 1/2"	14#	2900'	250 sacks

Propose to drill a San Andres test. Surface casing will be run to top of salt section and cemented to surface. Oil string will be set thru pay and cemented with 600' of cement cover, perforated and stimulated as needed for production.

Mud Program: - Gel and native mud to top of Queen, then lo-fluid loss mud to TD.

BOP Program: - BOP's will be installed on 8-5/8" casing and tested daily for operational.

RECEIVED  
FEB 23 1976  
GEOLOGICAL SURVEY  
ARTESIA, NEW MEXICO

IN ABOVE SPACE DESCRIBE PROPOSED PROGRAM: If proposal is to deepen or plug back, give data on present productive zone and proposed new productive zone. If proposal is to drill or deepen directionally, give pertinent data on subsurface locations and measured and true vertical depths. Give blowout preventer program, if any.

## 24.

SIGNED

Christine Tomblase

TITLE

Geol. Secty

DATE

2-23-76

(This space for Federal or State office use)

PERMIT NO.

APPROVED BY

CONDITIONS OF APPROVAL, IF ANY:

MAR 1 1976

APPROVED BY

APPROVED BY

APPROVED DATE

THIS APPROVAL IS RESCINDED IF  
AND NOT COMMENCED WITHIN 3 MONTHS.  
EXPIRES JUN - 3 1976

DATE

\*See Instructions On Reverse Side

RECEIVED  
MAR 4  
1976  
D.C.C.  
ARTESIA, OFFICE

NE MEXICO OIL CONSERVATION COMMISSION  
WELL LOCATION AND ACREAGE DEDICATION PLAT

Form C-102  
Supersedes C-128  
Effective 1-1-65

All distances must be from the outer boundaries of the Section.

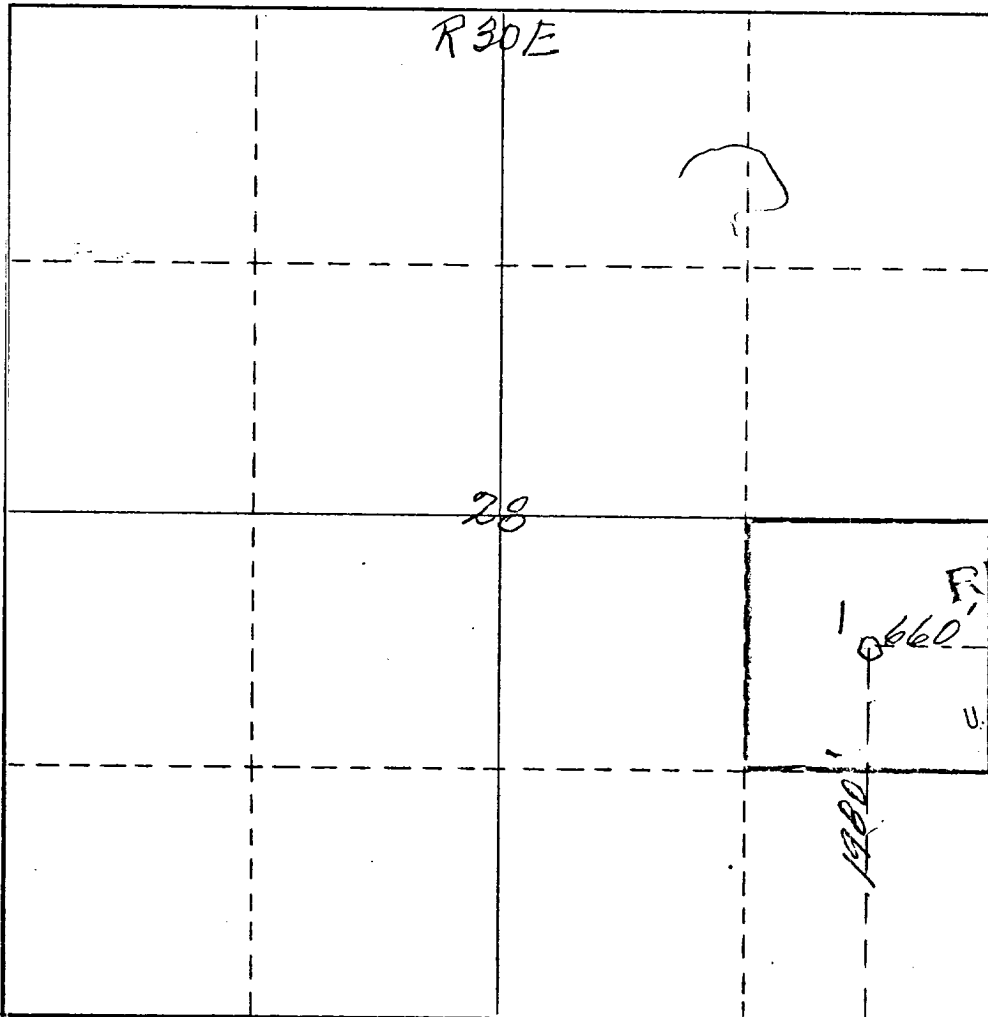
Operator <i>Yates Petroleum Corporation</i>			Lease <i>Federal "FR"</i>		Well No. <i>1</i>
Unit Letter <i>I</i>	Section <i>28</i>	Township <i>16 South</i>	Range <i>30 East</i>	County <i>Eddy</i>	
Actual Footage Location of Well: <i>1980</i> feet from the <i>South</i> line and <i>660</i> feet from the <i>East</i> line					
Ground Level Elev. <i>3765</i>	Producing Formation <i>Grayburg</i>		Pool <i>Square Lake (Gbg, S.A.)</i>	Dedicated Acreage: <i>40</i> Acres	

1. Outline the acreage dedicated to the subject well by colored pencil or hatchure marks on the plat below.
2. If more than one lease is dedicated to the well, outline each and identify the ownership thereof (both as to working interest and royalty).
3. If more than one lease of different ownership is dedicated to the well, have the interests of all owners been consolidated by communitization, unitization, force-pooling, etc?

☐ Yes ☐ No If answer is "yes," type of consolidation \_\_\_\_\_

If answer is "no," list the owners and tract descriptions which have actually been consolidated. (Use reverse side of this form if necessary.) \_\_\_\_\_

No allowable will be assigned to the well until all interests have been consolidated (by communitization, unitization, forced-pooling, or otherwise) or until a non-standard unit, eliminating such interests, has been approved by the Commission.



CERTIFICATION

I hereby certify that the information contained herein is true and complete to the best of my knowledge and belief.

*Eddie M. Mahfood*  
Name  
Eddie M. Mahfood

Position  
Engineer

Company  
Yates Pet. Corp.

Date  
2-23-76

RECEIVED  
I hereby certify that the well location shown on this plat is the same as the notes of actual surveys made by me or under my supervision, and that the same is true and correct to the best of my knowledge and belief.  
JAMES H. BROWN  
REGISTERED PROFESSIONAL ENGINEER AND LAND SURVEYOR  
NEW MEXICO

Date Surveyed  
*February 14 1976*  
Registered Professional Engineer and/or Land Surveyor

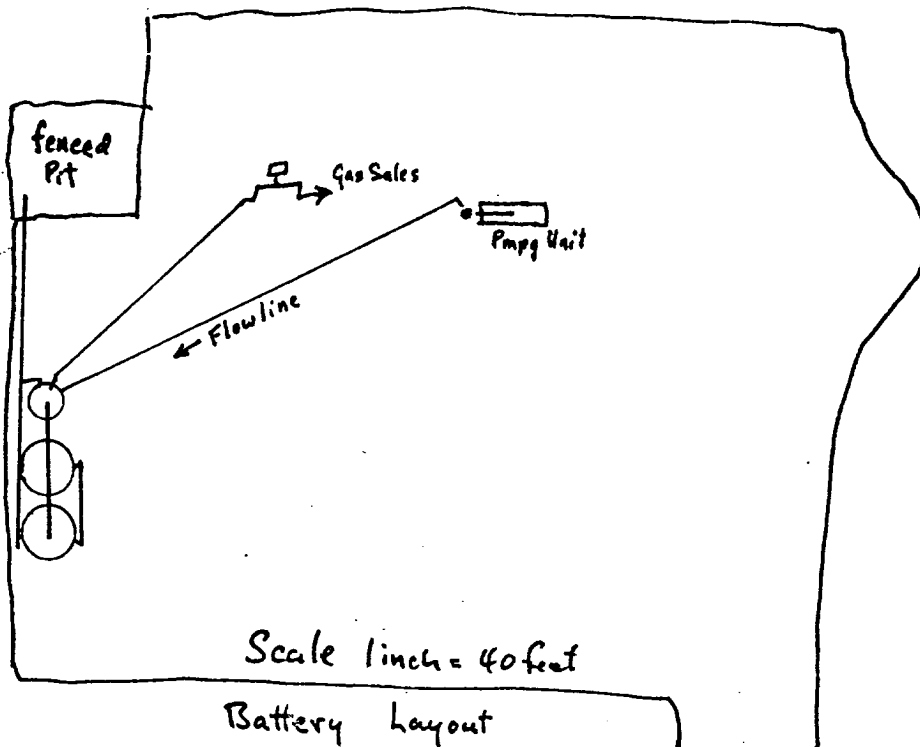
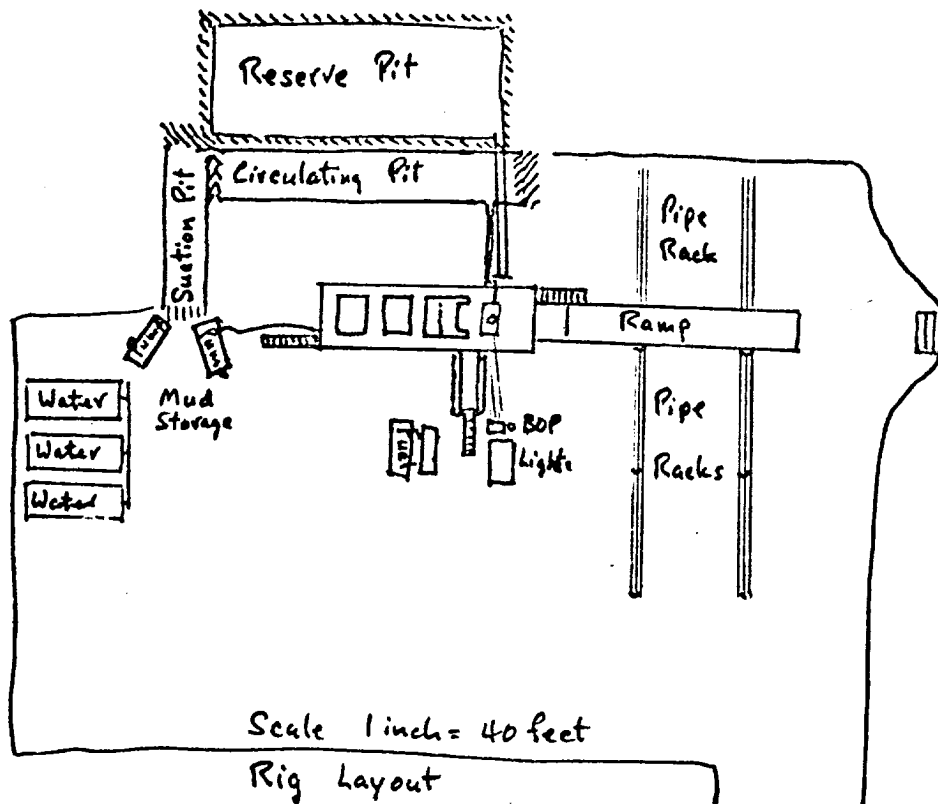
*James H. Brown*  
Certificate No. *542*

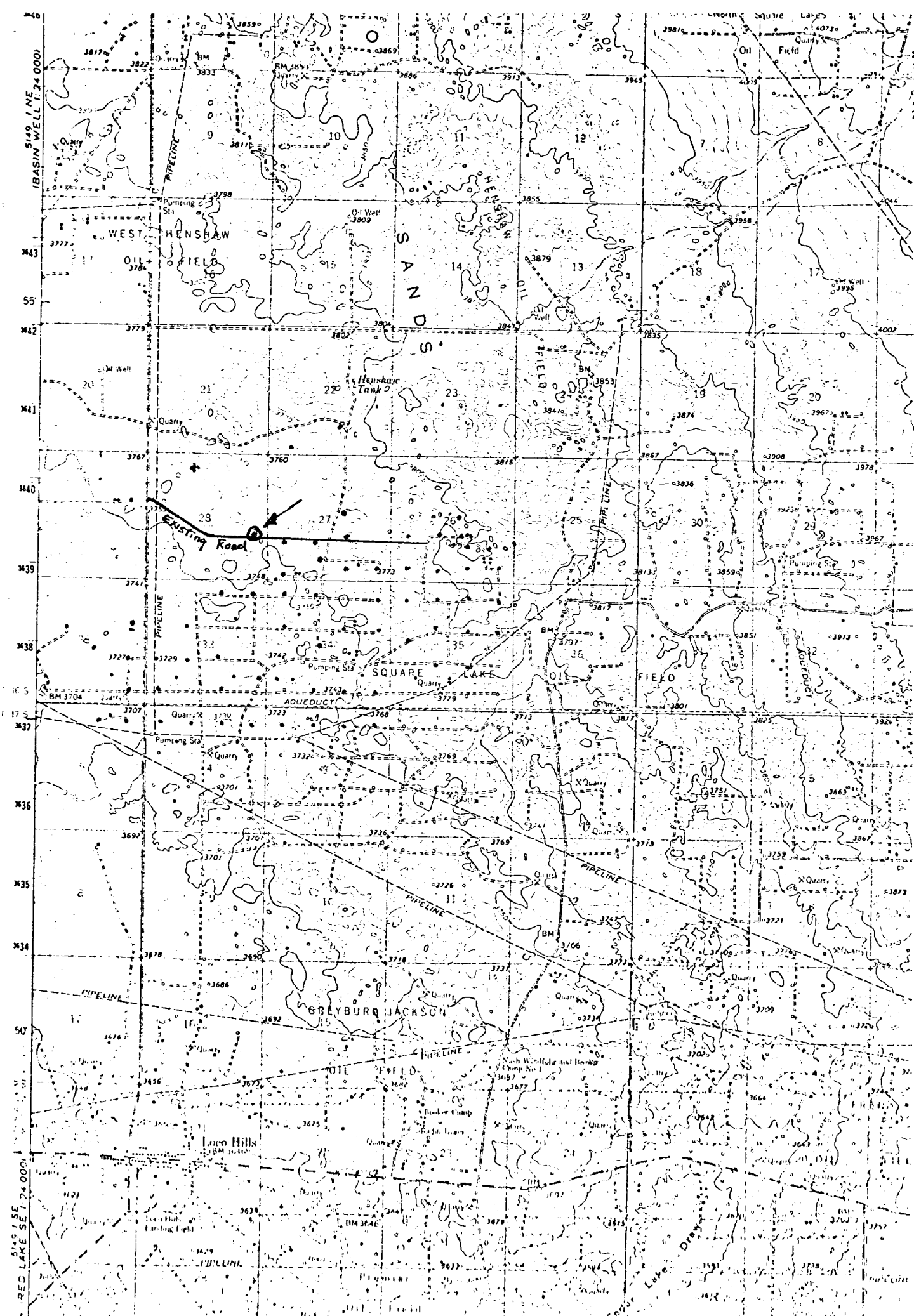
Yates Petroleum Corporation  
1980' FSL & 660' FEL of  
Section 28-16S-30E  
Eddy County, New Mexico  
Square Lake (Gbg. S.A.)

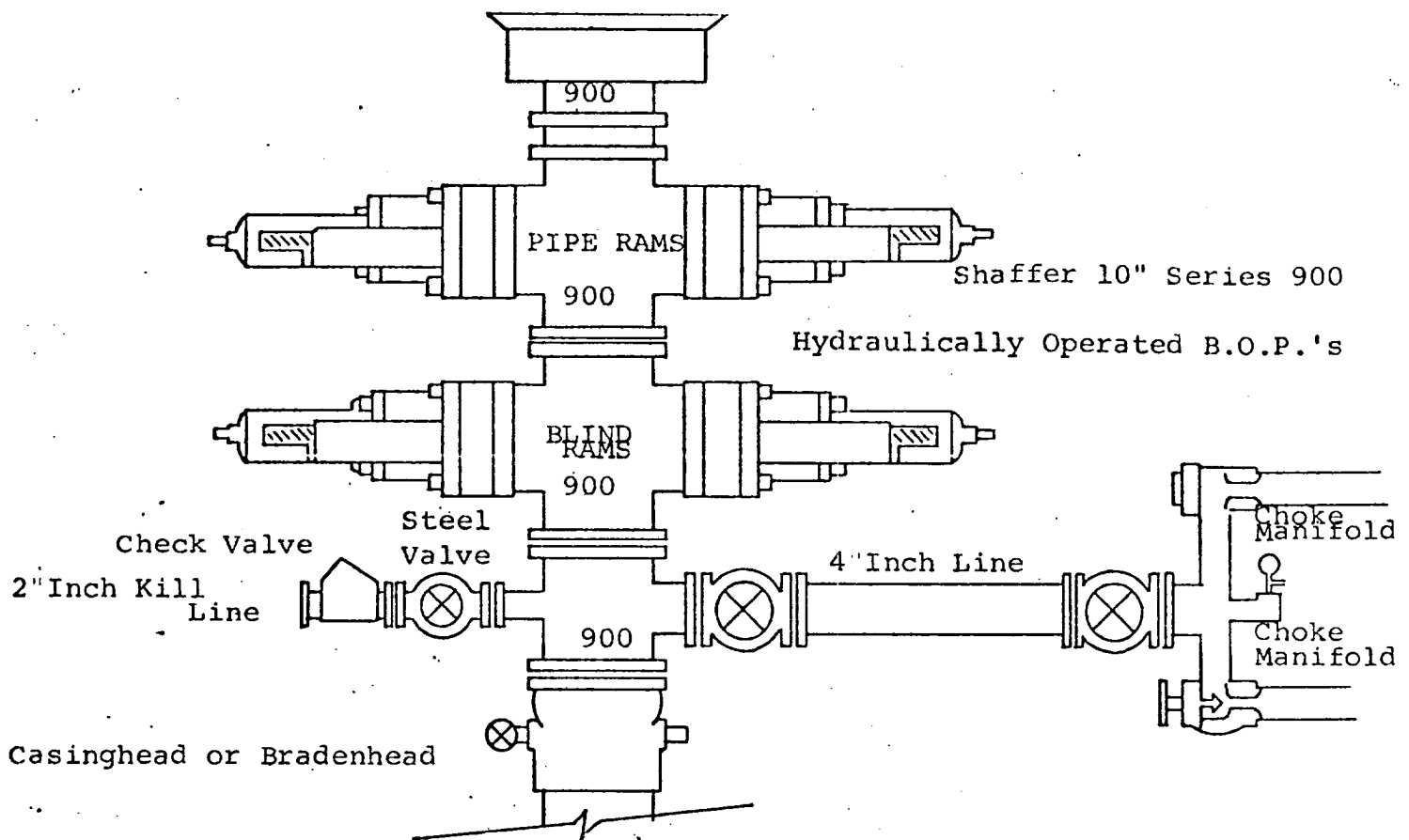
Development plan to accompany "Applications to Drill, Federal Lease".  
12-Point Plan.

1. EXISTING ROADS: See Plat (Exhibit A) Bladed county road, maintained,  
off of paved road, North of Loco Hills
2. PLANNED ACCESS ROADS: See Plat (Exhibit A) Location is approx. 150  
feet North of existing road; practically no new road needed.
3. LOCATION OF WELL: See Plat (Exhibit A) Extension to Square Field,  
approx. 1/4 mile west of Ledbetter-Heard A #2 well
4. LATERAL ROADS TO LOCATION: See Plat (Exhibit A) None needed
5. LOCATION OF TANK BATTERY & FLOWLINES: See Plat (Exhibit C) On  
Southwest cover of pad just off of existing road.
6. LOCATION & TYPES OF WATER SUPPLY: See Plat (Exhibit A) To be trucked  
from Loco Hills
7. METHODS FOR HANDLING WASTE DISPOSAL: See Sketch (Exhibit C) Mud in  
earthen pits; trash accumulated in barrels and burned or buried in pits.
8. LOCATION OF CAMPS: Not Applicable.
9. LOCATION OF AIRSTRIPS: Not Applicable.
10. LOCATION LAYOUT (rig, tanks, pits, racks, etc): See Sketch (Exhibit C)
11. PLANS FOR RESTORATION OF SURFACE: Pits will be fenced until dry, then,  
leveled. If dry hole, will clean location and level
12. OTHER ENVIRONMENT INFORMATION: Terrain is level with shifting sand  
dunes, some prairie grass, tumble weed, greasewood and small  
shrubby
13. Field Representative - Eddie M. Mahfood - Phone # 746-3558

YPC- Federal "FR" No. 1, 660 FEL 1980 FSL, Sec 28 16s 30E







THE FOLLOWING CONSTITUTE MINIMUM BLOWOUT PREVENTER REQUIREMENTS

1. All preventers to be hydraulically operated with secondary manual controls installed prior to drilling out from under casing.
2. Choke outlet to be a minimum of 4" diameter.
3. Kill line to be of all steel construction of 2" minimum diameter.
4. All connections from operating manifolds to preventers to be all steel, hole or tube a minimum of one inch in diameter.
5. The available closing pressure shall be at least 15% in excess of that required with sufficient volume to operate the B.O.P.'s.
6. All connections to and from preventer to have a pressure rating equivalent to that of the B.O.P.'s.
7. Inside blowout preventer to be available on rig floor.
8. Operating controls located a safe distance from the rig floor.
9. Hole must be kept filled on trips below intermediate casing. Operator not responsible for blowouts resulting from not keeping hole full.
10. D. P. float must be installed and used below zone of first gas intrusion.