

NO. OF COPIES RECEIVED	5
DISTRIBUTION	
SANTA FE	
FILE	
U.S.G.S.	
LAND OFFICE	
OPERATOR	

NEW MEXICO OIL CONSERVATION COMMISSION

RECEIVED

MAR 11 1976

38-015-21753

Form C-101  
Revised 1-1-65

APPLICATION FOR PERMIT TO DRILL, DEEPEN, OR PLUG BACK

1a. Type of Work ARTESIAN, OFFICE		5a. Indicate Type of Lease STATE <input type="checkbox"/> FEE <input checked="" type="checkbox"/>	
b. Type of Well OIL WELL <input checked="" type="checkbox"/> GAS WELL <input type="checkbox"/> OTHER <input type="checkbox"/>		5. State Oil & Gas Lease No.	
2. Name of Operator Yates Petroleum Corporation		7. Unit Agreement Name	
3. Address of Operator 207 South 4th Street - Artesia, NM 88210		8. Farm or Lease Name Achen Frey "DM"	
4. Location of Well UNIT LETTER I LOCATED 380' FEET FROM THE East LINE AND 1650 FEET FROM THE South LINE OF SEC. 14 TWP. 17S RGE. 25E NMPM		9. Well No. 6-Y	
		10. Field and Pool, or Wildcat Eagle Creek (S.A.)	
		12. County Eddy	
		19. Proposed Depth approx 1500'	
		19A. Formation San Andres	
		20. Rotary or C.T. Rotary	
21. Elevations (Show whether DF, RT, etc.) 3465'		21A. Kind & Status Plug. Bond Blanket	
		21B. Drilling Contractor Byrd Drilling Co.	
		22. Approx. Date Work will start As soon as approved	

PROPOSED CASING AND CEMENT PROGRAM

SIZE OF HOLE	SIZE OF CASING	WEIGHT PER FOOT	SETTING DEPTH	SACKS OF CEMENT	EST. TOP
15"	10-3/4"	32#	Approx 400'	Circulate	
9 1/2"	7"	20#	" 1190'	Circulate	
6 1/4"	4 1/2 & 5 1/2"	9.5 & 15.5#	" 1500'	125 sacks	

It is our intention to drill a San Andres test. 380' of surface casing will be set to shut off gravel and cavings, intermediate casing will be set 100' below the Artesian zone and if productive 4 1/2 and 5 1/2" production casing will be run, perforated and stimulated for production.

Mud Program: - FW Gel and LCM to 1190' or dry drill, FW to TD.

BOP Program: - BOP's will be installed on intermediate casing and will be tested daily.

APPROVAL VALID  
FOR 90 DAYS UNLESS  
DRILLING COMMENCED,

EXPIRES 6-11-76

IN ABOVE SPACE DESCRIBE PROPOSED PROGRAM: IF PROPOSAL IS TO DEEPEN OR PLUG BACK, GIVE DATA ON PRESENT PRODUCTIVE ZONE AND PROPOSED NEW PRODUCTIVE ZONE. GIVE BLOWOUT PREVENTER PROGRAM, IF ANY.

I hereby certify that the information above is true and complete to the best of my knowledge and belief.

Signed Christine Tomlinson Title Geol. Secty Date 3-10-76

(This space for State Use)

APPROVED BY W. A. Gussitt TITLE SUPERVISOR, DISTRICT II DATE MAR 11 1976

CONDITIONS OF APPROVAL, IF ANY:

Cement must be circulated to  
surface behind 12 3/4" & 7" casing

12 3/4" casing  
7" casing

NEW MEXICO OIL CONSERVATION COMMISSION  
WELL LOCATION AND ACREAGE DEDICATION PLAT

Form C-102  
Supersedes C-128  
Effective 1-1-65

All distances must be from the outer boundaries of the Section.

Operator <b>Yates Petroleum Corporation</b>		Lease <b>Achen Frey "DM"</b>		Well No. <b>6-Y</b>
Unit Letter <b>I</b>	Section <b>14</b>	Township <b>17S</b>	Range <b>25E</b>	County <b>Eddy</b>
Actual Footage Location of Well: <b>380</b> feet from the <b>East</b> line and <b>1650</b> feet from the <b>South</b> line				
Ground Level Elev: <b>3465'</b>	Producing Formation <b>San Andres</b>	Pool <b>Eagle Creek (S.A.)</b>	Dedicated Acreage: <b>40</b> Acres	

1. Outline the acreage dedicated to the subject well by colored pencil or hachure marks on the plat below.
2. If more than one lease is dedicated to the well, outline each and identify the ownership thereof (both as to working interest and royalty).
3. If more than one lease of different ownership is dedicated to the well, have the interests of all owners been consolidated by communitization, unitization, force-pooling, etc?

**RECEIVED**

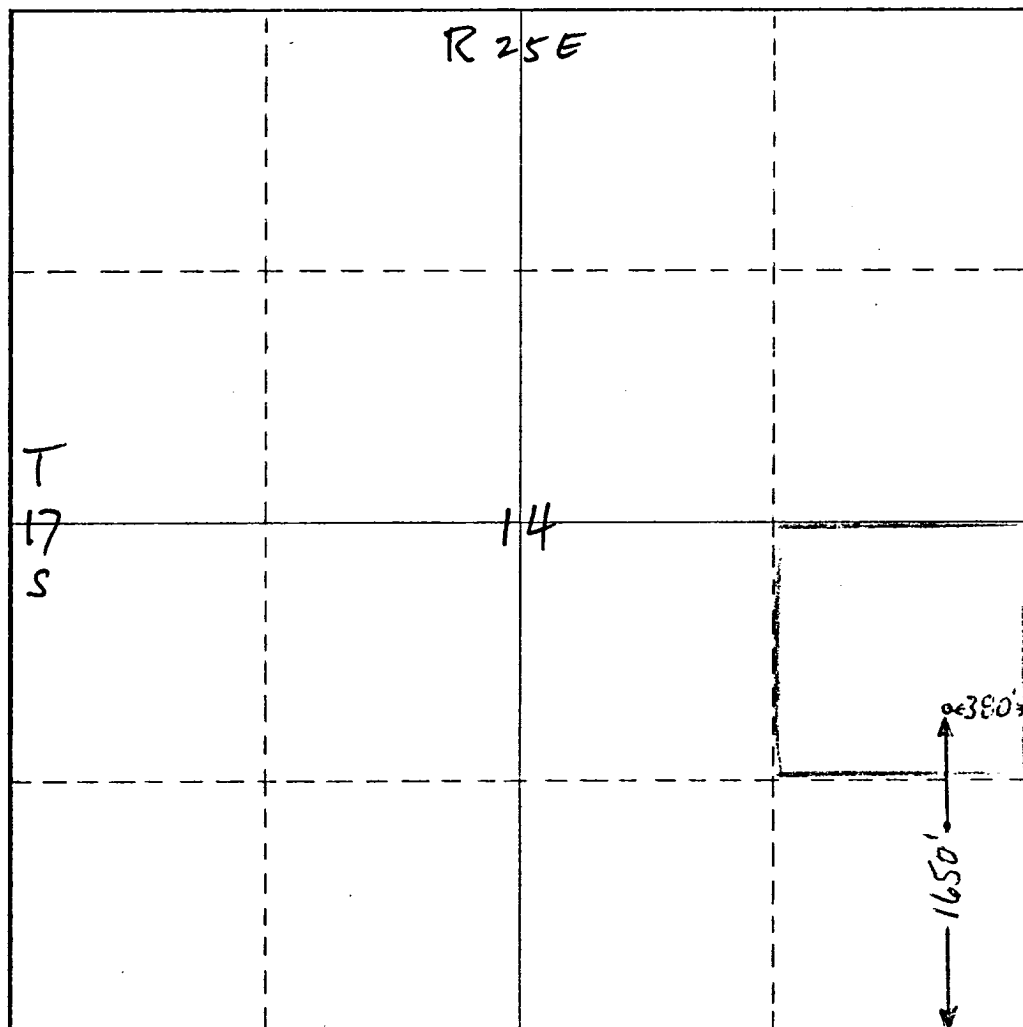
**MAR 15 1976**

☐ Yes ☐ No If answer is "yes," type of consolidation **U. G. G.**

**ARTESIA, OFFICE**

If answer is "no," list the owners and tract descriptions which have actually been consolidated. (Use reverse side of this form if necessary.)

No allowable will be assigned to the well until all interests have been consolidated (by communitization, unitization, forced-pooling, or otherwise) or until a non-standard unit, eliminating such interests, has been approved by the Commission.



**CERTIFICATION**

I hereby certify that the information contained herein is true and complete to the best of my knowledge and belief.

*Eddie M. Mahfood*

Name

**Eddie M. Mahfood**

Position

**Engineer**

Company

**Yates Petroleum Corp.**

Date

**3- 10-76**

I hereby certify that the well location shown on this plat was plotted from field notes of actual surveys made by me or under my supervision, and that the same is true and correct, to the best of my knowledge and belief.

*Eddie M. Mahfood*

**REFER TO ORIGINAL PLAT**

Date Surveyed

**3-10-76**

Registered Professional Engineer and/or Land Surveyor

*Eddie M. Mahfood*

Certificate No.

**4605**

0 330 660 990 1320 1650 1980 2310 2640 2000 1500 1000 500 0

NE MEXICO OIL CONSERVATION COMMISSION  
WELL LOCATION AND ACREAGE DEDICATION PLAT

Form C-102  
Supersedes C-128  
Effective 1-1-65

All distances must be from the outer boundaries of the Section.

Operator <b>Yates Petroleum Corporation</b>			Lease <b>Achen Frey "DM"</b>		Well No. <b>6-Y</b>
Unit Letter <b>I</b>	Section <b>14</b>	Township <b>17S</b>	Range <b>25E</b>	County <b>Eddy</b>	
Actual Footage Location of Well: <b>380</b> feet from the <b>East</b> line and <b>1650</b> feet from the <b>South</b> line					
Ground Level Elev: <b>3465'</b>	Producing Formation <b>San Andres</b>		Pool <b>Eagle Creek (S.A.)</b>		Dedicated Acreage: <b>40</b> Acres

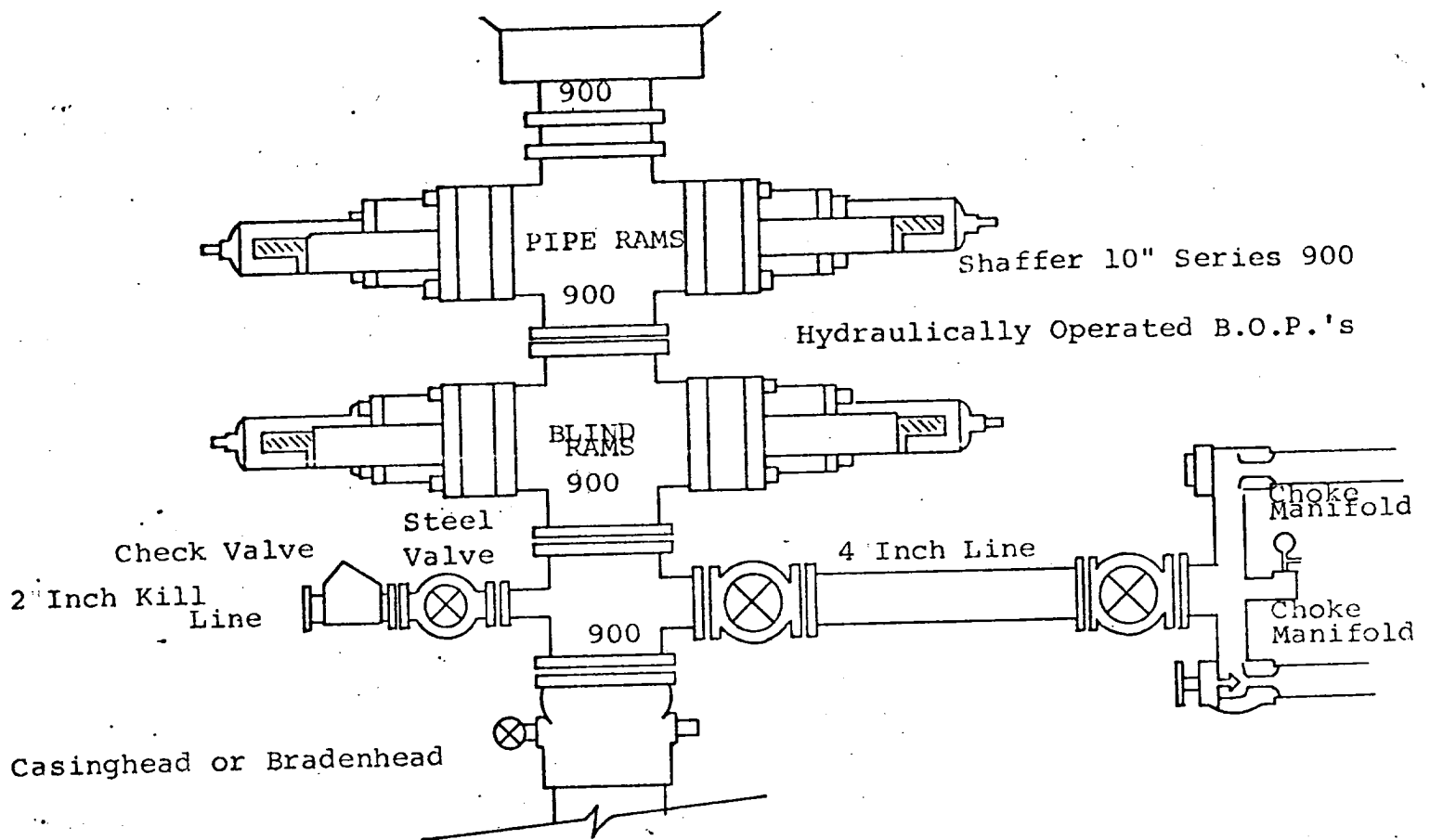
1. Outline the acreage dedicated to the subject well by colored pencil or hachure marks on the plat below.
2. If more than one lease is dedicated to the well, outline each and identify the ownership thereof (both as to working interest and royalty).
3. If more than one lease of different ownership is dedicated to the well, have the interests of all owners been consolidated by communitization, unitization, force-pooling, etc?

☐ Yes ☐ No If answer is "yes," type of consolidation \_\_\_\_\_

If answer is "no," list the owners and tract descriptions which have actually been consolidated. (Use reverse side of this form if necessary.) \_\_\_\_\_

No allowable will be assigned to the well until all interests have been consolidated (by communitization, unitization, forced-pooling, or otherwise) or until a non-standard unit, eliminating such interests, has been approved by the Commission.

	<p align="center"><b>CERTIFICATION</b></p> <p>I hereby certify that the information contained herein is true and complete to the best of my knowledge and belief.</p> <p><i>Eddie M. Mahfood</i></p> <p>Name <b>Eddie M. Mahfood</b></p> <p>Position <b>Engineer</b></p> <p>Company <b>Yates Petroleum Corp.</b></p> <p>Date <b>3- 10-76</b></p>
	<p>I hereby certify that the well location shown on this plat was plotted from field notes of actual surveys made by me or under my supervision, and that the same is true and correct to the best of my knowledge and belief.</p> <p align="center"><b>REFER TO ORIGINAL PLAT</b></p> <p>Date Surveyed _____</p> <p>Registered Professional Engineer and/or Land Surveyor _____</p> <p>Certificate No. _____</p>



THE FOLLOWING CONSTITUTE MINIMUM BLOWOUT PREVENTER REQUIREMENTS

1. All preventers to be hydraulically operated with secondary manual controls installed prior to drilling out from under casing.
2. Choke outlet to be a minimum of 4" diameter.
3. Kill line to be of all steel construction of 2" minimum diameter.
4. All connections from operating manifolds to preventers to be all steel hole or tube a minimum of one inch in diameter.
5. The available closing pressure shall be at least 15% in excess of that required with sufficient volume to operate the B.O.P.'s.
6. All connections to and from preventer to have a pressure rating equivalent to that of the B.O.P.'s.
7. Inside blowout preventer to be available on rig floor.
8. Operating controls located a safe distance from the rig floor.
9. Hole must be kept filled on trips below intermediate casing. Operator not responsible for blowouts resulting from not keeping hole full.
10. D. P. float must be installed and used below zone of first gas intrusion.