

NO. OF COPIES RECEIVED	5
DISTRIBUTION	
SANTA FE	1
FILE	1 ✓
U.S.G.S.	2
LAND OFFICE	
OPERATOR	1

NEW MEXICO OIL CONSERVATION COMMISSION

MAY 26 1976

O. C. C.
ARTESIA, OFFICE

30-015-21819

Form C-101
Revised 1-4-65

5A. Indicate Type of Lease STATE <input type="checkbox"/> FEE <input checked="" type="checkbox"/>	
5. State Oil & Gas Lease No.	
7. Unit Agreement Name	
8. Farm or Lease Name Jackson Estate BY	
9. Well No. 8	
10. Field and Pool, or Wildcat Eagle Creek (S.A.)	
12. County Eddy	
19. Proposed Depth 1500'	19A. Formation San Andres
20. Rotary or C.T. Rotary	
21. Elevations (Show whether DF, RT, etc.) 3545 GR	21A. Kind & Status Plug. Bond Blanket
21B. Drilling Contractor Byrd Drilling Co.	22. Approx. Date Work will start May 27, 1976

1a. Type of Work b. Type of Well OIL WELL <input checked="" type="checkbox"/> GAS WELL <input type="checkbox"/> OTHER <input type="checkbox"/> SINGLE ZONE <input checked="" type="checkbox"/> MULTIPLE ZONE <input type="checkbox"/>		2. Name of Operator Yates Petroleum Corporation ✓	
3. Address of Operator 207 So. 4th St., Artesia, NM 88210		4. Location of Well UNIT LETTER L LOCATED 430 FEET FROM THE West LINE 2310 South 2122 17S 25E AND FEET FROM THE LINE OF SEC. TWP. RGE. NMPM	
23.			

PROPOSED CASING AND CEMENT PROGRAM

SIZE OF HOLE	SIZE OF CASING	WEIGHT PER FOOT	SETTING DEPTH	SACKS OF CEMENT	EST. TOP
15	10-3/4	32-75	Approx 300	200	Circ.
9 1/2	7	20-23	Approx 1150	450	Circ.
6 1/2	4 1/2 - 5 1/2	9.5#-15.5#	Approx 1500	125	Circ.

Propose to drill San Andres test. Surface casing to shut off gravel & casing, intermediate will be set 100' below the Artesian zone. Production string will be tapered 4 1/2" and 5 1/2", cement circulated in all casing.

Mud Program: F.W. gel & LCM to 1150, fresh water to TD.

BOP Program: BOP's will be installed on the 7" casing & tested.

APPROVAL VALID
FOR 90 DAYS UNLESS
DRILLING COMMENCED,

EXPIRES 8-27-76

IN ABOVE SPACE DESCRIBE PROPOSED PROGRAM: IF PROPOSAL IS TO DEEPEN OR PLUG BACK, GIVE DATA ON PRESENT PRODUCTIVE ZONE AND PROPOSED NEW PRODUCTIVE ZONE. GIVE BLOWOUT PREVENTER PROGRAM, IF ANY.

I hereby certify that the information above is true and complete to the best of my knowledge and belief.

Signed Eddie H. Hays Title Engineer Date May 25, 1976

(This space for State Use)

APPROVED BY W. A. Gressett TITLE SUPERVISOR, DISTRICT II DATE MAY 27 1976

CONDITIONS OF APPROVAL, IF ANY:

Cement must be circulated to
surface behind 10 3/4" & 7" casing

Notify N.M.O.C.C. in sufficient
time to witness cementing
the 7" casing

N1 MEXICO OIL CONSERVATION COMMISSION
WELL LOCATION AND ACREAGE DEDICATION PLAT

Form C-102
Supersedes C-128
Effective 1-1-65

All distances must be from the outer boundaries of the Section.

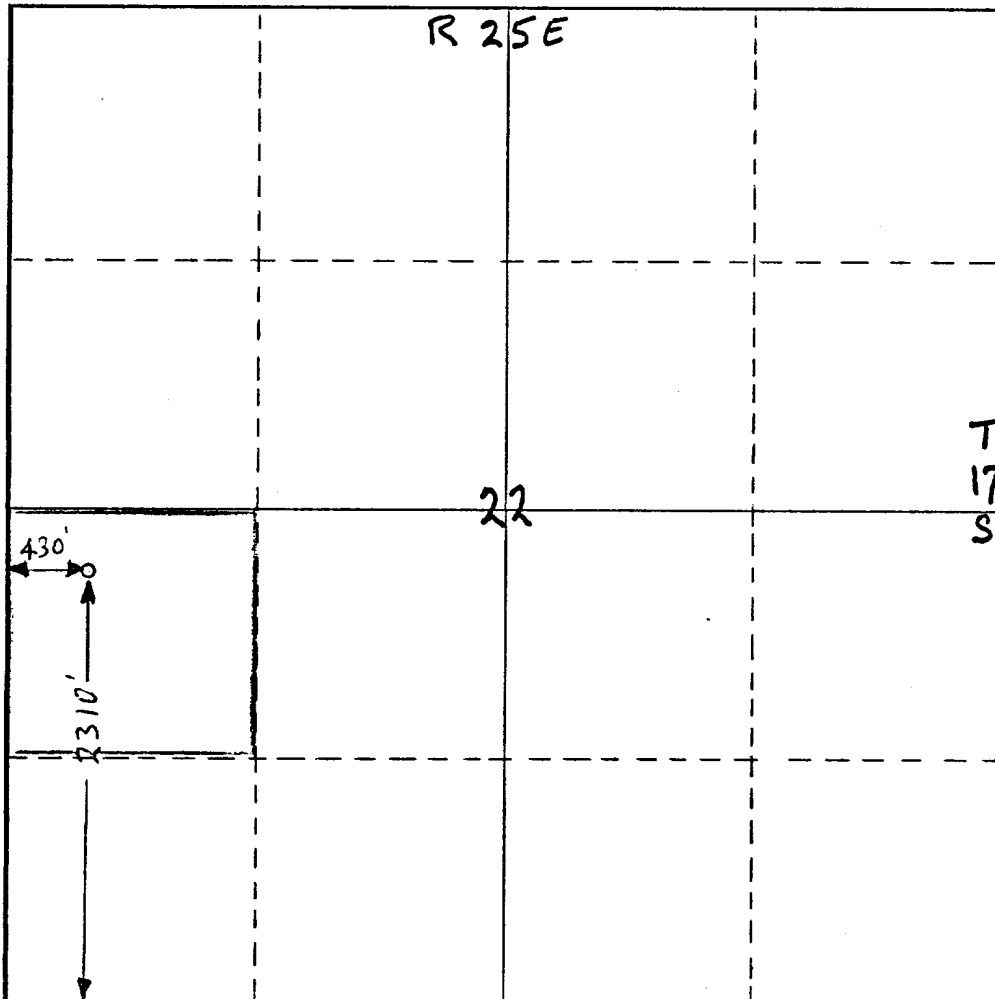
Operator Yates Petroleum Corp		Lease Jackson Estate "BY"		Well No. 8	
Unit Letter L	Section 22	Township 17-S	Range 25-E	County Eddy	
Actual Footage Location of Well: 430 feet from the West line and 2310 feet from the South line					
Ground Level Elev. 3545	Producing Formation San Andres		Pool Eagle Creek (S.A.)	Dedicated Acreage: 40 Acres	

1. Outline the acreage dedicated to the subject well by colored pencil or hachure marks on the plat below.
2. If more than one lease is dedicated to the well, outline each and identify the ownership thereof (both as to working interest and royalty).
3. If more than one lease of different ownership is dedicated to the well, have the interests of all owners been consolidated by communitization, unitization, force-pooling, etc?

☐ Yes ☐ No If answer is "yes," type of consolidation _____

If answer is "no," list the owners and tract descriptions which have actually been consolidated. (Use reverse side of this form if necessary.) _____

No allowance will be assigned to the well until all interests have been consolidated (by communitization, unitization, forced-pooling, or otherwise) or until a non-standard unit, eliminating such interests, has been approved by the Commission.



CERTIFICATION

I hereby certify that the information contained herein is true and complete to the best of my knowledge and belief.

Eddie M. Mahfood
Name

Eddie M. Mahfood

Position

Engineer

Company

Yates Petroleum Corp.

Date

May 25 1976

I hereby certify that the well location shown on this plat was plotted from field notes of actual surveys made by me or under my supervision, and that the same is true and correct to the best of my knowledge and belief.

Eddie M. Mahfood
Date Surveyed

May 25 1976

Registered Professional Engineer and/or Land Surveyor

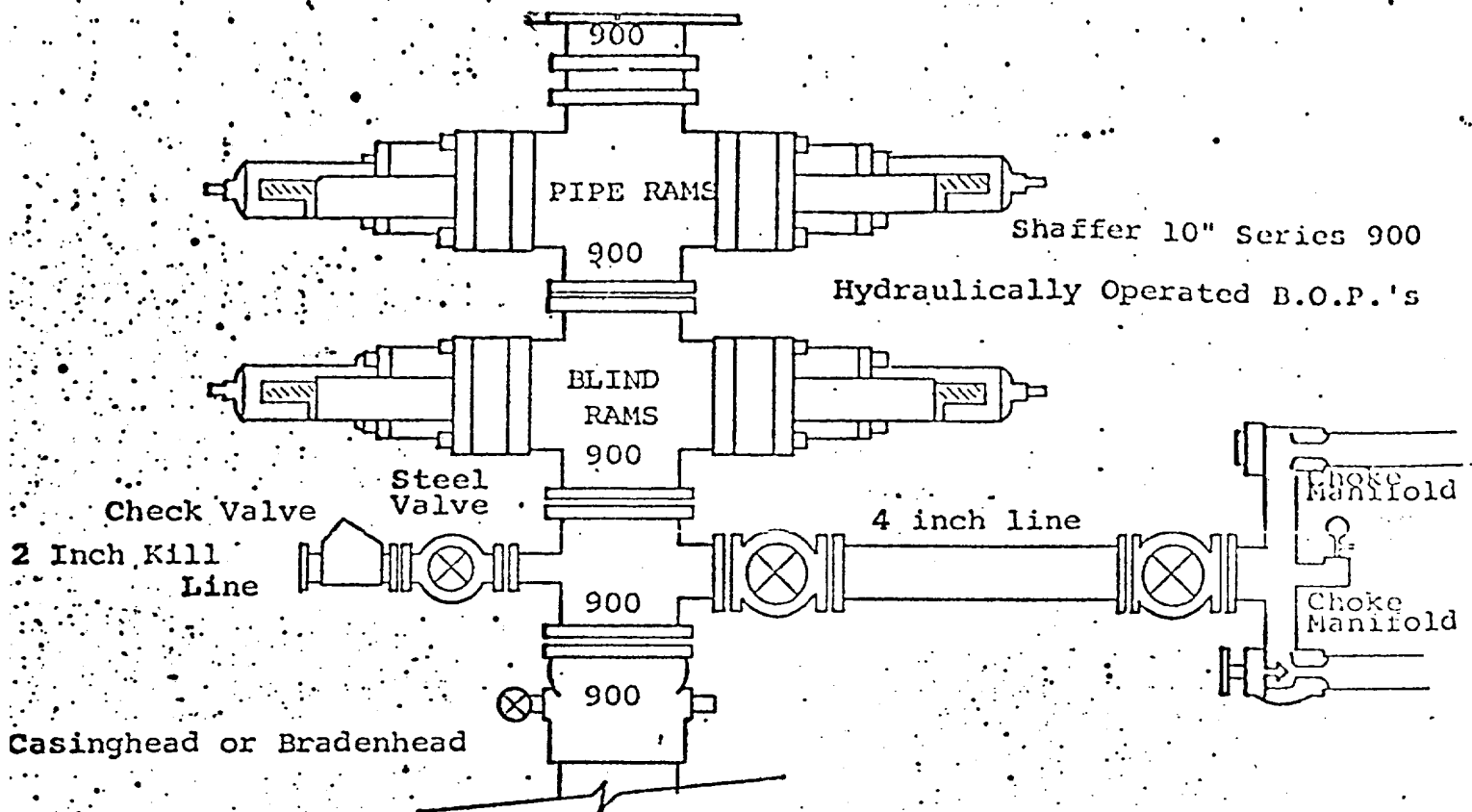
4605

Certificate No.

4605

0 330 660 990 1320 1650 1980 2310 2640 2000 1500 1000 500 0

DIAGRAMMA - SKETCH OF 3000 PSI BOP ASSEMBLY



THE FOLLOWING CONSTITUTE MINIMUM BLOWOUT PREVENTER REQUIREMENTS

1. All preventers to be hydraulically operated with secondary manual controls installed prior to drilling out from under casing.
2. Choke outlet to be a minimum of 4" diameter.
3. Kill line to be of all steel construction of 2" minimum diameter.
4. All connections from operating manifolds to preventers to be all steel hole or tube a minimum of one inch in diameter.
5. The available closing pressure shall be at least 15% in excess of that required with sufficient volume to operate the B.O.P.'s.
6. All Connections to and from preventer to have a pressure rating equivalent to that of the B.O.P.'s.
7. Inside blowout preventer to be available on rig floor.
8. Operating controls located a safe distance from the rig floor.
9. Hole must be kept filled on trips below intermediate casing. Operator not responsible for blowouts resulting from not keeping hole full.
10. D.P. float must be installed and used below zone of first gas intrusion.