

NO. OF COPIES RECEIVED	5
DISTRIBUTION	
SANTA FE	1
FILE	1 ✓
U.S.G.S.	2
LAND OFFICE	
OPERATOR	1

NEW MEXICO OIL CONSERVATION COMMISSION

RECEIVED

MAY 27 1976

30-015-21820

Form C-101
Revised 1-1-65

5A. Indicate Type of Lease STATE <input type="checkbox"/> FEE <input checked="" type="checkbox"/>
5. State Oil & Gas Lease No.
7. Unit Agreement Name
8. Farm or Lease Name McCaw "BT"
9. Well No. 3
10. Field and Pool, or Wildcat Eagle Creek (S.A.)
12. County Bddy
19. Proposed Depth Approx. 1500'
19A. Formation San Andres
20. Rotary or C.T. Rotary
21. Elevations (Show whether DF, RT, etc.) 3488' GR
21A. Kind & Status Plug. Bond Blanket
21B. Drilling Contractor Byrd Drilling Co.
22. Approx. Date Work will start AS soon as approved

APPLICATION FOR PERMIT TO DRILL, DEEPEN, OR PLUG BACK

1a. Type of Work b. Type of Well OIL WELL <input checked="" type="checkbox"/> GAS WELL <input type="checkbox"/> OTHER <input type="checkbox"/>	DRILL <input checked="" type="checkbox"/> DEEPEN <input type="checkbox"/> PLUG BACK <input type="checkbox"/>
2. Name of Operator Yates Petroleum Corporation	ARTESIA, OFFICE
3. Address of Operator 207 South 4th Street - Artesia, NM 88210	SINGLE ZONE <input type="checkbox"/> MULTIPLE ZONE <input type="checkbox"/>
4. Location of Well UNIT LETTER A LOCATED 990 FEET FROM THE North LINE AND 330 FEET FROM THE East LINE OF SEC. 14 TWP. 17S RGE. 25E NMPM	
21. Elevations (Show whether DF, RT, etc.) 3488' GR	21A. Kind & Status Plug. Bond Blanket
21B. Drilling Contractor Byrd Drilling Co.	22. Approx. Date Work will start AS soon as approved

23. PROPOSED CASING AND CEMENT PROGRAM

SIZE OF HOLE	SIZE OF CASING	WEIGHT PER FOOT	SETTING DEPTH	SACKS OF CEMENT	EST. TOP
15"	10-3/4"	32#	Approx. 300'	Circulate	
9 1/2"	7"	20#	" 1180'	Circulate	
6 1/4"	5 1/2 & 4 1/2"	10.5 & 15.5#	" 1500'	Circulate	

Propose to drill a San Andres test. Approx. 300' of surface casing will be set to shut off gravel and caving, 7" casing will be set 100' below the Artesian Zone. A tapered string will be set for production, perforated and Sand Frac'd as needed for production.

Mud Program: - FW gel and LCM to 1180', FW to TD.

BOP Program: - BOP's will be installed on the intermediate casing and tested daily.

NOTE: - Drilling within 300' of dwelling.

Property owner has signed a statement to the effect that he has no objection to the drilling of the well at this distance from his dwelling.

APPROVAL VALID
FOR 90 DAYS UNLESS
DRILLING COMMENCED,

IN ABOVE SPACE DESCRIBE PROPOSED PROGRAM: IF PROPOSAL IS TO DEEPEN OR PLUG BACK, GIVE DATA ON PRESENT PRODUCTIVE ZONE AND PROPOSED NEW PRODUCTIVE ZONE. GIVE BLOWOUT PREVENTER PROGRAM, IF ANY.

I hereby certify that the information above is true and complete to the best of my knowledge and belief.

Signed Christie Tomlinson Title Geol. Secty Date 5-27-76

(This space for State Use)

APPROVED BY W. A. Gussott TITLE SUPERVISOR, DISTRICT II DATE MAY 28 1976

CONDITIONS OF APPROVAL, IF ANY:

Cement must be circulated to surface behind 10 3/4" + 7" casing

Notify N.M.O.C.C. in sufficient time to witness cementing the 7" casing

NEW MEXICO OIL CONSERVATION COMMISSION
WELL LOCATION AND ACREAGE DEDICATION PLAT

Form C-102
Supersedes C-128
Effective 1-1-65

All distances must be from the outer boundaries of the Section.

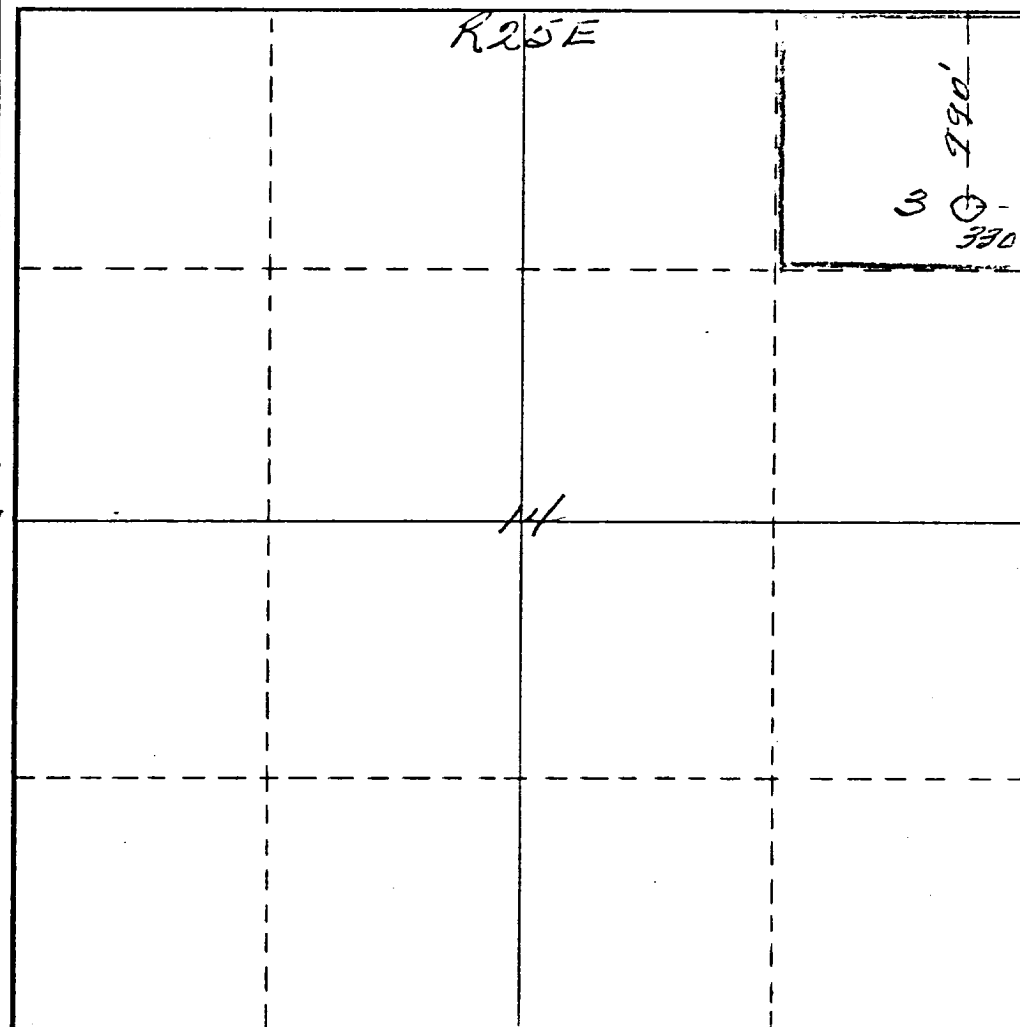
Operator <i>Yates Petroleum Corp.</i>		Lease <i>McCann "BT"</i>		Well No. <i>3</i>
Unit Letter <i>A</i>	Section <i>14</i>	Township <i>17 South</i>	Range <i>25 East</i>	County <i>Eddy</i>
Actual Footage Location of Well: <i>990</i> feet from the <i>North</i> line and <i>330</i> feet from the <i>East</i> line				
Ground Level Elev. <i>3488</i>	Producing Formation <i>San Andres</i>	Pool <i>Eagle Creek (S.A.)</i>	Dedicated Acreage: <i>40</i> Acres	

1. Outline the acreage dedicated to the subject well by colored pencil or hachure marks on the plat below.
2. If more than one lease is dedicated to the well, outline each and identify the ownership thereof (both as to working interest and royalty).
3. If more than one lease of different ownership is dedicated to the well, have the interests of all owners been consolidated by communitization, unitization, force-pooling, etc?

☒ Yes ☐ No If answer is "yes," type of consolidation *Being Communitized*

If answer is "no," list the owners and tract descriptions which have actually been consolidated. (Use reverse side of this form if necessary.) _____

No allowable will be assigned to the well until all interests have been consolidated (by communitization, unitization, forced-pooling, or otherwise) or until a non-standard unit, eliminating such interests, has been approved by the Commission.



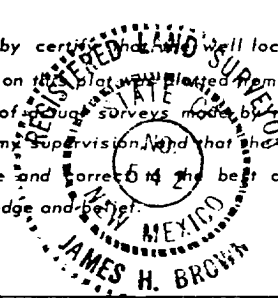
CERTIFICATION

I hereby certify that the information contained herein is true and complete to the best of my knowledge and belief.

Name
Eddie M. Mahfood
Position
Engineer
Company
Yates Petroleum Corp.

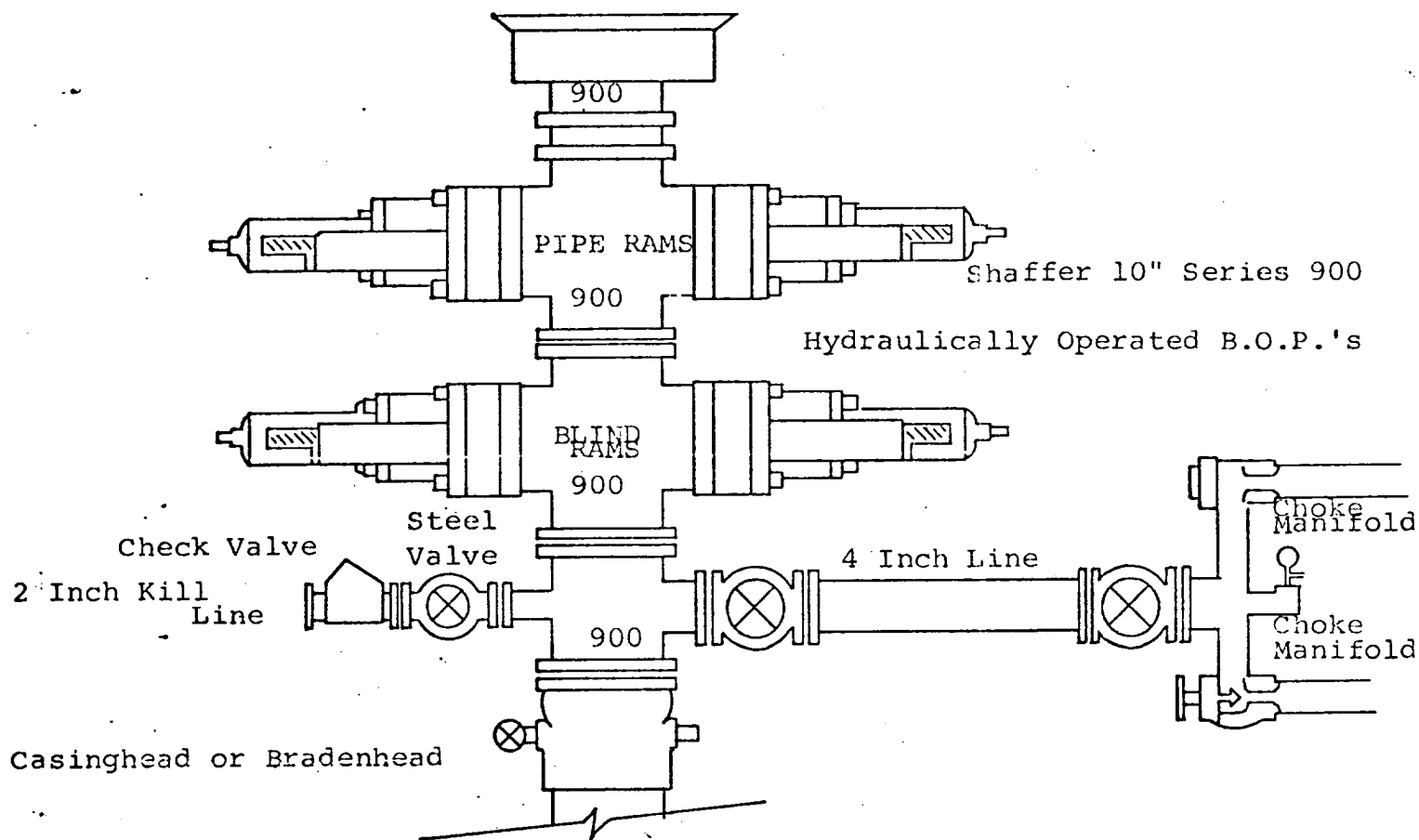
Date
5-27-76

I hereby certify that the well location shown on this plat was plotted from field notes of accurate surveys made by me or under my supervision and that the same is true and correct to the best of my knowledge and belief.



Date Surveyed
April 20th 1976
Registered Professional Engineer
and/or Land Surveyor

James H. Brown
Certificate No. *542*



THE FOLLOWING CONSTITUTE MINIMUM BLOWOUT PREVENTER REQUIREMENTS

1. All preventers to be hydraulically operated with secondary manual controls installed prior to drilling out from under casing.
2. Choke outlet to be a minimum of 4" diameter.
3. Kill line to be of all steel construction of 2" minimum diameter.
4. All connections from operating manifolds to preventers to be all steel hole or tube a minimum of one inch in diameter.
5. The available closing pressure shall be at least 15% in excess of that required with sufficient volume to operate the B.O.P.'s.
6. All connections to and from preventer to have a pressure rating equivalent to that of the B.O.P.'s.
7. Inside blowout preventer to be available on rig floor.
8. Operating controls located a safe distance from the rig floor.
9. Hole must be kept filled on trips below intermediate casing. Operator not responsible for blowouts resulting from not keeping hole full.
10. D. P. float must be installed and used below zone of first gas intrusion.