

NO. OF COPIES RECEIVED	5
DISTRIBUTION	
SANTA FE	1
FILE	1 ✓
U.S.G.S.	2
LAND OFFICE	
OPERATOR	1

NEW MEXICO OIL CONSERVATION COMMISSION

RECEIVED

MAY 27 1976

30-05-21821

Form C-101
Revised 1-1-65

5A. Indicate Type of Lease	
STATE <input type="checkbox"/>	FEE <input checked="" type="checkbox"/>
5. State Oil & Gas Lease No.	
7. Unit Agreement Name	
8. Farm or Lease Name J Lazy J	
9. Well No. 13	
10. Field and Pool, or Wildcat Eagle Creek S.A.	
12. County Bddy	
19. Proposed Depth Approx. 1500	19A. Formation San Andres
20. Rotary or C.T. Rotary	
21. Elevations (Show whether DF, RT, etc.) 3522' GR	22. Approx. Date Work will start As soon as approved

1a. Type of Work	
DRILL <input checked="" type="checkbox"/>	DEEPEEN <input type="checkbox"/> PLUG BACK <input type="checkbox"/>
b. Type of Well	
OIL WELL <input checked="" type="checkbox"/>	GAS WELL <input type="checkbox"/> OTHER <input type="checkbox"/>
2. Name of Operator Yates Petroleum Corporation ✓	
3. Address of Operator 207 South 4th Street - Artesia, NM 88210	
4. Location of Well	
UNIT LETTER G	LOCATED 1980 FEET FROM THE North LINE
AND 1980 FEET FROM THE East	LINE OF SEC. 22 TWP. 17S RGE. 25E NMPM
21. Elevations (Show whether DF, RT, etc.) 3522' GR	
21A. Kind & Status Plug. Bond Blanket	
21B. Drilling Contractor Byrd Drilling Co.	

PROPOSED CASING AND CEMENT PROGRAM

SIZE OF HOLE	SIZE OF CASING	WEIGHT PER FOOT	SETTING DEPTH	SACKS OF CEMENT	EST. TOP
15"	10-3/4"	32#	Approx. 300'	Circulate	
9 1/2"	7"	20#	" 1150'	Circulate	
6 1/4"	4 1/2 & 5 1/2"	10.5 & 15.5#	" TD	Circulate	

Propose to drill a San Andres test. Approx. 300' of 10-3/4" casing will be run, if needed, and cemented to the surface to shut off surface gravel and cavings, 7" casing will be run 100' below the Artesian Zone, cemented to surface. A tapered string of production casing will be run and cemented, perforated and San Frac'd for completion

Mud Program: - Fresh water mud w/LCM from surface to 1150', fresh water to total depth.

BOP Program: - BOP's to be installed on 7" casing and tested daily.

Note: - This well will not be put on production until secondary recovery project is approved.

APPROVAL VALID
FOR 90 DAYS UNLESS
DRILLING COMMENCED,

8-28-76

IN ABOVE SPACE DESCRIBE PROPOSED PROGRAM: IF PROPOSAL IS TO DEEPEEN OR PLUG BACK, GIVE DATA ON PRESENT PRODUCTION ZONE AND PROPOSED NEW PRODUCTION ZONE. GIVE BLOWOUT PREVENTER PROGRAM, IF ANY.

I hereby certify that the information above is true and complete to the best of my knowledge and belief.

Signed Christine Tomlinson Title Geol. Secty Date 5-27-76

(This space for State Use)

APPROVED BY W.A. Gussett TITLE SUPERVISOR, DISTRICT II DATE MAY 28 1976

CONDITIONS OF APPROVAL, IF ANY:
No allowable well be assigned until approved after notice & hearing

Notify N.M.O.C.C. in sufficient time to witness cementing the 7" casing
Cement must be circulated to surface behind 10 3/4" & 7" casing

NEW MEXICO OIL CONSERVATION COMMISSION
WELL LOCATION AND ACREAGE DEDICATION PLAT

Form C-102
Supersedes C-128
Effective 1-1-65

All distances must be from the outer boundaries of the Section.

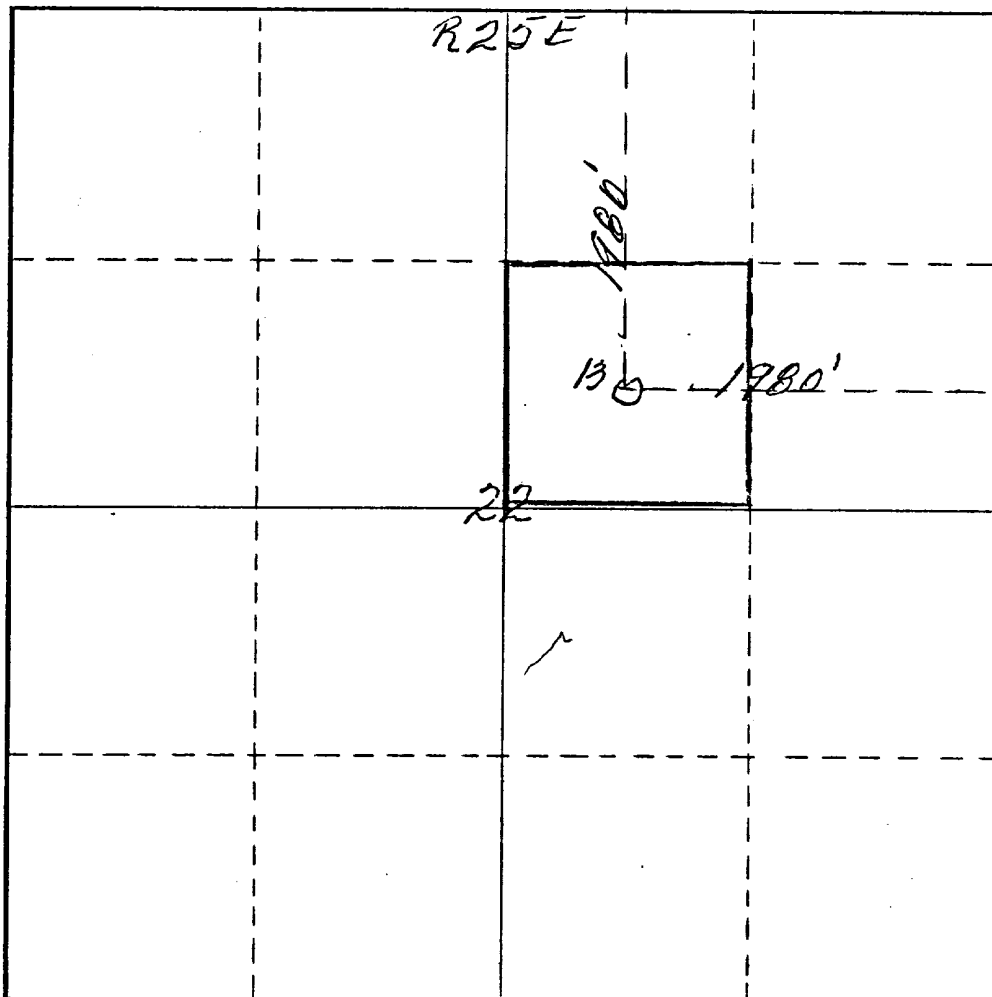
Operator <i>Yates Petroleum Corp.</i>			Lease <i>Lazy J</i>		Well No. <i>13</i>
Unit Letter <i>G</i>	Section <i>22</i>	Township <i>17 South</i>	Range <i>25 East</i>	County <i>Eddy</i>	
Actual Footage Location of Well: <i>1980</i> feet from the <i>North</i> line and <i>1980</i> feet from the <i>East</i> line					
Ground Level Elev. <i>3522</i>	Producing Formation <i>San Andres</i>		Pool <i>Eagle Creek S.A./</i>	Dedicated Acreage: <i>40</i> Acres	

1. Outline the acreage dedicated to the subject well by colored pencil or hachure marks on the plat below.
2. If more than one lease is dedicated to the well, outline each and identify the ownership thereof (both as to working interest and royalty).
3. If more than one lease of different ownership is dedicated to the well, have the interests of all owners been consolidated by communitization, unitization, force-pooling, etc?

☐ Yes ☐ No If answer is "yes," type of consolidation _____

If answer is "no," list the owners and tract descriptions which have actually been consolidated. (Use reverse side of this form if necessary.) _____

No allowable will be assigned to the well until all interests have been consolidated (by communitization, unitization, forced-pooling, or otherwise) or until a non-standard unit, eliminating such interests, has been approved by the Commission.



CERTIFICATION

I hereby certify that the information contained herein is true and complete to the best of my knowledge and belief.

Eddie M. Mahfood
Name
Eddie M. Mahfood

Position
Engineer

Company
Yates Pet. Corporation

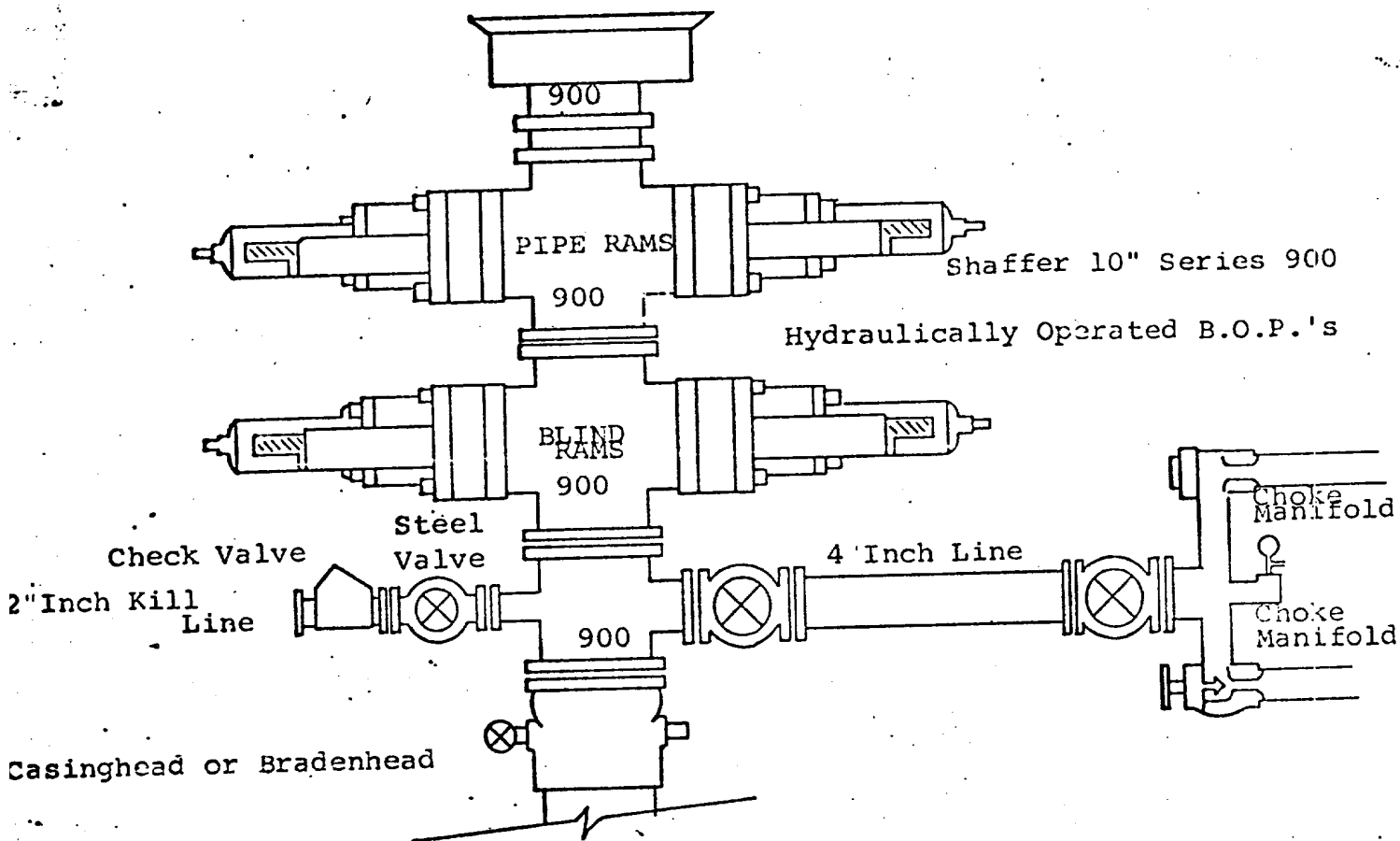
Date
5-7-76

I hereby certify that the well location shown on this plat was taken from field notes of actual surveys made by me or under my supervision and that the same is true and correct to the best of my knowledge and belief.

Date Surveyed

May 7th 1976
Registered Professional Engineer
and/or Land Surveyor

James H. Brown
Certificate No.
542



THE FOLLOWING CONSTITUTE MINIMUM BLOWOUT PREVENTER REQUIREMENTS

1. All preventers to be hydraulically operated with secondary manual controls installed prior to drilling out from under casing.
2. Choke outlet to be a minimum of 4" diameter.
3. Kill line to be of all steel construction of 2" minimum diameter.
4. All connections from operating manifolds to preventers to be all steel hole or tube a minimum of one inch in diameter.
5. The available closing pressure shall be at least 15% in excess of that required with sufficient volume to operate the B.O.P.'s.
6. All connections to and from preventer to have a pressure rating equivalent to that of the B.O.P.'s.
7. Inside blowout preventer to be available on rig floor.
8. Operating controls located a safe distance from the rig floor.
9. Hole must be kept filled on trips below intermediate casing. Operator not responsible for blowouts resulting from not keeping hole full.
10. D. P. float must be installed and used below zone of first gas intrusion.