

UNITED STATES
DEPARTMENT OF THE INTERIOR

GEOLOGICAL SURVEY

APPLICATION FOR PERMIT TO DRILL, DEEPEN, OR PLUG BACK

1a. TYPE OF WORK

DRILL ☒DEEPEN ☐PLUG BACK ☐

b. TYPE OF WELL

OIL
WELL ☐GAS
WELL ☒

OTHER

SINGLE
ZONE ☒MULTIPLE
ZONE ☐

2. NAME OF OPERATOR

Yates Petroleum Corporation

3. ADDRESS OF OPERATOR

207 South 4th Street - Artesia, NM 88210

4. LOCATION OF WELL (Report location clearly and in accordance with any State requirements.)*

At surface

660' FSL & 660' FBL of Sec. 32-17S-25E

At proposed prod. zone

14. DISTANCE IN MILES AND DIRECTION FROM NEAREST TOWN OR POST OFFICE*

6 miles SW of Artesia, NM

16. DISTANCE FROM PROPOSED*

660'

LOCATION TO NEAREST

PROPERTY OR LEASE LINE, FT.

(Also to nearest dril. unit line, if any)

18. NO. OF ACRES IN LEASE

160

17. NO. OF ACRES ASSIGNED
TO THIS WELL

320

18. DISTANCE FROM PROPOSED LOCATION*
TO NEAREST WELL, DRILLING, COMPLETED,
OR APPLIED FOR, ON THIS LEASE, FT.19. PROPOSED DEPTH
Approx. 8700'20. ROTARY OR CABLE TOOLS
Rotary

21. ELEVATIONS (Show whether DF, RT, GR, etc.)

3588' GR

22. APPROX. DATE WORK WILL START*

As soon as approved

23.

PROPOSED CASING AND CEMENTING PROGRAM

SIZE OF HOLE	SIZE OF CASING	WEIGHT PER FOOT	SETTING DEPTH	QUANTITY OF CEMENT
17½"	13-3/8"	48#	Approx 250'	150 sx Circulate
12½-11"	8-5/8"	24#	" 1000'	450 sx Circulate
7-7/8"	5½ or 4½"	15.5-17 or 10.5-11.6#	TD	250 sx.

Propose to drill to the Mississippi lime and test intermediate horizon. Approx. 250' of 13-3/8" casing will be set if needed to protect from surface gravel, and 8-5/8" casing will be set 100' below the Artesian Zone. If commercial 4½ or 5½" casing will be run, perforated and treated for production.

Mud Program: - FW gel to 1000', water to 6200', flosal-driskpak w/2% KCL to TD.

BOP Program: - BOP's and hydrill to be installed on 8-5/8" casing, pipe rams tested daily and blind rams on trips.

IN ABOVE SPACE DESCRIBE PROPOSED PROGRAM: If proposal is to deepen or plug back, give data on present productive zone and proposed new productive zone. If proposal is to drill or deepen directionally, give pertinent data on subsurface locations and measured and true vertical depths. Give blowout preventer program, if any.

24.

SIGNED

Christine L. Lamm

TITLE

Geol. Secty

DATE

4-22-76

(This space for Federal or State office use)

RECEIVED

JUN 8 1976

TITLE

DATE

APPROVED

APPROVED BY

H. L. BEEKHUIS

ACTING DISTRICT ENGINEER

THIS APPROVAL IS RESCINDED
IF NOT COMMENCED WITHIN 3 MONTHS.

SEP 7 - 1976

See Instructions On Reverse Side

DECLARED WATER BASIN
CASING MUST BE CIRCULATEDRECEIVED
APR 23 1976
U.S. GEOLOGICAL SURVEY
ARTESIA, NEW MEXICONOTICE TO THE PUBLIC
IN SUFFICIENT TIME TO
CASING.

Form C-102
Supersedes C-128
Effective 1-1-65

Operator <i>Yates Petroleum Corp</i>		Lease <i>Federal "GC" Conn</i>		Well No. <i>1</i>
Unit Letter <i>P</i>	Section <i>32</i>	Township <i>17 South</i>	Range <i>25 East</i>	County <i>Eddy</i>
Actual Footage Location of Well: <i>660</i> feet from the <i>South</i> line and <i>640</i> feet from the <i>East</i> line				
Ground Level Elev. <i>3588</i>	Producing Formation <i>Morrow</i>	Pool <i>Richard-Knob</i>	Dedicated Acreage: <i>320</i> Acres	

- ☒ Yes ☐ No If answer is "yes," type of consolidation Being Communitized

No allowable will be assigned to the well until all interests have been consolidated (by communitization, unitization, forced-pooling, or otherwise) or until a non-standard unit, eliminating such interests, has been approved by the Commission.

A hand-drawn map on a grid. The grid consists of solid lines forming a 2x2 square and dashed lines forming a 4x4 grid. A solid line, representing a coastline, runs horizontally across the middle of the grid. The coastline is labeled 'Welch' and 'YPC' in the middle-right section. In the top-right section, 'R25E' and 'YPC' are written. In the bottom-right section, '3693' and 'U.S.' are written. On the right side, there are two '660' labels, one above the other, with a small circle between them.

I hereby certify that the information contained herein is true and complete to the best of my knowledge and belief.

best of my knowledge and belief.

Eddene M. Washford
Name

Name Eddie M. Mahfood

Position
Engineer

Company
Yates Petroleum Corp.

Date 4-22-76

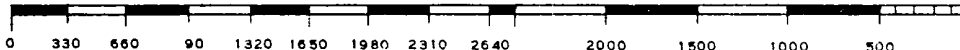
RECEIVED

RECEIVED
In the early 1950's when the well location
shown on the plat was plotted from field
APR 27 1966
notes of a survey made by me or
under my supervision and that the same
U. S. GEOLOGICAL SURVEY
ARTESIA, NEW MEXICO
is the best of my

Date Surveyed April 22nd 1976

Registered Professional Engineer
and/or Land Surveyor

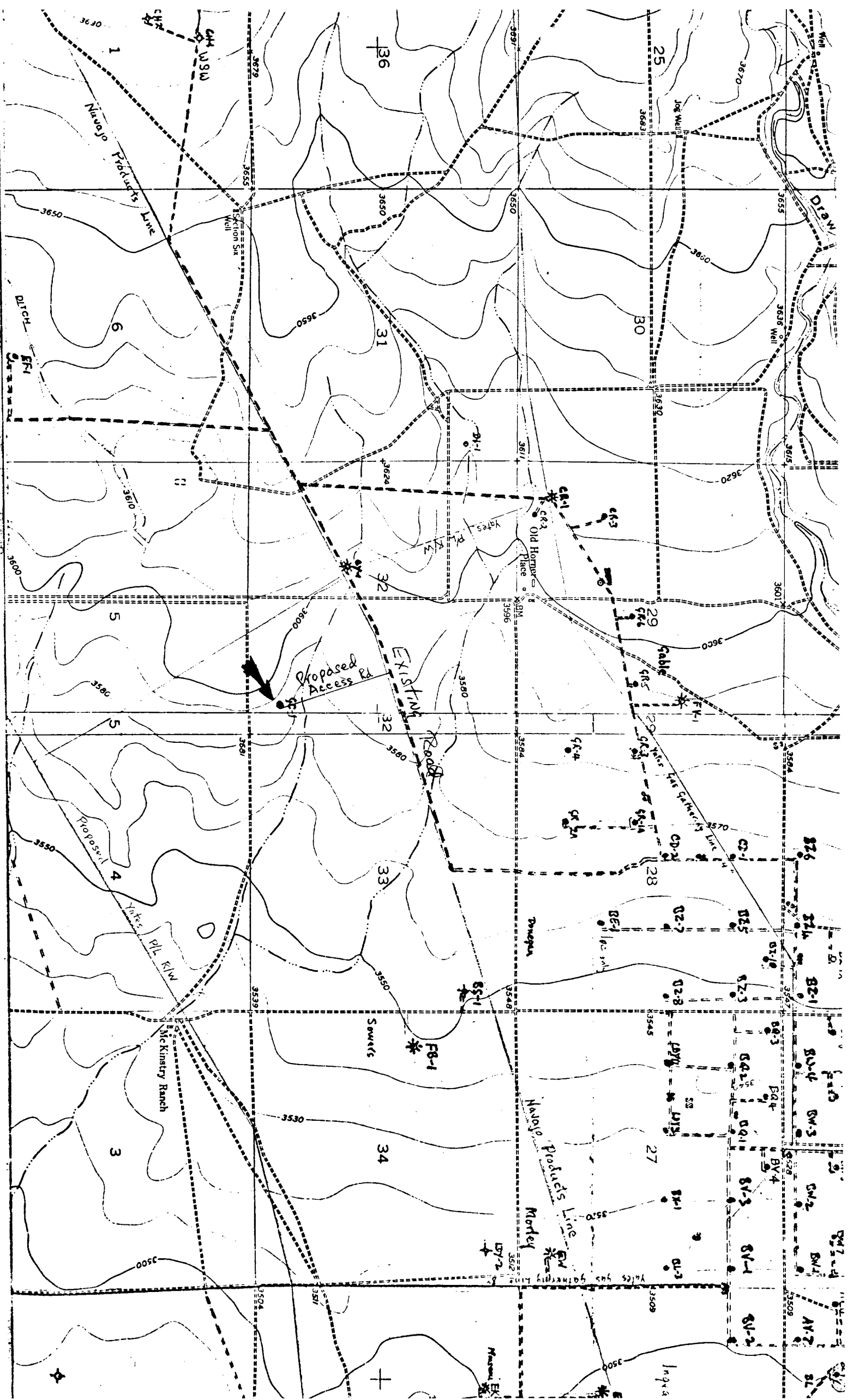
Certificate No. 542



Yates Petroleum Corporation
Federal "GC" Com #1
660' FSL & 660' FEL o. Section 32-17S-25E, Unit P, Eddy Co., NM

Development plan to accompany "Applications to Drill, Federal Lease".
12-Point Plan.

1. EXISTING ROADS: See Plat (Exhibit A) Caliched lease road - maintained as needed
2. PLANNED ACCESS ROADS: See Plat (Exhibit A) Bladed and caliched roadway for minimum disturbance of surface.
3. LOCATION OF WELLS: See Plat (Exhibit A) Development wells.
4. LATERAL ROADS TO LOCATION: See Plat (Exhibit A) None at this time.
5. LOCATION OF TANK BATTERY & FLOWLINES: See Plat (Exhibit C) Southwest corner of pad, towards proposed pipeline right-of-way.
6. LOCATION & TYPES OF WATER SUPPLY: See Plat (Exhibit A) Source water well in Section 1-18S-24E
7. METHODS FOR HANDLING WASTE DISPOSAL: See Sketch (Exhibit C) Mud in lined earthen pits, trash & engine oil in burn pit, pits fenced until dry & leveled.
8. LOCATION OF CAMPS: Not Applicable.
9. LOCATION OF AIRSTRIPS: Not Applicable.
10. LOCATION LAYOUT (rig, tanks, pits, racks, etc): See Sketch (Exhibit C)
11. PLANS FOR RESTORATION OF SURFACE: Pits will be leveled when dry, location cleaned up and restored to as near original as possible or to satisfaction of rancher.
12. OTHER ENVIRONMENT INFORMATION: Rolling prairie with some grass, greasewood, tumble weed, yellow tops & cactus. Rocky surface allows minimum caliche requirement.
13. Company representative will be Mr. Eddie Mahfood, P.E., c/o Yates Petroleum Corporation, 207 South Fourth Street, Artesia, NM, 88210, 746-3558.



YPC - Federal "GC" No. 1 Com.
 6601S 6601E, Sec 32-17S-25E, Eddy Co.

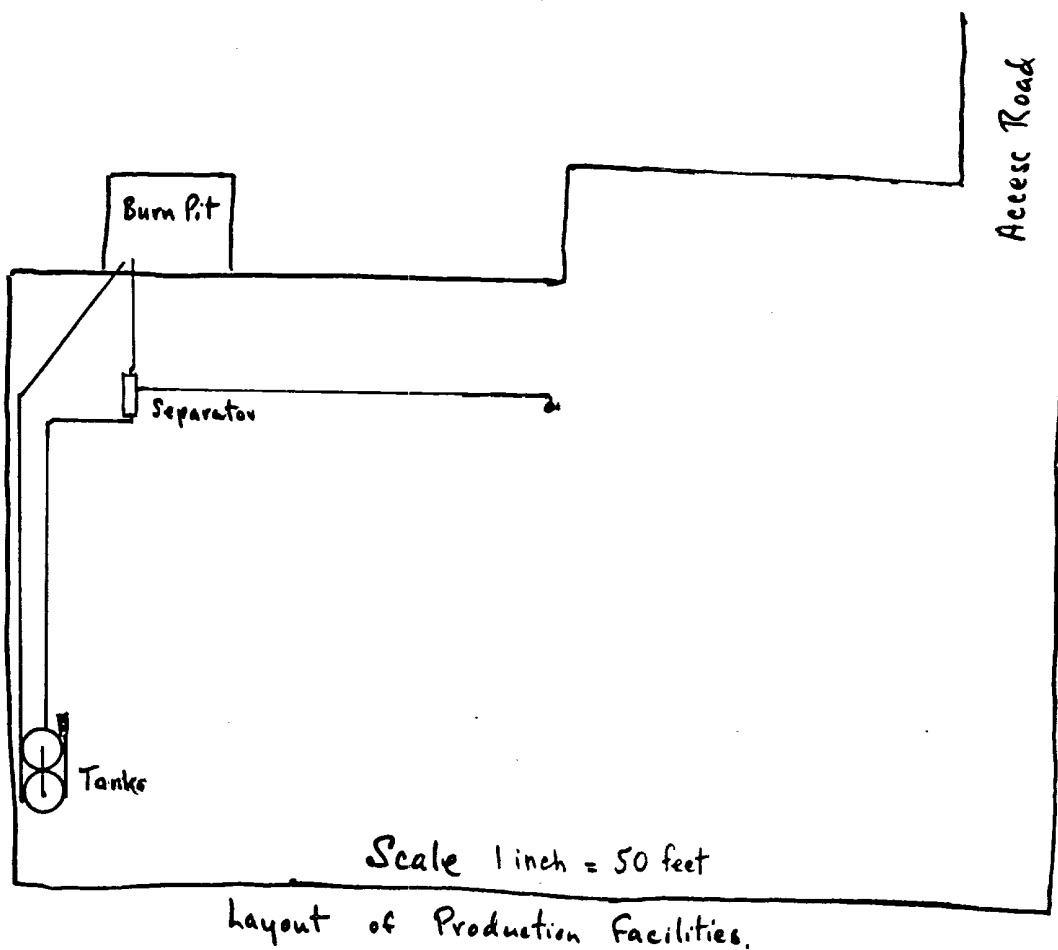
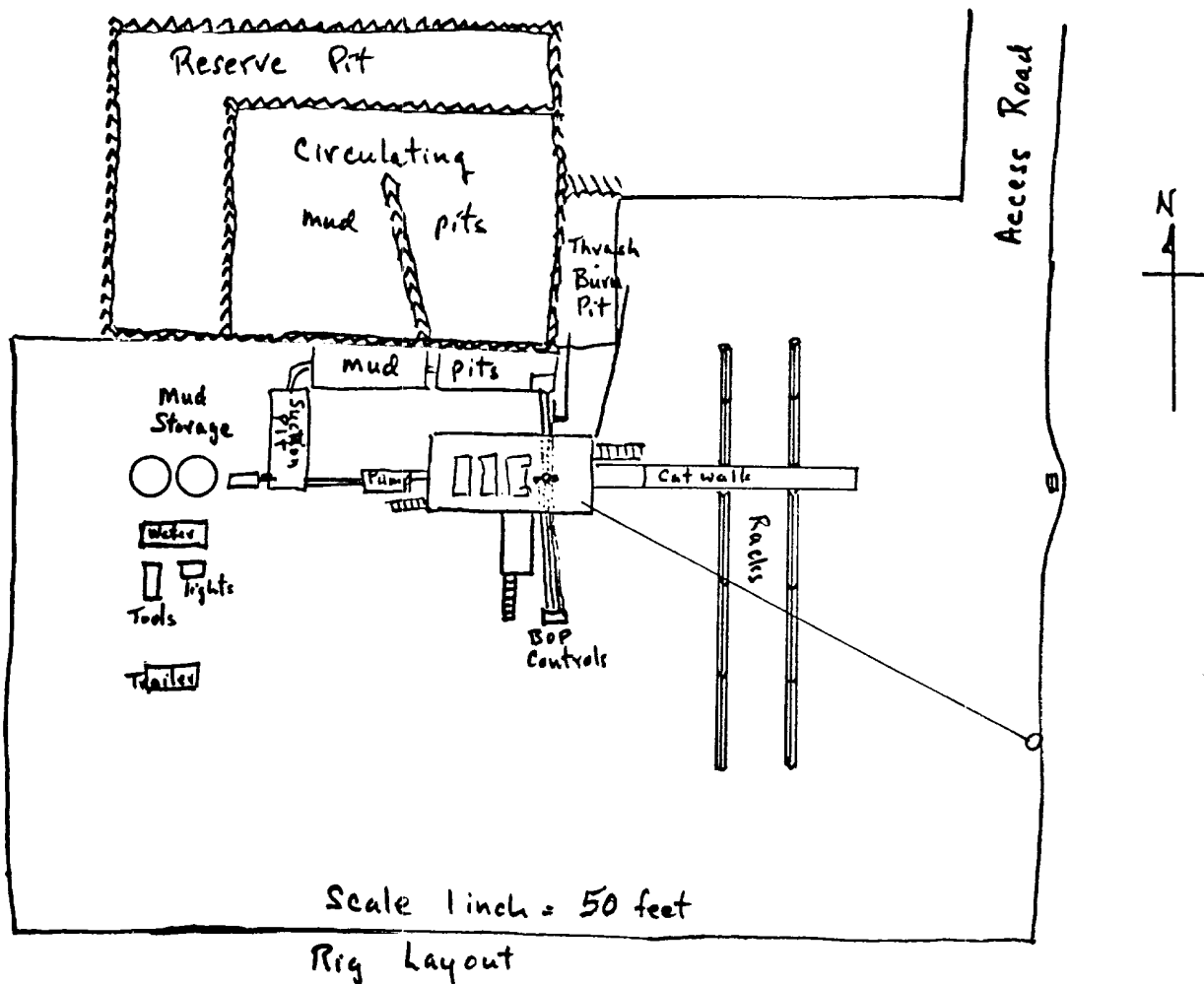
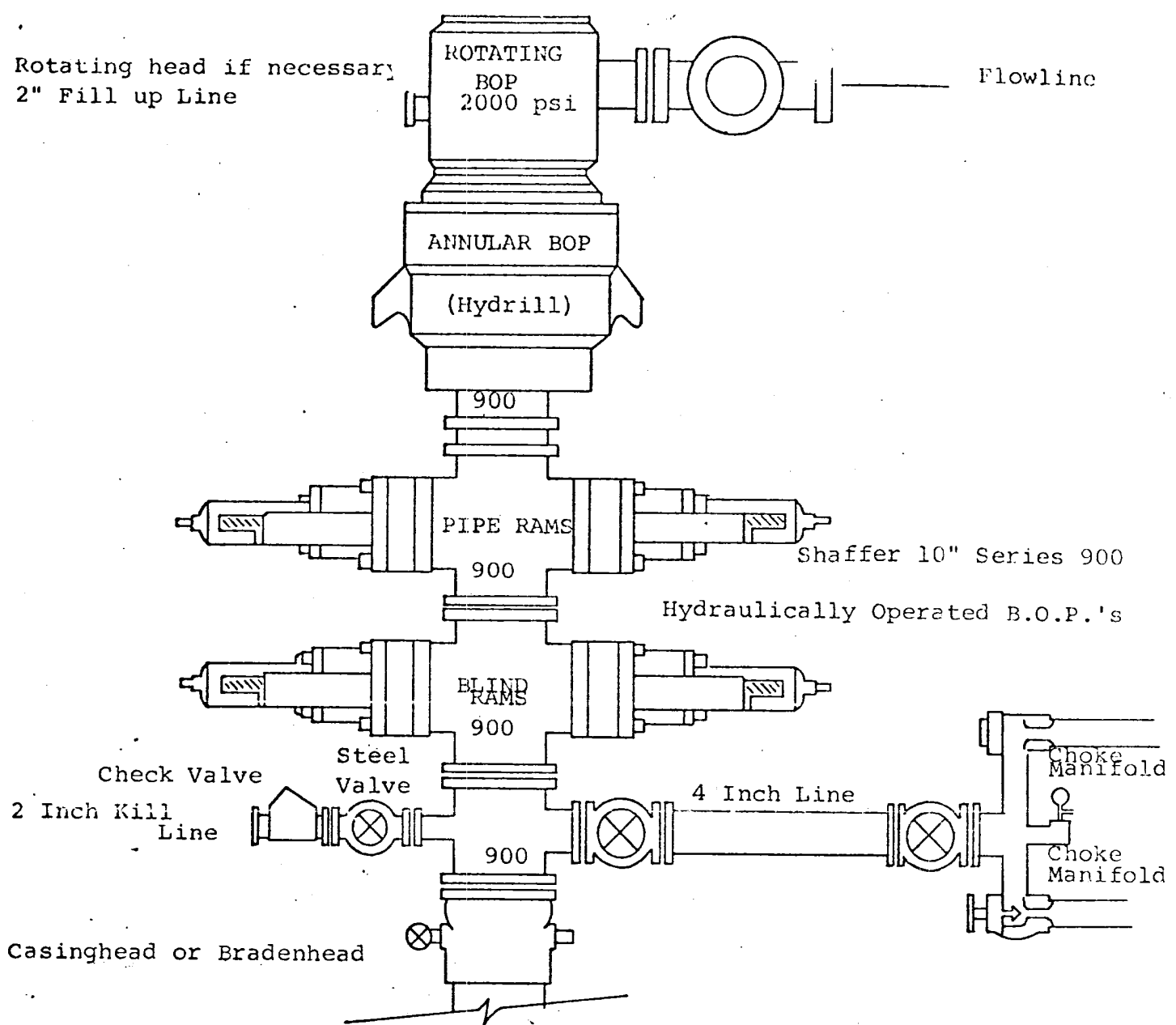


Exhibit "C"

Rotating head if necessary
2" Fill up Line



THE FOLLOWING CONSTITUTE MINIMUM BLOWOUT PREVENTER REQUIREMENTS

1. All preventers to be hydraulically operated with secondary manual controls installed prior to drilling out from under casing.
2. Choke outlet to be a minimum of 4" diameter.
3. Kill line to be of all steel construction of 2" minimum diameter.
4. All connections from operating manifolds to preventers to be all steel hole or tube a minimum of one inch in diameter.
5. The available closing pressure shall be at least 15% in excess of that required with sufficient volume to operate the B.O.P.'s.
6. All connections to and from preventer to have a pressure rating equivalent to that of the B.O.P.'s.
7. Inside blowout preventer to be available on rig floor.
8. Operating controls located a safe distance from the rig floor.
9. Hole must be kept filled on trips below intermediate casing. Operator not responsible for blowouts resulting from not keeping hole full.
10. D. P. float must be installed and used below zone of first gas intrusion.