

N. M. O. C. C. COPY
UNITED STATES
DEPARTMENT OF THE INTERIOR
GEOLOGICAL SURVEY

30-015-21856

APPLICATION FOR PERMIT TO DRILL, DEEPEN, OR PLUG BACK

1a. TYPE OF WORK

DRILL ☒DEEPEN ☐PLUG BACK ☐

b. TYPE OF WELL

OIL
WELL ☒GAS
WELL ☐

OTHER

SINGLE
ZONE ☐MULTIPLE
ZONE ☐

2. NAME OF OPERATOR

Yates Petroleum Corporation

3. ADDRESS OF OPERATOR

207 South 4th Street - Artesia, NM 88210

4. LOCATION OF WELL (Report location clearly and in accordance with any State requirements.)*

At surface

330' FNL & 2310' FEL of Section 28

At proposed prod. zone

14. DISTANCE IN MILES AND DIRECTION FROM NEAREST TOWN OR POST OFFICE*

Approx. 6 miles SW of Artesia, NM

15. DISTANCE FROM PROPOSED*

LOCATION TO NEAREST

PROPERTY OR LEASE LINE, FT.

(Also to nearest drlg. unit line, if any)

18. DISTANCE FROM PROPOSED LOCATION*

TO NEAREST WELL, DRILLING, COMPLETED,
OR APPLIED FOR, ON THIS LEASE, FT.

16. NO. OF ACRES IN LEASE

19. PROPOSED DEPTH

Approx. 1500'

17. NO. OF ACRES ASSIGNED
TO THIS WELL

20. ROTARY OR CABLE TOOLS

Rotary

21. ELEVATION (Show whether DF, RT, GR, etc.)

3563' GR

22. APPROX. DATE WORK WILL START*

As soon as approved

23.

PROPOSED CASING AND CEMENTING PROGRAM

SIZE OF HOLE	SIZE OF CASING	WEIGHT PER FOOT	SETTING DEPTH	QUANTITY OF CEMENT
15"	10-3/4"	32#	Approx 250'	Circulate
9 1/2"	7"	20#	" 1075'	Circulate
6 1/4"	4 1/2 & 5 1/2"	10.5 & 15.5#	" 1500'	125 sacks - circulate

Propose to drill a San Andres test well. Will set approx 250' of surface casing to shut off gravel and caving, and intermediate casing will be set 100' below the Artesian water zone. A tapered oil string will be run, all casing cemented to surface. Well will be perforated and stimulated as needed for production.

Mud Program: F. W. Gel, surface to 1075'; Fresh water to TD.

BOP Program: A space-saver BOP will be installed on 7" casing and tested.

IN ABOVE SPACE DESCRIBE PROPOSED PROGRAM: If proposal is to deepen or plug back, give data on present productive zone and proposed new productive zone. If proposal is to drill or deepen directionally, give pertinent data on subsurface locations and measured and true vertical depths. Give blowout preventer program, if any.

24.

SIGNED

Christine Lombard

TITLE

Geol. Secty

DATE

5-26-76

(This space for Federal or State office use)

APPROVED

APPROVED BY
JUN 23 1976
K. L. BEEKMAN
ACTING DISTRICT ENGINEERTHIS APPROVAL IS EXTENDED IF OPERATIONS APPROVAL DATE
ARE NOT COMPLETED WITHIN 6 MONTHS.
EXPIRES SEP 24 1976
*See Instructions On Reverse SideDECLARED WATER BASIN
1074'

DATE

NOTIFY USGS IN SUFFICIENT TIME TO
WITNESS CEMENTING THE

**NEW MEXICO OIL CONSERVATION COMMISSION
WELL LOCATION AND ACREAGE DEDICATION PLAT**

Form C-102
Supersedes C-128
Effective 1-1-65

All distances must be from the outer boundaries of the Section.

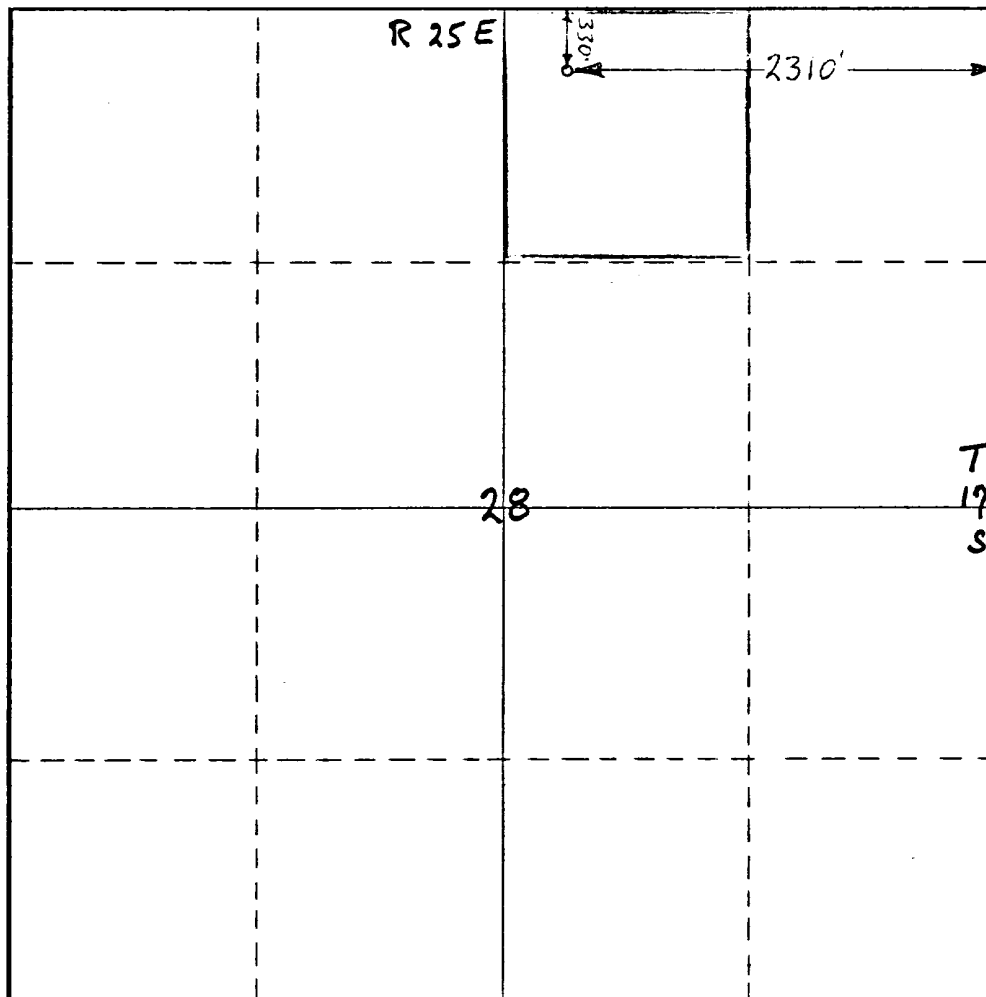
Operator Yates Petroleum Corp		Lease Federal BZ		Well No. 14
Unit Letter B	Section 28	Township 17-S	Range 25-E	County Eddy
Actual Footage Location of Well: <div style="display: flex; justify-content: space-between;"> 2310 feet from the East line and 330 feet from the North line </div>				
Ground Level Elev. 3563	Producing Formation San Andres	Pool Eagle Creek (S.A.)	Dedicated Acreage: 40 Acres	

1. Outline the acreage dedicated to the subject well by colored pencil or hatchure marks on the plat below.
2. If more than one lease is dedicated to the well, outline each and identify the ownership thereof (both as to working interest and royalty).
3. If more than one lease of different ownership is dedicated to the well, have the interests of all owners been consolidated by communitization, unitization, force-pooling, etc?

☐ Yes ☐ No If answer is "yes," type of consolidation _____

If answer is "no," list the owners and tract descriptions which have actually been consolidated. (Use reverse side of this form if necessary.) _____

No allowable will be assigned to the well until all interests have been consolidated (by communitization, unitization, forced-pooling, or otherwise) or until a non-standard unit, eliminating such interests, has been approved by the Commission.



CERTIFICATION

I hereby certify that the information contained herein is true and complete to the best of my knowledge and belief.

Eddie M. Mahfood

Name
Eddie M. Mahfood

Position
Engineer

Company
Yates Petroleum Corp.

Date
5-26-76

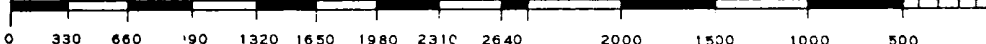
I hereby certify that the well location shown on this plat was plotted from field notes of actual surveys made by me or under my supervision, and that the same is true and correct to the best of my knowledge and belief.

Eddie M. Mahfood

Date Surveyed _____

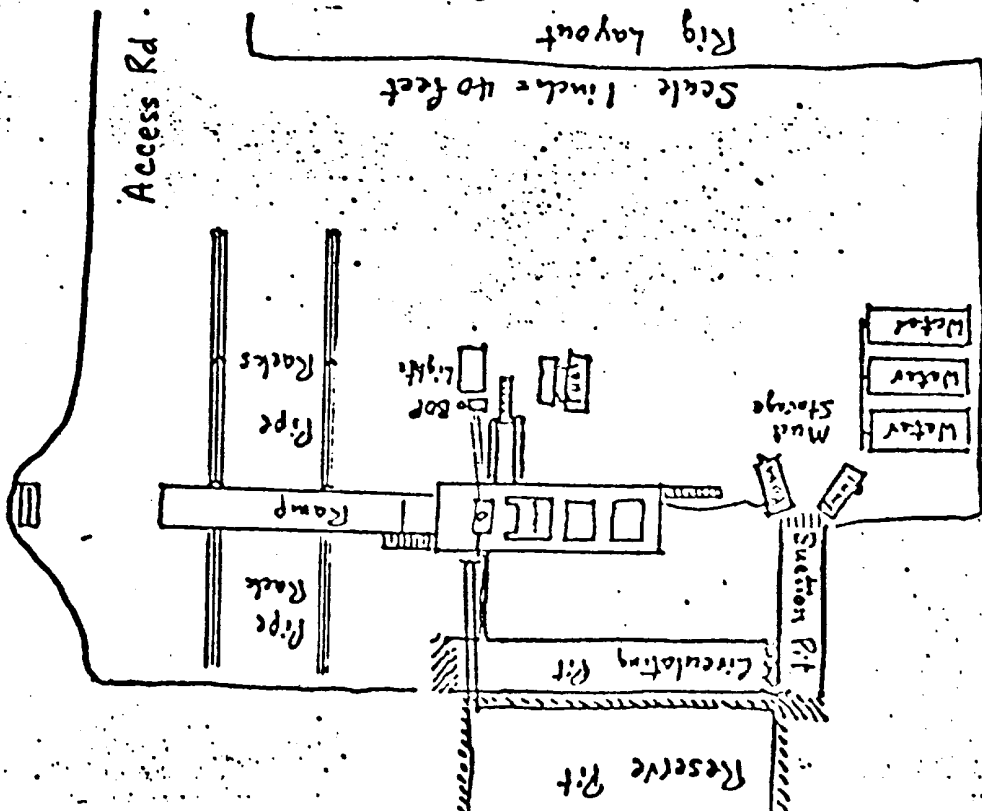
Registered Professional Engineer and/or Land Surveyor

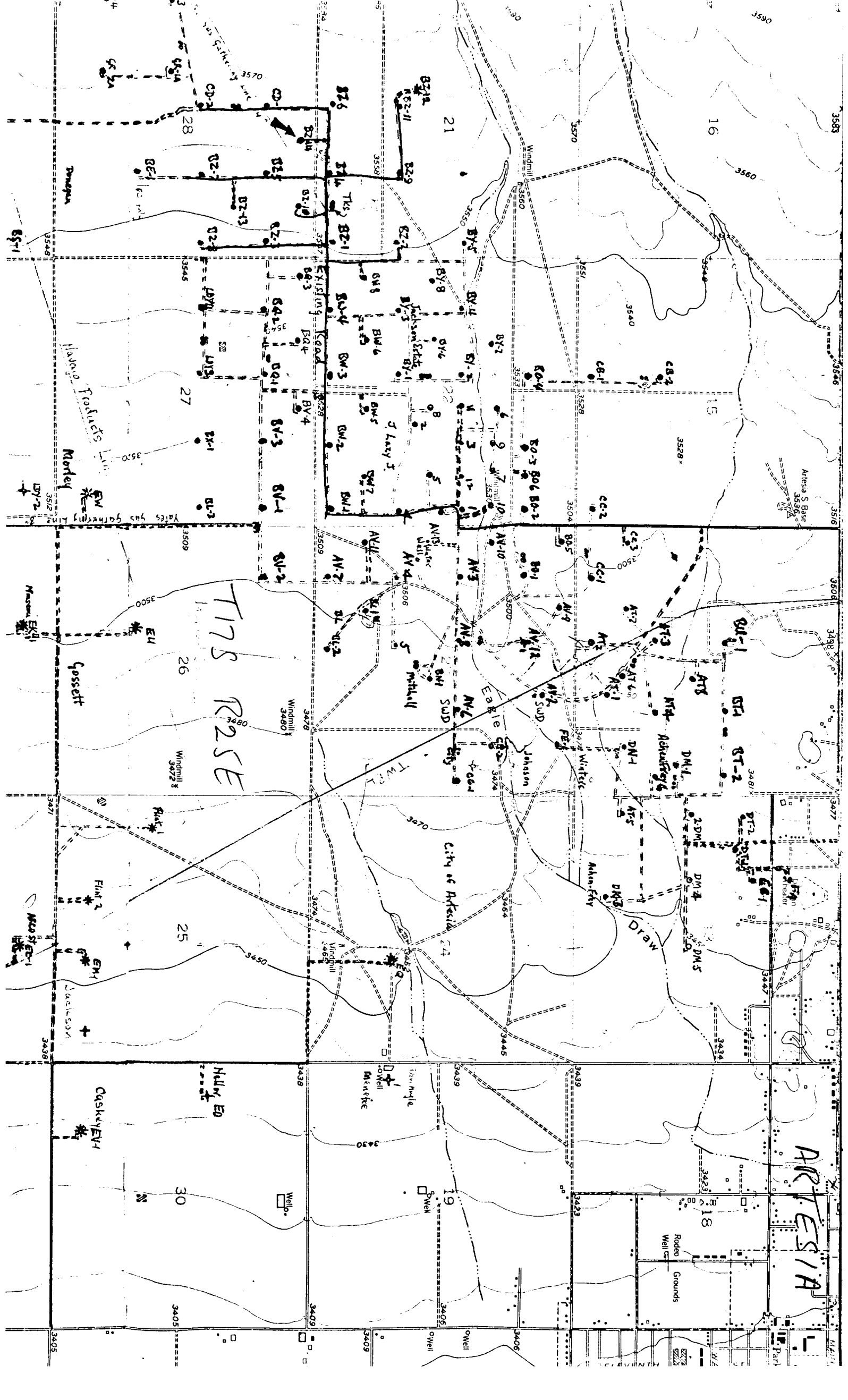
Certificate No. **4605**



Development plan to accompany "Applications to Drill, Federal Lease".
12-Point Plan.

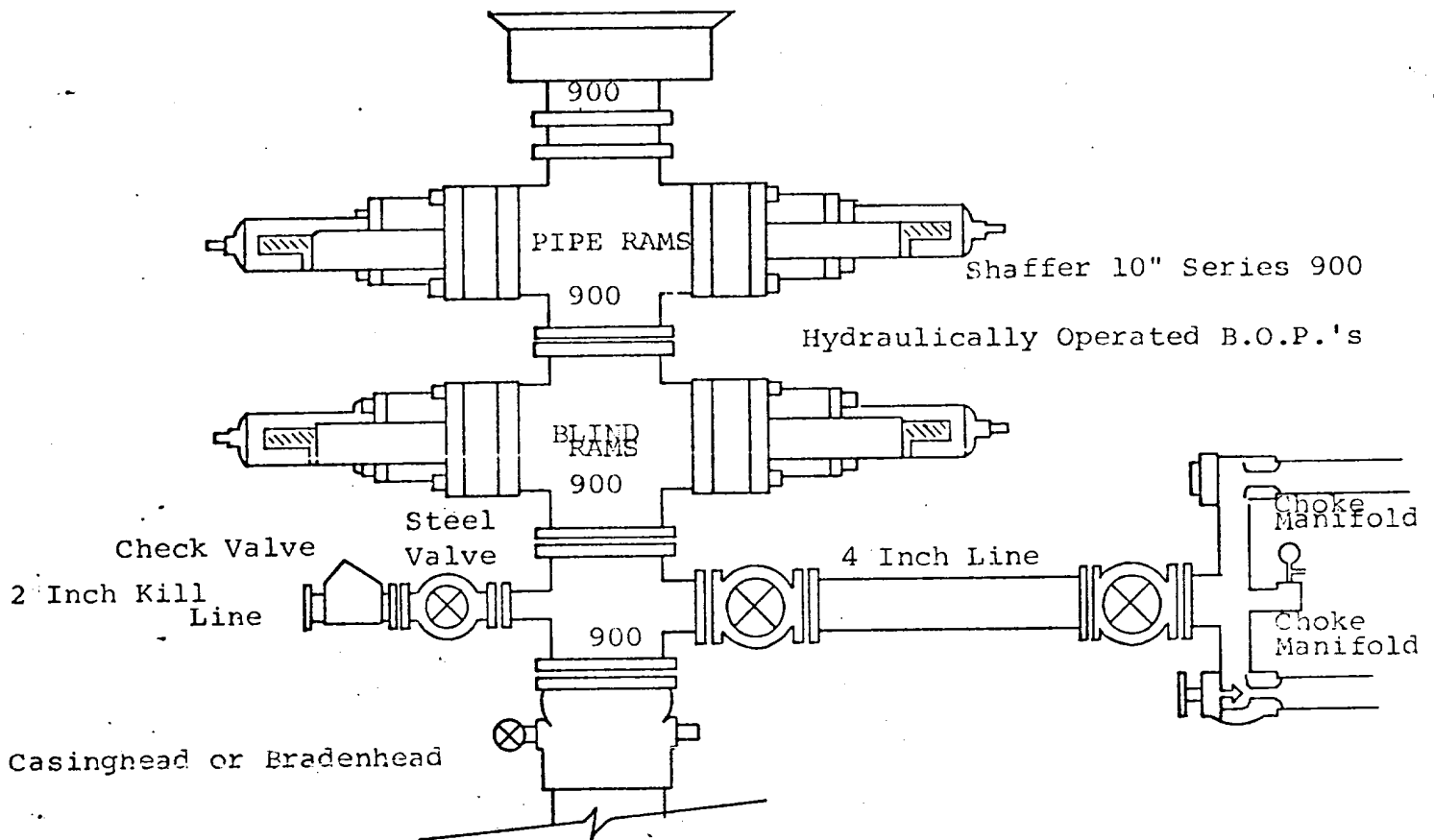
1. EXISTING ROADS: See Plat (Exhibit A) Existing caliched road in Eagle Creek (S.A.) Field within 600 feet of location
2. PLANNED ACCESS ROADS: See Plat (Exhibit A) Approx 600 feet of new road, south from existing road.
3. LOCATION OF WELLS: See Plat (Exhibit A) Development well, this site is diagonal offset to well in same 40 acre unit.
4. LATERAL ROADS TO LOCATION: See Plat (Exhibit A) No lateral roads in this pasture
5. LOCATION OF TANK BATTERY & FLOWLINES: See Plat (Exhibit A) Existing Tank Battery in Unit "P" Section 21.
6. LOCATION & TYPES OF WATER SUPPLY: See Plat (Exhibit A) May pipe water from existing water well in Section 1-18S-24E (Alternate source is Unit L Section 23-17S-25E).
7. METHODS FOR HANDLING WASTE DISPOSAL: See Sketch (Exhibit C) Mud in mud pits, trash and engine oil in burn pits.
8. LOCATION OF CAMPS: Not Applicable.
9. LOCATION OF AIRSTRIPS: Not Applicable.
10. LOCATION LAYOUT (rig, tanks, pits, racks, etc): See Sketch (Exhibit C)
11. PLANS FOR RESTORATION OF SURFACE: Pits will be fenced until dry, then leveled. If non-commercial will clean and restore location to near original and to the satisfaction of the surface owner.
12. OTHER ENVIRONMENT INFORMATION: Gently rolling terrain w/prairie grass & tumbleweed, grazing rights. Development plan satisfactory to rancher, W. E. McIlhenny, Box 38, Rt. 1, Artesia, NM PH 505-746-3034
13. - Company Representatives - Eddie Mahfood or Leon Bergstrom - 505-746-3558.





T178 R25E

ARTESIA



THE FOLLOWING CONSTITUTE MINIMUM BLOWOUT PREVENTER REQUIREMENTS

1. All preventers to be hydraulically operated with secondary manual controls installed prior to drilling out from under casing.
2. Choke outlet to be a minimum of 4" diameter.
3. Kill line to be of all steel construction of 2" minimum diameter.
4. All connections from operating manifolds to preventers to be all steel hole or tube a minimum of one inch in diameter.
5. The available closing pressure shall be at least 15% in excess of that required with sufficient volume to operate the B.O.P.'s.
6. All connections to and from preventer to have a pressure rating equivalent to that of the B.O.P.'s.
7. Inside blowout preventer to be available on rig floor.
8. Operating controls located a safe distance from the rig floor.
9. Hole must be kept filled on trips below intermediate casing. Operator not responsible for blowouts resulting from not keeping hole full.
10. D. P. float must be installed and used below zone of first gas intrusion.