

NO. OF COPIES RECEIVED	5
DISTRIBUTION	
SANTA FE	1
FILE	1 ✓
U.S.G.S.	2
LAND OFFICE	
OPERATOR	1

NEW MEXICO OIL CONSERVATION COMMISSION

AUG 30 1976

O. C. C.
ARTESIA, OFFICE

30-015-21899

Form C-101
Revised 1-1-65

5A. Indicate Type of Lease	
STATE <input type="checkbox"/>	FEE <input checked="" type="checkbox"/>
5. State Oil & Gas Lease No.	
7. Unit Agreement Name	
8. Farm or Lease Name	
McCaw "BT"	
9. Well No.	
5	
10. Field and Pool, or Wildcat	
Eagle Creek (S.A.)	
12. County	
Eddy	
19. Proposed Depth	19A. Formation
Approx. 1500'	San Andres
20. Rotary or C.T.	
Rotary	
21. Elevations (Show whether DF, RT, etc.)	21A. Kind & Status Plug. Bond
3495' GR	Blanket
21B. Drilling Contractor	22. Approx. Date Work will start
Byrd Drilling Co.	As soon as approved

APPLICATION FOR PERMIT TO DRILL, DEEPEN, OR PLUG BACK

1a. Type of Work	
b. Type of Well DRILL <input checked="" type="checkbox"/> DEEPEN <input type="checkbox"/> PLUG BACK <input type="checkbox"/>	
OIL WELL <input checked="" type="checkbox"/> GAS WELL <input type="checkbox"/> OTHER <input type="checkbox"/> SINGLE ZONE <input checked="" type="checkbox"/> MULTIPLE ZONE <input type="checkbox"/>	
2. Name of Operator	
Yates Petroleum Corporation	
3. Address of Operator	
207 South Fourth Street, Artesia, NM 88210	
4. Location of Well	
UNIT LETTER A LOCATED 380 FEET FROM THE North LINE	
AND 940 FEET FROM THE East LINE OF SEC. 14 TWP. 17S RGE. 25E NMPM	
21. Elevations (Show whether DF, RT, etc.)	
3495' GR	
21A. Kind & Status Plug. Bond	
Blanket	
21B. Drilling Contractor	
Byrd Drilling Co.	
22. Approx. Date Work will start	
As soon as approved	

PROPOSED CASING AND CEMENT PROGRAM

SIZE OF HOLE	SIZE OF CASING	WEIGHT PER FOOT	SETTING DEPTH	SACKS OF CEMENT	EST. TOP
15"	10-3/4"	32#	Approx. 300'	Circulate	
9-7/8"	7"	20-23#	Approx. 1150'	Circulate	
6 1/2"	4 1/2" & 5 1/2"	9.5-15.5#	Approx. 1500'	125 sacks	

We propose to drill a San Andres test with approx. 300' of 10-3/4" casing to shut off surface gravel and cavings and 7" casing will be set 100' below the Artesian zone with cement circulated. A tapered production string will be run to total depth and cemented, perforated and Sand Frac'd for production.

Mud Program: Fresh water gel and LCM to 1150' (or dry drill), water from casing point to total depth.

BOP Program: BOP's will be installed on 7" casing and tested daily.

APPROVAL VALID
FOR 90 DAYS UNLESS
DRILLING COMMENCED,

EXPIRES 11-30-76

IN ABOVE SPACE DESCRIBE PROPOSED PROGRAM: IF PROPOSAL IS TO DEEPEN OR PLUG BACK, GIVE DATA ON PRESENT PRODUCTIVE ZONE AND PROPOSED NEW PRODUCTIVE ZONE. GIVE BLOWOUT PREVENTER PROGRAM, IF ANY.

I hereby certify that the information above is true and complete to the best of my knowledge and belief.

Signed Eddie M. MacWhorter Title Engineer Date 8-27-76

(This space for State Use)

APPROVED BY W. A. Gressett TITLE Superintendent DATE AUG 31 1976

CONDITIONS OF APPROVAL, IF ANY:

surface behind 10 3/4" + 7" casing

Notify N.M.O.C.C. in sufficient time to witness cementing the 7" casing

NEW MEXICO OIL CONSERVATION COMMISSION
WELL LOCATION AND ACREAGE DEDICATION PLAT

Form C-102
Supersedes C-128
Effective 1-1-65

All distances must be from the outer boundaries of the Section.

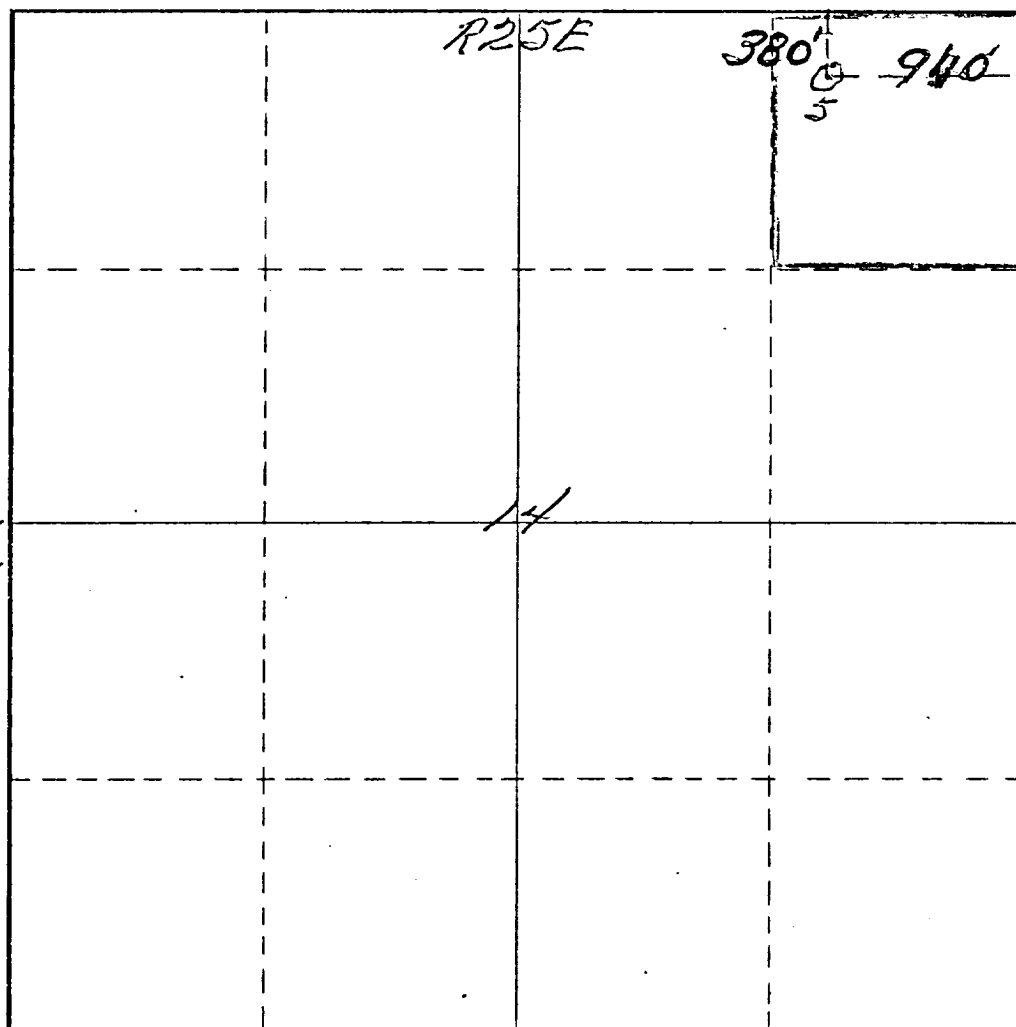
Operator <i>Yates Petroleum Corp.</i>		Lease <i>McCaw "BT"</i>		Well No. <i>5</i>	
Unit Letter <i>A</i>	Section <i>14</i>	Township <i>17 South</i>	Range <i>55 East</i>	County <i>Eddy</i>	
Actual Footage Location of Well: <i>380</i> feet from the <i>North</i> line and <i>940</i> feet from the <i>East</i> line					
Ground Level Elev. <i>3495</i>	Producing Formation <i>San Andres</i>		Pool <i>Eagle Creek (S.A.)</i>	Dedicated Acreage: <i>40</i> Acres	

1. Outline the acreage dedicated to the subject well by colored pencil or hachure marks on the plat below.
2. If more than one lease is dedicated to the well, outline each and identify the ownership thereof (both as to working interest and royalty).
3. If more than one lease of different ownership is dedicated to the well, have the interests of all owners been consolidated by communitization, unitization, force-pooling, etc?

☐ Yes ☐ No If answer is "yes," type of consolidation _____

If answer is "no," list the owners and tract descriptions which have actually been consolidated. (Use reverse side of this form if necessary.) _____

No allowable will be assigned to the well until all interests have been consolidated (by communitization, unitization, forced-pooling, or otherwise) or until a non-standard unit, eliminating such interests, has been approved by the Commission.



CERTIFICATION

I hereby certify that the information contained herein is true and complete to the best of my knowledge and belief.

Eddie M. Mahfood

Name

Eddie M. Mahfood

Position

Engineer

Company

Yates Petroleum Corp.

Date

August 26, 1976

I hereby certify that the well location shown on this plat was plotted from field notes, actual surveys made by me or under my supervision, and that the same is true and correct to the best of my knowledge and belief.

Date Surveyed

August 20th 1976

Registered Professional Engineer and/or Land Surveyor

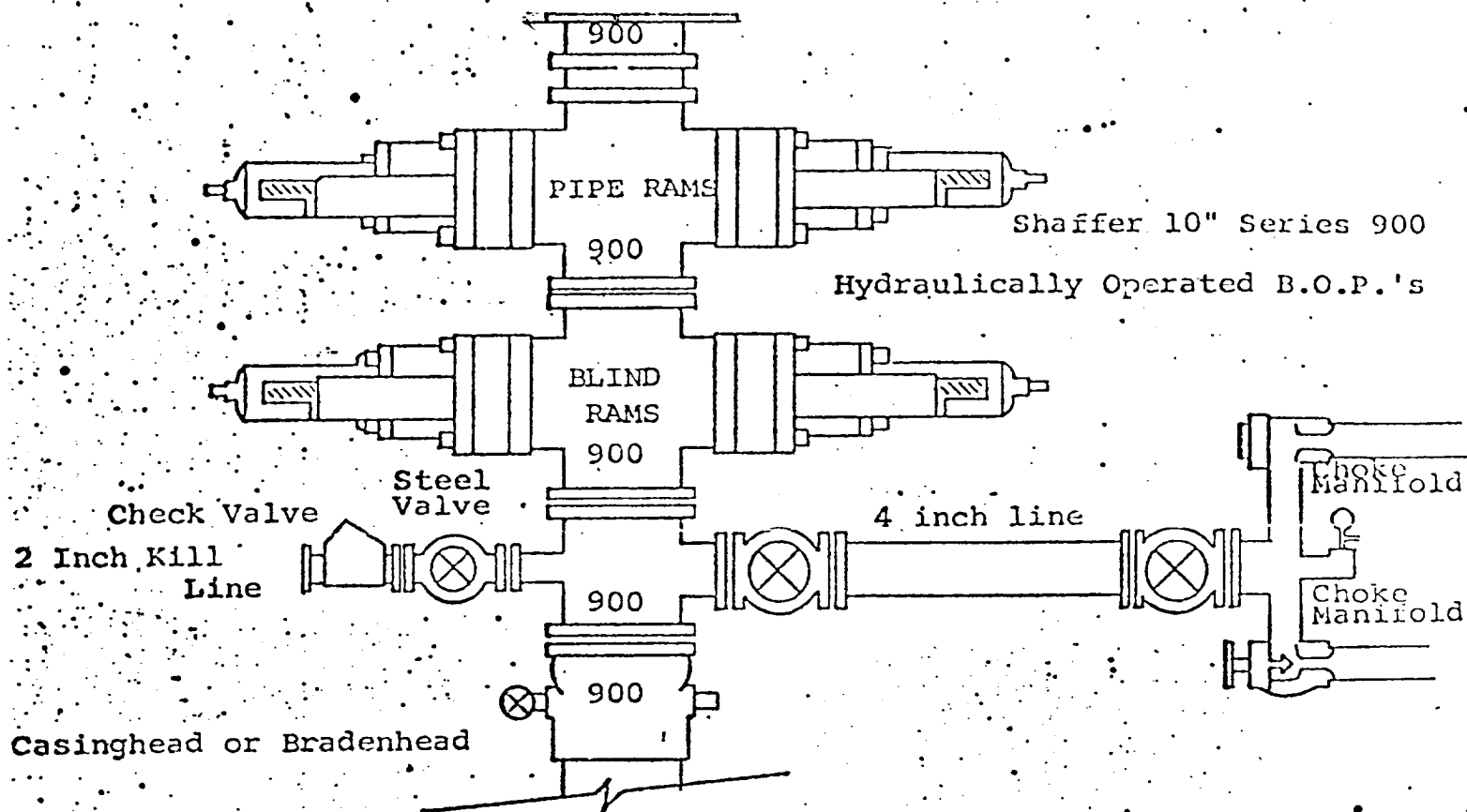
James H. Brown

Certificate No.

542

0 330 660 990 1320 1650 1980 2310 2640 2970 3300 3630 3960 4290 4620 4950 5280 5610 5940 6270 6600

DIAGRAMMA" C SKETCH OF 3000 PSI BOP ASSEMBLY



THE FOLLOWING CONSTITUTE MINIMUM BLOWOUT PREVENTER REQUIREMENTS

1. All preventers to be hydraulically operated with secondary manual controls installed prior to drilling out from under casing.
2. Choke outlet to be a minimum of 4" diameter.
3. Kill line to be of all steel construction of 2" minimum diameter.
4. All connections from operating manifolds to preventers to be all steel hole or tube a minimum of one inch in diameter.
5. The available closing pressure shall be at least 15% in excess of that required with sufficient volume to operate the B.O.P.'s.
6. All Connections to and from preventer to have a pressure rating equivalent to that of the B.O.P.'s.
7. Inside blowout preventer to be available on rig floor.
8. Operating controls located a safe distance from the rig floor.
9. Hole must be kept filled on trips below intermediate casing. Operator not responsible for blowouts resulting from not keeping hole full.
10. D.P. float must be installed and used below zone of first gas intrusion.