

**NEW MEXICO OIL CONSERVATION COMMISSION
WELL LOCATION AND ACREAGE DEDICATION PLAT**

Form C-102
Supersedes C-128
Effective 1-1-65

All distances must be from the outer boundaries of the Section.

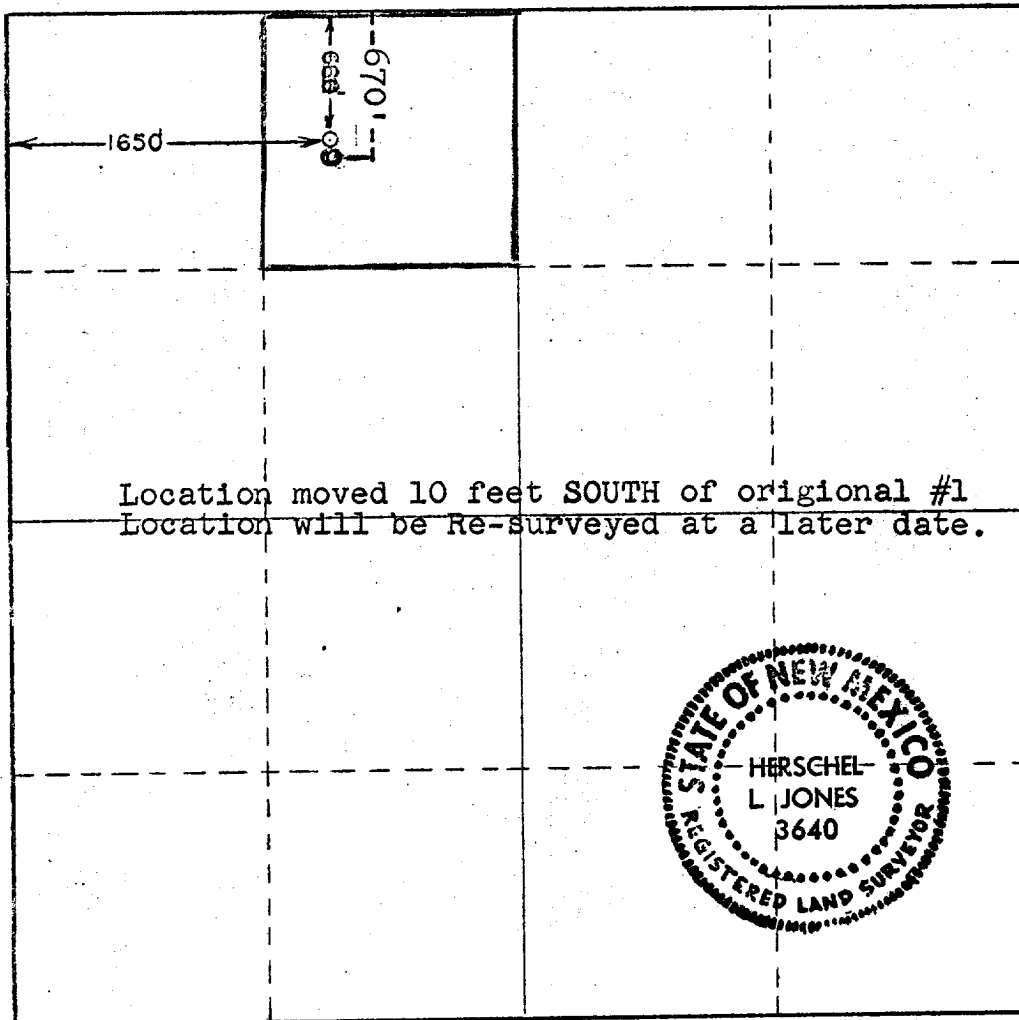
| | | | | | |
|--|--|--------------------------------|---------------------------------------|------------------------------|-------------------------|
| Operator CARL ENGWALL | | | Lease SKELLY STATE | | Well No. #1-Y |
| Unit Letter C | Section 11 | Township 17 South | Range 27 East | County Eddy County | |
| Actual Footage Location of Well: <div style="display: flex; justify-content: space-between;"> 1650 feet from the West line and 660 feet from the North line </div> | | | | | |
| Ground Level Elev. 3397 | Producing Formation San Andres | Pool W. Daugherty SA | Dedicated Acreage: 40 Acres | | |

1. Outline the acreage dedicated to the subject well by colored pencil or hachure marks on the plat below.
2. If more than one lease is dedicated to the well, outline each and identify the ownership thereof (both as to working interest and royalty).
3. If more than one lease of different ownership is dedicated to the well, have the interests of all owners been consolidated by communization, unitization, force-pooling, etc?

☐ Yes ☐ No If answer is "yes," type of consolidation _____

If answer is "no," list the owners and tract descriptions which have actually been consolidated. (Use reverse side of this form if necessary.) _____

No allowable will be assigned to the well until all interests have been consolidated (by communization, unitization, forced-pooling, or otherwise) or until a non-standard unit, eliminating such interests, has been approved by the Commission.



CERTIFICATION

I hereby certify that the information contained herein is true and complete to the best of my knowledge and belief.

Carl Engwall
 Name **Carl Engwall**
 Position **Operator**
 Company **Self**
 Date **9/4/76**

I hereby certify that the well location shown on this plat was plotted from field notes of actual surveys made by me or under my supervision, and that the same is true and correct to the best of my knowledge and belief.

Date Surveyed **9/1/76**
 Registered Professional Engineer and/or Land Surveyor
Herschel L. Jones
 Certificate No. **3640**

