

RECEIVED UNITED STATES
DEPARTMENT OF THE INTERIOR

SEP 29 1976 GEOLOGICAL SURVEY

APPLICATION FOR PERMIT TO DRILL, DEEPEN, OR PLUG BACK

1a. TYPE OF WORK ARTESIAN OFFICE		DEEPEN <input type="checkbox"/>		PLUG BACK <input type="checkbox"/>	
b. TYPE OF WELL OIL WELL <input checked="" type="checkbox"/> GAS WELL <input type="checkbox"/> OTHER <input type="checkbox"/>		SINGLE ZONE <input checked="" type="checkbox"/>		MULTIPLE ZONE <input type="checkbox"/>	
2. NAME OF OPERATOR Yates Petroleum Corporation					
3. ADDRESS OF OPERATOR 207 South Fourth Street, Artesia, NM 88210					
4. LOCATION OF WELL (Report location clearly and in accordance with any State requirements.*) At surface 1650' FNL & 1650' FWL of Section 28-17S-25E At proposed prod. zone					
14. DISTANCE IN MILES AND DIRECTION FROM NEAREST TOWN OR POST OFFICE* Approx. 6 miles West of Artesia, NM					
15. DISTANCE FROM PROPOSED* LOCATION TO NEAREST PROPERTY OR LEASE LINE, FT. (Also to nearest drlg. unit line, if any)		990'		16. NO. OF ACRES IN LEASE	
18. DISTANCE FROM PROPOSED LOCATION* TO NEAREST WELL, DRILLING, COMPLETED, OR APPLIED FOR, ON THIS LEASE, FT.		Approx. 1500'		17. NO. OF ACRES ASSIGNED TO THIS WELL 40	
21. ELEVATIONS (Show whether DF, RT, GR, etc.) 3570' GR				20. ROTARY OR CABLE TOOLS Rotary	
				22. APPROX. DATE WORK WILL START* Soon as approved	

23. PROPOSED CASING AND CEMENTING PROGRAM

SIZE OF HOLE	SIZE OF CASING	WEIGHT PER FOOT	SETTING DEPTH	QUANTITY OF CEMENT
15"	10-3/4"	32.75#	Approx. 200'	125 sacks-circulate
9 1/2"	7"	20 or 23#	Approx. 1080'	450 sacks-circulate
6 1/4"	4 1/2"-5 1/2" Taper	9.5-14#	TD	125 sacks-circulate

Propose to drill San Andres Test, approximately 200' of 10-3/4" casing will be set to shut off gravel & cavings. Intermediate casing will be set 100' below the Artesian Water. A tapered oil string will be run, all casing cemented to surface. Well will be perforated & stimulated as needed for production.

Mud Program: FW Gel & LCM to 1080', fresh water to TD.

BOP Program: BOP's will be installed on 7" casing & tested.

IN ABOVE SPACE DESCRIBE PROPOSED PROGRAM: If proposal is to deepen or plug back, give data on present productive zone and proposed new productive zone. If proposal is to drill or deepen directionally, give pertinent data on subsurface locations and measured and true vertical depths. Give blowout preventer program, if any.

24.

SIGNED

TITLE

Engineer

DATE

8-25-76

(This space for Federal or State office use)

PERMIT NO.

APPROVAL DATE

APPROVED BY

CONDITIONS OF APPROVAL, IF ANY:

TITLES OPERATIONS

ARE NOT TO BE EXCEEDED 3 MONTHS

THIS APPROVAL IS RESCINDED IF NOT USED WITHIN 3 MONTHS
DEC 27 1976

*See Instructions On Reverse Side

DECLARED WATER BASIN
10-3/4"
7"
CASINGS MUST BE CIRCULATED
NOT BY LOSS IN SUFFICIENT TIME TO
7" CASINGRECEIVED
AUG 25 1976
U.S. GEOLOGICAL SURVEY
ARTESIA, NEW MEXICO

NEW MEXICO OIL CONSERVATION COMMISSION
WELL LOCATION AND ACREAGE DEDICATION PLAT

Form C-102
Supersedes C-128
Effective 1-1-65

All distances must be from the outer boundaries of the Section.

RECEIVED
AUG 25 1976
U.S. GEOLOGICAL SURVEY
ARTESIA, NEW MEXICO

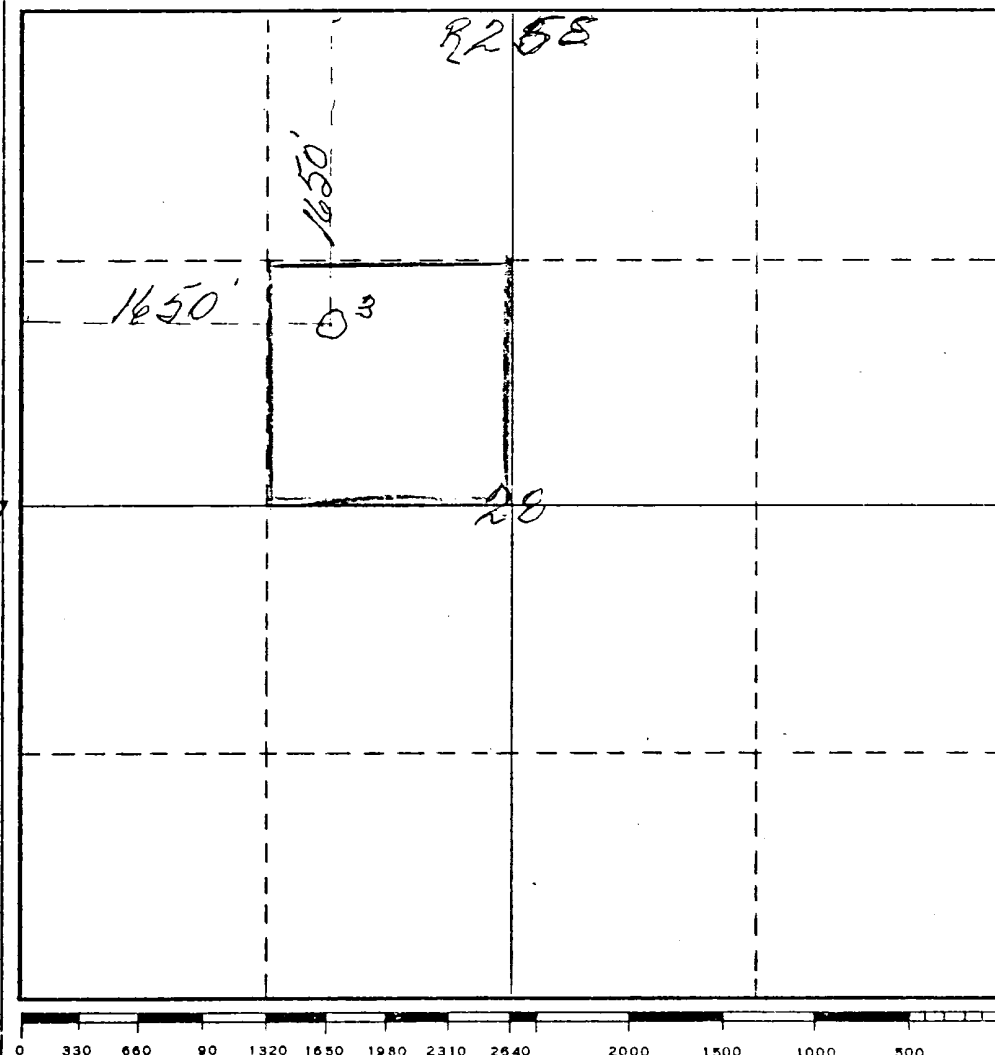
Operator <i>Yates Petroleum Corp</i>		Lease <i>"30" Federal</i>		Well No. <i>3</i>	
Unit Letter <i>F</i>	Section <i>28</i>	Township <i>17 South</i>	Range <i>25 East</i>	County <i>Eddy</i>	
Actual Postage Location of Well: <i>1650</i> feet from the <i>North</i> line and <i>1650'</i> feet from the <i>West</i> line					
Ground Level Elev. <i>2570'</i>	Producing Formation <i>San Andres</i>		Pool <i>Eagle Creek (S.A.)</i>	Dedicated Acreage: <i>40</i> Acres	

1. Outline the acreage dedicated to the subject well by colored pencil or hachure marks on the plat below.
2. If more than one lease is dedicated to the well, outline each and identify the ownership thereof (both as to working interest and royalty).
3. If more than one lease of different ownership is dedicated to the well, have the interests of all owners been consolidated by communitization, unitization, force-pooling, etc?

☐ Yes ☐ No If answer is "yes," type of consolidation _____

If answer is "no," list the owners and tract descriptions which have actually been consolidated. (Use reverse side of this form if necessary.) _____

No allowable will be assigned to the well until all interests have been consolidated (by communitization, unitization, forced-pooling, or otherwise) or until a non-standard unit, eliminating such interests, has been approved by the Commission.



CERTIFICATION

I hereby certify that the information contained herein is true and complete to the best of my knowledge and belief.

Eddie H. Lindquist
Name

Engineer
Position

Yates Petroleum Corp
Company

8-24-76
Date

I hereby certify that the well location shown on this plat was plotted from field notes of actual surveys made by me or under my supervision, and that the same is true and correct to the best of my knowledge and belief.

JAMES H. BROWN
Date Surveyed

August 14th 1976
Registered Professional Engineer
and/or Land Surveyor

James H. Brown
Certificate No. *542*

Surface Use Plan to accompany "Applications to Drill, Federal Lease".

1. EXISTING ROADS: See Plat (Exhibit A) Caliched road in Eagle Creek field off of U.S. 82 (4 miles west of U.S. 285), watered & maintained by Operator as needed.
2. PLANNED ACCESS ROADS: See Plat (Exhibit A) Approximately 600' new road with caliche, 16 feet wide, west from existing tank battery alongside existing road.
3. LOCATION OF EXISTING WELLS: See Plat (Exhibit A) This is a development well in the Eagle Creek (San Andres) Field.
4. LOCATION OF TANK BATTERIES, PRODUCTION FACILITIES, AND PRODUCTION, GATHERING AND SERVICE LINES: See Plat (Exhibit B) Tank battery in SE NW of Section 28-17S-25E. Flowlines from new well will be laid alongside access road to tank battery.
5. LOCATION AND TYPE OF WATER SUPPLY: See Plat (Exhibit A) Water supply well in NE NW Section 1-18S-25E, water piped to location.
6. SOURCE OF CONSTRUCTION MATERIAL: Existing caliche pit on Federal "BZ" (0219603) lease, located in NW/4 NE/4 Section 28-17S-25E.
7. METHODS FOR HANDLING WASTE DISPOSAL: Earthen pit for drilling mud; small reserve pit for jetting cuttings and burning mud sacks; trash barrels for garbage and waste; sump for portable commode.
8. ANCILLARY FACILITIES: None.
9. WELL SITE LAYOUT: (rig, tanks, pits, racks, etc.) See Sketch (Exhibit B) fairly level terrain.
10. PLANS FOR RESTORATION OF SURFACE: Pits will be fenced until dry then leveled; upon abandonment location will be cleaned and restored to as near original as feasible.
11. OTHER INFORMATION: Rolling terrain with prairie grass, greasewood, tumbleweed and cactus. Operating plans approved by rancher W.E. McIlhaney, Box 38, Artesia, NM, 88210.
12. LESSEE'S OR OPERATOR'S REPRESENTATIVE: Eddie Mahfood or Leon Bergstrom, 207 South Fourth Street, Artesia, NM. 746-3558.
13. CERTIFICATION:

I hereby certify that I, or persons under my direct supervision, have inspected the proposed drillsite and access route; that I am familiar with the conditions which presently exist; that the statements made in this plan are, to the best of my knowledge, true and correct; and, that the work associated with the operations proposed herein will be performed by Yates Petroleum Corp. and its contractors and subcontractors in conformity with this plan and the terms and conditions under which it is approved.

Date

August 24 1976

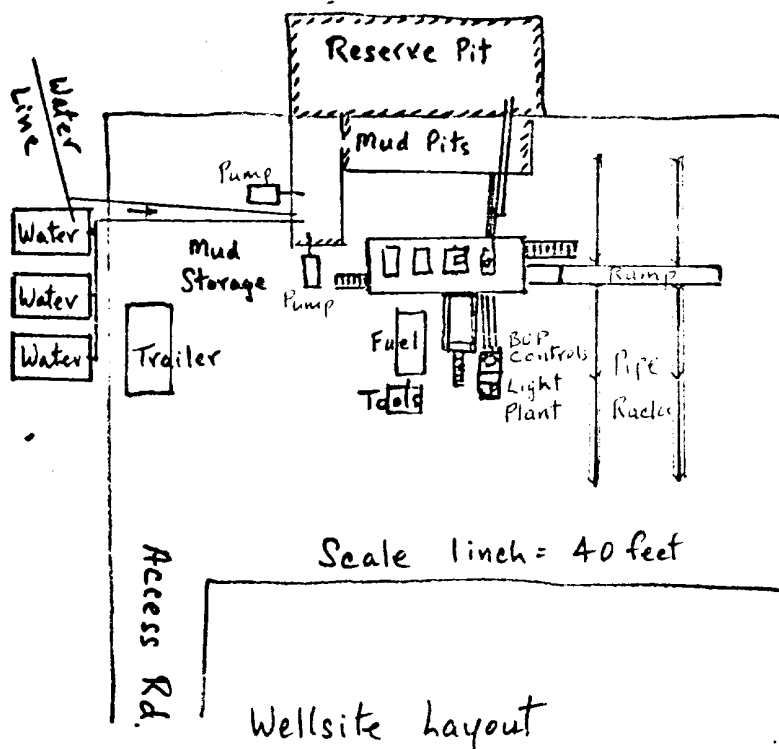
Name and title

Eddie L. Mahfood

RECEIVED

AUG 25 1976

**ECOLOGICAL SURVEY
1, NEW MEXICO**



RECEIVED
AUG 25 1976
U. S. GEOLOGICAL SURVEY
ARTESIA, NEW MEXICO

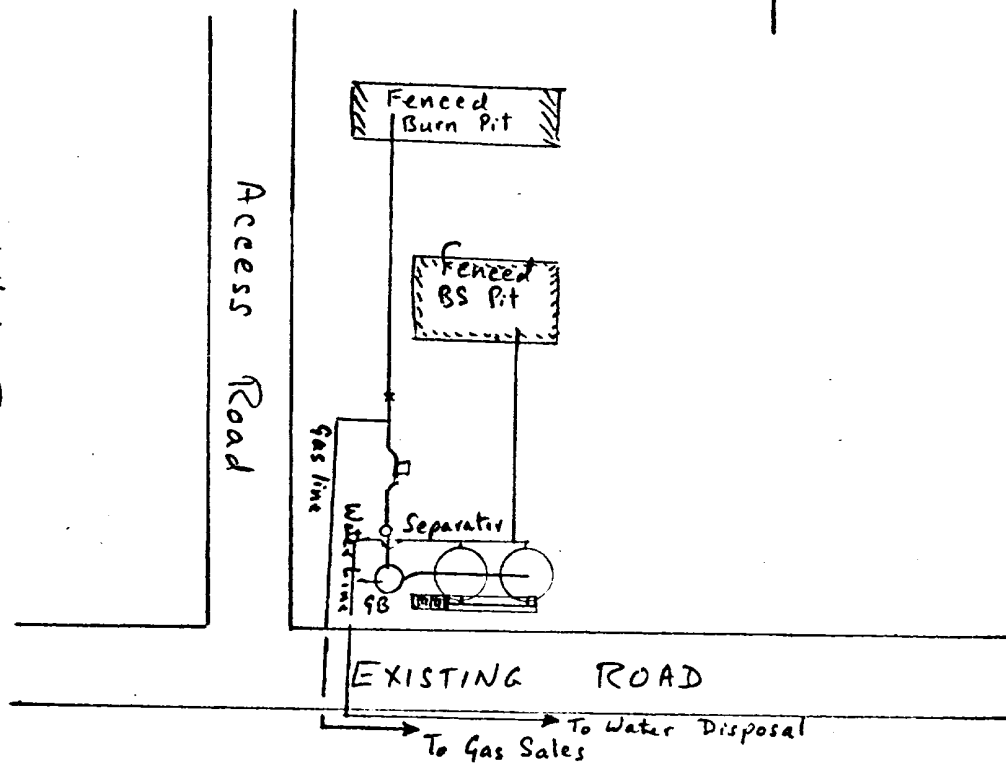
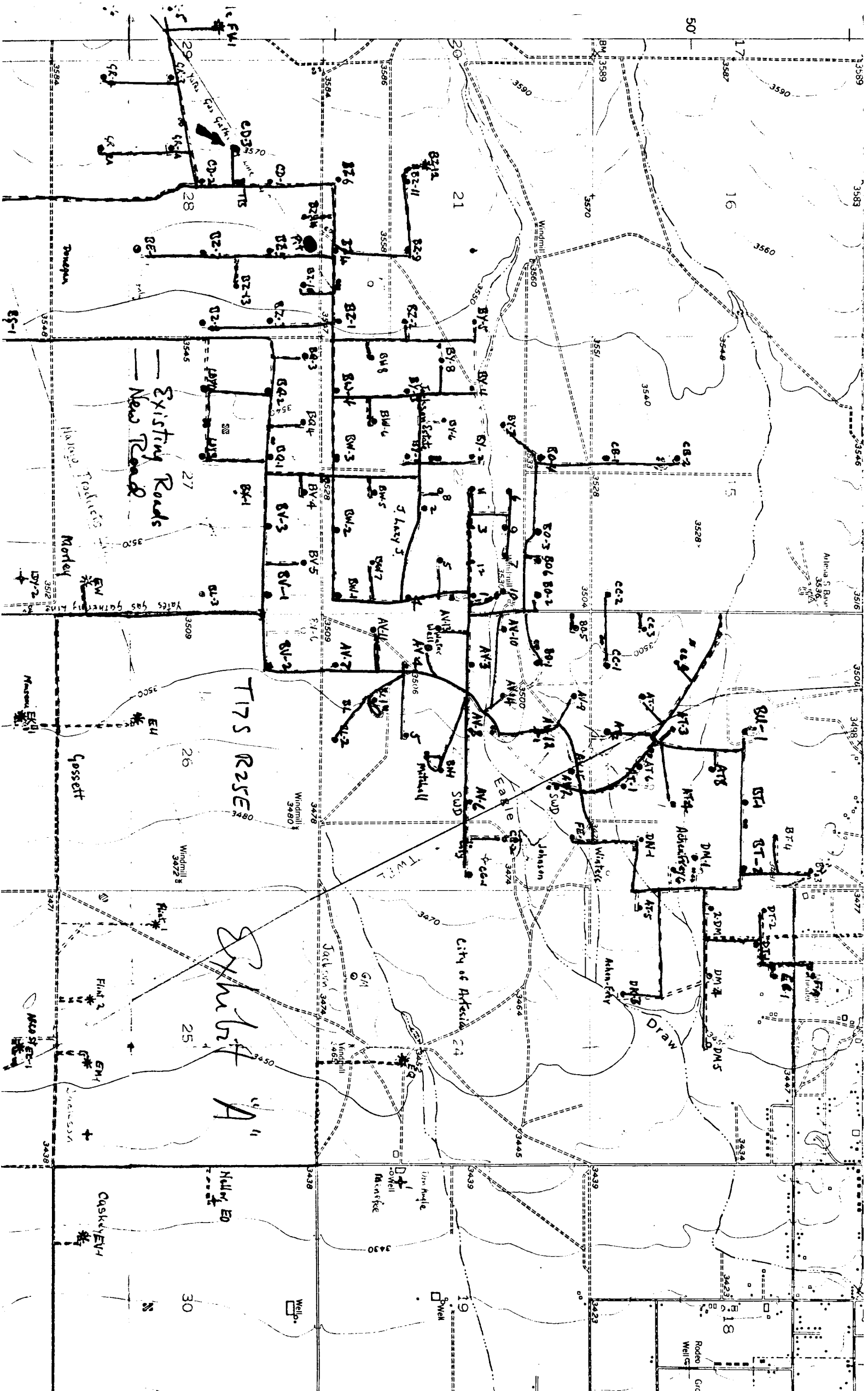
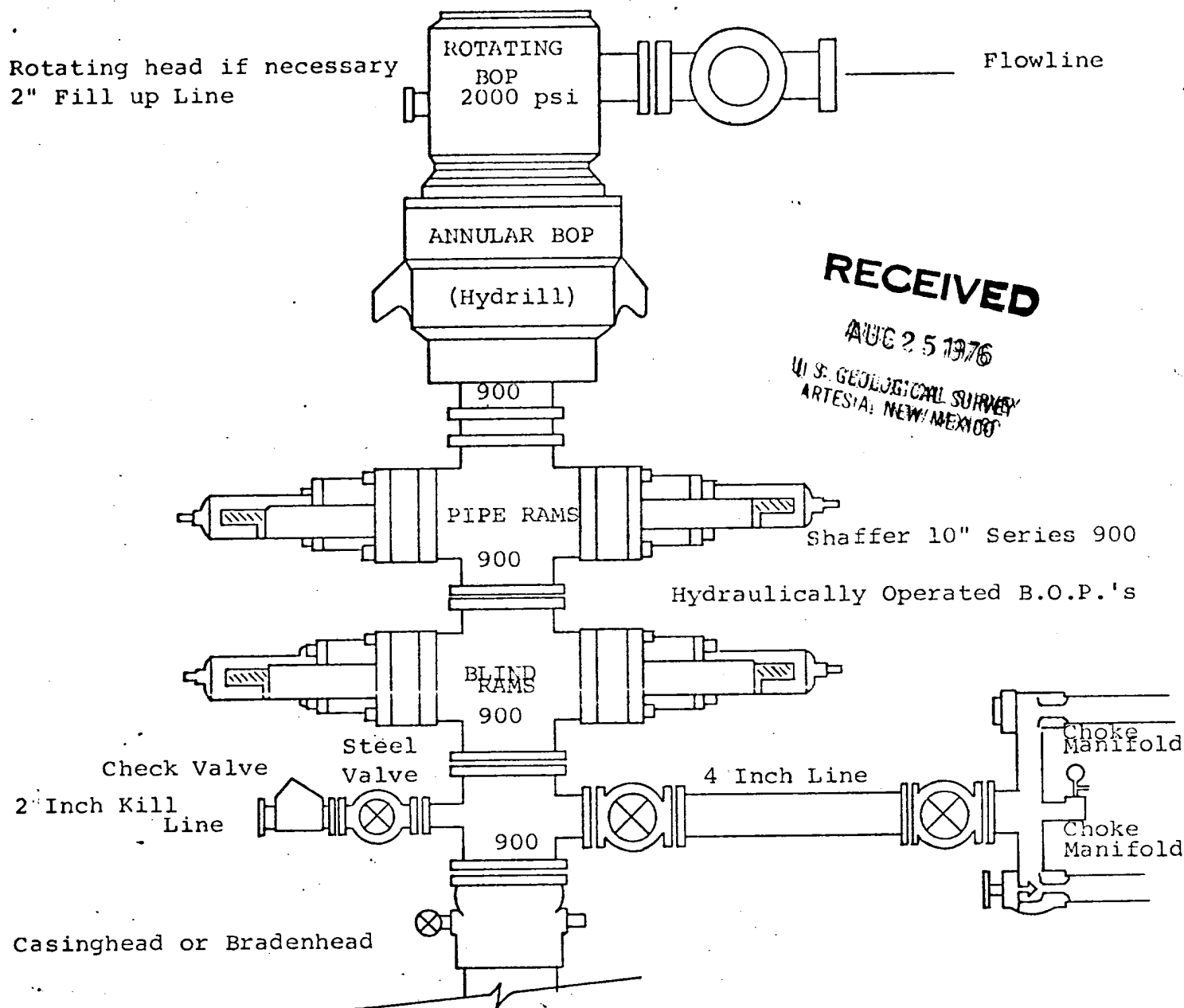


Exhibit B

19C - Federal CD #13
1650/N 1650/W 28-175-25C



RECEIVED
AUG 25 1976
U.S. GEOLOGICAL SURVEY
ARTESIA, NEW MEXICO



THE FOLLOWING CONSTITUTE MINIMUM BLOWOUT PREVENTER REQUIREMENTS

1. All preventers to be hydraulically operated with secondary manual controls installed prior to drilling out from under casing.
2. Choke outlet to be a minimum of 4" diameter.
3. Kill line to be of all steel construction of 2" minimum diameter.
4. All connections from operating manifolds to preventers to be all steel, hole or tube a minimum of one inch in diameter.
5. The available closing pressure shall be at least 15% in excess of that required with sufficient volume to operate the B.O.P.'s.
6. All connections to and from preventer to have a pressure rating equivalent to that of the B.O.P.'s.
7. Inside blowout preventer to be available on rig floor.
8. Operating controls located a safe distance from the rig floor.
9. Hole must be kept filled on trips below intermediate casing. Operator not responsible for blowouts resulting from not keeping hole full.
10. D. P. float must be installed and used below zone of first gas intrusion.