

NO. OF COPIES RECEIVED	6
DISTRIBUTION	
SANTA FE	1
FILE	2 ✓
U.S.G.S.	2
LAND OFFICE	1
OPERATOR	1

RECEIVED
NEW MEXICO OIL CONSERVATION COMMISSION

OCT 5 1976

O.C.C.
ARTESIA, OFFICE

30-015-21928
Form C-101
Revised 1-1-65

5A. Indicate Type of Lease	
STATE <input checked="" type="checkbox"/>	FEE <input type="checkbox"/>
5. State Oil & Gas Lease No.	
B-2071	

APPLICATION FOR PERMIT TO DRILL, DEEPEN, OR PLUG BACK

1a. Type of Work		7. Unit Agreement Name	
b. Type of Well OIL WELL <input checked="" type="checkbox"/> GAS WELL <input type="checkbox"/> OTHER <input type="checkbox"/>		8. Farm or Lease Name Gillespie State	
2. Name of Operator David C. Collier ✓		9. Well No. 4	
3. Address of Operator P. O. Box 798, Artesia, NM 88210		10. Field and Pool, or Wildcat E. Empire Yates 7R	
4. Location of Well UNIT LETTER B LOCATED 940 FEET FROM THE North LINE AND 2310 FEET FROM THE East LINE OF SEC. 27 TWP. 17S RGE. 28E NMPM		12. County Eddy	
19. Proposed Depth 785		19A. Formation 7-Rivers	20. Rotary or C.T. C.T.
21. Elevations (Show whether DF, RT, etc.) 3597	21A. Kind & Status Plug. Bond Statewide Plugging	21B. Drilling Contractor POW CO	22. Approx. Date Work will start Oct. 5, 1976

PROPOSED CASING AND CEMENT PROGRAM

SIZE OF HOLE	SIZE OF CASING	WEIGHT PER FOOT	SETTING DEPTH	SACKS OF CEMENT	EST. TOP
10"	8 5/8	24#	200		
8"	7	20#	500		
6 1/4	5 1/2	14#	765 Apprx	125 circ to	surface

Plan to spud October 5, 1976 with 10" bit and drill to approx 200 feet.
Run 200 feet 8 5/8 surface for water shut off.

Run 8 inch bit and drill to approx 500 feet.
Run 500 feet 7 inch 20# for intermediate.
Run 6 1/4 inch bit to T.D. Will run approx 765 feet 5 1/2 inch tubing for oil string.
Pull 8 5/8" - Pull 7"

**APPROVAL VALID
FOR 90 DAYS UNLESS
DRILLING COMMENCED,**

EXPIRES 1-6-77

IN ABOVE SPACE DESCRIBE PROPOSED PROGRAM: IF PROPOSAL IS TO DEEPEN OR PLUG BACK, GIVE DATA ON PRESENT PRODUCTIVE ZONE AND PROPOSED NEW PRODUCTIVE ZONE. GIVE SLOWOUT PREVENTER PROGRAM, IF ANY.

I hereby certify that the information above is true and complete to the best of my knowledge and belief.

Signed L. C. Wilkerson Title Agent Date October 5, 1976

(This space for State Use)

APPROVED BY W. A. Gessert TITLE SUPERVISOR, DISTRICT II DATE OCT 6 1976

CONDITIONS OF APPROVAL, IF ANY:

Cement must be circulated to
surface behind 5 1/2" casing

Notify N.M.O.C.C. in sufficient
time to witness cementing
the 5 1/2" casing

NEW MEXICO OIL CONSERVATION COMMISSION
WELL LOCATION AND ACREAGE DEDICATION PLAT

Form C-102
Supersedes C-128
Effective 1-1-65

All distances must be from the outer boundaries of the Section.

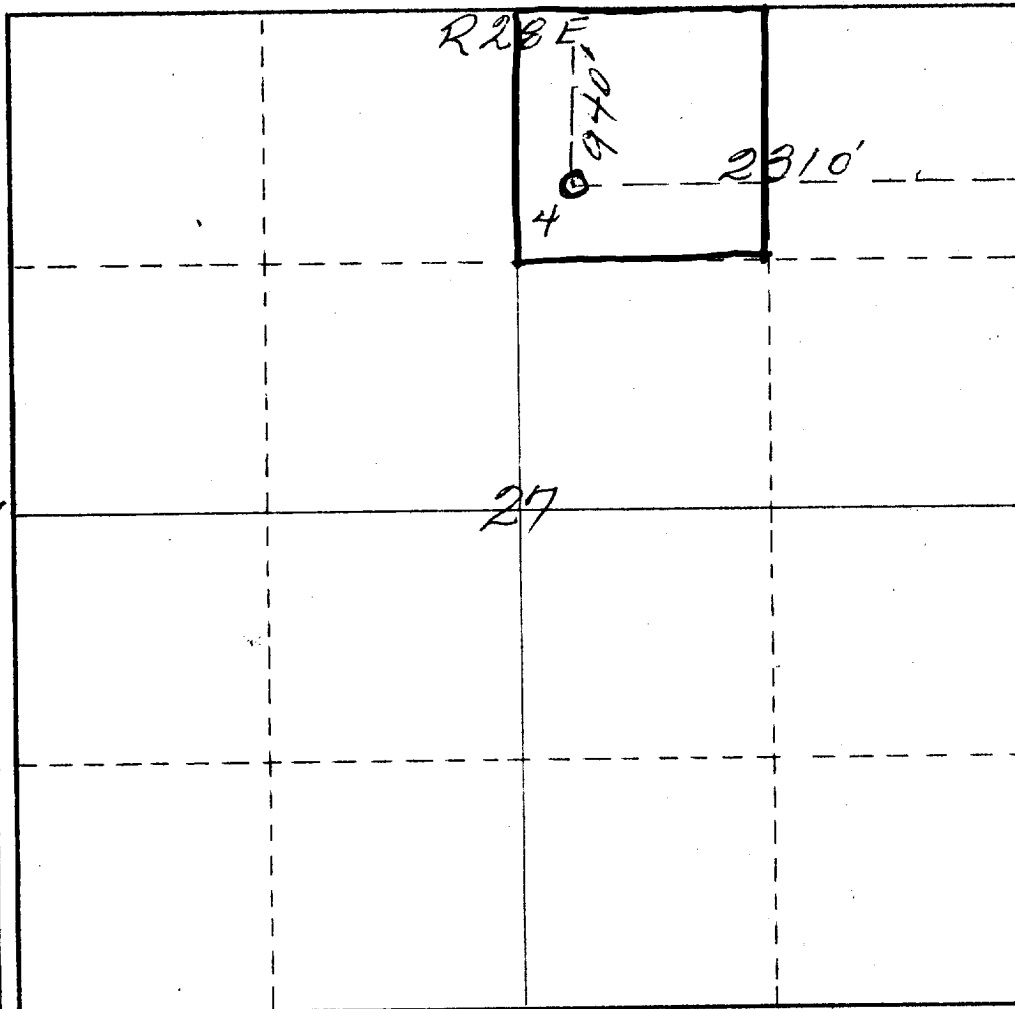
Operator <i>DAVID C. Collier & Collier-</i>		Lease <i>Gillespie State</i>		Well No. <i>4</i>
Unit Letter <i>B</i>	Section <i>27</i>	Township <i>17 South</i>	Range <i>28 East</i>	County <i>Eddy</i>
Actual Footage Location of Well: <i>940</i> feet from the <i>North</i> line and <i>2310</i> feet from the <i>East</i> line				
Ground Level Elev. <i>3597</i>	Producing Formation <i>Seven Rivers</i>	Pool <i>Ind. E. EMPIRE YATES 7-RIVERS</i>	Dedicated Acreage: <i>40</i> Acres	

1. Outline the acreage dedicated to the subject well by colored pencil or hachure marks on the plat below.
2. If more than one lease is dedicated to the well, outline each and identify the ownership thereof (both as to working interest and royalty).
3. If more than one lease of different ownership is dedicated to the well, have the interests of all owners been consolidated by communitization, unitization, force-pooling, etc?

☐ Yes ☐ No If answer is "yes," type of consolidation _____

If answer is "no," list the owners and tract descriptions which have actually been consolidated. (Use reverse side of this form if necessary.) _____

No allowable will be assigned to the well until all interests have been consolidated (by communitization, unitization, forced-pooling, or otherwise) or until a non-standard unit, eliminating such interests, has been approved by the Commission.

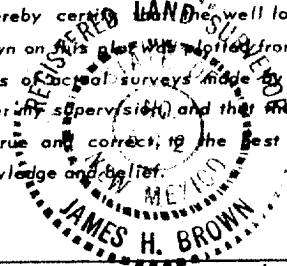


CERTIFICATION

I hereby certify that the information contained herein is true and complete to the best of my knowledge and belief.

Jim Collier
Name
Rutner
Position
Collier & Collier
Company
Oct 3rd 76
Date

I hereby certify that the well location shown on this plat was located from field notes of actual surveys made by me or under my supervision, and that the same is true and correct to the best of my knowledge and belief.



Date Surveyed
October 2nd 1976
Registered Professional Engineer
and/or Land Surveyor

James H. Brown
Certificate No. *542*

