

UNITED STATES  
DEPARTMENT OF THE INTERIOR  
GEOLOGICAL SURVEY

## APPLICATION FOR PERMIT TO DRILL, DEEPEN, OR PLUG BACK

## 1a. TYPE OF WORK

DRILL ☒DEEPEN ☐PLUG BACK ☐

## b. TYPE OF WELL

OIL  
WELL ☒GAS  
WELL ☒

OTHER

SINGLE  
ZONE ☐MULTIPLE  
ZONE ☐

## 2. NAME OF OPERATOR

McClellan Oil Corporation

## 3. ADDRESS OF OPERATOR

P.O. Box 848, Roswell, New Mexico 88261

4. LOCATION OF WELL (Report location clearly and in accordance with any State requirements.)\*  
At surface

At proposed prod. zone

990' FNL &amp; 1750' FEL DEC 14 1976

## 14. DISTANCE IN MILES AND DIRECTION FROM NEAREST TOWN OR POST OFFICE\*

O. C. C.  
ARTESIA, OFFICE

## 15. DISTANCE FROM PROPOSED\*

LOCATION TO NEAREST  
PROPERTY OR LEASE LINE, FT.  
(Also to nearest drlg. unit line, if any)

990'

## 16. NO. OF ACRES IN LEASE

960

17. NO. OF ACRES ASSIGNED  
TO THIS WELL

40

## 18. DISTANCE FROM PROPOSED LOCATION\*

TO NEAREST WELL, DRILLING, COMPLETED,  
OR APPLIED FOR, ON THIS LEASE, FT.

900' est.

## 19. PROPOSED DEPTH

2000'

## 20. ROTARY OR CABLE TOOLS

Cable tool

## 21. ELEVATIONS (Show whether DF, RT, GR, etc.)

## 22. APPROX. DATE WORK WILL START\*

Dec. 15, 1976

## 23.

## PROPOSED CASING AND CEMENTING PROGRAM

| SIZE OF HOLE | SIZE OF CASING | WEIGHT PER FOOT | SETTING DEPTH | QUANTITY OF CEMENT |
|--------------|----------------|-----------------|---------------|--------------------|
| 10-3/4"      | 8-5/8"         | 20 lb.          | 365'          | 100 sx. circ.      |
| 8"           | 7"             | 18 lb.          | 1395'         | Set                |
| 6-3/4"       | 4 1/2"         | 9 1/2 lb.       | 2000'         | 100 sx.            |

Propose to drill to 2000' to test the Premier sand of the Grayburg. If production is indicated, will set casing and attempt completion. Cortez Drilling Company of Roswell will be the contractor.

RECEIVED  
NOV 09 1976  
U. S. GEOLOGICAL SURVEY  
ARTESIA, NEW MEXICO

IN ABOVE SPACE DESCRIBE PROPOSED PROGRAM: If proposal is to deepen or plug back, give data on present productive zone and proposed new productive zone. If proposal is to drill or deepen directionally, give pertinent data on subsurface locations and measured and true vertical depths. Give blowout prevention program, if any.

## 24.

SIGNED

TITLE

Operator

DATE

11/8/76

(This space for Federal or State office use)

PERMIT NO.

APPROVALS

THIS APPROVAL IS RESCINDED IF OPERATIONS  
ARE NOT COMMENCED WITHIN 3 MONTHS.  
EXPIRES MAR 13 1977

DATE

APPROVED  
DEC 14 1976  
ACTING DISTRICT ENGINEER

\*See Instructions On Reverse Side

NEW MEXICO OIL CONSERVATION COMMISSION  
WELL LOCATION AND ACREAGE DEDICATION PLAT

Form C-102  
Supersedes C-128  
Effective 1-1-65

All distances must be from the outer boundaries of the Section

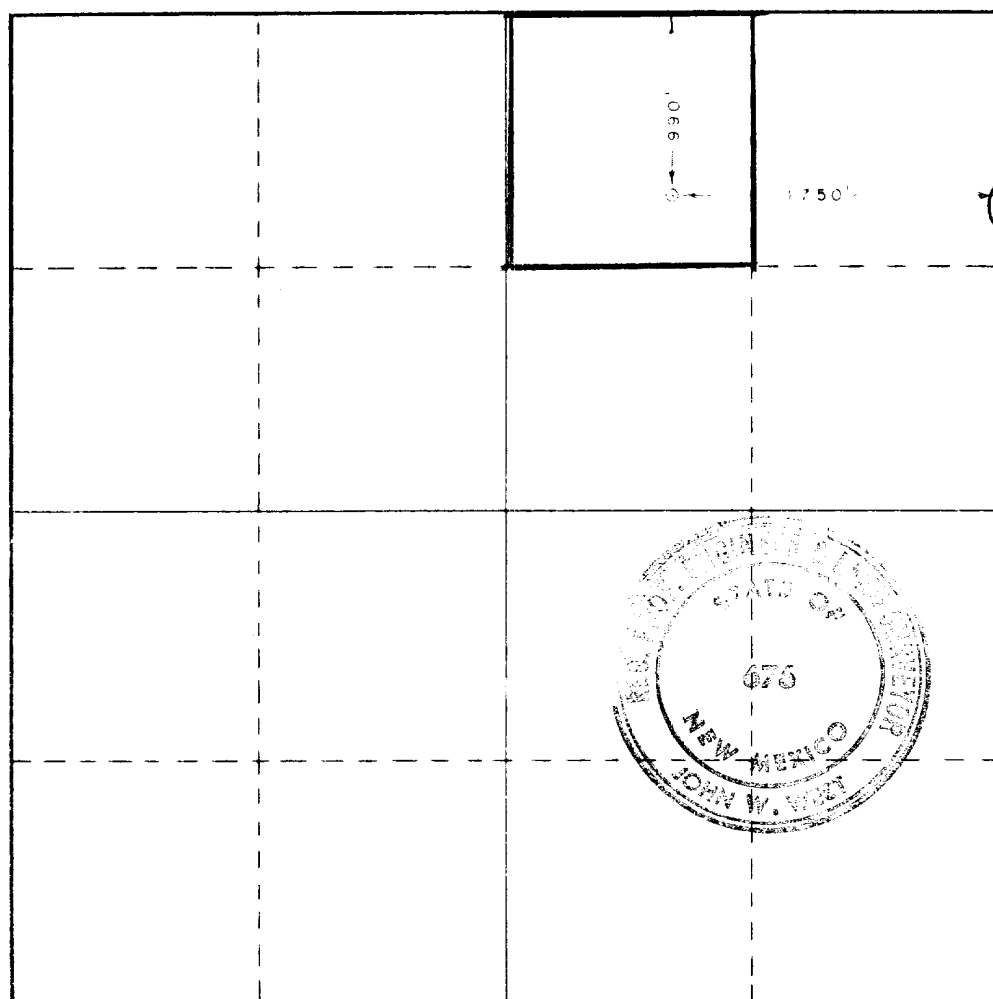
|                                                                                                                               |                                        |                               |                                       |                          |
|-------------------------------------------------------------------------------------------------------------------------------|----------------------------------------|-------------------------------|---------------------------------------|--------------------------|
| Operator<br><b>McCLELLAN OIL CORP.</b>                                                                                        |                                        | Lease<br><b>J. L. Federal</b> |                                       | Well<br><b>1</b>         |
| Unit Letter<br><b>B</b>                                                                                                       | Section<br><b>14</b>                   | Township<br><b>16 South</b>   | Range<br><b>28 East</b>               | County<br><b>ARTESIA</b> |
| Actual Footage Location of Well:<br><b>990</b> feet from the <b>north</b> line and <b>1750</b> feet from the <b>east</b> line |                                        |                               |                                       |                          |
| Ground Level Elev.<br><b>3546.0</b>                                                                                           | Producing Formation<br><b>Grayburg</b> | Pool<br><b>Undesignated</b>   | Dedicated Acreage:<br><b>40</b> Acres |                          |

1. Outline the acreage dedicated to the subject well by colored pencil or hachure marks on the plat below.
2. If more than one lease is dedicated to the well, outline each and identify the ownership thereof (both as to working interest and royalty).
3. If more than one lease of different ownership is dedicated to the well, have the interests of all owners been consolidated by communitization, unitization, force-pooling, etc?

☐ Yes ☐ No If answer is "yes," type of consolidation \_\_\_\_\_

If answer is "no," list the owners and tract descriptions which have actually been consolidated. (Use reverse side of this form if necessary.) \_\_\_\_\_

No allowable will be assigned to the well until all interests have been consolidated (by communitization, unitization, forced-pooling, or otherwise) or until a non-standard unit, eliminating such interests, has been approved by the Commission.



CERTIFICATION

I hereby certify that the information contained herein is true and complete to the best of my knowledge and belief.

Name  
**Jack L. McClellan**  
Position  
**President**  
Company  
**McClellan Oil Corporation**

Date  
**November 8, 1976**

I hereby certify that the well location shown on this plat was plotted from field notes of actual surveys made by me or under my supervision, and that the same is true and correct to the best of my knowledge and belief.

Date Surveyed  
**Nov. 5, 1976**

Registered Professional Engineer  
and/or Land Surveyor

**John W. West**  
Certificate No.

**676**

**SURFACE USE PLAN**

SURFACE USE PLAN

McClellan Oil Corporation Well No. 1 Federal "JL"  
990' FNL & 1760' FEL Sec. 14, T16S, R28E  
Eddy County, New Mexico  
Federal Lease NM 1135-A

RECEIVED  
NOV 09 1976  
U. S. GEOLOGICAL SURVEY  
ARTESIA, NEW MEXICO

1. Existing Roads

Exhibit "A" is a portion of the Eddy County New Mexico State Highway Department map indicating the location of the proposed well with respect to Artesia. Approximately 20 miles of US Highway 82 will be utilized. Approximately 6½ miles of caliche, county-maintained road will be utilized. The balance of the roads are oil field and ranch roads that are maintained at irregular intervals by operators and ranchers in the area. The route to be used is indicated in yellow with the new road to be constructed depicted in red. It is anticipated that some repair work will be necessary on the latter portion of the oil field-ranch road.

2. Planned Access Road

Exhibit "B" indicates the existing ranch-oil field roads that will be used. There is one fence to cross with a gate, the approximate location being depicted on Exhibit "B". The main road is the old "Dog Canyon" road. Portions of a lease road will be used as indicated on Exhibit "B" and approximately 2000' of new road will be constructed. The new road will be bladed and contoured, however the nature of the surface will not necessitate the use of caliche either on the access road or location pad.

3. Location of Existing Wells

Exhibit "C" indicates location of wells, ownership of leases, proposed roads, of various tracts in the area.

4. Location of Tank Battery, Production Facilities & Production Gathering & Service Lines

This information is depicted on Exhibit "D". At the present time there is no production in this area, therefore no gas or oil gathering lines are in evidence. There are no nearby tank batteries and if oil production is achieved the tank battery, location of heater treater and remaining equipment is depicted on Exhibit "C". All tanks, pump jacks and other susceptible equipment will be fenced and all safety methods employed. This will be a cable tool hole, therefore Exhibit "D" indicates dimension of the proposed location site.

5. Location and Type of Water Supply

There is situated in this general vicinity 2 large saline lakes and this water will be utilized for watering and repairing new and existing roads. However, all water used in the drilling will be trucked in as salt water is not adaptable to cable tool drilling. Water will be trucked in by commercial transport on existing roads indicated on Exhibits "A" and "B".

6. Source of Construction Materials

This will be a cable tool drilling operation and surface examination indicates that it will not be necessary to cover roads or location with caliche topping. In the event caliche topping is required, it will be gathered from the sight of the gate as depicted on Exhibit "B".

7. Handling of Waste Disposal

All material removed from the hole during the drilling operation will be placed in the pit adjoining the drilling location as depicted on Exhibit "B". As this is a cable tool operation, mud will not be utilized and therefore will result in disposal of drilling materials only. Any combustible or biochemically degradable material will be placed in the burn and trash pit.

8. Ancillary Facilities

No ancillary facilities are planned.

9. Well Site Layout

Well site layout is depicted on the accompanying Exhibit "D". The pits will not be lined as this is a cable tool operation and only cuttings will be dumped in the pit.

10. Plan for Restoration of Surface

All deadmen will be pulled, pits will be filled and levelled and all waste material disposed of as discussed in No. 7. The access road and location will be restored as near as possible to its natural state, following the directions of appropriate governmental agencies, if the well is abandoned. Otherwise, the location will be cleared and maintained in an orderly manner as future wells are drilled in the area.

11. Other Information

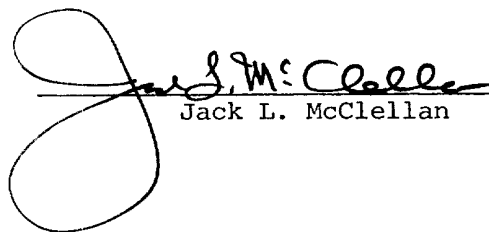
This well is in a fairly inaccessible area and is generally in a low, marsh like environment, being on the south end of several saline salt lakes and approximately 25 miles from any town or village. There is no production in the area and a topographic map (Exhibit "B") indicates that the proposed new road will take advantage of the topographic situation in the area to provide the least amount of crosscutting and eliminate erosional features.

12. Operator Representatives

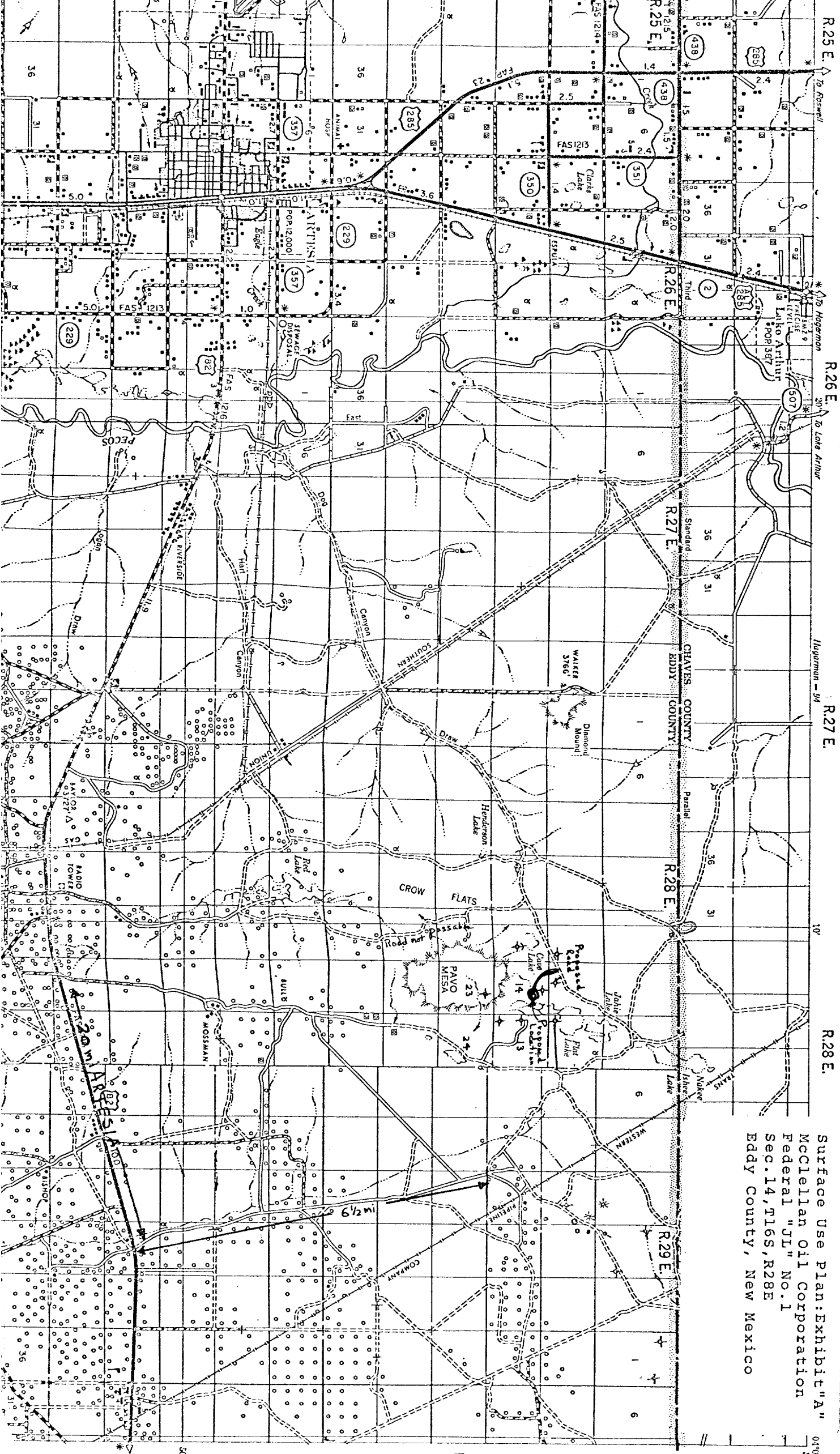
|                   |                                                                      |                     |
|-------------------|----------------------------------------------------------------------|---------------------|
| C. V. Miller      | 1106 Yates, Artesia, N. M. 88210<br>Mobile Unit 236 (Dial 746-4302)  | 746-3668            |
| Cleo Brown        | 1808 Booker, Artesia, N. M. 88210<br>Mobile Unit 235 (Dial 746-4302) | 648-2228            |
| Jack L. McClellan | 612 N. Kansas, Roswell, N. M. 88201                                  | 622-3200 or 622-407 |

12. Certification

I certify that I, or persons under my direct supervision, have inspected the proposed drill site and access route; that I am familiar with the conditions which presently exist; that the statements made in this plan are, to the best of my knowledge, true and correct; and that the work associated with the operations proposed herein will be performed by McClellan Oil Corporation and its contractors and subcontractors in conformity with this plan and the terms and conditions under which it is approved.

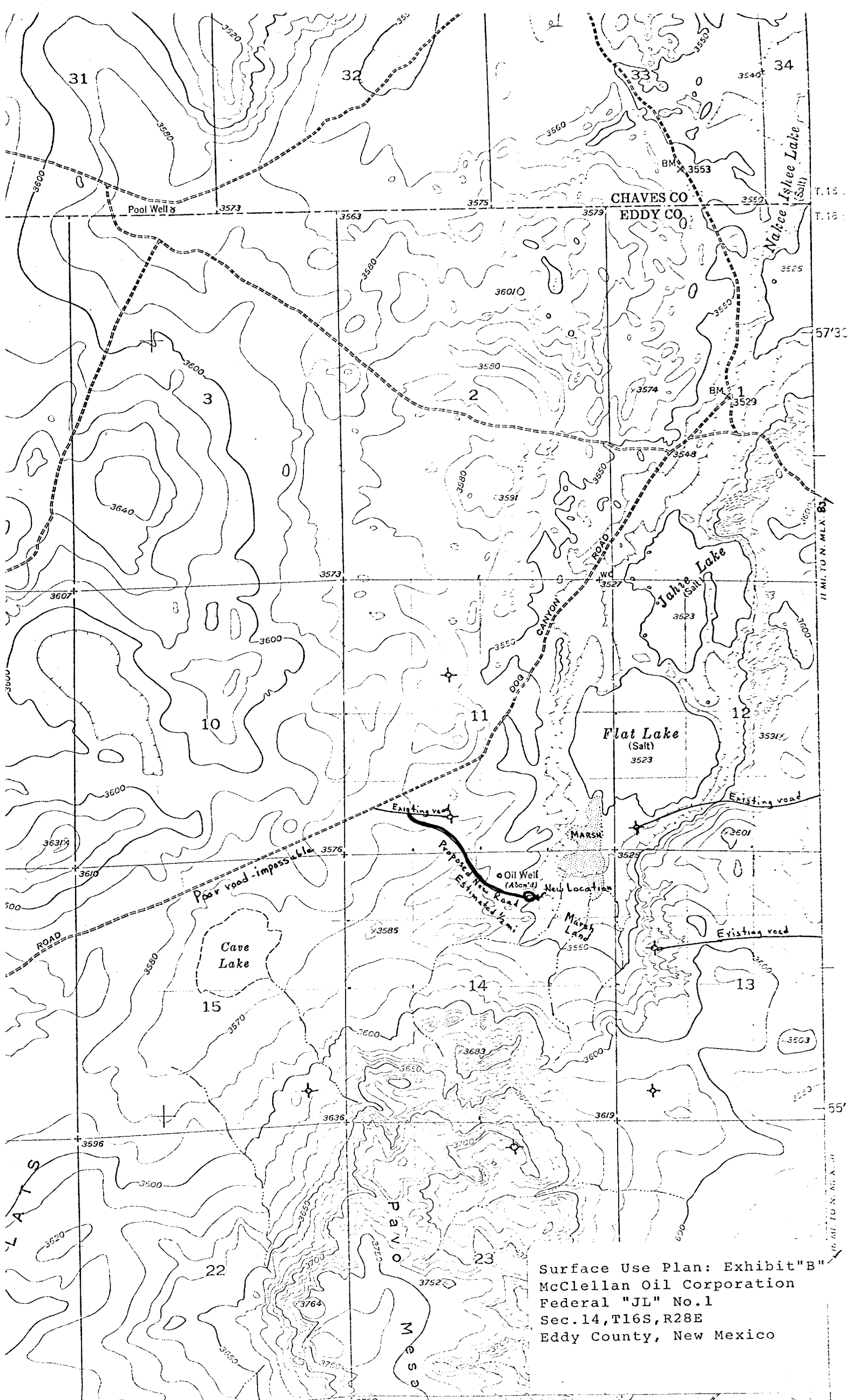
  
\_\_\_\_\_  
Jack L. McClellan

STATE HIGHWAY DEPARTMENT  
LAND PROGRAMMING DIVISION  
BUREAU OF PUBLIC ROADS

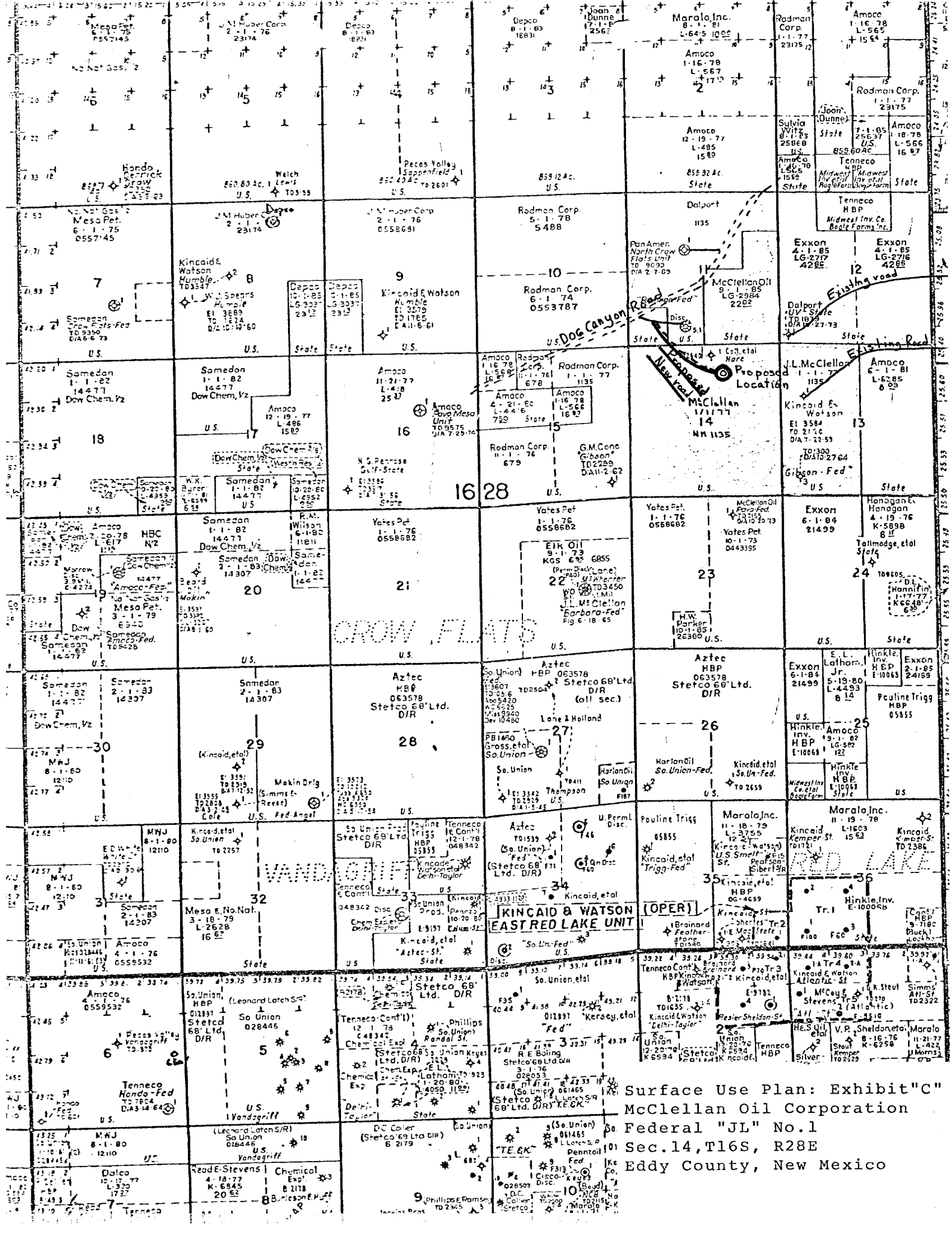


ARTESIA QUADRANGLE - 106

Surface Use Plan: Exhibit "A"  
McClellan Oil Corporation  
Federal "JL" No. 1  
Sec. 14, T16S, R28E  
Eddy County, New Mexico



Surface Use Plan: Exhibit "B"  
McClellan Oil Corporation  
Federal "JL" No. 1  
Sec. 14, T16S, R28E  
Eddy County, New Mexico

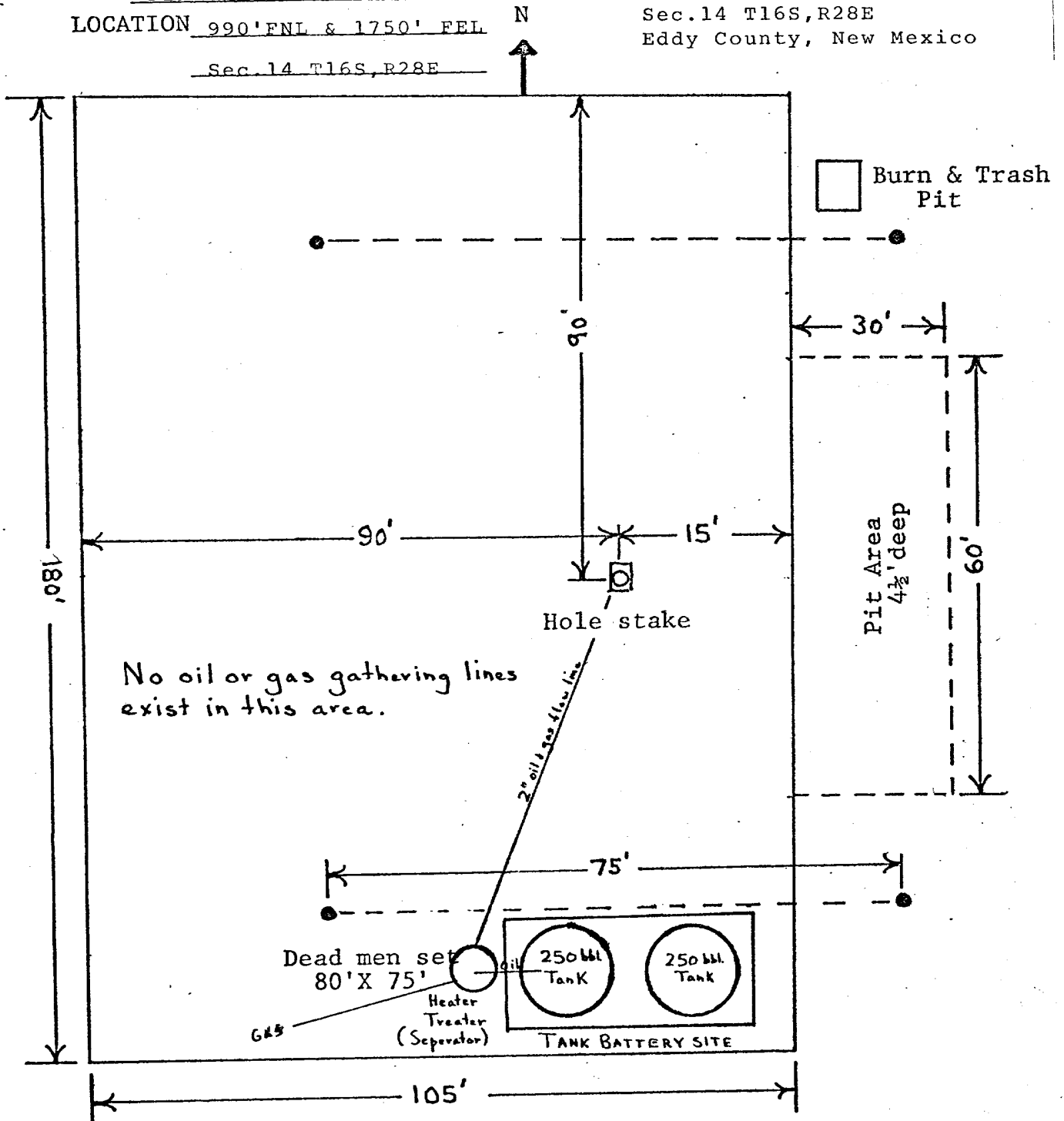


Surface Use Plan: Exhibit "C"  
McClellan Oil Corporation  
Federal "JL" No.1  
Sec.14,T16S, R28E  
Eddy County, New Mexico





Surface Use Plan: Exhibit "D"  
McClellan Oil Corporation  
Federal "JL" No.1  
Sec.14 T16S,R28E  
Eddy County, New Mexico



# CABLE TOOL LOCATION PLAT