

| | | |
|------------------------|---|---|
| NO. OF COPIES RECEIVED | | |
| DISTRIBUTION | | |
| SANTA FE | 1 | |
| FILE | 1 | ✓ |
| U.S.G.S. | 2 | |
| LAND OFFICE | 1 | |
| OPERATOR | 1 | |

NEW MEXICO OIL CONSERVATION COMMISSION

RECEIVED
Amended Permit
MAY 16 1980

30-015-22015

Form C-101
Revised 1-1-65

5A. Indicate Type of Lease

STATE ☒ FEE ☐

5. State Oil & Gas Lease No.

B-2071

APPLICATION FOR PERMIT TO DRILL, DEEPEN, OR PLUG BACK

1a. Type of Work

DRILL ☒

DEEPEN ☐

PLUG BACK ☐

b. Type of Well

OIL WELL ☒

GAS WELL ☐

OTHER

SINGLE ZONE ☒

MULTIPLE ZONE ☐

2. Name of Operator

Marbob Energy Corp. ✓

3. Address of Operator

P.O. Box 304, Artesia, N.M. 88210

4. Location of Well

UNIT LETTER O LOCATED 370 FEET FROM THE South LINE

AND 2287.6 FEET FROM THE East LINE OF SEC. 27 TWP. 17S RGE. 28E N.M.P.M.

7. Unit Agreement Name

8. Farm or Lease Name

Walker State

9. Well No.

3

10. Field and Pool, or Wildcat

East Empire Y-SR

12. County

Eddy

21. Elevations (show whether DT, RT, etc.)

3440' GR

21A. Kind & Status of Reg. Bond

Statewide active

19. Proposed Depth

1000'

19A. Formation

Seven Rivers

20. Rotary or C.T.

Rotary

21B. Drilling Contractor

Yucca Drilling Co.

22. Approx. Date Work will start

5/28/80

23.

PROPOSED CASING AND CEMENT PROGRAM

| SIZE OF HOLE | SIZE OF CASING | WEIGHT PER FOOT | SETTING DEPTH | SACKS OF CEMENT | EST. TOP |
|--------------|----------------|-----------------|---------------|-----------------|----------|
| 11" | 8 5/8" | 24# | 80' | 1½ yd rdy mix | |
| 7 7/8" | 4 1/2" | 10.50# | 1000' | 250 sax | surface |

We propose to drill to approximately 1000' to test the Seven Rivers formation. Will run 80' of 8 5/8" 24# casing, dump 1½ yds. ready mix w/¼" gravel down back side of casing. Will then drill on to 1000' and run 4½" 10.50# casing and circulate cement.

Posted
5-20-80
NL Book
102

APPROVAL VAND
FOR 90 DAYS UNLESS
DRILLING COMMENCED,

EXPIRES 8-20-80

IN ABOVE SPACE DESCRIBE PROPOSED PROGRAM: IF PROPOSAL IS TO DEEPEN OR PLUG BACK, GIVE DATA ON PRESENT PRODUCTIVE ZONE AND PROPOSED NEW PRODUCTIVE ZONE. GIVE BLOWOUT PREVENTER PROGRAM, IF ANY.

I hereby certify that the information above is true and complete to the best of my knowledge and belief.

Signed Carralga Aris Title Production Clerk Date 5/16/80

(This space for State Use)

APPROVED BY W.A. Gressett TITLE

SUPERVISOR, DISTRICT II

DATE

MAY 20 1980

CONDITIONS OF APPROVAL, IF ANY:

Cement must be circulated to surface behind 8 5/8" & 4 1/2" casing.

Run N.M. O.C.C. in sufficient time to witness cementing the 4 1/2" casing

NEW MEXICO OIL CONSERVATION COMMISSION
WELL LOCATION AND ACREAGE DEDICATION PLAT

Form C-102
Supersedes C-128
Effective 1-1-85

All distances must be from the outer boundaries of the Section.

| | | | | |
|--|----------------------|------------------------------|-------------------------|-----------------------|
| Operator MARBOB ENERGY CORPORATION | | Lease WALKER STATE | | Well No. 3 |
| Unit Letter 0 | Section 27 | Township 17 South | Range 28 East | County EDDY |

Actual Footage Location of Well:

370 feet from the **South** line and **2287.6** feet from the **East** line

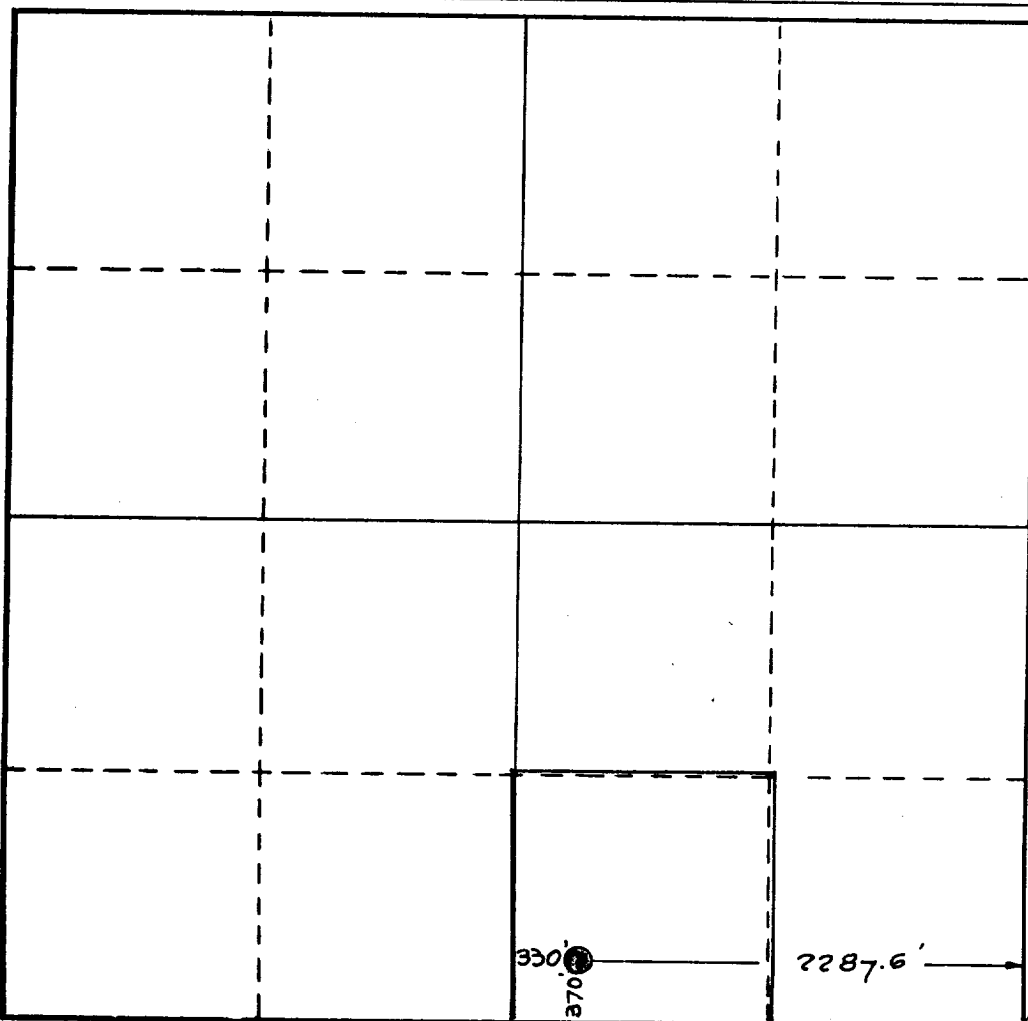
| | | | |
|-----------------------------------|------------------------------------|---------------------------------|---------------------------------------|
| Ground Level Elev. 3675 | Producing Formation Y-SR | Pool East Empire Y-SR | Dedicated Acreage: 40 Acres |
|-----------------------------------|------------------------------------|---------------------------------|---------------------------------------|

1. Outline the acreage dedicated to the subject well by colored pencil or hatchure marks on the plat below.
2. If more than one lease is dedicated to the well, outline each and identify the ownership thereof (both as to working interest and royalty).
3. If more than one lease of different ownership is dedicated to the well, have the interests of all owners been consolidated by communitization, unitization, force-pooling, etc?

☐ Yes ☐ No If answer is "yes," type of consolidation _____

If answer is "no," list the owners and tract descriptions which have actually been consolidated. (Use reverse side of this form if necessary.) _____

No allowable will be assigned to the well until all interests have been consolidated (by communitization, unitization, forced-pooling, or otherwise) or until a non-standard unit, eliminating such interests, has been approved by the Commission.



CERTIFICATION

I hereby certify that the information contained herein is true and complete to the best of my knowledge and belief.

Carolyn Orris

Name
Carolyn Orris

Position
Production Clerk

Company
Marbob Energy Corp.

Date
5/7/80

I hereby certify that the well location shown on this plat was plotted from field notes of actual surveys made by me or under my supervision, and that the same is true and correct to the best of my knowledge and belief.

Date Surveyed
July 22 & 23, 1976

Registered Professional Engineer
and/or Land Surveyor

John W. Stearn

Certificate No. **1559**

0 330 660 990 1320 1650 1980 2310 2640 2970 3300 3630 3960 4290 4620 4950 5280 5610 5940 6270 6600