

N. M. O. C. C. COPY

SUBMIT IN TRIPLICATE\*

(Other Instr reverse) on

Form approved.  
Budget Bureau No. 42-R1425.UNITED STATES  
DEPARTMENT OF THE INTERIOR  
GEOLOGICAL SURVEY

5. LEASE DESIGNATION AND SERIAL NO.

0559535

6. IF INDIAN, ALLOTTEE OR TRIBE NAME

7. UNIT AGREEMENT NAME

8. FARM OR LEASE NAME

Federal "FR"

9. WELL NO.

3

10. FIELD AND POOL, OR WILDCAT

Square Lake (Gbg.S.A.)

11. SEC., T., R., M., OR BLK.  
AND SURVEY OR AREA

Unit J, NMPM

Section 28-16S-30E

12. COUNTY OR PARISH 13. STATE

Eddy

NM

## 1a. TYPE OF WORK

DRILL ☒

RECEIVED

PLUG BACK ☐

## b. TYPE OF WELL

OIL  
WELL ☒GAS  
WELL ☐

OTHER

SINGLE  
ZONE ☒MULTIPLE  
ZONE ☐

## 2. NAME OF OPERATOR

Yates Petroleum Corporation

## 3. ADDRESS OF OPERATOR

207 South Fourth Street, Santa Fe, NM 88210

## 4. LOCATION OF WELL (Report location clearly and in accordance with any State requirements.)\*

At surface

1980' FSL &amp; 1980' FEL of Section 28-16S-30E

At proposed prod. zone

## 14. DISTANCE IN MILES AND DIRECTION FROM NEAREST TOWN OR POST OFFICE\*

5 miles north of Loco Hills, NM.

## 10. DISTANCE FROM PROPOSED\*

LOCATION TO NEAREST  
PROPERTY OR LEASE LINE, FT.  
(Also to nearest drlg. unit line, if any)

## 16. NO. OF ACRES IN LEASE

17. NO. OF ACRES ASSIGNED  
TO THIS WELL

40

## 18. DISTANCE FROM PROPOSED LOCATION\*

TO NEAREST WELL, DRILLING, COMPLETED,  
OR APPLIED FOR, ON THIS LEASE, FT.

## 19. PROPOSED DEPTH

Approx. 3700'

## 20. ROTARY OR CABLE TOOLS

Rotary

## 21. ELEVATIONS (Show whether DF, RT, GR, etc.)

376.3 GR

## 22. APPROX. DATE WORK WILL START\*

As soon as approved

## 23.

## PROPOSED CASING AND CEMENTING PROGRAM

SIZE OF HOLE	SIZE OF CASING	WEIGHT PER FOOT	SETTING DEPTH	QUANTITY OF CEMENT
12 1/2"	8-5/8"	24#	Approx. 300'	Circulate
7-7/8"	5 1/2"	14#	Approx. 3700'	250 sacks

Propose to drill a San Andres test. Surface casing will be run to top of salt section and cemented to surface. Oil string will be set through pay and cemented with 600' of cement cover, perforated and stimulated as needed for production.

MUD PROGRAM: Gel and brine mud to top of Queen, then lo-fluid loss mud to TD.

BOP PROGRAM: BOP's will be installed on 8-5/8" casing and tested daily for operational.

RECEIVED

FEB 09 1977

U.S. GEOLOGICAL SURVEY

IN ABOVE SPACE DESCRIBE PROPOSED PROGRAM: If proposal is to deepen or plug back, give data on present productive zone and proposed new productive zone. If proposal is to drill or deepen directionally, give pertinent data on subsurface locations and measured and true vertical depths. Give blowout preventer program, if any.

## 24.

SIGNED

Edgar M. Halyard

TITLE

Engineer

DATE

2-8-77

(This space for Federal or State office use)

PERMIT NO.

APPROVAL DATE

APPROVED BY

TITLE

DATE

CONDITIONS OF APPROVAL, IF ANY:

THIS APPROVAL IS RESCINDED IF OPERATIONS  
ARE NOT COMMENCED WITHIN 3 MONTHS.  
EXPIRES JUN 8 - 1977

See Instructions On Reverse Side

RECEIVED

SEP 16 1977

U.S. DEPT. OF JUSTICE

**NEW MEXICO OIL CONSERVATION COMMISSION**  
**WELL LOCATION AND ACREAGE DEDICATION PLAT**

Form C-102  
 Supersedes C-128  
 Effective 1-1-65

All distances must be from the outer boundaries of the Section.

Operator <b>YATES PETROLEUM CORPORATION</b>			Lease <b>Federal FR</b>		Well No. <b>3</b>
Unit Letter <b>J</b>	Section <b>28</b>	Township <b>16 South</b>	Range <b>30 East</b>	County <b>Eddy</b>	
Actual Footage Location of Well: <b>1980</b> feet from the <b>South</b> line and <b>1980</b> feet from the <b>East</b> line					
Ground Level Elev. <b>3763</b>	Producing Formation <b>Grayburg-San Andres</b>		Pool <b>Square Lake (Glb. S.A.)</b>		Dedicated Acreage: <b>40</b> Acres

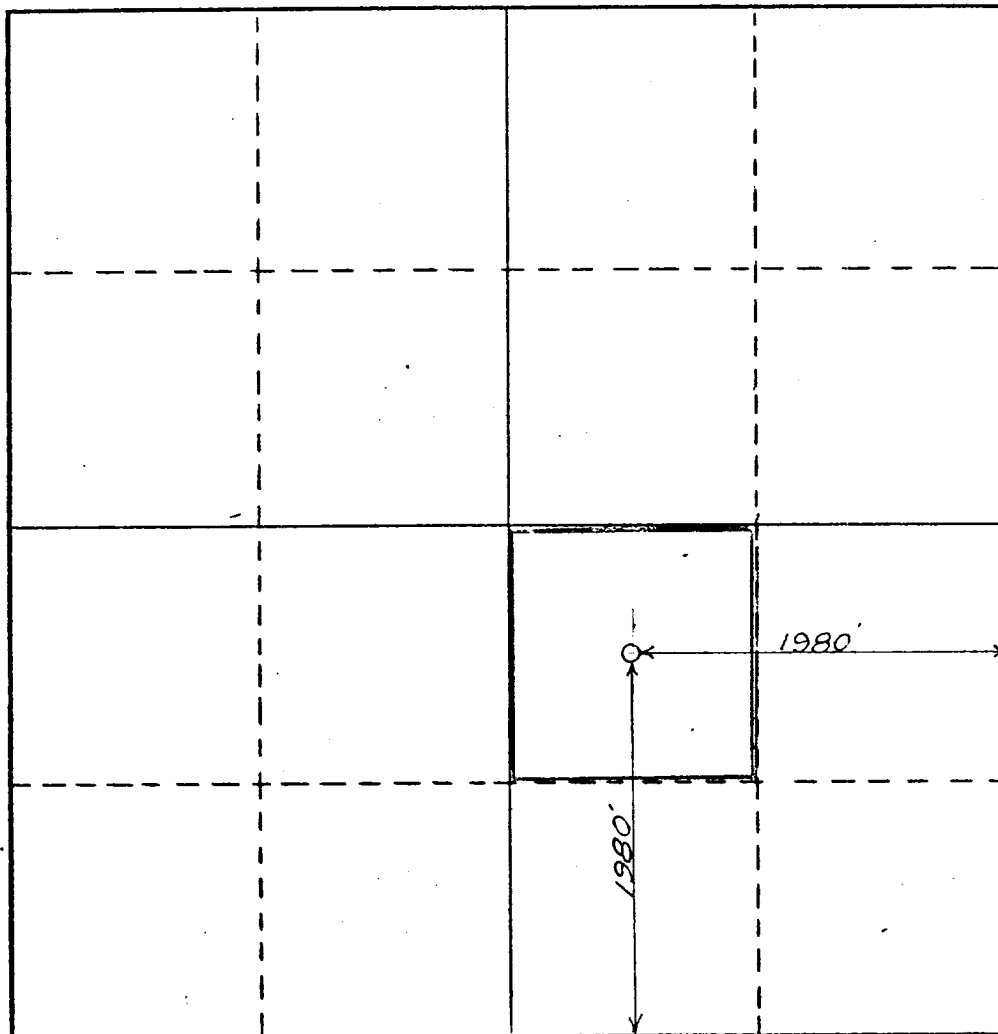
1. Outline the acreage dedicated to the subject well by colored pencil or hachure marks on the plat below.
2. If more than one lease is dedicated to the well, outline each and identify the ownership thereof (both as to working interest and royalty).
3. If more than one lease of different ownership is dedicated to the well, have the interests of all owners been consolidated by communitization, unitization, force-pooling, etc?

☐ Yes    ☐ No    If answer is "yes," type of consolidation \_\_\_\_\_

If answer is "no," list the owners and tract descriptions which have actually been consolidated. (Use reverse side of this form if necessary.) \_\_\_\_\_

No allowable will be assigned to the well until all interests have been consolidated (by communitization, unitization, forced-pooling, or otherwise) or until a non-standard unit, eliminating such interests, has been approved by the Commission.

**RECEIVED**  
**FEB 09 1977**  
 U.S. GEOLOGICAL SURVEY  
 ARTESIA, NEW MEXICO



**CERTIFICATION**

I hereby certify that the information contained herein is true and complete to the best of my knowledge and belief.

*Eddie M. Mahfood*

Name

**Eddie M. Mahfood**

Position

**Petroleum Engineer**

Company

**Yates Petroleum Corp.**

Date

**2-8-77**

I hereby certify that the well location shown on this plat was plotted from field notes of actual surveys made by me or under my supervision, and that the same is true and correct to the best of my knowledge and belief.

Date Surveyed

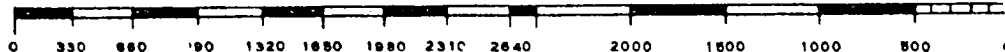
**1/29/77**

Registered Professional Engineer and/or Land Surveyor

*Heinrich*

Certificate No.

**3640**



YPC - Federal FR No. 3, 1980 FSL 1980 FEL, Sec 28-16S-30E, Eddy Co.

Other information to accompany Form 9-331-C:

1. Surface formation: Quaternary Alluvium (w/ Dockum Group).
2. Geologic Markers anticipated:

Yates	o	1288
Queen	o	2189
Grayburg	o	2543
San Andres	o	2973
3. Surface Water: Approx. 100ft, if any.  
Oil & Gas Pays: Grayburg, possible 2650-2875, 2900-2973  
San Andres, possible 3065-3100, 3400-3700
4. Casing Program: See form 9-331-C
5. Pressure Control: See form 9-331-C and Exhibit 'D'
6. Mud Program: See form 9-331-C
7. Auxiliary Equipmt: None required; sub w/ full-opening valve available.
8. Drill Stem Tests: none. Coring: possible but not scheduled.  
Mud-logging: none. Sampling: 10' samples from 1200' to TD.
9. This is a development well; pressure and temperature data from previous drilling experience; hydrogen sulfide and other toxic gases are minimal or non-existent.
10. Anticipated starting date: As soon as possible

John.

2-8-77

1. EXISTING ROADS: See Plat (Exhibit A) Go 25 miles east from Artesia on US 82 to Loco Hills, then go 5.2 miles north on blacktop to cattleguard, then SE and East on caliche road for 3/4 mile. Location on north side of existing road. Caliche road is maintained by county, by blading and watering.
2. PLANNED ACCESS ROADS: See Plat (Exhibit A & B) Location is just off existing road; minimal disturbance for access to location.
3. LOCATION OF EXISTING WELLS: See Plat (Exhibit A & B) This well will be a development well in the Square Lake (Qn. Gbg. S.A.) Field. There are producing oil wells to the south and east of this location.
4. LOCATION OF TANK BATTERIES, PRODUCTION FACILITIES, AND PRODUCTION, GATHERING AND SERVICE LINES: See Plat (Exhibit B) Existing tank battery on east side of access road at SE corner of Federal "FR" #1 pad. Flowline from No. 3 well will be 2" steel on the surface, to east end of pad, east alongside existing road, north behind tank battery and tied into separator with wells No. 1 and No. 2.
5. LOCATION AND TYPE OF WATER SUPPLY: Fresh water and brine will be trucked to location for drilling and completion procedures from available commercial sources on existing roads and access road.
6. SOURCE OF CONSTRUCTION MATERIAL: Caliche will be from open caliche pit approximately 3/4 mile east of this location, located in NESW of Section 27 - 16S - 30E.
7. METHODS FOR HANDLING WASTE DISPOSAL: Well cuttings will be jetted into reserve pit; mud, sacks, paper, & garbage will be burned; garbage will be accumulated in trash barrels and disposed of by burning or buried three (3) feet in burn pit; there will be a sump for a portable commode.
8. ANCILLARY FACILITIES: None.
9. WELL SITE LAYOUT: (rig, tanks, pits, racks, etc.) See Sketch (Exhibit C)  
(a) thin caliche pad (140' X 100') with rig V-door to east.  
(b) Steel pits for mixing mud; earthen reserve pit (60' X 35') unlined, on north side of pad.  
(c) Pad & reserve pit is flagged.
10. PLANS FOR RESTORATION OF SURFACE: (a) If a producer, reserve pit will be fenced until dry, then filled & leveled; location will be cleaned and excess material hauled away from location. (b) Upon abandonment, location will be cleaned and leveled, well capped and marked as is statutory.
11. OTHER INFORMATION: (a) Terrain is gently rolling with shifting sand dunes; (b) Vegetative cover is sparse with some prairie grass, shrub oak, mesquite and yucca; (c) Wildlife includes reptiles, rodents, coyotes, and doves. (d) Land use: some grazing and hunting. (e) Surface owner: believed to be BLM.
12. LESSEE'S OR OPERATOR'S REPRESENTATIVE: (a) Eddie Mahfood, Office Phone: 746-3558, Home Phone: 746-4415; (b) Leon Bergstrom, Office Phone: 746-3558, Home Phone: 748-1072.
13. CERTIFICATION:

RECEIVED

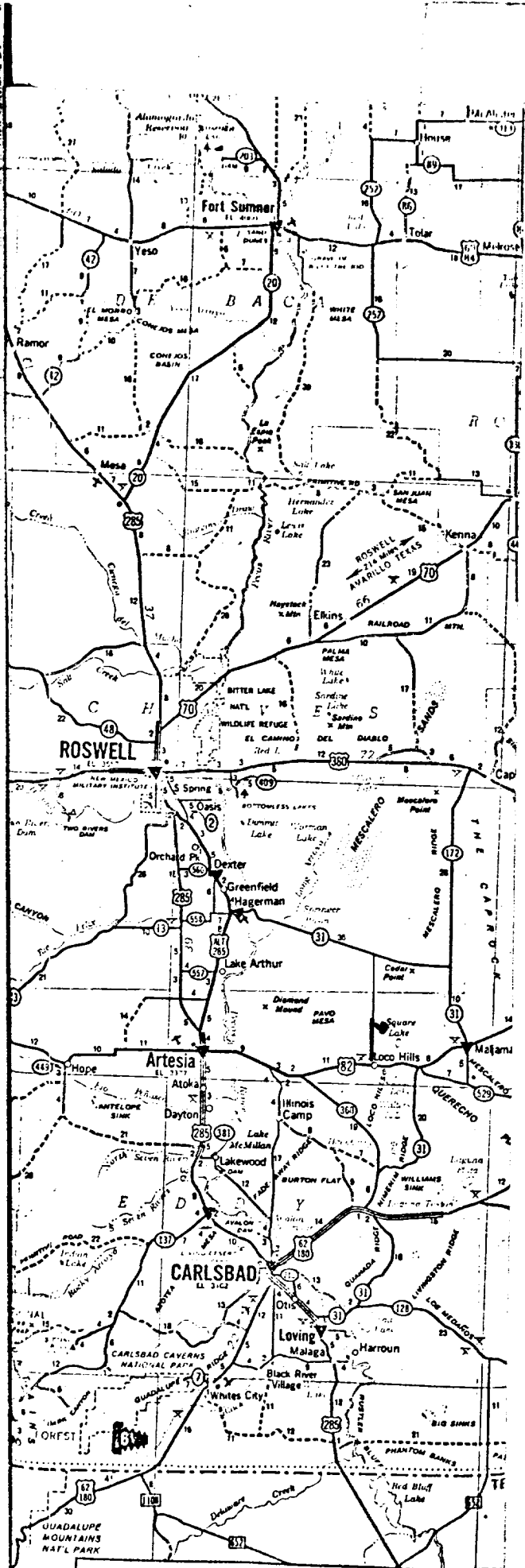
FEB 09 1977

U.S. GEOLOGICAL SURVEY  
ARTESIA, NEW MEXICO

I hereby certify that I, or persons under my direct supervision, have inspected the proposed drillsite and access route; that I am familiar with the conditions which presently exist; that the statements made in this plan are, to the best of my knowledge, true and correct; and, that the work associated with the operations proposed herein will be performed by Yates Petroleum Corporation and its contractors and subcontractors in conformity with this plan and the terms and conditions under which it is approved.

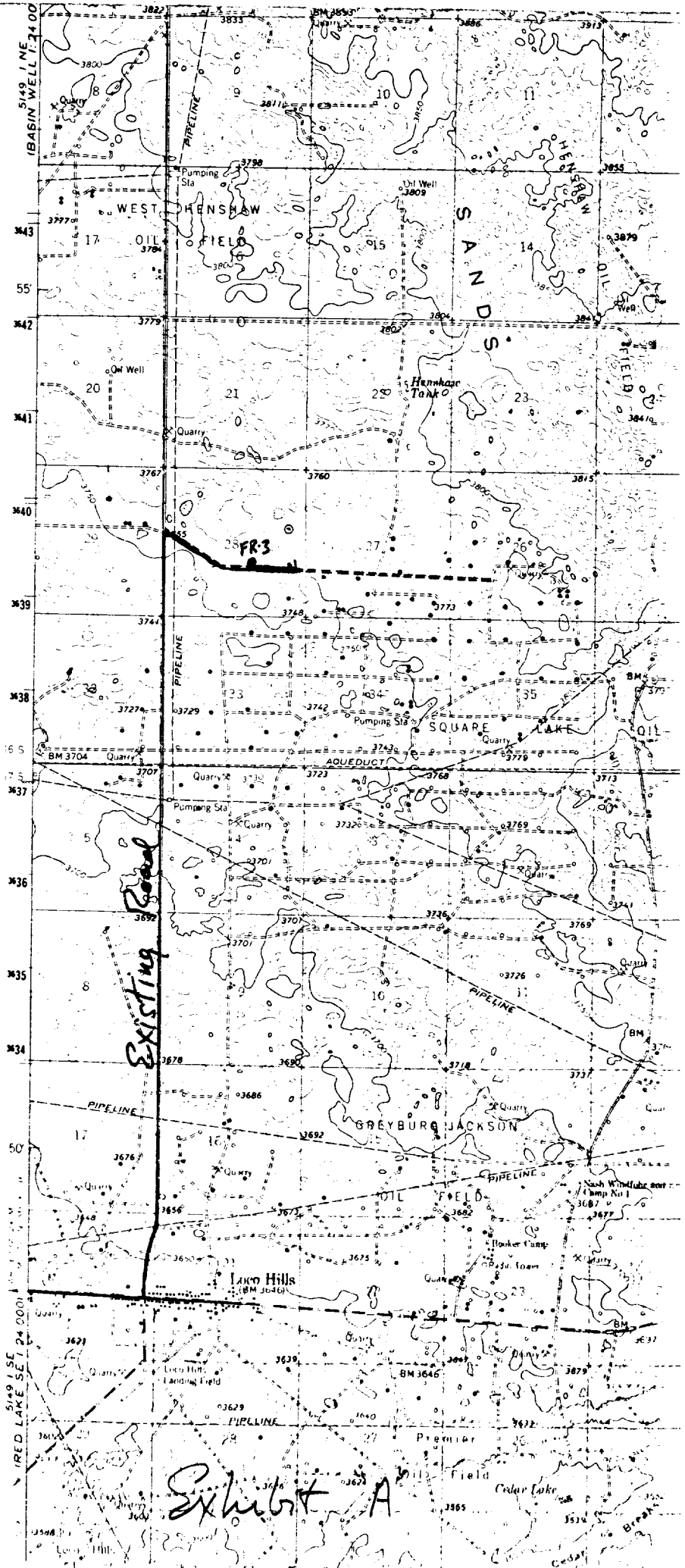
2-8-77

*Eddie M. Mahfood, Engr.*



**LOCATIONS WHERE CONOCO PRODUCTS ARE SOLD**

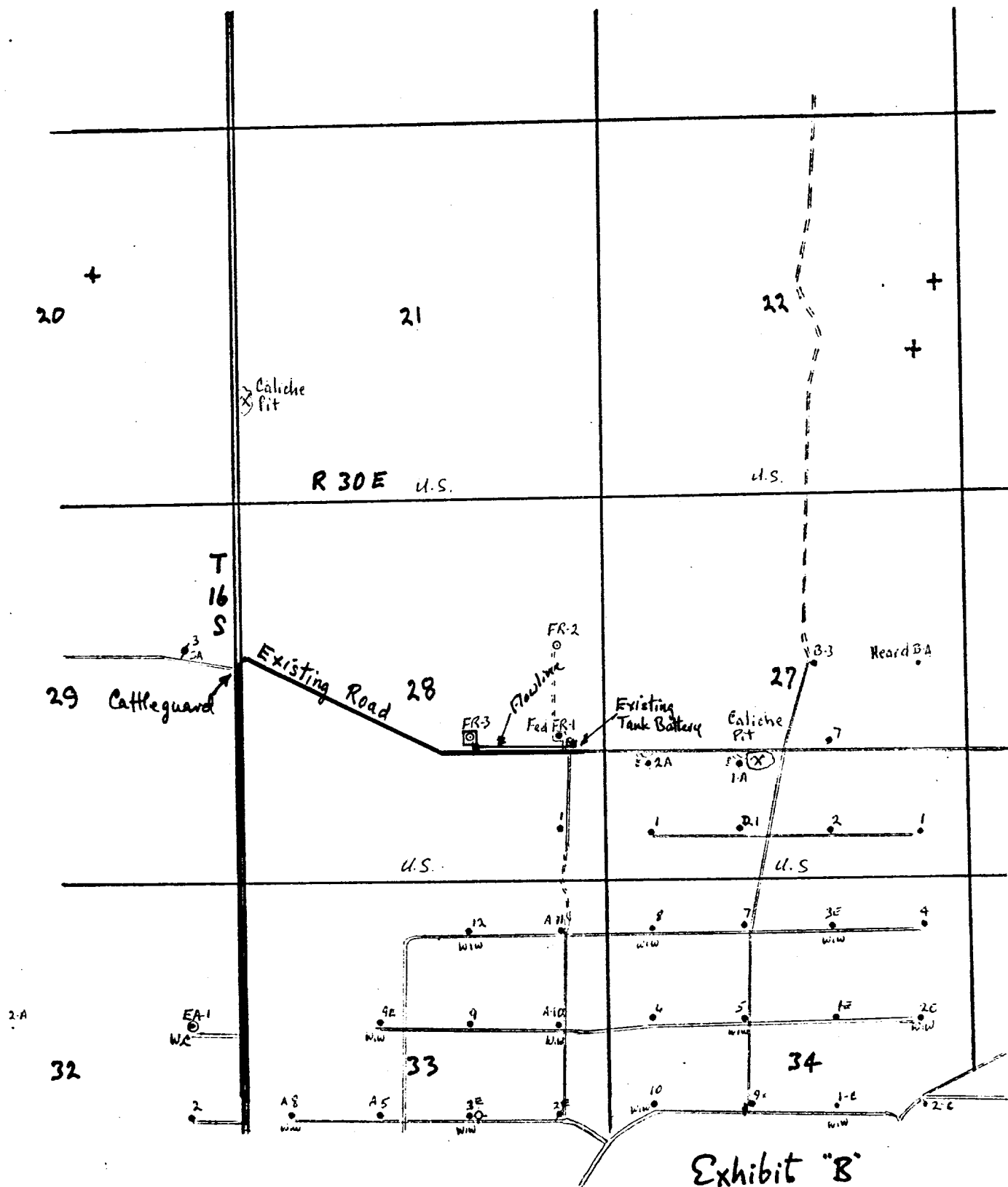
▲ Locations on Interstate Highways, toll roads or major limited access highways  
 ▼ Other CONOCO station locations

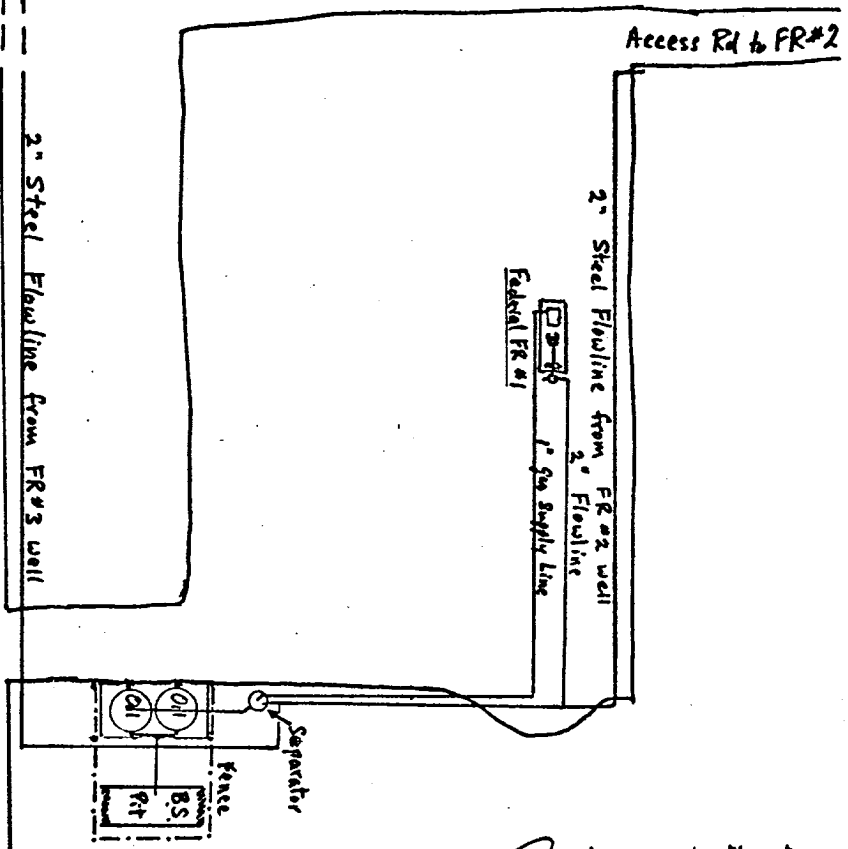
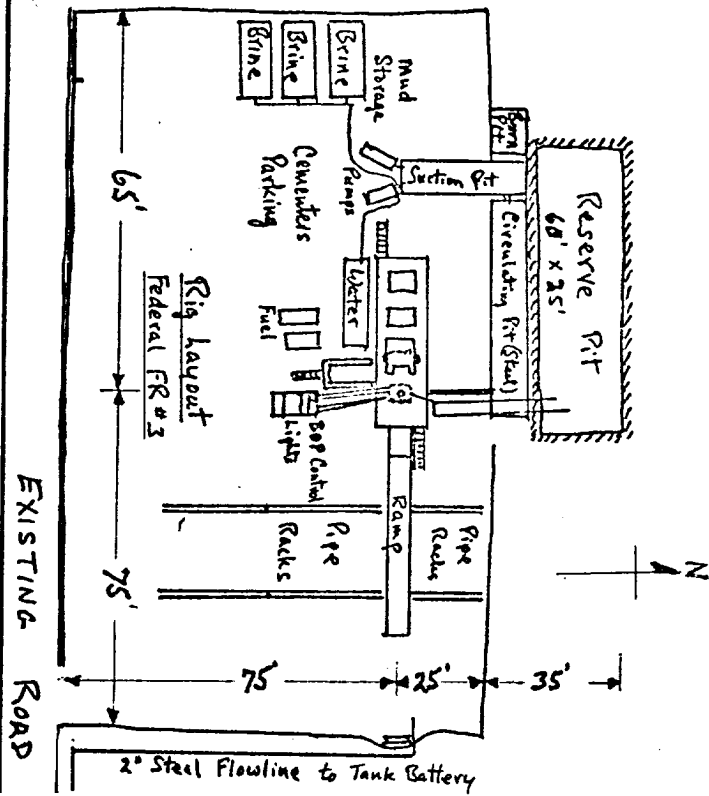


*Existing Road*

*Exhibit A*

YPC- Federal "FR" No. 3, 1980 FSL 1980 FEL, Sec 28-16s-3DE, Eddy Co.

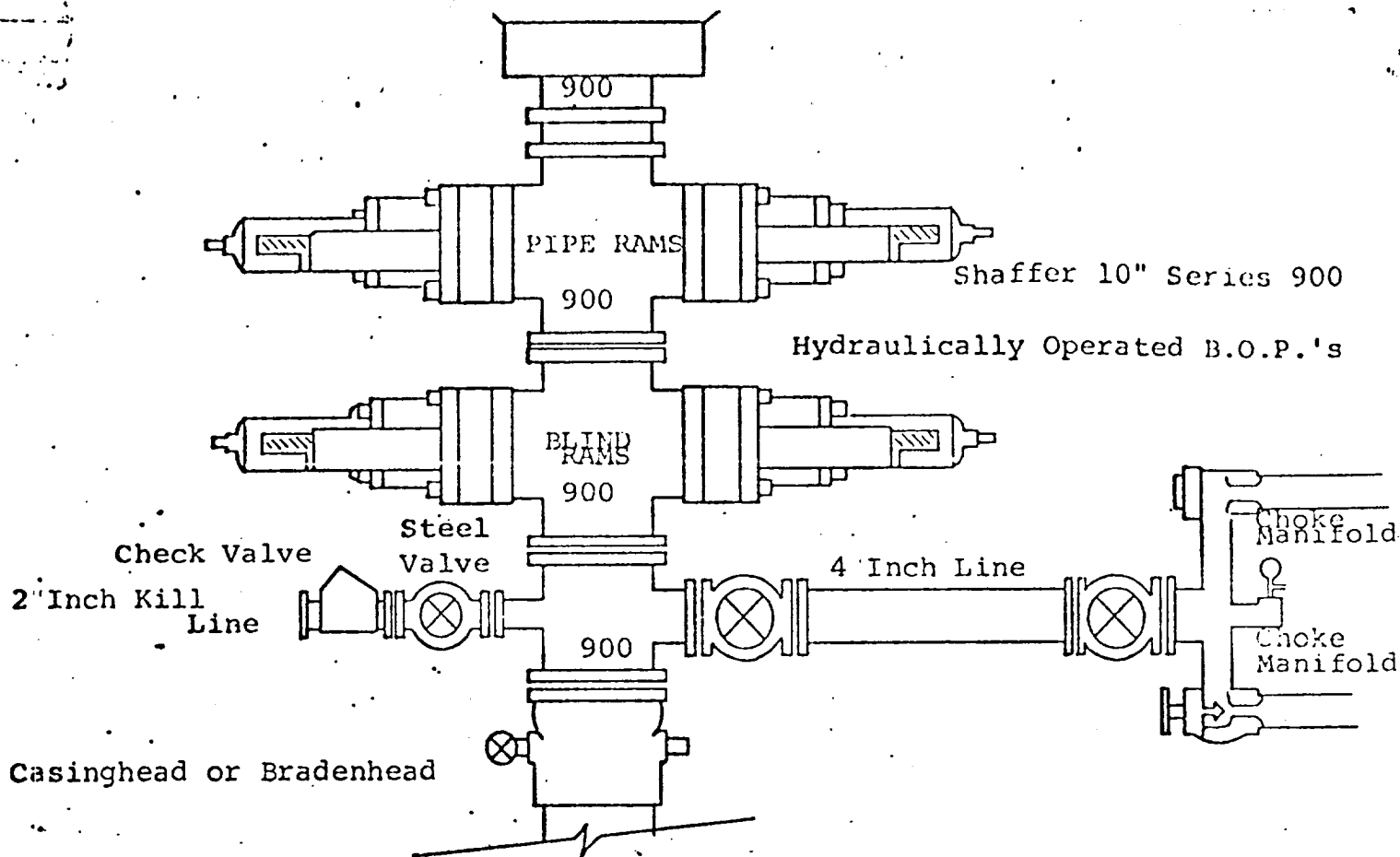




(Existing) Tank Battery layout

Exhibit 'c'





THE FOLLOWING CONSTITUTE MINIMUM BLOWOUT PREVENTER REQUIREMENTS

1. All preventers to be hydraulically operated with secondary manual controls installed prior to drilling out from under casing.
2. Choke outlet to be a minimum of 4" diameter.
3. Kill line to be of all steel construction of 2" minimum diameter.
4. All connections from operating manifolds to preventers to be all steel, hole or tube a minimum of one inch in diameter.
5. The available closing pressure shall be at least 15% in excess of that required with sufficient volume to operate the B.O.P.'s.
6. All connections to and from preventer to have a pressure rating equivalent to that of the B.O.P.'s.
7. Inside blowout preventer to be available on rig floor.
8. Operating controls located a safe distance from the rig floor.
9. Hole must be kept filled on trips below intermediate casing. Operator not responsible for blowouts resulting from not keeping hole full.
10. D. P. float must be installed and used below zone of first gas intrusion.

Exhibit "D"