

NEW MEXICO OIL CONSERVATION COMMISSION
WELL LOCATION AND ACREAGE DEDICATION PLAT

Form C-102
 Supersedes C-128
 Effective 1-1-65

All distances must be from the outer boundaries of the Section

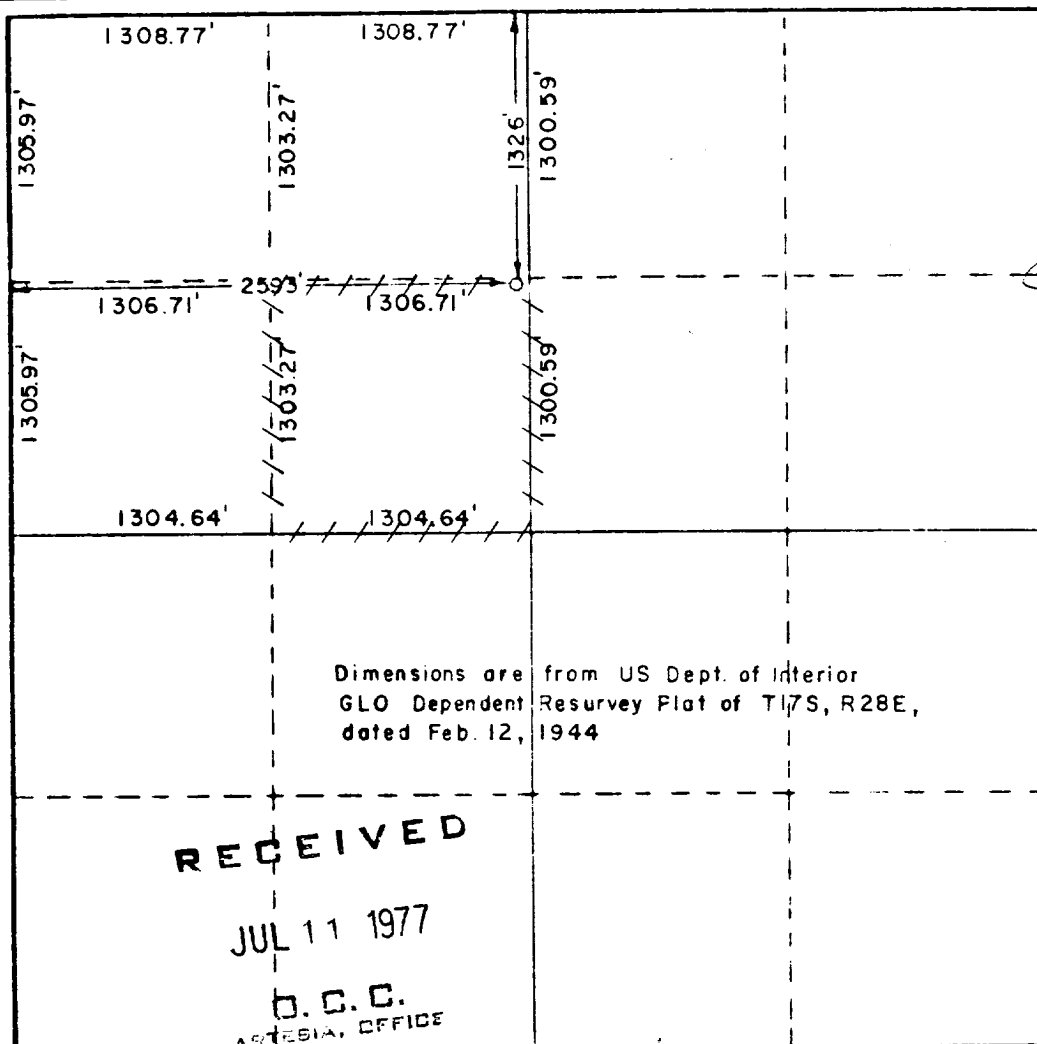
Operator Atlantic Richfield Co.			Lease Empire Abo Unit F		Well No. 341
Unit Letter F	Section 34	Township 17 South	Range 28 East	County Eddy	
Actual Footage Location of Well: 1326 feet from the North line and 2593 feet from the West line					
Ground Level Elev. 3673.0	Producing Formation Abo		Pool Empire		Dedicated Acreage: 40 Acres

1. Outline the acreage dedicated to the subject well by colored pencil or hachure marks on the plat below.
2. If more than one lease is dedicated to the well, outline each and identify the ownership thereof (both as to working interest and royalty).
3. If more than one lease of different ownership is dedicated to the well, have the interests of all owners been consolidated by communitization, unitization, force-pooling, etc?

☒ Yes ☐ No If answer is "yes," type of consolidation Unitization

If answer is "no," list the owners and tract descriptions which have actually been consolidated. (Use reverse side of this form if necessary.) _____

No allowable will be assigned to the well until all interests have been consolidated (by communitization, unitization, forced-pooling, or otherwise) or until a non-standard unit, eliminating such interests, has been approved by the Commission.



CERTIFICATION

I hereby certify that the information contained herein is true and complete to the best of my knowledge and belief.

Name _____
 Position _____
 Dist. Dir. Supt. _____

Company
Atlantic Richfield Company

Date
7/7/77

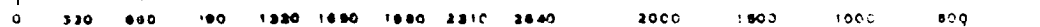
I hereby certify that the well location shown on this plat was plotted from field notes of actual surveys made by me or under my supervision, and that the same is true and correct to the best of my knowledge and belief.

Date Surveyed
June 23, 1977

Registered Professional Engineer and/or Land Surveyor

John W. West

Certificate No. **676**



NE MEXICO OIL CONSERVATION COMMISSION
WELL LOCATION AND ACREAGE DEDICATION PLAT

Form C-122
Supersedes C-128
Effective 1-1-65

All distances must be from the outer boundaries of the Section

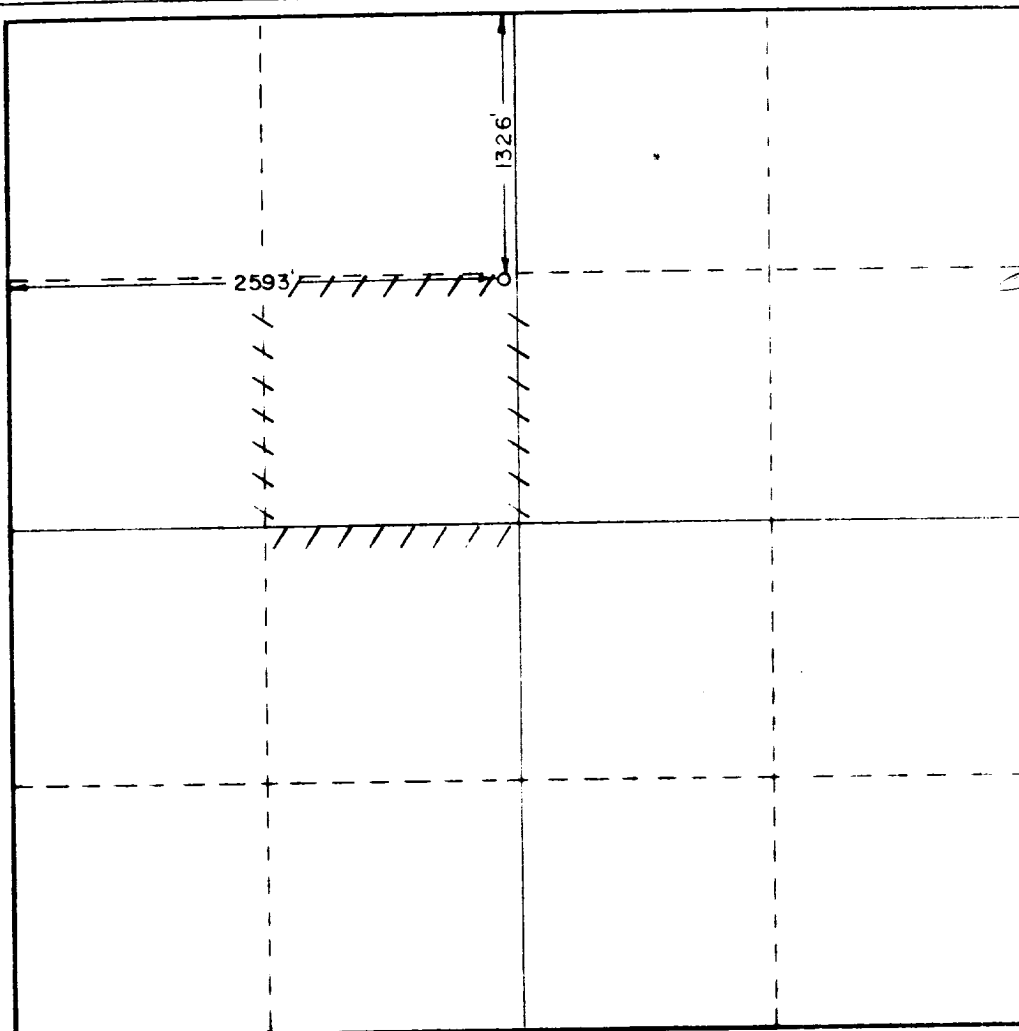
Operator Atlantic Richfield Co.		Lease Empire Abo Unit F		Well No. 341
Lot Letter F	Section 34	Township 17 South	Range 28 East	County Eddy
Actual Well Location of Well:				
1326 feet from the North line and		2593 feet from the West line		
Ground Level Elev. 3673.0	Producing Formation Abo Reef	Pool Empire	Estimated Acreage 40 Acres	

1. Outline the acreage dedicated to the subject well by colored pencil or hatchure marks on the plat below
2. If more than one lease is dedicated to the well, outline each and identify the ownership thereof (both as to working interest and royalty).
3. If more than one lease of different ownership is dedicated to the well, have the interests of all owners been consolidated by communitization, unitization, force-pooling, etc?

☒ Yes ☐ No If answer is "yes," type of consolidation Unitization

If answer is "no," list the owners and tract descriptions which have actually been consolidated (Use reverse side of this form if necessary.) _____

No allowable will be assigned to the well until all interests have been consolidated (by communitization, unitization, forced-pooling, or otherwise) or until a non-standard unit, eliminating such interests, has been approved by the Commission.



CERTIFICATION

I hereby certify that the information contained herein is true and complete to the best of my knowledge and belief.

District Engineer

Dist. Engr. Supt.

Atlantic Richfield Company

7/6/77

I hereby certify that the well location shown on this plat was plotted from field notes of actual surveys made by me or under my supervision and that the same is true and correct to the best of my knowledge and belief.

Date Surveyed

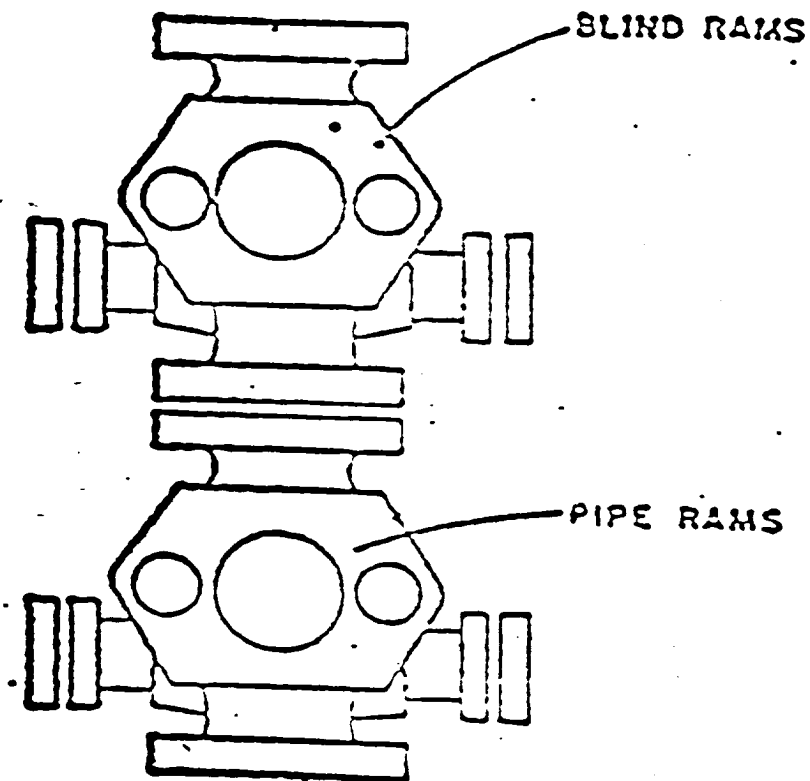
June 23, 1977

Registered Professional Engineer and/or Land Surveyor

Certificate No.

676

0 330 660 990 1320 1650 1980 2310 2640 2000 1800 1600 1400 1200 1000 800 600 400 200 0



ATLANTIC RICHFIELD COMPANY
Blow Out Preventer Program

Lease Name Empire Abo Unit "F"

Well No. 341

1326' FNL & 2593' FWL

Location Sec 34-17S-28E, Eddy County, N.M.

BOP to be tested before installed on well and will be maintained in good working condition during drilling. All wellhead fittings to be of sufficient pressure to operate in a safe manner.